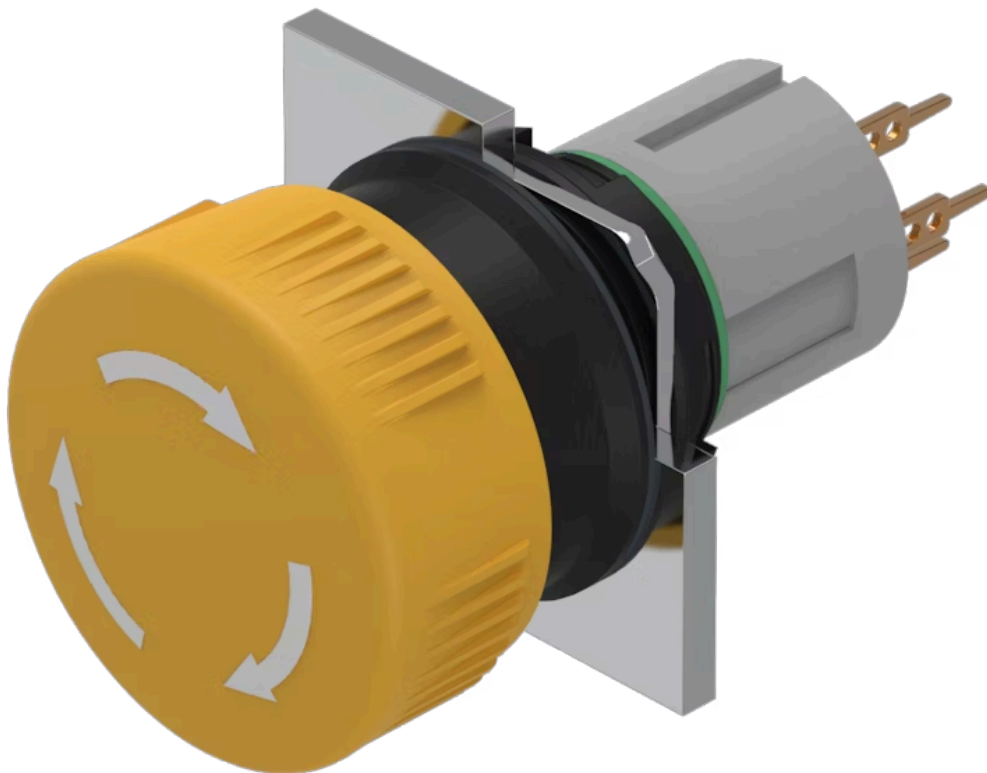


# Actuator

51-  
252.0264

Distribution by  
DigiKey

**DigiKey**



<https://digikey.eao.com/p/51-252.0264>

Your product:

---



## 51-252.0264 Actuator

### FRONT

**Front dimension:** Ø 24,5 mm

**Front form:** round

### MOUNTING

**Design:** raised

**Mounting type:** Panel mounting

### OPERATING-/INDICATION PART

**Lens optics:** opaque

**Lens shape:** mushroom-head

**Lens colour:** Yellow

**Lens material:** Plastic

**Lens illumination:** non illuminative

### ELECTRICAL CHARACTERISTICS

**Contacts:** 2 NC

**Switching voltage and switching current:** 100 mA at 42 VAC/VDC

### MECHANICAL CHARACTERISTIC

**Switching system:** This low-level switching element was designed for switching low powers in electronic circuits. The mechanism assures reliable switching of loads ranging from a few  $\mu\text{A}/\mu\text{V}$  up to 100 mA/ 42 VAC/DC.  
Single-break momentary contact, as normally open or normally closed with 4 independent points of contact. 2 momentary contacts per switching element; combination of normally open and normally closed is possible.

Special features are the long life, extremely short rebound time and stable contact resistance.

<b>Mechanical lifetime:</b>	1 Mio. cycles of operation
<b>Operating Travel:</b>	3 mm
<b>Terminal:</b>	Universal terminal, 2 x 0.5 mm
<b>Switching system:</b>	Low-level element
<b>Weight:</b>	0.011 kg
<b>Switching action:</b>	Maintained
<b>Operating force:</b>	18 ... 21 N (depending on the switching element)
<b>Contact material:</b>	Gold
<b>Tightening torque:</b>	Fixing nut max. 0.5 Nm

#### AMBIENT CONDITION

<b>Operating temperature:</b>	- 25 °C ... + 55 °C
<b>IP front protection:</b>	IP65, according to DIN EN 60529
<b>Storage temperature:</b>	- 40 °C ... + 85 °C

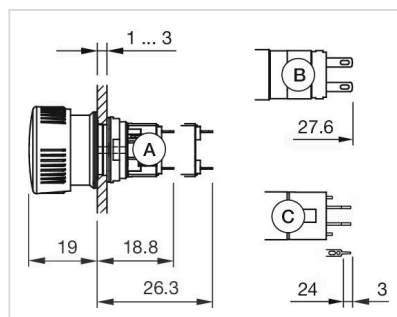
#### CERTIFICATE

<b>REACH:</b>	REACH compliant
<b>RoHS:</b>	RoHS compliant

#### OTHER

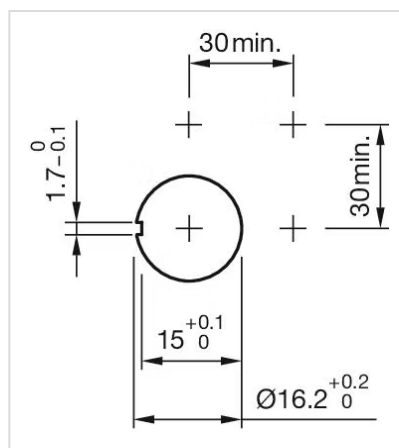
<b>Housing colour:</b>	Black
<b>Short Description:</b>	Actuator, Ø 24,5 mm, mushroom-head, non illuminative, Yellow, Plastic, opaque, round, 2 NC, Maintained, Universal terminal, 2 x 0.5 mm, IP65, according to DIN EN 60529
<b>Hints:</b>	Marking arrows

#### Dimension drawings:



A = Solder terminal  
B = Plug-in terminal 2.8 mm x 0.5 mm  
C = Universal terminal 2.0 mm x 0.5 mm

**Mounting cut-outs:**



**Wiring diagrams:**

