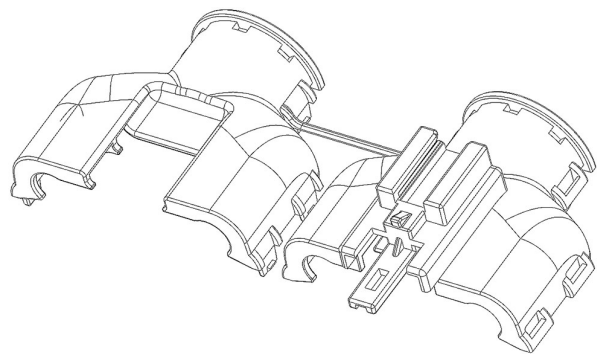




**Part Number :** [349521611](#)  
**Product Description :** MX150 Backshell for Hybrid Female Sealed Connector Assembly, 16 Circuit, with Rib  
**Series Number :** 34952  
**Status :** Active  
**Product Category :** Connector Housings  
**Engineering Number :** 22 NG 34952



Documents & Resources

**Drawings**  
[349521611\\_sd.pdf](#)  
[PK-31302-118-001.pdf](#)

**3D Models and Design Files**  
[349521611\\_stp.zip](#)

**Specifications**  
[AS-34951-001-001.pdf](#)

Product Environment Compliance

Compliance

GADSL/IMDS	Compliant
China RoHS	Not Relevant
EU ELV	Compliant per 2000/53/EC
Low-Halogen Status	Not Relevant
REACH SVHC	Not Contained per D(2024)4144-DC (27 June 2024)
EU RoHS	Compliant per EU 2015/863

Multiple Part Product Compliance Statements  
- Eu RoHS  
- REACH SVHC  
- Low-Halogen

## Multiple Part Industry Compliance Documents

- IPC 1752A Class C
- IPC 1752A Class D
- Molex Product Compliance Declaration
- IEC-62474
- chemSHERPA (xml)

## EU RoHS Certificate of Compliance

---

### Part Details

#### General

Status	Active
Category	Connector Housings
Series	34952
Description	MX150 Backshell for Hybrid Female Sealed Connector Assembly, 16 Circuit, with Rib
Application	Power, Wire-to-Wire, Automotive
Comments	With Rib
Product Name	MX150
UPC	191128245623

#### Physical

Circuits (maximum)	16
Color - Resin	Black
Gender	N/A
Glow-Wire Capable	No
Lock to Mating Part	Yes
Material - Resin	Nylon
Net Weight	11.200/g
Number of Rows	0
Packaging Type	Bag
Panel Mount	No
Pitch - Mating Interface	N/A
Polarized to Mating Part	Yes
Stackable	No
Temperature Range - Operating	-40° to +125°C

---

Use with Part(s)

Description	Part Number
MX150 Hybrid Mat-Sealed Female Connector Assemblies	<u>34985</u>

---