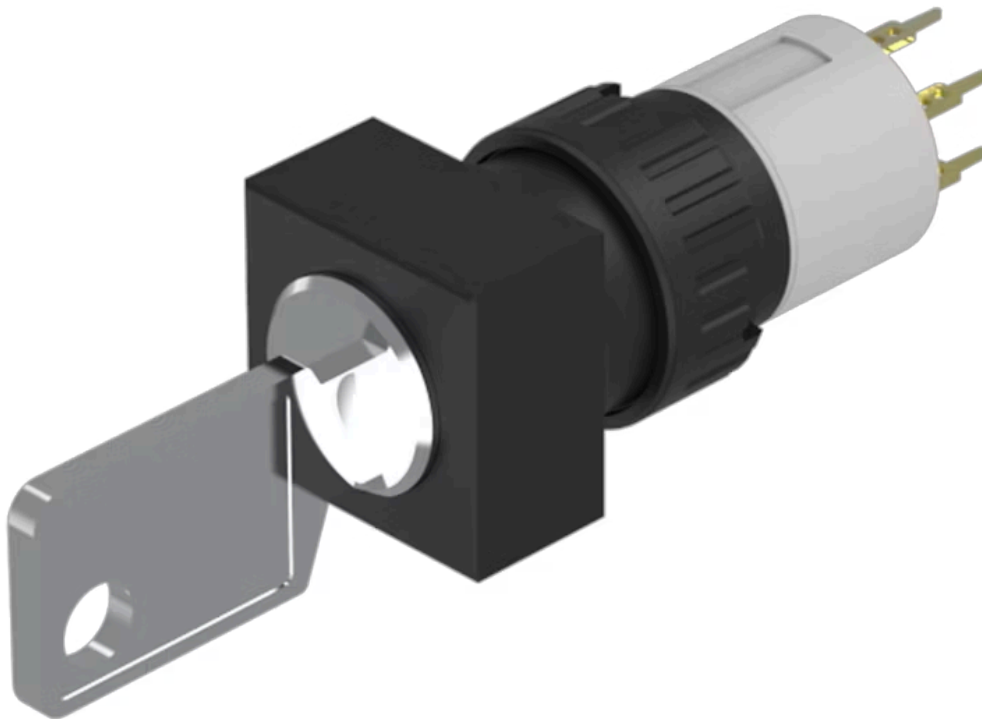


Actuator

51-
445.036DF

Distribution by
DigiKey

DigiKey

<https://digikey.eao.com/p/51-445.036DF>

Your product:



51-445.036DF Actuator

FRONT

Front dimension: 18 mm x 18 mm

MOUNTING

Design: flush

Mounting cut-out: 21 mm x 21 mm

ELECTRICAL CHARACTERISTICS

Electric strength: 2500 VAC, 50 Hz, 1 min. between all terminals and earth, according to IEC 61058-1, part 15

Electrostatic discharge (ESD): ≤ 15 kV

Contacts: 1 NC / 1 NO

Switching voltage and switching current: 100 mA at 42 VAC/VDC

MECHANICAL CHARACTERISTIC

Contact material: Gold

Switching positions: 2 positions

Switching system: This low-level switching element was designed for switching low powers in electronic circuits. The mechanism assures reliable switching of loads ranging from a few $\mu\text{A}/\mu\text{V}$ up to 100 mA/ 42 VAC/DC. Single-break momentary contact, as normally open or normally closed with 4 independent points of contact. 2 momentary contacts per switching element; combination of normally open and normally closed is possible. Special features are the long life, extremely short rebound time and stable contact resistance.

Tightening torque: Fixing nut max. 0.5 Nm

Mechanical lifetime: 50 000 cycles of operation

Weight:

0.016 kg

Terminal: Universal terminal, 2 x 0.5 mm

Switching action: Rest (a) - Maintained

Operating force: 4 N ... 6 N

Switching system: Low-level element

Switching angle: 90° right

AMBIENT CONDITION

IP front protection: IP65, according to DIN EN 60529

Storage temperature: - 40 °C ... + 85 °C

Shock resistance: 15 g for 11 ms, as per DIN / EN 60512-4-3, DIN / EN 60068-2-27 (Single impacts, semi-sinusoidal)

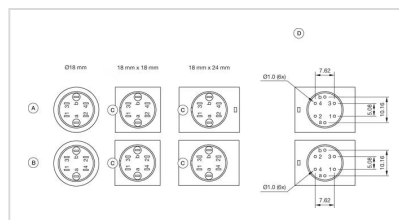
OTHER

Housing colour: Black

Short Description: Actuator, 21 mm x 21 mm, 18 mm x 18 mm, 1 NC / 1 NO, Rest (a) - Maintained, Universal terminal, 2 x 0.5 mm, IP65, according to DIN EN 60529

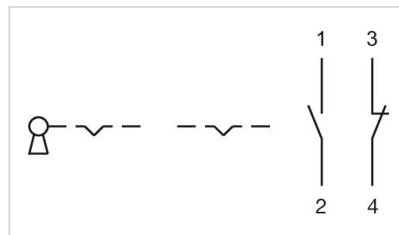
Hints: Standard lock: DOM 311

Component layouts:

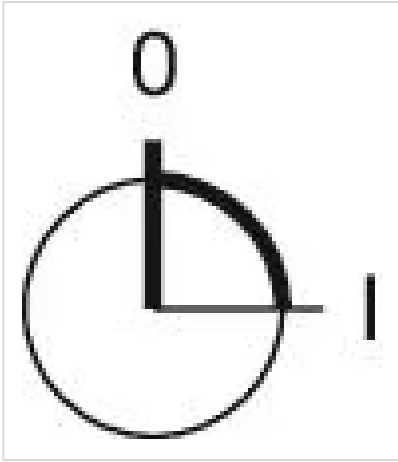


A = Universal terminal (rear side)
B = Plug-in terminal (rear side)
C = Anti twist device
D = Drilling plan

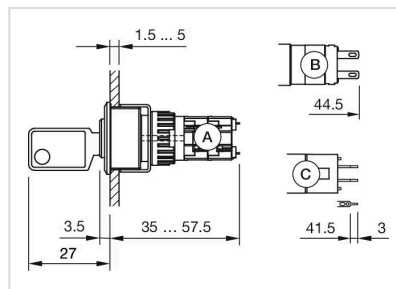
Wiring diagrams:



Switching positions:



Dimension drawings:



A = Solder terminal

B = Solder terminal 2.8 mm x 0.5 mm

C = Universal terminal 2.0 mm x 0.5 mm

Mounting cut-outs:

