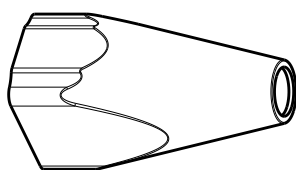
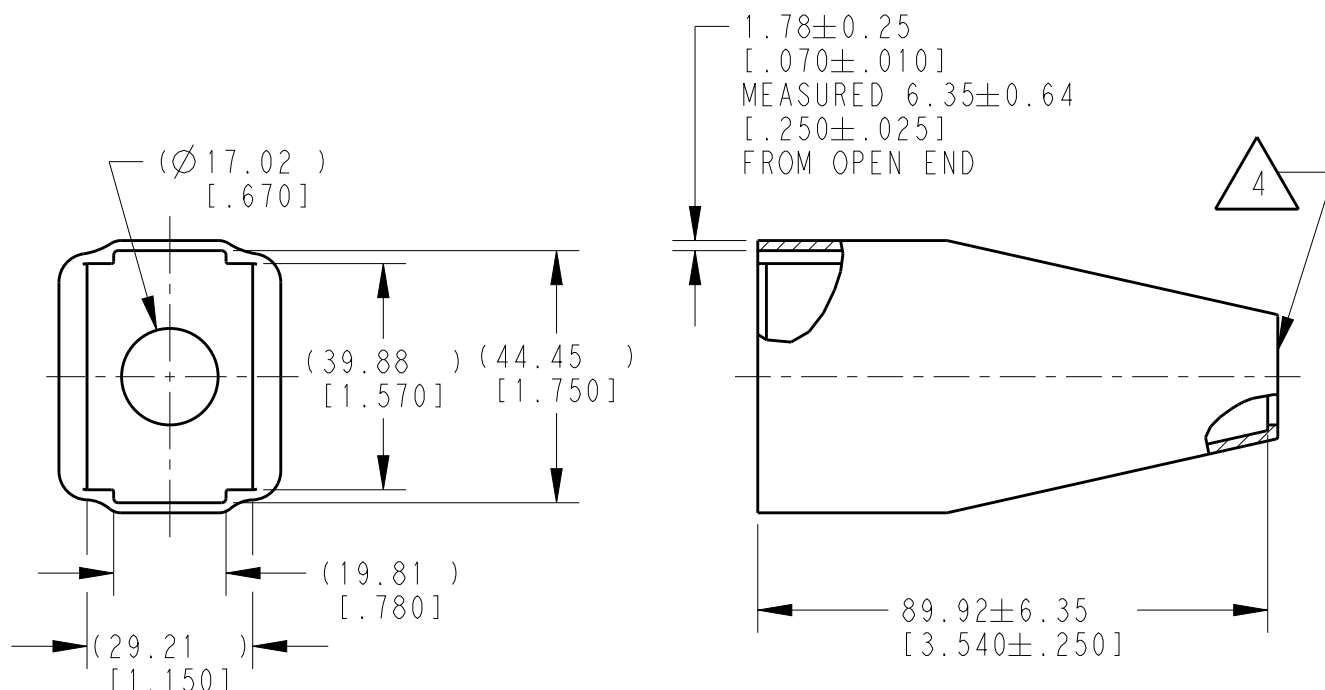


| LOC | DIST | REVISIONS | | | | | |
|-----|------|-----------|-----|-------------------------------|-----------|-----|------|
| | | P | LTR | DESCRIPTION | DATE | DWN | APVD |
| | | | A | NEW RELEASE PER ECO-14-010239 | 05AUG2014 | DM | DM |
| | | | A1 | REVISED PER PCN E-19-014644 | 31OCT2019 | JA | IG |
| | | | | | | | |
| | | | | | | | |



SCALE 23:60



4 SMALL MATERIAL EXTENSION IS ACCEPTABLE ON THIS END ALL AROUND.

3. THIS ACCESSORY PART IS PROVIDED WITHOUT TYPICAL TRANSPORTATION INDUSTRY PROCESS CONTROLS. NO VALIDATION TESTING HAS BEEN PERFORMED. CUSTOMER IS RESPONSIBLE FOR DETERMINING PRODUCT PERFORMANCE AND SUITABILITY FOR APPLICATION.

2. TEMPERATURE RATING: -29°C TO $+100^{\circ}\text{C}$ [-20°F TO $+212^{\circ}\text{F}$].

1. THIS PART IS USED ON DTV06-18SX PLUGS WITH ANY MODIFICATION.


NOTES:

TE INTERNAL PN

DEUTSCH PN

DTV18S-BT-BK

DTV18S-BT-BK

| | | | | | | | |
|--|--|------------------|-----------|--|-----------|----------------|---------------|
| DIMENSIONS: | | DWN | 07JUL2014 | MATERIAL | PCV | FINISH | BLACK |
| mm [INCHES] | | D.MEYER | |  TE Connectivity | | | |
| TOLERANCES UNLESS OTHERWISE SPECIFIED: | | CHK | 07JUL2014 | | | | |
| | | B.MILLIGAN | 07JUL2014 | | | | |
| 0 PLC \pm 1 PLC \pm 2 PLC \pm 3 PLC ± 0.64 [1.025] 4 PLC \pm ANGLES $\pm 0^{\circ} 30' 0''$ | | APVD | 07JUL2014 | NAME BOOT, PLUG, 18 PIN DTV SERIES | | | |
| | | D.MEYER | | | | | |
| PRODUCT SPEC | | APPLICATION SPEC | | SIZE | CAGE CODE | DRAWING NO | RESTRICTED TO |
| WEIGHT | | 21.12g | | A4 | 4AFU8 | C-DTV18S-BT-BK | - |
| CUSTOMER DRAWING | | | | SCALE | 3:4 | SHEET | 1 OF 1 |
| | | | | | | REV | A1 |