

PRODUCT NUMBER

20020325-XXXXXXLF

20020325-

PITCH

G: 5.00 mm

H: 5.08 mm



POLES

04: 2x2 POLES  
06: 2x3 POLES  
(OTHER POSITIONS  
ON REQUEST ONLY)

LF : DENOTED RoHS COMPATIBLE

1 : STANDARD PRODUCT  
W/ BOX PACKING

SCREW CODE

CODE	SCREW TYPE	AVAILABILITY
A	-/+ 	ON REQUEST ONLY
B	- 	STANDARD

HOUSING CODE

CODE	COLOR	AVAILABILITY
1	GREEN(RAL 6018/T)	STANDARD
2	BLACK	ON REQUEST ONLY
3	GREY(RAL 7004/P)	ON REQUEST ONLY
4	BLUE(RAL 5015/A)	ON REQUEST ONLY

## NOTES:

## 1. MATERIALS

1-1 HOUSING: THERMALPLASTIC RESIN, UL 94V-0 RATED,

1-2 SCREW: STEEL, ZINC PLATED.

1-3 CLAMP: COPPER ALLOY, NICKEL PLATED.


1-4 TERMINAL: COPPER ALLOY, TIN PLATED.



## 2. PRODUCT SPECIFICATION REFER TO FCI GS-12-625.

## 3. PRODUCT PACKING SPECIFICATION REFER TO FCI GS-14-1394.

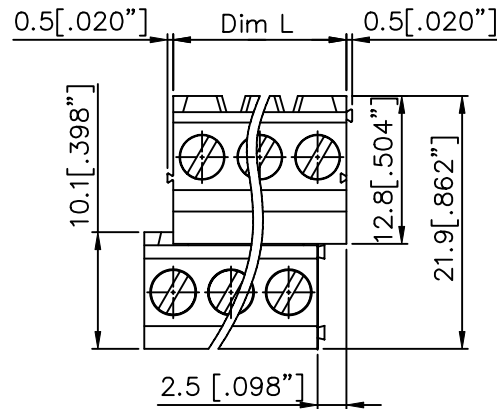
4. FCI, SAFETY CERTIFICATE LOGO AND SERIES NAME TO BE SHOWN  
ON PRODUCT SURFACE.5. THE PRODUCTS WHERE THE PART NUMBER END IN "LF" MEET THE  
EUROPEAN UNION DIRECTIVE AND OTHER COUNTRY REGULATIONS AS  
DESCRIBED IN GS-22-008.

## 6. RECOMMENDED SOLDERING PROCESS BY WAVE SOLDER.

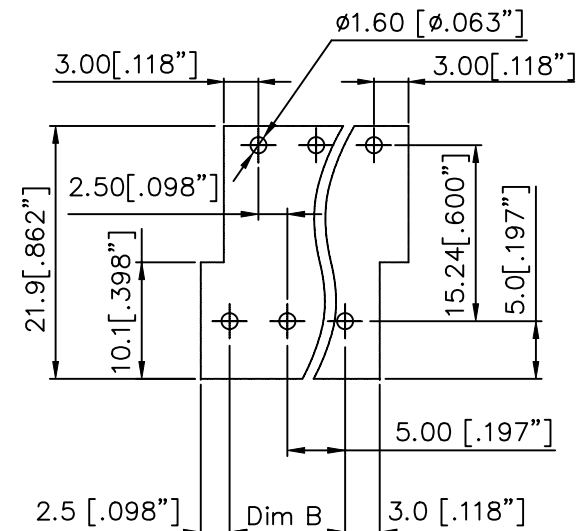
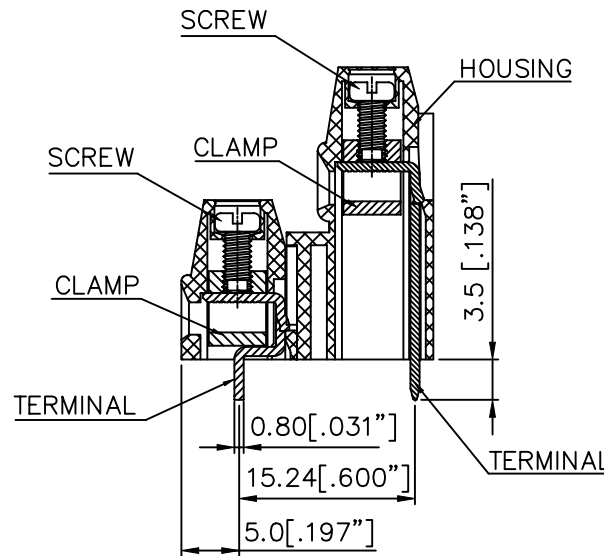
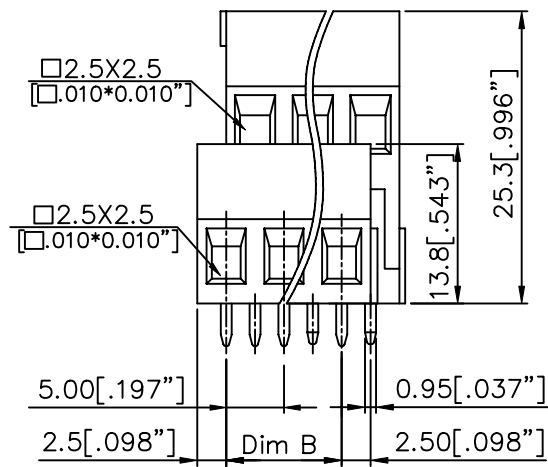
PROPERTY TABLE				
FCI SERIES NAME		24-500	24-508	
PITCH (mm)		5.00	5.08	
VOLTAGE RATING (VAC)		300	300	
CURRENT RATING (A)		20	20	
APPLICABLE WIRE RANGE (AWG)	1-WIRE	12~22	12~22	
	2-WIRE	18	18	
WIRE CROSS SECTION (mm <sup>2</sup> )	SOLID	1-WIRE	2.5	2.5
		2-WIRE	1.0	1.0
	STRANDED	1-WIRE	1.5	1.5
		2-WIRE	0.75	0.75
OPENING CONTACT HOUSING(mm <sup>2</sup> )		2.5x2.5	2.5x2.5	
WIRE STRIP LENGTH(mm)		6~7	6~7	
TORQUE +/-10% (N-m/Lb-in)		0.4/3.5	0.4/3.5	
SCREW		M2.5x0.4	M2.5x0.4	
WITHSTANDING VOLTAGE (kV)		1.6	1.6	
OPERATING TEMP. (°C)		-40~+115	-40~+115	
SOLDERING TEMP. (°C)		250±10	250±10	
		(5 sec.)	(5 sec.)	
POLES AVAILABLE		04~06	04~06	
SAFETY CERTIFICATE				

mat'l. code				surface	tolerance	projection	product family
				ASME Y14.5	ASME Y14.5		TERMINAL BLOCK
ltr	ecn no	dr	date	tolerances unless otherwise specified			title
A	T10-0138	WL	083110	angles	X.±0.5	MM	TERMINAL BLOCK
B	T10-0141	WL	090710	holes	X.X±0.3	[INCH]	FIXED SIGNAL PLUG, OFFSET LEFT, 2-LEVEL
C	T10-0165	WL	101210	dr	X*±1"	scale	dwg no
				engr	JASON HSU 081710		sheet 1 of 3
				chr	GARY HSIEH 081710		size
				appd	JOSEPH HSIA 081710		A4
sheet index	revision sheet	C	C	C			type
		1	2	3			CUSTOMER Drawing

PRODUCT NUMBER	SERIES NAME	PITCH
20020325-GXXXXXLf	24-500	5.00 mm



POLE	04	06
Dim L	10.0 [.394"]	15.0 [.590"]
Dim B	5.0 [.196"]	10.0 [.394"]
Tol.	±0.15 [.006"]	



P.C.B LAYOUT

mat'l. code				surface ASME Y14.5 ✓	tolerance ASME Y14.5	projection MM [INCH]	product family TERMINAL BLOCK
ltr	ecn	no	dr	date	tolerances unless otherwise specified		title
c					angles X±1°		TERMINAL BLOCK
					linear X.X±0.5		FIXED SIGNAL PLUG, OFFSET LEFT, 2-LEVEL
					angular X.X±0.3		
					scale X.XX±0.1		
			dr	WENDY CHEN	081710	FCI	dwg no
			enr	JASON HSU	081710		sheet 2 of 3
			chr	GARY HSIEH	081710		size
			appd	JOSEPH HSIA	081710		A4
sheet index	revision	sheet					type
							CUSTOMER Drawing



Copyright FCI.



FCIconnect.com

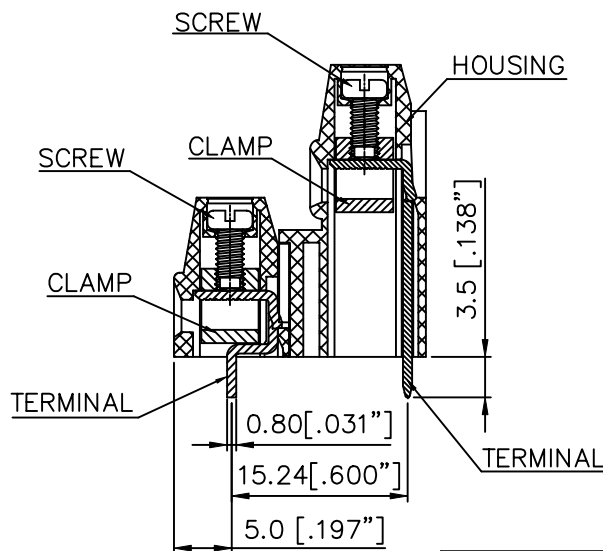
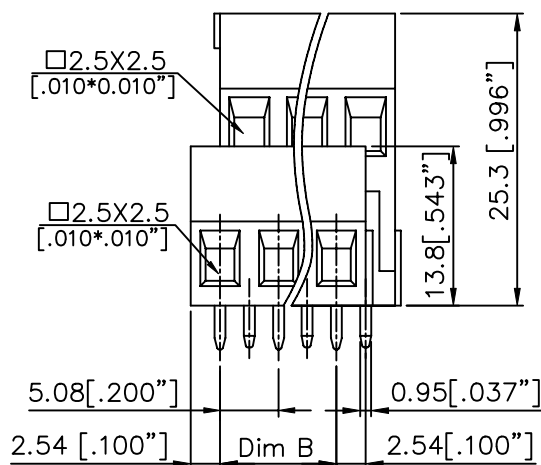
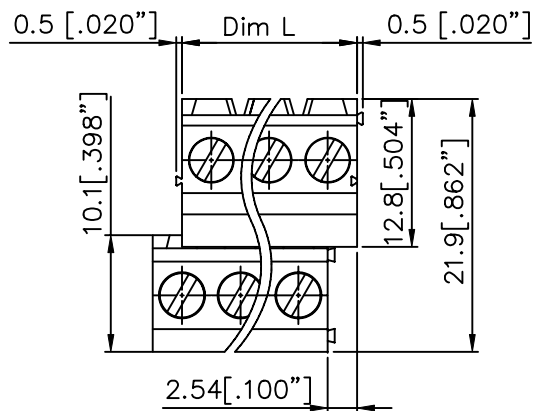


1 | 2

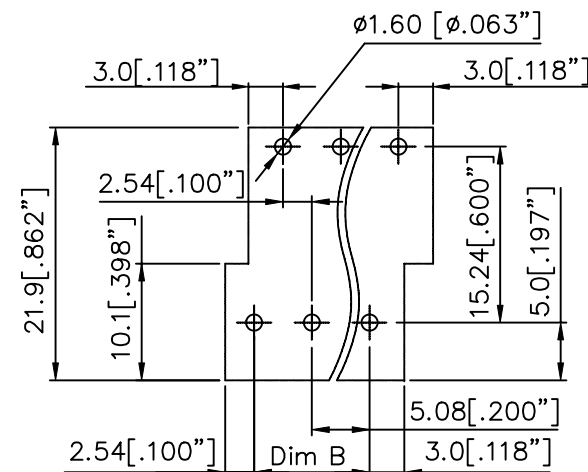
3 |

4

PRODUCT NUMBER	SERIES NAME	PITCH
20020325-HXXXXXXLF	24-508	5.08 mm



POLE	04	06
Dim L	10.16 [.400"]	15.24 [.600"]
Dim B	5.08 [.200"]	10.16 [.400"]
Tol.	±0.15 [.006"]	



P.C.B LAYOUT

mat'l. code				surface ASME Y14.5	tolerance ASME Y14.5	projection MM [INCH]	product family TERMINAL BLOCK
ltr	ecn	no	dr	date	tolerances unless otherwise specified		title
c					angles X±1°		TERMINAL BLOCK
					linear X.X±0.3		FIXED SIGNAL PLUG, OFFSET LEFT, 2-LEVEL
					scale X.XX±0.1		dwg no
					dr WENDY CHEN 081710	FCI	sheet 3 of 3
					enr JASON HSU 081710		size
					chr GARY HSIEH 081710		20020325
					appd JOSEPH HSIA 081710		A4
sheet index	revision	sheet					type
							CUSTOMER Drawing

# Mouser Electronics

Authorized Distributor

Click to View Pricing, Inventory, Delivery & Lifecycle Information:

[Amphenol:](#)

[20020325-H042B01LF](#)

[FCI / Amphenol:](#)

[20020325-G061B01LF](#) [20020325-G041B01LF](#) [20020325-H041B01LF](#) [20020325-H061B01LF](#)