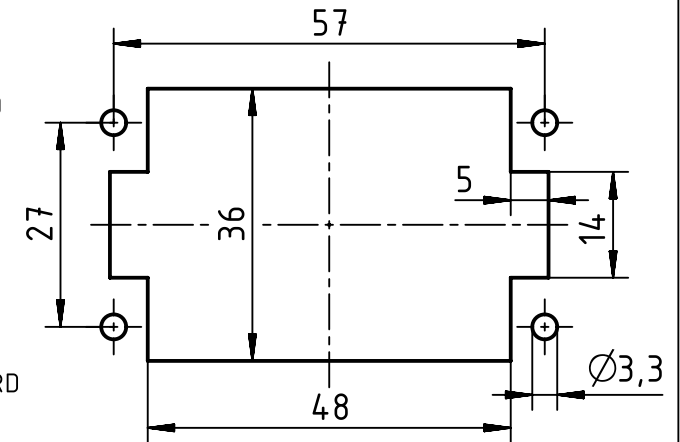




FOR USE WITH HAN 10E CRIMP: AWG 14, 16
 FOR USE WITH Cable Type:
 PLTC, PLTC-ER, ITC, ITC-ER, MC, MV, AND TC
 FOR USE IN CLASS I, DIVISION 2 GROUPS A, B, C AND D
 HAZARDOUS LOCATIONS OR UNCLASSIFIED LOCATIONS

THE INSTALLATION MUST BE IN
 ACCORDANCE WITH THE
 ASSOCIATED LOCATION
 RESTRICTIONS OF THE NATIONAL
 ELECTRICAL CODE OR CANADIAN
 ELECTRICAL CODE AS
 APPLICABLE, INCLUDING ISSUES
 SUCH AS THE ROUTING,
 SUPPORT AND LENGTH OF THE
 INVOLVED CORD OR CABLE.

WARNING
 EXPLOSION HAZARD
 DO NOT CONNECT
 OR DISCONNECT
 UNDER LOAD!

panel cut out



		All Dimensions in mm Original Size DIN A4		Scale 1:1		Free size tol.		Ref.	
								Sub.	
		All rights reserved		Created by FINKEV		Inspected by BERGHORN		Standardisation TIEMANNA	
		Department EL PD - DE						Date 2017-12-08	
								State Final Release	
				Title Han 10Ex UL-F-c				Doc-Key / ECM-Nr. 100669756/UGD/001/C 500000128960	
HARTING Electric GmbH & Co. KG									
D-32339 Espelkamp									
		Type TB		Number 09 36 510 2702				Rev. C	
								Page 1/1	

Mouser Electronics

Authorized Distributor

Click to View Pricing, Inventory, Delivery & Lifecycle Information:

[HARTING:](#)

[09365102702](#)