



Part Number : [1731090629](#)
Product Description : FCT Standard-Density D-Sub Connector, Female, Straight, PCB Through Hole, 10.30mm Tail Length, Gold Plating, 50 Mating Cycles, M3 Clinch Nut, 25 Circuits, White Insulator
Series Number : 173109
Status : Active
Product Category : D-Sub Connectors
Engineering Number : FZ25S1G3

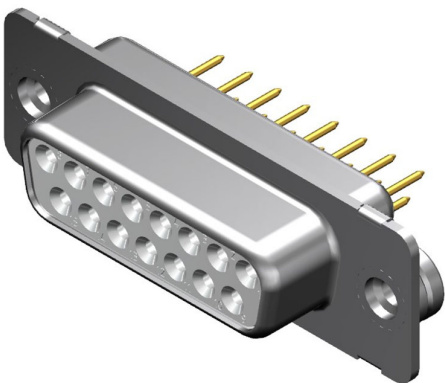


Illustration only.
The pole size may deviate from the image.

Documents & Resources

Drawings


[Drawing 1731090629_sd.pdf](#)

3D Models and Design Files

[3D Model 1731090629_stp.zip](#)

Product Environment Compliance

Compliance

GADSL/IMDS	Not Relevant
China RoHS	
EU ELV	Not Relevant
Low-Halogen Status	Not Reviewed per IEC 61249-2-21
REACH SVHC	Not Reviewed per D(2024)4144-DC (27 June 2024)
EU RoHS	Compliant with Exemption 6(c) per EU 2015/863

[Multiple Part Product Compliance Statements](#)

- Eu RoHS
- REACH SVHC
- Low-Halogen

[Multiple Part Industry Compliance Documents](#)

- IPC 1752A Class C

- IPC 1752A Class D
- Molex Product Compliance Declaration
- IEC-62474
- chemSHERPA (xml)

EU RoHS Certificate of Compliance

Part Details

General

Status	Active
Category	D-Sub Connectors
Series	173109
Description	FCT Standard-Density D-Sub Connector, Female, Straight, PCB Through Hole, 10.30mm Tail Length, Gold Plating, 50 Mating Cycles, M3 Clinch Nut, 25 Circuits, White Insulator
IP Rating	IP20
Magnetic	Yes
Product Family	FCT D-Sub Connectors
Product Name	FCT Products
Type	Standard Density
UPC	191128458061

Electrical

Current - Maximum per Contact	7.5A
Shielded	Yes

Physical

Circuits (Loaded)	25
Circuits (maximum)	25
Color - Resin	White
Durability (mating cycles max)	50
Gender	Female
Material - Contact	Copper Alloy
Material - Resin	PBT
Material - Shell	Steel

Net Weight	12.800/g
Number of Rows	2
Orientation	Straight
Packaging Type	Carton
Panel Mount	Rear
Panel Mount Method	Thread-In
PC Tail Length	10.30mm
Pitch - Mating Interface	2.84mm
Pitch - Termination Interface	2.84mm
Plating - Contact	Gold over Nickel
Plating - Shell	Tin
Polarized to Mating Part	Yes
Polarized to PCB	Yes
Ports	1
Temperature Range - Operating	-55° to +125°C
Termination Style	Through Hole
Waterproof / Dustproof	No
Waterproof / Dustproof Type	IP20

Mates With / Use With

Mates with Part(s)

Description	Part Number
Mates With	FCT Standard-Density D-Sub, Size 3, 25 Position, Plug
