

HC-EVO-B24-SHWSC-2SSM32-PLRBK - Housing



1421369

<https://www.phoenixcontact.com/us/products/1421369>

Please be informed that the data shown in this PDF document is generated from our online catalog. Please find the complete data in the user documentation. Our general terms of use for downloads are valid.



Surface mounting housing B24, with single locking latch, material: PA 6.6-FR, protective cover material: PC, cable outlets: 2, lateral, 2x M32, height: 84 mm, cable gland: none, protective cover: yes, Standard, including 2x reducing adapter

Your advantages

- Lower costs than metal version
- Low weight
- Lower risk of condensation

Commercial data

| | |
|--------------------------------------|---------------------|
| Item number | 1421369 |
| Packing unit | 1 pc |
| Minimum order quantity | 1 pc |
| Sales key | BF57 |
| Product key | BF7APL |
| Catalog page | Page 632 (C-2-2019) |
| GTIN | 4055626264950 |
| Weight per piece (including packing) | 287.1 g |
| Weight per piece (excluding packing) | 281.9 g |
| Customs tariff number | 85389099 |
| Country of origin | PL |

Technical data

Notes

| | |
|---------|--|
| General | For contact inserts HC-B24, BB46, D64, DD108, M, K, HV10-I-PT, HV 10-E...C |
|---------|--|

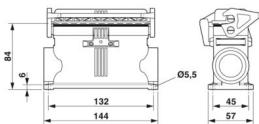
Product properties

| | |
|------------------------------|----------------------------|
| Product type | Housing with locking latch |
| Housing type | Surface mounting housing |
| Product family | HC-EVO-B |
| Application | Standard |
| Type | B24 |
| No. of cable outlets | 2 |
| Type of the screw connection | 2x M32 |
| Type | Tall design |
| Protective cover | yes |
| Cable outlet | lateral |
| Pg screw connection | none |

Data management status

| | |
|------------------|----|
| Article revision | 03 |
|------------------|----|

Dimensions

| | |
|---------------------|--|
| Dimensional drawing |  |
| Width | 57 mm |
| Height | 84 mm |
| Length | 144 mm |
| Hole diameter | 5.5 mm |

Material specifications

| | |
|--|-----------------------|
| Flammability rating according to UL 94 | V0 (Housing) |
| | V0 (Interlock) |
| | V0 (Protective cover) |
| Seal material | NBR |
| Housing material | PA 6.6-FR |
| Material, protective cover | PC |
| Locking latch material | PA |

Mechanical properties

Mechanical data

HC-EVO-B24-SHWSC-2SSM32-PLRBK - Housing



1421369

<https://www.phoenixcontact.com/us/products/1421369>

| | |
|------------------------------|--------|
| Type of the screw connection | 2x M32 |
| Locking type | Latch |

Connection data

| | |
|-------------------|---|
| Tightening torque | 2 Nm ... 3 Nm (for M5 mounting screws on the surface-mount housing) |
|-------------------|---|

Mounting

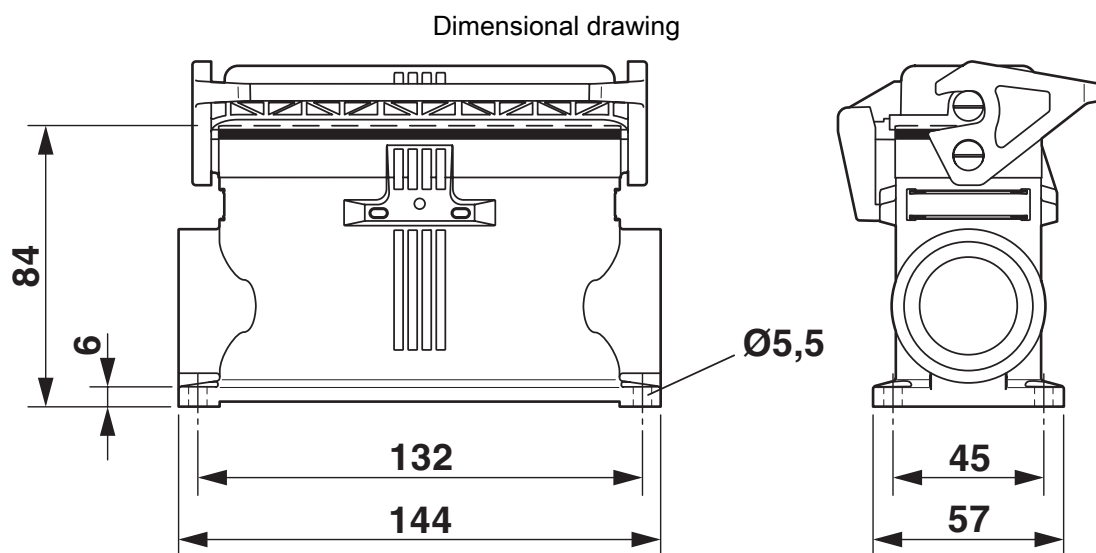
| | |
|---------------|---|
| Assembly note | Two plastic reductions M40 to M32 are provided |
| | One of the two openings for the screw connections is sealed but can be broken open using a screwdriver. |

Environmental and real-life conditions

Ambient conditions

| | |
|---------------------------------|--|
| Degree of protection | IP66 (when plugged in or with locked protective cover) |
| Enclosure rating (NEMA) | 12 (UL 50e) |
| Impact strength | IK08 |
| Ambient temperature (operation) | -40 °C ... 125 °C |

Drawings




Dimensional drawing

Approvals

To download certificates, visit the product detail page: <https://www.phoenixcontact.com/us/products/1421369>

**DNV**
Approval ID: TAE000037S

**EAC**
Approval ID: RU C-DE.AI30.B.01102

**cUL Recognized**
Approval ID: E255026

**UL Recognized**
Approval ID: E255026

cULus Recognized

Classifications

ECLASS

| | |
|-------------|----------|
| ECLASS-11.0 | 27440202 |
| ECLASS-12.0 | 27440202 |
| ECLASS-13.0 | 27440202 |

ETIM

| | |
|----------|----------|
| ETIM 9.0 | EC000437 |
|----------|----------|

UNSPSC

| | |
|-------------|----------|
| UNSPSC 21.0 | 31261500 |
|-------------|----------|

Environmental product compliance

| | |
|---|--|
| EU RoHS | |
| Fulfills EU RoHS substance requirements | Yes, No exemptions |
| China RoHS | |
| Environment friendly use period (EFUP) | EFUP-E |
| | No hazardous substances above the limits |
| EU REACH SVHC | |
| REACH candidate substance (CAS No.) | No substance above 0.1 wt% |
| EF3.0 Climate Change | |
| CO2e kg | 2.382 kg CO2e |