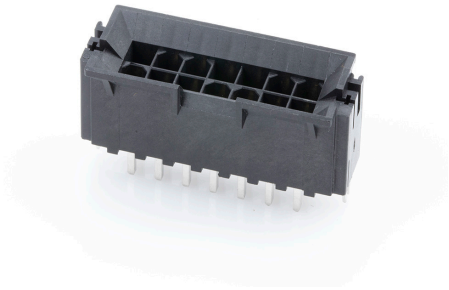




**Part Number :** [440680061](#)  
**Product Description :** Mini-Fit BMI, 260C Wave Solderable, 4.20mm Pitch, Dual Row, Vertical, for 1.60mm PCB, 14 Circuits, Gold (Au) Plating, with Solderable Retention Clip  
**Series Number :** 44068  
**Status :** Active  
**Product Category :** PCB Headers and Receptacles



## Documents & Resources


**Drawings**  
[440680061\\_sd.pdf](#)  
[PK-43879-001-000.pdf](#)

**3D Models and Design Files**  
[440680061\\_stp.zip](#)

**Specifications**  
[PS-43810-001-001.pdf](#)  
[PS-45750-001-001.pdf](#)  
[TS-43879-001-001.pdf](#)

## Product Environment Compliance

### Compliance

GADSL/IMDS	Not Relevant
China RoHS	
EU ELV	Not Relevant
Low-Halogen Status	Not Low-Halogen per IEC 61249-2-21
REACH SVHC	Not Contained per D(2024)4144-DC (27 June 2024)
EU RoHS	Compliant per EU 2015/863

### Multiple Part Product Compliance Statements

- Eu RoHS
- REACH SVHC
- Low-Halogen

## Multiple Part Industry Compliance Documents

- IPC 1752A Class C
- IPC 1752A Class D
- Molex Product Compliance Declaration
- IEC-62474
- chemSHERPA (xml)

## EU RoHS Certificate of Compliance

---

### Part Details

#### General

Status	Active
Category	PCB Headers and Receptacles
Series	44068
Description	Mini-Fit BMI, 260C Wave Solderable, 4.20mm Pitch, Dual Row, Vertical, for 1.60mm PCB, 14 Circuits, Gold (Au) Plating, with Solderable Retention Clip
Application	Board-to-Board, Power, Wire-to-Board
Comments	Current = 13A max. per circuit when header is mated to a receptacle loaded with 45750 Mini-Fit Plus HCS Crimp Terminal Crimped to 16 AWG wire. See Molex product specification PS-45750-001 for additional current de-rating information.
Component Type	PCB Header
Product Name	Mini-Fit BMI
UPC	800756049540

#### Agency

CSA	LR19980
UL	E29179

#### Electrical

Current - Maximum per Contact	13.0A
Voltage - Maximum	600V

#### Physical

Breakaway	No
Circuits (Loaded)	14
Circuits (maximum)	14
Color - Resin	Black
Durability (mating cycles max)	30
Flammability	94V-0
Glow-Wire Capable	No
Material - Metal	Brass
Material - Plating Mating	Gold
Material - Plating Termination	Gold
Material - Resin	High Temperature Thermoplastic
Net Weight	6.952/g
Number of Rows	2
Orientation	Vertical
Packaging Type	Tray
PC Tail Length	4.42mm
PCB Locator	Yes
PCB Retention	Yes
PCB Thickness - Recommended	2.40mm
Pitch - Mating Interface	4.20mm
Pitch - Termination Interface	4.20mm
Plating min - Mating	0.762μm
Plating min - Termination	0.762μm
Polarized to PCB	Yes
Shrouded	Partial
Stackable	No
Temperature Range - Operating	-40° to +105°C
Termination Interface Style	Through Hole

## Solder Process Data

Max-Duration	5
Lead-Free Process Capability	WAVE
Max-Cycle	1
Max-Temp	260

---

## Mates With / Use With

### Mates with Part(s)

Description	Part Number
Mini-Fit BMI Vertical Dual Row Receptacle Headers	<u>42385</u>
Mini-Fit BMI Dual Row Receptacle Housings	<u>42474</u>
Mini-Fit HCS Vertical Dual Row PCB Receptacles	<u>44475</u>
Mini-Fit BMI Dual Row Receptacle Housings	<u>44516</u>
Mini-Fit Jr. Receptacle Housings	<u>5557</u>