

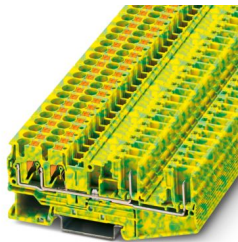
# PT 4-QUATTRO/2P-PE - Ground terminal



3211999

<https://www.phoenixcontact.com/us/products/3211999>

Please be informed that the data shown in this PDF document is generated from our online catalog. Please find the complete data in the user documentation. Our general terms of use for downloads are valid.



Ground terminal, connection method: Push-in / plug connection, Rated cross section: 4 mm<sup>2</sup>, cross section: 0.2 mm<sup>2</sup> - 6 mm<sup>2</sup>, mounting: NS 35/7,5, NS 35/15, color: green-yellow

## Your advantages

- The compact design and front connection enable wiring in a confined space<br/>
- In addition to the testing option in the double function shaft, all terminal blocks provide an additional test pick-off
- The Push-in connection terminal blocks are characterized by the system features of the CLIPLINE complete system and by easy and tool-free wiring of conductors with ferrules or solid conductors

## Commercial data

Item number	3211999
Packing unit	50 pc
Minimum order quantity	50 pc
Sales key	BE22
Product key	BE2242
Catalog page	Page 325 (C-1-2019)
GTIN	4046356482936
Weight per piece (including packing)	15.172 g
Weight per piece (excluding packing)	15 g
Customs tariff number	85369010
Country of origin	PL

# PT 4-QUATTRO/2P-PE - Ground terminal



3211999

<https://www.phoenixcontact.com/us/products/3211999>

## Technical data

### Product properties

Product type	Plug-in terminal block
Number of connections	4
Number of rows	1

### Data management status

Article revision	03
------------------	----

### Insulation characteristics

Overvoltage category	III
Degree of pollution	3

### Electrical properties

Rated surge voltage	8 kV
Maximum power dissipation for nominal condition	1.02 W

### Connection data

Grounding foot	Yes
Number of connections per level	4
Nominal cross section	4 mm <sup>2</sup>
Note	Please observe the current carrying capacity of the DIN rails.
Stripping length	10 mm ... 12 mm
Internal cylindrical gage	A4
Conductor cross section rigid	0.2 mm <sup>2</sup> ... 6 mm <sup>2</sup>
Cross section AWG	24 ... 10 (converted acc. to IEC)
Conductor cross section flexible	0.2 mm <sup>2</sup> ... 6 mm <sup>2</sup>
Conductor cross section, flexible [AWG]	24 ... 10 (converted acc. to IEC)
Conductor cross-section flexible (ferrule without plastic sleeve)	0.25 mm <sup>2</sup> ... 4 mm <sup>2</sup>
Flexible conductor cross section (ferrule with plastic sleeve)	0.25 mm <sup>2</sup> ... 4 mm <sup>2</sup>
Maximum load current	with 6 mm <sup>2</sup> conductor cross section, rigid
Nominal cross section	4 mm <sup>2</sup>

### Connection cross sections directly pluggable

Conductor cross section rigid	0.5 mm <sup>2</sup> ... 6 mm <sup>2</sup>
Conductor cross-section flexible (ferrule without plastic sleeve)	0.5 mm <sup>2</sup> ... 4 mm <sup>2</sup>
Flexible conductor cross section (ferrule with plastic sleeve)	0.5 mm <sup>2</sup> ... 4 mm <sup>2</sup>

### Dimensions

Width	6.2 mm
End cover width	2.2 mm
Height	92.1 mm
Depth on NS 35/7,5	36.5 mm
Depth on NS 35/15	44 mm

# PT 4-QUATTRO/2P-PE - Ground terminal



3211999

<https://www.phoenixcontact.com/us/products/3211999>

## Material specifications

Color	green-yellow
Flammability rating according to UL 94	V0
Insulating material group	I
Insulating material	PA
Static insulating material application in cold	-60 °C
Temperature index of insulation material (DIN EN 60216-1 (VDE 0304-21))	130 °C
Relative insulation material temperature index (Elec., UL 746 B)	130 °C
Fire protection for rail vehicles (DIN EN 45545-2) R22	HL 1 - HL 3
Fire protection for rail vehicles (DIN EN 45545-2) R23	HL 1 - HL 3
Fire protection for rail vehicles (DIN EN 45545-2) R24	HL 1 - HL 3
Fire protection for rail vehicles (DIN EN 45545-2) R26	HL 1 - HL 3
Calorimetric heat release NFPA 130 (ASTM E 1354)	28 MJ/kg
Surface flammability NFPA 130 (ASTM E 162)	passed
Specific optical density of smoke NFPA 130 (ASTM E 662)	passed
Smoke gas toxicity NFPA 130 (SMP 800C)	passed

## Mechanical properties

### Mechanical data

Open side panel	Yes
-----------------	-----

## Environmental and real-life conditions

### Service life

Insertion/withdrawal cycles	100
-----------------------------	-----

### Oscillation/broadband noise

Specification	DIN EN 50155 (VDE 0115-200):2008-03
Spectrum	Service life test category 1, class B, body mounted
Frequency	$f_1 = 5 \text{ Hz}$ to $f_2 = 150 \text{ Hz}$
ASD level	$0.964 \text{ (m/s}^2\text{)}^2/\text{Hz}$
Acceleration	0.58g
Test duration per axis	5 h
Test directions	X-, Y- and Z-axis
Result	Test passed

### Shocks

Specification	DIN EN 50155 (VDE 0115-200):2008-03
Pulse shape	Half-sine
Acceleration	5g
Shock duration	30 ms
Number of shocks per direction	3
Test directions	X-, Y- and Z-axis (pos. and neg.)
Result	Test passed

# PT 4-QUATTRO/2P-PE - Ground terminal



3211999

<https://www.phoenixcontact.com/us/products/3211999>

## Ambient conditions

Ambient temperature (operation)	-60 °C (max. operating temperature see derating curve)
Ambient temperature (storage/transport)	-25 °C ... 60 °C (for a short time, no longer than 24 h, -60°C to +70°C)
Ambient temperature (assembly)	-5 °C ... 70 °C
Ambient temperature (actuation)	-5 °C ... 70 °C
Permissible humidity (operation)	20 % ... 90 %
Permissible humidity (storage/transport)	30 % ... 70 %

## Mounting

Mounting type	NS 35/7,5
	NS 35/15
Thread type	()

# PT 4-QUATTRO/2P-PE - Ground terminal

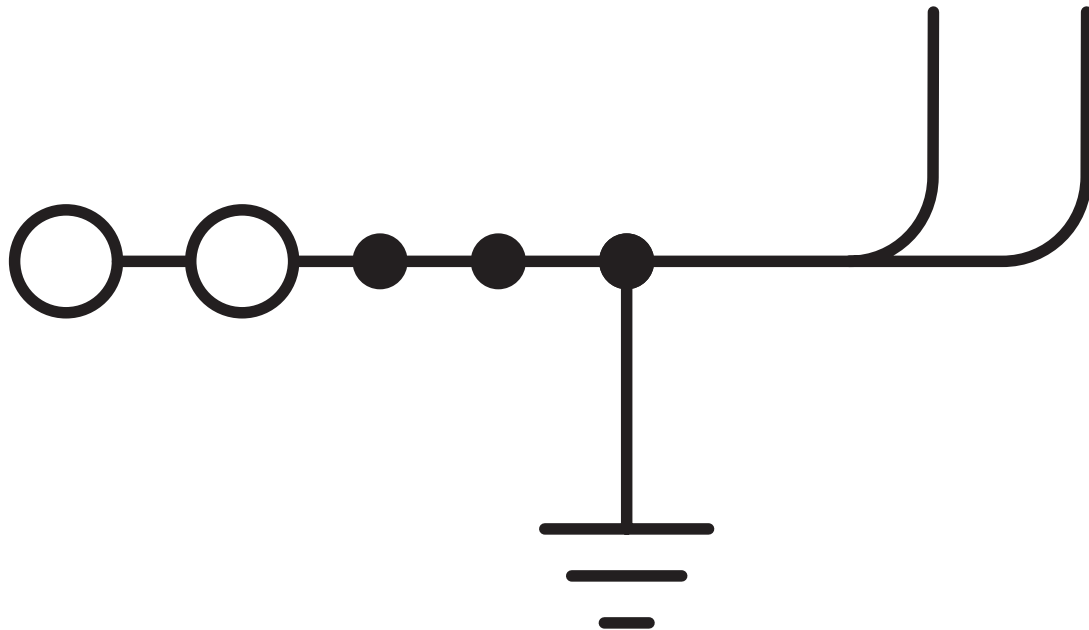


3211999

<https://www.phoenixcontact.com/us/products/3211999>

## Drawings

Circuit diagram



# PT 4-QUATTRO/2P-PE - Ground terminal





3211999


<https://www.phoenixcontact.com/us/products/3211999>


## Approvals

To download certificates, visit the product detail page: <https://www.phoenixcontact.com/us/products/3211999>

 <b>CSA</b> Approval ID: 2030668				
	Nominal voltage U <sub>N</sub>	Nominal current I <sub>N</sub>	Cross section AWG	Cross section mm <sup>2</sup>
	-	-	24 - 10	-

 <b>EAC</b> Approval ID: RU C-DE.BL08.B.00644				
---	--	--	--	--

 <b>cULus Recognized</b> Approval ID: E60425				
--	--	--	--	--

 <b>cULus Recognized</b> Approval ID: E60425				
--	--	--	--	--

# PT 4-QUATTRO/2P-PE - Ground terminal



3211999

<https://www.phoenixcontact.com/us/products/3211999>

## Classifications

### ECLASS

ECLASS-11.0	27141141
ECLASS-13.0	27250103

### ETIM

ETIM 9.0	EC000901
----------	----------

### UNSPSC

UNSPSC 21.0	39121400
-------------	----------

# PT 4-QUATTRO/2P-PE - Ground terminal



3211999

<https://www.phoenixcontact.com/us/products/3211999>

## Environmental product compliance

EU RoHS	
Fulfills EU RoHS substance requirements	Yes, No exemptions
China RoHS	
Environment friendly use period (EFUP)	EFUP-E
	No hazardous substances above the limits
EU REACH SVHC	
REACH candidate substance (CAS No.)	No substance above 0.1 wt%



# PT 4-QUATTRO/2P-PE - Ground terminal



3211999

<https://www.phoenixcontact.com/us/products/3211999>

## Accessories

### FBS 2-6 - Plug-in bridge

3030336

<https://www.phoenixcontact.com/us/products/3030336>



Plug-in bridge, pitch: 6.2 mm, number of positions: 2, color: red

---

### FBS 3-6 - Plug-in bridge

3030242

<https://www.phoenixcontact.com/us/products/3030242>



Plug-in bridge, pitch: 6.2 mm, number of positions: 3, color: red

## PT 4-QUATTRO/2P-PE - Ground terminal

3211999

<https://www.phoenixcontact.com/us/products/3211999>



## FBS 4-6 - Plug-in bridge

3030255

<https://www.phoenixcontact.com/us/products/3030255>

Plug-in bridge, pitch: 6.2 mm, number of positions: 4, color: red



---

## FBS 5-6 - Plug-in bridge

3030349

<https://www.phoenixcontact.com/us/products/3030349>

Plug-in bridge, pitch: 6.2 mm, number of positions: 5, color: red



## PT 4-QUATTRO/2P-PE - Ground terminal

3211999

<https://www.phoenixcontact.com/us/products/3211999>



## FBS 6-6 - Plug-in bridge

1008238

<https://www.phoenixcontact.com/us/products/1008238>



Plug-in bridge, One side not fully isolated, pitch: 6.2 mm, number of positions: 6, color: red

---

## FBS 10-6 - Plug-in bridge

3030271

<https://www.phoenixcontact.com/us/products/3030271>



Plug-in bridge, pitch: 6.2 mm, number of positions: 10, color: red

# PT 4-QUATTRO/2P-PE - Ground terminal

3211999

<https://www.phoenixcontact.com/us/products/3211999>



## FBS 20-6 - Plug-in bridge

3030365

<https://www.phoenixcontact.com/us/products/3030365>



Plug-in bridge, pitch: 6.2 mm, number of positions: 20, color: red

---

## FBSR 2-6 - Plug-in bridge

3033715

<https://www.phoenixcontact.com/us/products/3033715>



Plug-in bridge, pitch: 6.2 mm, number of positions: 2, color: red

## PT 4-QUATTRO/2P-PE - Ground terminal

3211999

<https://www.phoenixcontact.com/us/products/3211999>



### FBSR 3-6 - Plug-in bridge

3001594

<https://www.phoenixcontact.com/us/products/3001594>



Plug-in bridge, pitch: 6.2 mm, number of positions: 3, color: red

---

### FBSR 4-6 - Plug-in bridge

3001595

<https://www.phoenixcontact.com/us/products/3001595>



Plug-in bridge, pitch: 6.2 mm, number of positions: 4, color: red

# PT 4-QUATTRO/2P-PE - Ground terminal

3211999

<https://www.phoenixcontact.com/us/products/3211999>



## FBSR 5-6 - Plug-in bridge

3001596

<https://www.phoenixcontact.com/us/products/3001596>



Plug-in bridge, pitch: 6.2 mm, number of positions: 5, color: red

---

## FBSR 10-6 - Plug-in bridge

3033716

<https://www.phoenixcontact.com/us/products/3033716>



Plug-in bridge, pitch: 6.2 mm, number of positions: 10, color: red

## PT 4-QUATTRO/2P-PE - Ground terminal

3211999

<https://www.phoenixcontact.com/us/products/3211999>



## FBSRH 2-6 - Short-circuit connector

3033812

<https://www.phoenixcontact.com/us/products/3033812>



Short-circuit connector, pitch: 6.2 mm, number of positions: 2, color: red

---

## FBS 2-6 BU - Plug-in bridge

3036932

<https://www.phoenixcontact.com/us/products/3036932>



Plug-in bridge, pitch: 6.2 mm, number of positions: 2, color: blue

# PT 4-QUATTRO/2P-PE - Ground terminal

3211999

<https://www.phoenixcontact.com/us/products/3211999>



## FBS 3-6 BU - Plug-in bridge

3036945

<https://www.phoenixcontact.com/us/products/3036945>



Plug-in bridge, pitch: 6.2 mm, number of positions: 3, color: blue

---

## FBS 4-6 BU - Plug-in bridge

3036958

<https://www.phoenixcontact.com/us/products/3036958>



Plug-in bridge, pitch: 6.2 mm, number of positions: 4, color: blue



## PT 4-QUATTRO/2P-PE - Ground terminal

3211999

<https://www.phoenixcontact.com/us/products/3211999>



## FBS 5-6 BU - Plug-in bridge

3036961

<https://www.phoenixcontact.com/us/products/3036961>



Plug-in bridge, pitch: 6.2 mm, number of positions: 5, color: blue

---

## FBS 10-6 BU - Plug-in bridge

3032198

<https://www.phoenixcontact.com/us/products/3032198>



Plug-in bridge, pitch: 6.2 mm, number of positions: 10, color: blue

## PT 4-QUATTRO/2P-PE - Ground terminal

3211999

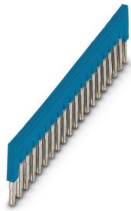
<https://www.phoenixcontact.com/us/products/3211999>



## FBS 20-6 BU - Plug-in bridge

3032208

<https://www.phoenixcontact.com/us/products/3032208>



Plug-in bridge, pitch: 6.2 mm, number of positions: 20, color: blue

---

## FBS 50-6 BU - Plug-in bridge

3032211

<https://www.phoenixcontact.com/us/products/3032211>



Plug-in bridge, pitch: 6.2 mm, number of positions: 50, color: blue

## PT 4-QUATTRO/2P-PE - Ground terminal

3211999

<https://www.phoenixcontact.com/us/products/3211999>



## ATP-ST QUATTRO - Partition plate

3030815

<https://www.phoenixcontact.com/us/products/3030815>

Partition plate, depth: 45 mm, width: 2 mm, height: 90.9 mm, color: gray



---

## GBS 5-25X12 - Group marker label for terminal marking

0810588

<https://www.phoenixcontact.com/us/products/0810588>



Group marker label, snaps onto terminal center for screw, spring-cage and quick connection terminal blocks, labeled with a 25 x 12 mm label or manually with the B-STIFT, in the foot part with ZB 5

## PT 4-QUATTRO/2P-PE - Ground terminal

3211999

<https://www.phoenixcontact.com/us/products/3211999>



## GBS-ZB/26X6 - Group marker label for terminal marking

0809298

<https://www.phoenixcontact.com/us/products/0809298>



Group marking label, snaps onto terminal center for screw, spring-cage and quick connection terminal blocks, labeled with ESL 26x6 mm or EST 25x6 mm, in the foot part with Zack marker strip, length: 29 mm

---

## CARRIER-TM 300 - Marker carriers

0828282

<https://www.phoenixcontact.com/us/products/0828282>



**Marker adapter**, 300 mm in length, for manual cutting, can be engaged in a flat marker groove, for ZB ..., UC-TM ... or UCT-TM ...

# PT 4-QUATTRO/2P-PE - Ground terminal



3211999

<https://www.phoenixcontact.com/us/products/3211999>

## WS PT 4 - Warning label

1029563

<https://www.phoenixcontact.com/us/products/1029563>



Warning label, 5-section, yellow/black, labeled: Lightning flash, mounting type: plug in, for terminal block width: 6.2 mm

---

## PC - Coding star

3040588

<https://www.phoenixcontact.com/us/products/3040588>



Coding star, 4-section, depth: 6 mm, width: 3 mm, height: 3 mm, color: red

# PT 4-QUATTRO/2P-PE - Ground terminal



3211999

<https://www.phoenixcontact.com/us/products/3211999>

## CP 4/2 - Connector housing

1066559

<https://www.phoenixcontact.com/us/products/1066559>



Connector housing, nom. voltage: 800 V, nominal current: 10 A, connection method: Crimp connection, pitch: 6.2 mm, depth: 32.4 mm, width: 11.3 mm, height: 14.95 mm, number of positions: 2, color: gray, mounting type: Plug-in mounting

---

## CP 4/3 - Connector housing

1066560

<https://www.phoenixcontact.com/us/products/1066560>



Connector housing, nom. voltage: 800 V, nominal current: 10 A, connection method: Crimp connection, pitch: 6.2 mm, depth: 32.4 mm, width: 17.5 mm, height: 14.95 mm, number of positions: 3, color: gray, mounting type: Plug-in mounting

# PT 4-QUATTRO/2P-PE - Ground terminal

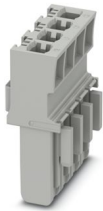
3211999

<https://www.phoenixcontact.com/us/products/3211999>

## CP 4/4 - Connector housing

1066561

<https://www.phoenixcontact.com/us/products/1066561>



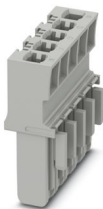
Connector housing, nom. voltage: 800 V, nominal current: 10 A, connection method: Crimp connection, pitch: 6.2 mm, depth: 32.4 mm, width: 23.5 mm, height: 14.95 mm, number of positions: 4, color: gray, mounting type: Plug-in mounting

---

## CP 4/5 - Connector housing

1066562

<https://www.phoenixcontact.com/us/products/1066562>



Connector housing, nom. voltage: 800 V, nominal current: 10 A, connection method: Crimp connection, pitch: 6.2 mm, depth: 32.4 mm, width: 29.8 mm, height: 14.95 mm, number of positions: 5, color: gray, mounting type: Plug-in mounting

# PT 4-QUATTRO/2P-PE - Ground terminal

3211999

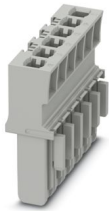
<https://www.phoenixcontact.com/us/products/3211999>



## CP 4/6 - Connector housing

1066563

<https://www.phoenixcontact.com/us/products/1066563>



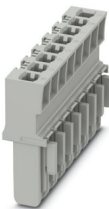
Connector housing, nom. voltage: 800 V, nominal current: 10 A, connection method: Crimp connection, pitch: 6.2 mm, depth: 32.4 mm, width: 35.9 mm, height: 14.95 mm, number of positions: 6, color: gray, mounting type: Plug-in mounting

---

## CP 4/8 - Connector housing

1066564

<https://www.phoenixcontact.com/us/products/1066564>



Connector housing, nom. voltage: 800 V, nominal current: 10 A, connection method: Crimp connection, pitch: 6.2 mm, depth: 32.4 mm, width: 48.2 mm, height: 14.95 mm, number of positions: 8, color: gray, mounting type: Plug-in mounting



# PT 4-QUATTRO/2P-PE - Ground terminal

3211999

<https://www.phoenixcontact.com/us/products/3211999>



## CP 4/10 - Connector housing

1066565

<https://www.phoenixcontact.com/us/products/1066565>



Connector housing, nom. voltage: 800 V, nominal current: 10 A, connection method: Crimp connection, pitch: 6.2 mm, depth: 32.4 mm, width: 60.5 mm, height: 14.95 mm, number of positions: 10, color: gray, mounting type: Plug-in mounting

---

## DS-ST 4 - Cover segment

3036615

<https://www.phoenixcontact.com/us/products/3036615>



Cover segment, depth: 36.5 mm, height: 87 mm, color: gray

## PT 4-QUATTRO/2P-PE - Ground terminal

3211999

<https://www.phoenixcontact.com/us/products/3211999>



## DS-ST 4/2,5 - Cover segment

3032156

<https://www.phoenixcontact.com/us/products/3032156>



Cover segment, depth: 36.5 mm, height: 72 mm, color: gray

---

## LPS-6/E - Service connector

3270540

<https://www.phoenixcontact.com/us/products/3270540>



Service connector, nom. voltage: 800 V, nominal current: 24 A, number of positions: 1, connection method: Push-in connection, Rated cross section: 2.5 mm<sup>2</sup>, cross section: 0.14 mm<sup>2</sup>- 4 mm<sup>2</sup>, color: red

## PT 4-QUATTRO/2P-PE - Ground terminal

3211999

<https://www.phoenixcontact.com/us/products/3211999>



## LPS-6 - Service connector

3270541

<https://www.phoenixcontact.com/us/products/3270541>



Service connector, nom. voltage: 800 V, nominal current: 24 A, number of positions: 1, connection method: Push-in connection, Rated cross section: 2.5 mm<sup>2</sup>, cross section: 0.14 mm<sup>2</sup>- 4 mm<sup>2</sup>, color: red

---

## LPO 4/E - Pick-off plug

3270519

<https://www.phoenixcontact.com/us/products/3270519>



Pick-off plug, nom. voltage: 800 V, nominal current: 24 A, number of positions: 1, connection method: Push-in connection, Rated cross section: 2.5 mm<sup>2</sup>, cross section: 0.14 mm<sup>2</sup>- 4 mm<sup>2</sup>, color: gray

## PT 4-QUATTRO/2P-PE - Ground terminal

3211999

<https://www.phoenixcontact.com/us/products/3211999>



## LPO 4 - Pick-off plug

3270522

<https://www.phoenixcontact.com/us/products/3270522>



Pick-off plug, nom. voltage: 800 V, nominal current: 24 A, number of positions: 1, connection method: Push-in connection, Rated cross section: 2.5 mm<sup>2</sup>, cross section: 0.14 mm<sup>2</sup>- 4 mm<sup>2</sup>, color: gray

---

## D-PT 4-QUATTRO/2P - End cover

3209277

<https://www.phoenixcontact.com/us/products/3209277>

End cover, depth: 29.1 mm, width: 2.2 mm, height: 92.1 mm, color: gray



## PT 4-QUATTRO/2P-PE - Ground terminal

3211999

<https://www.phoenixcontact.com/us/products/3211999>



## NS 35/ 7,5 PERF 2000MM - DIN rail perforated

0801733

<https://www.phoenixcontact.com/us/products/0801733>



DIN rail perforated, Pack of 25 (50 m), acc. to EN 60715, material: Steel, galvanized, passivated with a thick layer, Standard profile, color: silver

---

## NS 35/ 7,5 UNPERF 2000MM - DIN rail, unperforated

0801681

<https://www.phoenixcontact.com/us/products/0801681>



DIN rail, unperforated, Pack of 25 (50 m), acc. to EN 60715, material: Steel, galvanized, passivated with a thick layer, Standard profile, color: silver

## PT 4-QUATTRO/2P-PE - Ground terminal

3211999

<https://www.phoenixcontact.com/us/products/3211999>



## NS 35/ 7,5 WH PERF 2000MM - DIN rail perforated

1204119

<https://www.phoenixcontact.com/us/products/1204119>



DIN rail perforated, Pack of 25 (50 m), acc. to EN 60715, material: Steel, Galvanized, white passivated, Standard profile, color: silver

---

## NS 35/ 7,5 WH UNPERF 2000MM-VPE 10 - DIN rail, unperforated

1204122

<https://www.phoenixcontact.com/us/products/1204122>



DIN rail, unperforated, Pack of 10 (20 m), acc. to EN 60715, material: Steel, Galvanized, white passivated, Standard profile, color: silver

## PT 4-QUATTRO/2P-PE - Ground terminal

3211999

<https://www.phoenixcontact.com/us/products/3211999>



### NS 35/ 7,5 AL UNPERF 2000MM - DIN rail, unperforated

0801704

<https://www.phoenixcontact.com/us/products/0801704>



DIN rail, unperforated, Pack of 25 (50 m), acc. to EN 60715, material: Aluminum, uncoated, Standard profile, color: silver

---

### NS 35/ 7,5 ZN PERF 2000MM - DIN rail perforated

1206421

<https://www.phoenixcontact.com/us/products/1206421>



DIN rail perforated, Pack of 25 (50 m), acc. to EN 60715, material: Steel, galvanized, Standard profile, color: silver

## PT 4-QUATTRO/2P-PE - Ground terminal

3211999

<https://www.phoenixcontact.com/us/products/3211999>



### NS 35/ 7,5 ZN UNPERF 2000MM - DIN rail, unperforated

1206434

<https://www.phoenixcontact.com/us/products/1206434>



DIN rail, unperforated, Pack of 25 (50 m), acc. to EN 60715, material: Steel, galvanized, Standard profile, color: silver

---

### NS 35/ 7,5 CU UNPERF 2000MM-VPE 10 - DIN rail, unperforated

0801762

<https://www.phoenixcontact.com/us/products/0801762>



DIN rail, unperforated, Pack of 10 (20 m), acc. to EN 60715, material: Copper, uncoated, Standard profile, color: copper-colored



## PT 4-QUATTRO/2P-PE - Ground terminal

3211999

<https://www.phoenixcontact.com/us/products/3211999>



## NS 35/ 7,5 CAP - End cap

1206560

<https://www.phoenixcontact.com/us/products/1206560>

DIN rail end piece, for DIN rail NS 35/7.5



---

## NS 35/15 PERF 2000MM - DIN rail perforated

1201730

<https://www.phoenixcontact.com/us/products/1201730>



DIN rail perforated, Pack of 25 (50 m), similar to EN 60715, material: Steel, galvanized, passivated with a thick layer, Standard profile, color: silver

## PT 4-QUATTRO/2P-PE - Ground terminal

3211999

<https://www.phoenixcontact.com/us/products/3211999>



### NS 35/15 UNPERF 2000MM - DIN rail, unperforated

1201714

<https://www.phoenixcontact.com/us/products/1201714>



DIN rail, unperforated, Pack of 25 (50 m), similar to EN 60715, material: Steel, galvanized, passivated with a thick layer, Standard profile, color: silver

---

### NS 35/15 WH PERF 2000MM - DIN rail perforated

0806602

<https://www.phoenixcontact.com/us/products/0806602>



DIN rail perforated, Pack of 25 (50 m), similar to EN 60715, material: Steel, Galvanized, white passivated, Standard profile, color: white

## PT 4-QUATTRO/2P-PE - Ground terminal

3211999

<https://www.phoenixcontact.com/us/products/3211999>



## NS 35/15 WH UNPERF 2000MM-VPE 10 - DIN rail, unperforated

1204135

<https://www.phoenixcontact.com/us/products/1204135>



DIN rail, unperforated, Pack of 10 (20 m), similar to EN 60715, material: Steel, Galvanized, white passivated, Standard profile, color: silver

---

## NS 35/15 AL UNPERF 2000MM - DIN rail, unperforated

1201756

<https://www.phoenixcontact.com/us/products/1201756>



DIN rail, unperforated, similar to EN 60715, material: Aluminum, uncoated, Standard profile, color: silver

## PT 4-QUATTRO/2P-PE - Ground terminal

3211999

<https://www.phoenixcontact.com/us/products/3211999>



### NS 35/15 ZN PERF 2000MM - DIN rail perforated

1206599

<https://www.phoenixcontact.com/us/products/1206599>



DIN rail perforated, Pack of 25 (50 m), similar to EN 60715, material: Steel, galvanized, Standard profile, color: silver

---

### NS 35/15 ZN UNPERF 2000MM - DIN rail, unperforated

1206586

<https://www.phoenixcontact.com/us/products/1206586>



DIN rail, unperforated, Pack of 25 (50 m), similar to EN 60715, material: Steel, galvanized, Standard profile, color: silver

## PT 4-QUATTRO/2P-PE - Ground terminal

3211999

<https://www.phoenixcontact.com/us/products/3211999>



## NS 35/15 CU UNPERF 2000MM-VPE 10 - DIN rail, unperforated

1201895

<https://www.phoenixcontact.com/us/products/1201895>



DIN rail, unperforated, Pack of 10 (20 m), similar to EN 60715, material: Copper, uncoated, Standard profile, color: copper-colored

---

## NS 35/15 CAP - End cap

1206573

<https://www.phoenixcontact.com/us/products/1206573>



DIN rail end piece, for DIN rail NS 35/15

## PT 4-QUATTRO/2P-PE - Ground terminal

3211999

<https://www.phoenixcontact.com/us/products/3211999>



## NS 35/15-2,3 UNPERF 2000MM-VPE 10 - DIN rail, unperforated

1201798

<https://www.phoenixcontact.com/us/products/1201798>



DIN rail, unperforated, Pack of 10 (20 m), acc. to EN 60715, material: Steel, galvanized, passivated with a thick layer, Standard profile 2.3 mm, color: silver

---

## ZB 6:UNBEDRUCKT - Zack marker strip

1051003

<https://www.phoenixcontact.com/us/products/1051003>



Zack marker strip, Strip, white, unlabeled, can be labeled with: PLOTMARK, CMS-P1-PLOTTER, mounting type: latching, for terminal block width: 6.2 mm, lettering field size: 6.15 x 10.5 mm, Number of individual labels: 10

## PT 4-QUATTRO/2P-PE - Ground terminal

3211999

<https://www.phoenixcontact.com/us/products/3211999>



## ZB 6 CUS - Zack marker strip

0824992

<https://www.phoenixcontact.com/us/products/0824992>



Zack marker strip, can be ordered: Strip, white, labeled according to customer specifications, mounting type: snap into tall marker groove, for terminal block width: 6.2 mm, lettering field size: 6.15 x 10.5 mm, Number of individual labels: 10

---

## ZB 6,LGS:FORTL.ZAHLEN - Zack marker strip

1051016

<https://www.phoenixcontact.com/us/products/1051016>



Zack marker strip, Strip, white, labeled, can be labeled with: CMS-P1-PLOTTER, printed horizontally: consecutive numbers 1 ... 10, 11 ... 20, etc. up to 491 ... 500, mounting type: latching, for terminal block width: 6.2 mm, lettering field size: 6.15 x 10.5 mm, Number of individual labels: 10

## PT 4-QUATTRO/2P-PE - Ground terminal

3211999

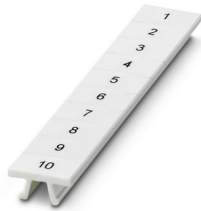
<https://www.phoenixcontact.com/us/products/3211999>



## ZB 6,QR:FORTL.ZAHLEN - Zack marker strip

1051029

<https://www.phoenixcontact.com/us/products/1051029>



Zack marker strip, Strip, white, labeled, can be labeled with: CMS-P1-PLOTTER, Printed vertically: consecutive numbers 1 ... 10, 11 ... 20, etc. up to 491 ... 500, mounting type: latching, for terminal block width: 6.2 mm, lettering field size: 6.15 x 10.5 mm, Number of individual labels: 10

---

## ZB 6,LGS:GLEICHE ZAHLEN - Zack marker strip

1051032

<https://www.phoenixcontact.com/us/products/1051032>



Zack marker strip, Strip, white, labeled, can be labeled with: CMS-P1-PLOTTER, printed horizontally: Identical numbers 1 or 2, etc. up to 100, mounting type: latching, for terminal block width: 6.2 mm, lettering field size: 6.15 x 10.5 mm, Number of individual labels: 10



## PT 4-QUATTRO/2P-PE - Ground terminal

3211999

<https://www.phoenixcontact.com/us/products/3211999>



### ZB 6,LGS:L1-N,PE - Marker for terminal blocks

1051414

<https://www.phoenixcontact.com/us/products/1051414>



Marker for terminal blocks, Strip, white, labeled, can be labeled with: CMS-P1-PLOTTER, horizontal: L1, L2, L3, N, PE, L1, L2, L3, N, PE, mounting type: latching, for terminal block width: 6.2 mm, lettering field size: 6.15 x 10.5 mm, Number of individual labels: 10

---

### ZB 6,LGS:U-N - Marker for terminal blocks

1051430

<https://www.phoenixcontact.com/us/products/1051430>



Marker for terminal blocks, Strip, white, labeled, can be labeled with: CMS-P1-PLOTTER, printed horizontally: U, V, W, N, GND, U, V, W, N, GND, mounting type: latching, for terminal block width: 6.2 mm, lettering field size: 6.15 x 10.5 mm, Number of individual labels: 10

## PT 4-QUATTRO/2P-PE - Ground terminal

3211999

<https://www.phoenixcontact.com/us/products/3211999>



### UC-TM 6 - Marker for terminal blocks

0818085

<https://www.phoenixcontact.com/us/products/0818085>



Marker for terminal blocks, Sheet, white, unlabeled, can be labeled with: BLUEMARK ID COLOR, BLUEMARK ID, BLUEMARK CLED, PLOTMARK, CMS-P1-PLOTTER, mounting type: latching, for terminal block width: 6.2 mm, lettering field size: 5.6 x 10.5 mm, Number of individual labels: 80

---

### UC-TM 6 CUS - Marker for terminal blocks

0824589

<https://www.phoenixcontact.com/us/products/0824589>



Marker for terminal blocks, can be ordered: by sheet, white, labeled according to customer specifications, mounting type: snap into tall marker groove, for terminal block width: 6.2 mm, lettering field size: 5.6 x 10.5 mm, Number of individual labels: 80

## PT 4-QUATTRO/2P-PE - Ground terminal

3211999

<https://www.phoenixcontact.com/us/products/3211999>



### UCT-TM 6 - Marker for terminal blocks

0828736

<https://www.phoenixcontact.com/us/products/0828736>



Marker for terminal blocks, Sheet, white, unlabeled, can be labeled with: TOPMARK NEO, TOPMARK LASER, BLUEMARK ID COLOR, BLUEMARK ID, BLUEMARK CLED, THERMOMARK PRIME, THERMOMARK CARD 2.0, THERMOMARK CARD, mounting type: latching, for terminal block width: 6.2 mm, lettering field size: 5.6 x 10.5 mm, Number of individual labels: 60

---

### UCT-TM 6 CUS - Marker for terminal blocks

0829602

<https://www.phoenixcontact.com/us/products/0829602>



Marker for terminal blocks, can be ordered: by sheet, white, labeled according to customer specifications, mounting type: snap into tall marker groove, for terminal block width: 6.2 mm, lettering field size: 5.6 x 10.5 mm, Number of individual labels: 60

## PT 4-QUATTRO/2P-PE - Ground terminal

3211999

<https://www.phoenixcontact.com/us/products/3211999>



### ZBF 6:UNBEDRUCKT - Zack Marker strip, flat

0808710

<https://www.phoenixcontact.com/us/products/0808710>



Zack Marker strip, flat, Strip, white, unlabeled, can be labeled with: PLOTMARK, CMS-P1-PLOTTER, mounting type: latching, for terminal block width: 6.2 mm, lettering field size: 5.15 x 6.15 mm, Number of individual labels: 10

---

### ZBF 6 CUS - Zack Marker strip, flat

0825027

<https://www.phoenixcontact.com/us/products/0825027>



Zack Marker strip, flat, Strip, can be ordered: Strip, white, labeled according to customer specifications, mounting type: snap into flat marker groove, for terminal block width: 6.2 mm, lettering field size: 5.15 x 6.15 mm, Number of individual labels: 10

## PT 4-QUATTRO/2P-PE - Ground terminal

3211999

<https://www.phoenixcontact.com/us/products/3211999>



### UC-TMF 6 - Marker for terminal blocks

0818140

<https://www.phoenixcontact.com/us/products/0818140>



Marker for terminal blocks, Sheet, white, unlabeled, can be labeled with: BLUEMARK ID COLOR, BLUEMARK ID, BLUEMARK CLED, PLOTMARK, CMS-P1-PLOTTER, mounting type: latching, for terminal block width: 6.2 mm, lettering field size: 5.6 x 5.1 mm, Number of individual labels: 80

---

### UC-TMF 6 CUS - Marker for terminal blocks

0824646

<https://www.phoenixcontact.com/us/products/0824646>



Marker for terminal blocks, can be ordered: by sheet, white, labeled according to customer specifications, mounting type: snap into flat marker groove, for terminal block width: 6.2 mm, lettering field size: 5.6 x 5.1 mm, Number of individual labels: 80

## PT 4-QUATTRO/2P-PE - Ground terminal

3211999

<https://www.phoenixcontact.com/us/products/3211999>



### UCT-TMF 6 - Marker for terminal blocks

0828746

<https://www.phoenixcontact.com/us/products/0828746>



Marker for terminal blocks, Sheet, white, unlabeled, can be labeled with: TOPMARK NEO, TOPMARK LASER, BLUEMARK ID COLOR, BLUEMARK ID, BLUEMARK CLED, THERMOMARK PRIME, THERMOMARK CARD 2.0, THERMOMARK CARD, mounting type: latching, for terminal block width: 6.2 mm, lettering field size: 5.4 x 4.7 mm, Number of individual labels: 60

---

### UCT-TMF 6 CUS - Marker for terminal blocks

0829665

<https://www.phoenixcontact.com/us/products/0829665>



Marker for terminal blocks, can be ordered: by sheet, white, labeled according to customer specifications, mounting type: snap into flat marker groove, for terminal block width: 6.2 mm, lettering field size: 5.4 x 4.7 mm, Number of individual labels: 60

## PT 4-QUATTRO/2P-PE - Ground terminal

3211999

<https://www.phoenixcontact.com/us/products/3211999>



### ZBF 6,LGS:FORTL.ZAHLEN - Zack Marker strip, flat

0808749

<https://www.phoenixcontact.com/us/products/0808749>



Zack Marker strip, flat, Strip, white, labeled, printed horizontally: consecutive numbers 1 ... 10, 11 ... 20, etc. up to 91 ... 100, mounting type: latching, for terminal block width: 6.2 mm, lettering field size: 5.15 x 6.15 mm, Number of individual labels: 10

---

### ZBF 6,QR:FORTL.ZAHLEN - Zack Marker strip, flat

0808765

<https://www.phoenixcontact.com/us/products/0808765>



Zack Marker strip, flat, Strip, white, labeled, Printed vertically: consecutive numbers 1 ... 10, 11 ... 20, etc. up to 91 ... 100, mounting type: latching, for terminal block width: 6.2 mm, lettering field size: 5.15 x 6.15 mm, Number of individual labels: 10

## PT 4-QUATTRO/2P-PE - Ground terminal

3211999

<https://www.phoenixcontact.com/us/products/3211999>



### ZBF 6,LGS:GERADE ZAHLEN - Zack Marker strip, flat

0810834

<https://www.phoenixcontact.com/us/products/0810834>



Zack Marker strip, flat, Strip, white, labeled, printed horizontally: consecutive even numbers 2 ... 20, 22 ... 40, etc. up to 82 ... 100, mounting type: latching, for terminal block width: 6.2 mm, lettering field size: 5.15 x 6.15 mm, Number of individual labels: 10

---

### ZBF 6,LGS:UNGERADE ZAHLEN - Zack Marker strip, flat

0810876

<https://www.phoenixcontact.com/us/products/0810876>



Zack Marker strip, flat, Strip, white, labeled, printed horizontally: Odd numbers 1 - 19, 21 - 39, etc. up to 81 - 99, mounting type: latching, for terminal block width: 6.2 mm, lettering field size: 5.15 x 6.15 mm, Number of individual labels: 10



## PT 4-QUATTRO/2P-PE - Ground terminal

3211999

<https://www.phoenixcontact.com/us/products/3211999>



## MPS-MT - Test plug

0201744

<https://www.phoenixcontact.com/us/products/0201744>



Test plug, with solder connection up to 1 mm<sup>2</sup> conductor cross section, number of positions: 1, color: gray

---

## MPS-IH WH - Insulating sleeve

0201663

<https://www.phoenixcontact.com/us/products/0201663>

Insulating sleeve, color: white



## PT 4-QUATTRO/2P-PE - Ground terminal

3211999

<https://www.phoenixcontact.com/us/products/3211999>



### MPS-IH RD - Insulating sleeve

0201676

<https://www.phoenixcontact.com/us/products/0201676>

Insulating sleeve, color: red



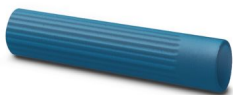
---

### MPS-IH BU - Insulating sleeve

0201689

<https://www.phoenixcontact.com/us/products/0201689>

Insulating sleeve, color: blue



## PT 4-QUATTRO/2P-PE - Ground terminal

3211999

<https://www.phoenixcontact.com/us/products/3211999>



### MPS-IH YE - Insulating sleeve

0201692

<https://www.phoenixcontact.com/us/products/0201692>

Insulating sleeve, color: yellow



---

### MPS-IH GN - Insulating sleeve

0201702

<https://www.phoenixcontact.com/us/products/0201702>

Insulating sleeve, color: green



## PT 4-QUATTRO/2P-PE - Ground terminal

3211999

<https://www.phoenixcontact.com/us/products/3211999>



### MPS-IH GY - Insulating sleeve

0201728

<https://www.phoenixcontact.com/us/products/0201728>

Insulating sleeve, color: gray



---

### MPS-IH BK - Insulating sleeve

0201731

<https://www.phoenixcontact.com/us/products/0201731>

Insulating sleeve, color: black



## PT 4-QUATTRO/2P-PE - Ground terminal

3211999

<https://www.phoenixcontact.com/us/products/3211999>



### ISH 4/0,5 - Insulating sleeve

3002885

<https://www.phoenixcontact.com/us/products/3002885>



Insulating sleeve, color: gray

---

### ISH 4/1,0 - Insulating sleeve

3002898

<https://www.phoenixcontact.com/us/products/3002898>



Insulating sleeve, color: black

## PT 4-QUATTRO/2P-PE - Ground terminal

3211999

<https://www.phoenixcontact.com/us/products/3211999>



### PAI-4-FIX-5/6 BU - Test adapter

3035975

<https://www.phoenixcontact.com/us/products/3035975>



4 mm test adapter, for terminal blocks with 5.2 mm and 6.2 mm pitch

---

### PAI-4-FIX-5/6 OG - Test adapter

3035974

<https://www.phoenixcontact.com/us/products/3035974>



4 mm test adapter, for terminal blocks with 5.2 mm and 6.2 mm pitch

## PT 4-QUATTRO/2P-PE - Ground terminal

3211999

<https://www.phoenixcontact.com/us/products/3211999>



### PAI-4-FIX-5/6 YE - Test adapter

3035977

<https://www.phoenixcontact.com/us/products/3035977>



4 mm test adapter, for terminal blocks with 5.2 mm and 6.2 mm pitch

---

### PAI-4-FIX-5/6 RD - Test adapter

3035976

<https://www.phoenixcontact.com/us/products/3035976>



4 mm test adapter, for terminal blocks with 5.2 mm and 6.2 mm pitch

## PT 4-QUATTRO/2P-PE - Ground terminal

3211999

<https://www.phoenixcontact.com/us/products/3211999>



### PAI-4-FIX-5/6 GN - Test adapter

3035978

<https://www.phoenixcontact.com/us/products/3035978>



4 mm test adapter, for terminal blocks with 5.2 mm and 6.2 mm pitch

---

### PAI-4-FIX-5/6 BK - Test adapter

3035980

<https://www.phoenixcontact.com/us/products/3035980>



4 mm test adapter, for terminal blocks with 5.2 mm and 6.2 mm pitch



## PT 4-QUATTRO/2P-PE - Ground terminal

3211999

<https://www.phoenixcontact.com/us/products/3211999>



## PAI-4-FIX-5/6 GY - Test adapter

3035982

<https://www.phoenixcontact.com/us/products/3035982>



4 mm test adapter, for terminal blocks with 5.2 mm and 6.2 mm pitch

## PAI-4-FIX-5/6 VT - Test adapter

3035979

<https://www.phoenixcontact.com/us/products/3035979>



4 mm test adapter, for terminal blocks with 5.2 mm and 6.2 mm pitch

## PT 4-QUATTRO/2P-PE - Ground terminal

3211999

<https://www.phoenixcontact.com/us/products/3211999>



### PAI-4-FIX-5/6 BN - Test adapter

3035981

<https://www.phoenixcontact.com/us/products/3035981>



4 mm test adapter, for terminal blocks with 5.2 mm and 6.2 mm pitch

---

### PAI-4-FIX-5/6 WH - Test adapter

3035983

<https://www.phoenixcontact.com/us/products/3035983>



4 mm test adapter, for terminal blocks with 5.2 mm and 6.2 mm pitch

## PT 4-QUATTRO/2P-PE - Ground terminal

3211999

<https://www.phoenixcontact.com/us/products/3211999>



### PS-6 - Test plug

3030996

<https://www.phoenixcontact.com/us/products/3030996>



Test plug, Modular test plug, number of positions: 1, color: red

---

### PS-6/2,3MM RD - Test plug

3038736

<https://www.phoenixcontact.com/us/products/3038736>



Test plug, number of positions: 1, color: red

## PT 4-QUATTRO/2P-PE - Ground terminal

3211999

<https://www.phoenixcontact.com/us/products/3211999>



### TMT 6 R - Marker for terminal blocks

0816498

<https://www.phoenixcontact.com/us/products/0816498>



Marker for terminal blocks, Roll, white, unlabeled, can be labeled with: THERMOMARK ROLL 2.0, THERMOMARK ROLL, THERMOMARK ROLL X1, THERMOMARK ROLLMASTER 300/600, THERMOMARK X1.2, THERMOMARK S1.1, perforated, mounting type: latching, snap into flat marker groove, for terminal block width: 6.2 mm, lettering field size: 6.35 x 6.15 mm, Number of individual labels: 16000

---

### TMT 6 R CUS - Marker for terminal blocks

0824488

<https://www.phoenixcontact.com/us/products/0824488>



Marker for terminal blocks, can be ordered: by line, white, labeled according to customer specifications, mounting type: snap into universal marker groove, snap into flat marker groove, for terminal block width: 6.2 mm, lettering field size: 6.35 x 6.15 mm

## PT 4-QUATTRO/2P-PE - Ground terminal

3211999

<https://www.phoenixcontact.com/us/products/3211999>



## TMT (EX9,5)R - Marker for terminal blocks

0828295

<https://www.phoenixcontact.com/us/products/0828295>



Marker for terminal blocks, Roll, white, unlabeled, can be labeled with: THERMOMARK E.300 (D)/600 (D), THERMOMARK ROLL 2.0, THERMOMARK ROLL, THERMOMARK ROLL X1, THERMOMARK ROLLMASTER 300/600, THERMOMARK X1.2, mounting type: latching, snap into tall marker groove, for terminal block width: 30000 mm, lettering field size: 9.5 x 50000 mm, Number of individual labels: 1

---

## US-TM 100 - Marker for terminal blocks

0829255

<https://www.phoenixcontact.com/us/products/0829255>



Marker for terminal blocks, Card, white, unlabeled, can be labeled with: BLUEMARK ID COLOR, BLUEMARK ID, THERMOMARK PRIME, THERMOMARK CARD 2.0, THERMOMARK CARD, mounting type: latching, lettering field size: 104 x 9.8 mm, Number of individual labels: 13

# PT 4-QUATTRO/2P-PE - Ground terminal



3211999

<https://www.phoenixcontact.com/us/products/3211999>

## PP-H 4/ 1 - Plug

3212010

<https://www.phoenixcontact.com/us/products/3212010>



Plug, nom. voltage: 800 V, nominal current: 32 A, number of connections: 1, number of positions: 1, connection method: Push-in connection, 1st level connection left, Rated cross section: 4 mm<sup>2</sup>, cross section: 0.2 mm<sup>2</sup> - 6 mm<sup>2</sup>, mounting type: Plug-in mounting, color: gray

---

## PP-H 4/ 1 BU - Plug

3212077

<https://www.phoenixcontact.com/us/products/3212077>



Plug, nom. voltage: 800 V, nominal current: 32 A, number of connections: 1, number of positions: 1, connection method: Push-in connection, 1st level connection left, Rated cross section: 4 mm<sup>2</sup>, cross section: 0.2 mm<sup>2</sup> - 6 mm<sup>2</sup>, color: blue

# PT 4-QUATTRO/2P-PE - Ground terminal



3211999

<https://www.phoenixcontact.com/us/products/3211999>

## PP-H 4/ 1 GNYE - Plug

3212088

<https://www.phoenixcontact.com/us/products/3212088>



Plug, nom. voltage: 800 V, nominal current: 32 A, number of connections: 1, number of positions: 1, connection method: Push-in connection, 1st level connection left, Rated cross section: 4 mm<sup>2</sup>, cross section: 0.2 mm<sup>2</sup> - 6 mm<sup>2</sup>, color: green-yellow

---

## PP-H 4/ 2 - Plug

3212016

<https://www.phoenixcontact.com/us/products/3212016>



Plug, nom. voltage: 800 V, nominal current: 32 A, number of connections: 2, number of positions: 2, connection method: Push-in connection, 1st level connection left, Rated cross section: 4 mm<sup>2</sup>, cross section: 0.2 mm<sup>2</sup> - 6 mm<sup>2</sup>, color: gray

# PT 4-QUATTRO/2P-PE - Ground terminal



3211999

<https://www.phoenixcontact.com/us/products/3211999>

## PP-H 4/ 3 - Plug

3212022

<https://www.phoenixcontact.com/us/products/3212022>



Plug, nom. voltage: 800 V, nominal current: 32 A, number of connections: 3, number of positions: 3, connection method: Push-in connection, 1st level connection left, Rated cross section: 4 mm<sup>2</sup>, cross section: 0.2 mm<sup>2</sup> - 6 mm<sup>2</sup>, color: gray

---

## PP-H 4/ 4 - Plug

3212029

<https://www.phoenixcontact.com/us/products/3212029>



Plug, nom. voltage: 800 V, nominal current: 32 A, number of connections: 4, number of positions: 4, connection method: Push-in connection, 1st level connection left, Rated cross section: 4 mm<sup>2</sup>, cross section: 0.2 mm<sup>2</sup> - 6 mm<sup>2</sup>, mounting type: Plug-in mounting, color: gray



# PT 4-QUATTRO/2P-PE - Ground terminal



3211999

<https://www.phoenixcontact.com/us/products/3211999>

## PP-H 4/ 5 - Plug

3212035

<https://www.phoenixcontact.com/us/products/3212035>



Plug, nom. voltage: 800 V, nominal current: 32 A, number of connections: 5, number of positions: 5, connection method: Push-in connection, 1st level connection left, Rated cross section: 4 mm<sup>2</sup>, cross section: 0.2 mm<sup>2</sup> - 6 mm<sup>2</sup>, color: gray

---

## PP-H 4/ 6 - Plug

3212041

<https://www.phoenixcontact.com/us/products/3212041>



Plug, nom. voltage: 800 V, nominal current: 32 A, number of connections: 6, number of positions: 6, connection method: Push-in connection, 1st level connection left, Rated cross section: 4 mm<sup>2</sup>, cross section: 0.2 mm<sup>2</sup> - 6 mm<sup>2</sup>, mounting type: Plug-in mounting, color: gray

# PT 4-QUATTRO/2P-PE - Ground terminal



3211999

<https://www.phoenixcontact.com/us/products/3211999>

## PP-H 4/ 7 - Plug

3212048

<https://www.phoenixcontact.com/us/products/3212048>



Plug, nom. voltage: 800 V, nominal current: 32 A, number of connections: 7, number of positions: 7, connection method: Push-in connection, 1st level connection left, Rated cross section: 4 mm<sup>2</sup>, cross section: 0.2 mm<sup>2</sup> - 6 mm<sup>2</sup>, color: gray

---

## PP-H 4/ 8 - Plug

3212054

<https://www.phoenixcontact.com/us/products/3212054>



Plug, nom. voltage: 800 V, nominal current: 32 A, number of connections: 8, number of positions: 8, connection method: Push-in connection, 1st level connection left, Rated cross section: 4 mm<sup>2</sup>, cross section: 0.2 mm<sup>2</sup> - 6 mm<sup>2</sup>, color: gray

# PT 4-QUATTRO/2P-PE - Ground terminal



3211999

<https://www.phoenixcontact.com/us/products/3211999>

## PP-H 4/ 9 - Plug

3212061

<https://www.phoenixcontact.com/us/products/3212061>



Plug, nom. voltage: 800 V, nominal current: 32 A, number of connections: 9, number of positions: 9, connection method: Push-in connection, 1st level connection left, Rated cross section: 4 mm<sup>2</sup>, cross section: 0.2 mm<sup>2</sup> - 6 mm<sup>2</sup>, color: gray

---

## PP-H 4/10 - Plug

3212067

<https://www.phoenixcontact.com/us/products/3212067>



Plug, nom. voltage: 800 V, nominal current: 32 A, number of connections: 10, number of positions: 10, connection method: Push-in connection, 1st level connection left, Rated cross section: 4 mm<sup>2</sup>, cross section: 0.2 mm<sup>2</sup> - 6 mm<sup>2</sup>, color: gray

# PT 4-QUATTRO/2P-PE - Ground terminal



3211999

<https://www.phoenixcontact.com/us/products/3211999>

## PP-H 4/11 - Plug

3212074

<https://www.phoenixcontact.com/us/products/3212074>



Plug, nom. voltage: 800 V, nominal current: 32 A, number of connections: 11, number of positions: 11, connection method: Push-in connection, 1st level connection left, Rated cross section: 4 mm<sup>2</sup>, cross section: 0.2 mm<sup>2</sup> - 6 mm<sup>2</sup>, color: gray

---

## PP-H 4/12 - Plug

3212080

<https://www.phoenixcontact.com/us/products/3212080>



Plug, nom. voltage: 800 V, nominal current: 32 A, number of connections: 12, number of positions: 12, connection method: Push-in connection, 1st level connection left, Rated cross section: 4 mm<sup>2</sup>, cross section: 0.2 mm<sup>2</sup> - 6 mm<sup>2</sup>, color: gray

# PT 4-QUATTRO/2P-PE - Ground terminal



3211999

<https://www.phoenixcontact.com/us/products/3211999>

## PP-H 4/13 - Plug

3212087

<https://www.phoenixcontact.com/us/products/3212087>



Plug, nom. voltage: 800 V, nominal current: 32 A, number of connections: 13, number of positions: 13, connection method: Push-in connection, 1st level connection left, Rated cross section: 4 mm<sup>2</sup>, cross section: 0.2 mm<sup>2</sup> - 6 mm<sup>2</sup>, color: gray

---

## PP-H 4/14 - Plug

3212093

<https://www.phoenixcontact.com/us/products/3212093>



Plug, nom. voltage: 800 V, nominal current: 32 A, number of connections: 14, number of positions: 14, connection method: Push-in connection, 1st level connection left, Rated cross section: 4 mm<sup>2</sup>, cross section: 0.2 mm<sup>2</sup> - 6 mm<sup>2</sup>, color: gray

# PT 4-QUATTRO/2P-PE - Ground terminal



3211999

<https://www.phoenixcontact.com/us/products/3211999>

## PP-H 4/15 - Plug

3212100

<https://www.phoenixcontact.com/us/products/3212100>



Plug, nom. voltage: 800 V, nominal current: 32 A, number of connections: 15, number of positions: 15, connection method: Push-in connection, 1st level connection left, Rated cross section: 4 mm<sup>2</sup>, cross section: 0.2 mm<sup>2</sup> - 6 mm<sup>2</sup>, color: gray

---

## PP-H 4/ 1-L - Plug

3211948

<https://www.phoenixcontact.com/us/products/3211948>



Plug, nom. voltage: 800 V, nominal current: 32 A, number of connections: 1, number of positions: 1, connection method: Push-in connection, 1st level connection left, Rated cross section: 4 mm<sup>2</sup>, cross section: 0.2 mm<sup>2</sup> - 6 mm<sup>2</sup>, color: gray

# PT 4-QUATTRO/2P-PE - Ground terminal



3211999

<https://www.phoenixcontact.com/us/products/3211999>

## PP-H 4/ 1-L BU - Plug

3211951

<https://www.phoenixcontact.com/us/products/3211951>



Plug, nom. voltage: 800 V, nominal current: 32 A, number of connections: 1, number of positions: 1, connection method: Push-in connection, 1st level connection left, Rated cross section: 4 mm<sup>2</sup>, cross section: 0.2 mm<sup>2</sup> - 6 mm<sup>2</sup>, color: blue

---

## PP-H 4/ 1-L GNYE - Plug

3211958

<https://www.phoenixcontact.com/us/products/3211958>



Plug, nom. voltage: 800 V, nominal current: 32 A, number of connections: 1, number of positions: 1, connection method: Push-in connection, 1st level connection left, Rated cross section: 4 mm<sup>2</sup>, cross section: 0.2 mm<sup>2</sup> - 6 mm<sup>2</sup>, color: green-yellow

# PT 4-QUATTRO/2P-PE - Ground terminal



3211999

<https://www.phoenixcontact.com/us/products/3211999>

## PP-H 4/ 1-M - Plug

3211965

<https://www.phoenixcontact.com/us/products/3211965>



Plug, nom. voltage: 800 V, nominal current: 32 A, number of connections: 1, number of positions: 1, connection method: Push-in connection, 1st level connection left, Rated cross section: 4 mm<sup>2</sup>, cross section: 0.2 mm<sup>2</sup> - 6 mm<sup>2</sup>, color: gray

---

## PP-H 4/ 1-M BU - Plug

3211964

<https://www.phoenixcontact.com/us/products/3211964>



Plug, nom. voltage: 800 V, nominal current: 32 A, number of connections: 1, number of positions: 1, connection method: Push-in connection, 1st level connection left, Rated cross section: 4 mm<sup>2</sup>, cross section: 0.2 mm<sup>2</sup> - 6 mm<sup>2</sup>, color: blue



## PT 4-QUATTRO/2P-PE - Ground terminal



3211999

<https://www.phoenixcontact.com/us/products/3211999>

### PP-H 4/ 1-M GNYE - Plug

3211971

<https://www.phoenixcontact.com/us/products/3211971>



Plug, nom. voltage: 800 V, nominal current: 32 A, number of connections: 1, number of positions: 1, connection method: Push-in connection, 1st level connection left, Rated cross section: 4 mm<sup>2</sup>, cross section: 0.2 mm<sup>2</sup> - 6 mm<sup>2</sup>, color: green-yellow

---

### PP-H 4/ 1-M OG - Plug

3211966

<https://www.phoenixcontact.com/us/products/3211966>



Plug, nom. voltage: 800 V, nominal current: 32 A, number of connections: 1, number of positions: 1, connection method: Push-in connection, 1st level connection left, Rated cross section: 4 mm<sup>2</sup>, cross section: 0.2 mm<sup>2</sup> - 6 mm<sup>2</sup>, color: orange

# PT 4-QUATTRO/2P-PE - Ground terminal



3211999

<https://www.phoenixcontact.com/us/products/3211999>

## PP-H 4/ 1-R - Plug

3211977

<https://www.phoenixcontact.com/us/products/3211977>



Plug, nom. voltage: 800 V, nominal current: 32 A, number of connections: 1, number of positions: 1, connection method: Push-in connection, 1st level connection left, Rated cross section: 4 mm<sup>2</sup>, cross section: 0.2 mm<sup>2</sup> - 6 mm<sup>2</sup>, color: gray

---

## PP-H 4/ 1-R BU - Plug

3211980

<https://www.phoenixcontact.com/us/products/3211980>



Plug, nom. voltage: 800 V, nominal current: 32 A, number of connections: 1, number of positions: 1, connection method: Push-in connection, 1st level connection left, Rated cross section: 4 mm<sup>2</sup>, cross section: 0.2 mm<sup>2</sup> - 6 mm<sup>2</sup>, color: blue

## PT 4-QUATTRO/2P-PE - Ground terminal



3211999

<https://www.phoenixcontact.com/us/products/3211999>

### PP-H 4/ 1-R GNYE - Plug

3211987

<https://www.phoenixcontact.com/us/products/3211987>



Plug, nom. voltage: 800 V, nominal current: 32 A, number of connections: 1, number of positions: 1, connection method: Push-in connection, 1st level connection left, Rated cross section: 4 mm<sup>2</sup>, cross section: 0.2 mm<sup>2</sup> - 6 mm<sup>2</sup>, color: green-yellow

---

### PP-H 4/ 1-R OG - Plug

3211981

<https://www.phoenixcontact.com/us/products/3211981>



Plug, nom. voltage: 800 V, nominal current: 32 A, number of connections: 1, number of positions: 1, connection method: Push-in connection, 1st level connection left, Rated cross section: 4 mm<sup>2</sup>, cross section: 0.2 mm<sup>2</sup> - 6 mm<sup>2</sup>, color: orange

## PT 4-QUATTRO/2P-PE - Ground terminal

3211999

<https://www.phoenixcontact.com/us/products/3211999>



## SZF 1-0,6X3,5 - Screwdriver

1204517

<https://www.phoenixcontact.com/us/products/1204517>



Actuation tool, for ST terminal blocks, also suitable for use as a bladed screwdriver, size: 0.6 x 3.5 x 100 mm, 2-component grip, with non-slip grip

---

## ST-BW - Actuation tool

1207608

<https://www.phoenixcontact.com/us/products/1207608>



Actuation tool, for all 2.5 mm<sup>2</sup> - 4.0 mm<sup>2</sup> spring-cages

# PT 4-QUATTRO/2P-PE - Ground terminal

3211999

<https://www.phoenixcontact.com/us/products/3211999>



## PROJECT COMPLETE - Software

1050453

<https://www.phoenixcontact.com/us/products/1050453>



Intuitive planning and marking software for configuring terminal strips and for professional marking of marking materials for terminal blocks, conductors, cables, devices, and systems. The software is available for download

---

Phoenix Contact 2024 © - all rights reserved

<https://www.phoenixcontact.com>

Phoenix Contact USA  
586 Fulling Mill Road  
Middletown, PA 17057, United States  
(+717) 944-1300  
[info@phoenixcon.com](mailto:info@phoenixcon.com)