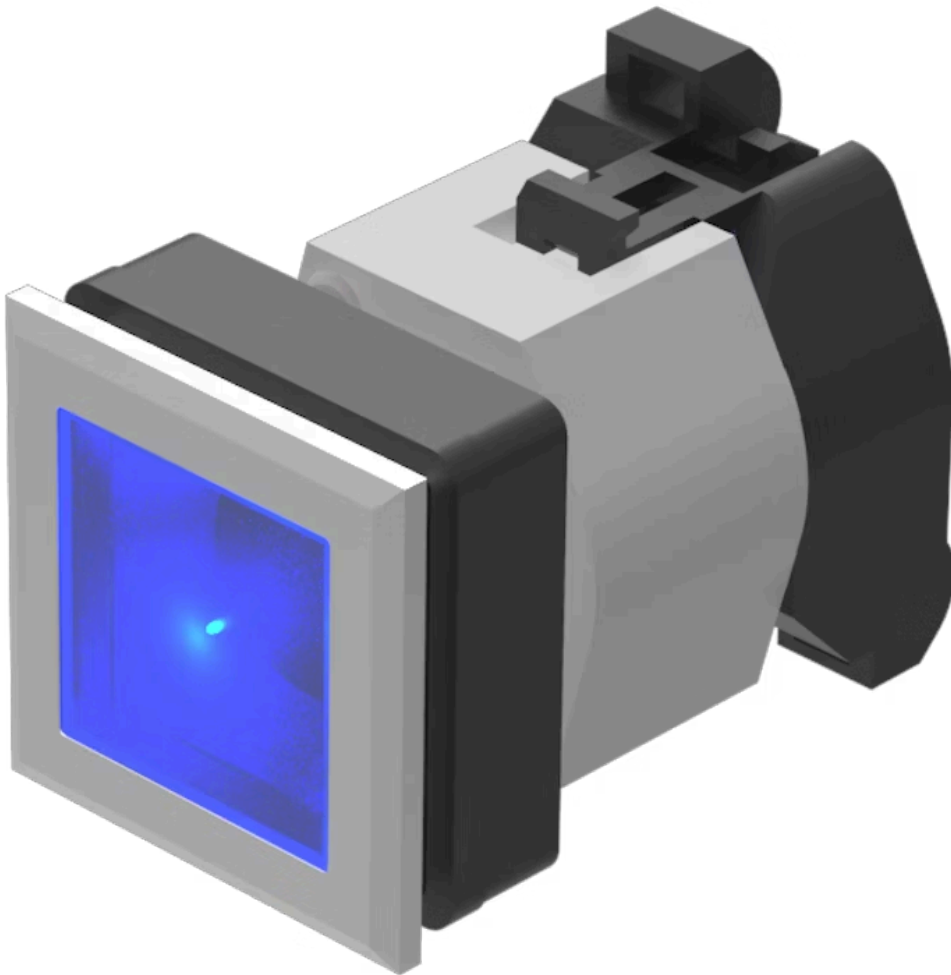


# Actuator

704.260.608

Distribution by  
DigiKey**DigiKey**<https://digikey.eao.com/p/704.260.608>

Your product:

---



## 704.260.608 Actuator

### FRONT

Front form:	square
Front bezel colour:	Silver
Front bezel material:	Plastic
Front dimension:	35 mm x 35 mm

### MOUNTING

Mounting cut-out:	30 mm x 30 mm
Design:	flush

### OPERATING-/INDICATION PART

Lens colour:	Blue
Lens shape:	flush
Lens illumination:	illuminative
Lens material:	Plastic
Lens optics:	transparent

### ELECTRICAL CHARACTERISTICS

Standards:	The switches comply with the "Standards for low-voltage switching devices" DIN EN 60947-1
------------	---

### MECHANICAL CHARACTERISTIC

Terminal:	Screw terminal
Switching action:	Maintained

<b>Operating force:</b>	6.2 N
<b>Weight:</b>	0.051 kg
<b>Mechanical lifetime:</b>	≤3 Mio. cycles of operation
<b>Operating Travel:</b>	ca. 5.8 mm ± 0.2 mm

## AMBIENT CONDITION

<b>Operating temperature:</b>	– 40 °C ... + 55 °C
<b>IP Protection:</b>	IP65 front side
<b>Storage temperature:</b>	– 40 °C ... + 85 °C

## OTHER

<b>max. number of switching elements:</b>	3
---	---

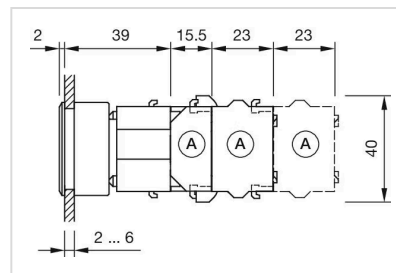
**Hints:** Max. 3 switching elements can be clipped on, The lamp block will be delivered with screw terminal

**Housing colour:** Black

**Housing material:** Plastic

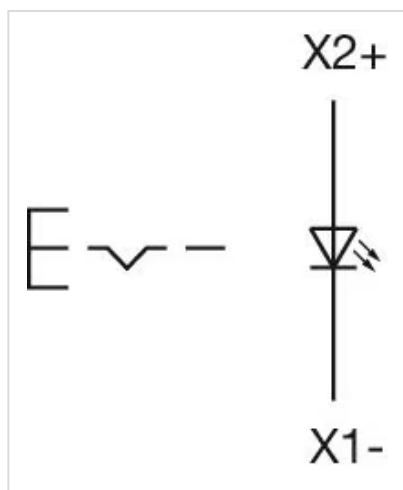
**Short Description:** Actuator, 30 mm x 30 mm, 35 mm x 35 mm, flush, illuminative, Blue, Plastic, transparent, square, Silver, Plastic, Maintained, Screw terminal

## Dimension drawings:

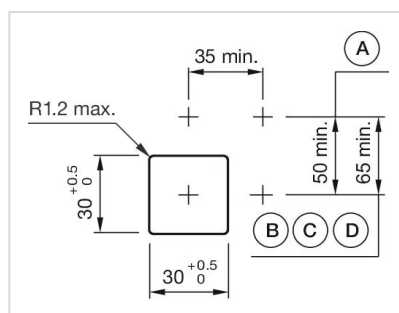


A = Screw terminal

## Wiring diagrams:



**Mounting cut-outs:**



A = Screw terminal  
 B = Push-in terminal (PIT)  
 C = Plug-in terminal 6.3 mm x 0.8 mm  
 D = Double plug-in terminal 6.3 mm x 0.8 mm