

# Actuator

14-  
746.0292

Distribution by  
DigiKey

**DigiKey**



<https://digikey.eao.com/p/14-746.0292>

Your product:

---



## 14-746.0292

### Actuator

#### OPERATING-/INDICATION PART

**Lens illumination:** illuminative

#### ELECTRICAL CHARACTERISTICS

**Standards:** According to EN/IEC 61058-1

**Electrical lifetime:** 50 000 cycles of operation

**Electric strength:** 3000 VAC, 50 Hz, 1 min. between all terminals and earth, according to EN/IEC 61058-1

**Thermal current I<sub>th</sub>:** The maximum current in continuous operation and at ambient temperature not exceeding the quoted maximum values.  
3 A

**Protection class:** II

**Rated Operational Voltage U<sub>e</sub>:** 250 VAC/DC according to EN IEC 61058-1

**Switching voltage and switching current:**

- 250 VAC, 5 A (ohmic)
- 250 VAC, 3 A (Soldering terminal)
- 250 VAC, 2 A (inductive, cos(φ) = 0.7)
- 220 VDC, 0.1 A (inductive, L:R = 30 ms)
- 110 VDC, 0.2 A (inductive, L:R = 30 ms)
- 60 VDC, 0.7 A (inductive, L:R = 30 ms)
- 24 VDC, 2 A (inductive, L:R = 30 ms)

**Contacts:** 2 NC / 2 NO

#### MECHANICAL CHARACTERISTIC

**Terminal:** Universal terminal, 2 x 0.5 mm

**Operating Travel:** 3 mm

**Contact material:** Gold

**Operating force:** 3 N ... 6 N

**Tightening torque:** Fixing nut max. 0.25 Nm

<b>Switching action:</b>	Momentary
<b>Switching system:</b>	Snap-action switching element
<b>Switching system:</b>	Self-cleaning, double-break snap action switching system, 1 normally closed and 1 normally open contact per element.
<b>Weight:</b>	0.016 kg
<b>Mechanical lifetime:</b>	2 Mio. cycles of operation

## AMBIENT CONDITION

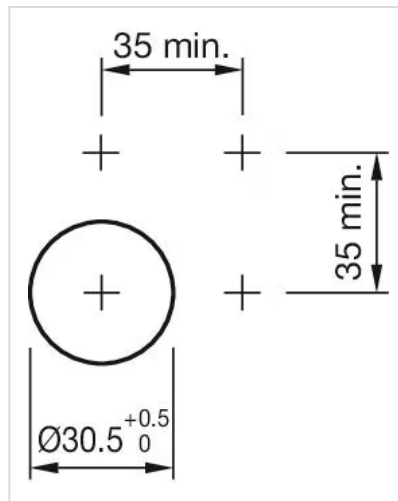
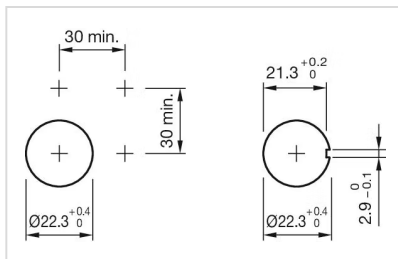
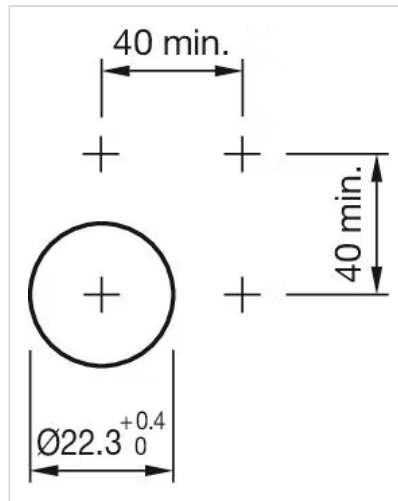
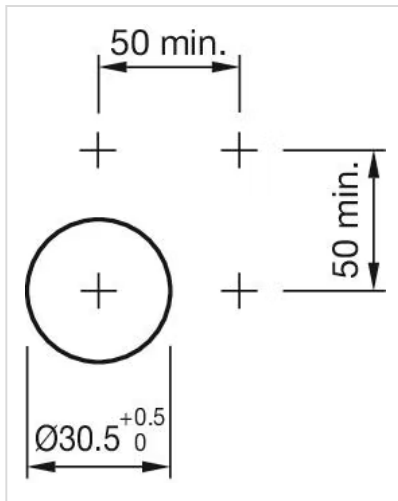
<b>Climate resistance:</b>	Standard condition, as per DIN EN 60068-2-78 Standard cyclic, as per DIN IEC 60068-2-30
<b>Vibration resistance:</b>	Max. 100 m / s <sup>2</sup> from 10 Hz ... 500 Hz, (sinusoidal EN IEC 60068-2-6)
<b>Storage temperature:</b>	– 40 °C ... + 85 °C
<b>Shock resistance:</b>	Max. 150 m / s <sup>2</sup> , pulse width 11 ms, 3-axis, (semi-sinusoidal as per EN IEC 60068-2-27)
<b>Operating temperature:</b>	– 25 °C ... + 55 °C, mounted as a block, make sure the heat can escape freely
<b>IP front protection:</b>	IP67, according to DIN EN 60529

## CERTIFICATE

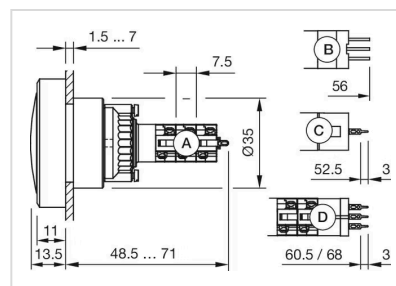
<b>Approbations:</b>	CB (IEC 61058-1), CQC, CSA, DNV, EAC, ENEC (EN 61058-1), UL, VDE
<b>Conformities:</b>	CE, UKCA, 2011 / 65 / EC (RoHS), 2014 / 35 / EU (LVD)

## OTHER

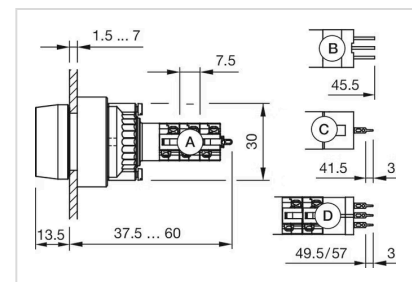
<b>Housing colour:</b>	Black
<b>max. number of switching elements:</b>	1
<b>Short Description:</b>	Actuator, illuminative, 2 NC / 2 NO, Momentary, Universal terminal, 2 x 0.5 mm, IP67, according to DIN EN 60529
<b>Mounting cut-outs:</b>	



#### Dimension drawings:



A = Solder terminal  
B = Plug-in terminal 2.8 x 0.5 mm  
C = Universal terminal 2.0 mm x 0.5 mm  
D = Universal-Solder terminal



A = Solder terminal  
B = Plug-in terminal 2.8 x 0.5 mm  
C = Universal terminal 2.0 mm x 0.5 mm  
D = Universal-Solder terminal

