

HC-D25-SMLD-57/O2PG16 - Housing



1416391

<https://www.phoenixcontact.com/us/products/1416391>

Please be informed that the data shown in this PDF document is generated from our online catalog. Please find the complete data in the user documentation. Our general terms of use for downloads are valid.



Box mounting bases D25, with single locking latch, material: die-cast aluminum, protective cover material: PA, cable outlets: 2, 2x Pg16, height: 57 mm, cable gland: none, protective cover: yes

Commercial data

Item number	1416391
Packing unit	10 pc
Minimum order quantity	1 pc
Product key	BF7AAE
Catalog page	Page 509 (C-4-2015)
GTIN	4055626072524
Weight per piece (including packing)	279.46 g
Weight per piece (excluding packing)	279.46 g
Country of origin	DE

HC-D25-SMLD-57/O2PG16 - Housing



1416391

<https://www.phoenixcontact.com/us/products/1416391>

Technical data

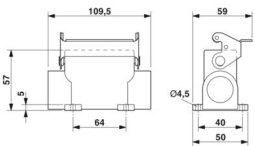
Notes

General	For contact inserts HC-D25, A16
---------	---------------------------------

Product properties

Product type	Housing with locking latch
Housing type	Box mounting bases
Type	D25
No. of cable outlets	2
Type of the screw connection	2x Pg16
Protective cover	yes
Pg screw connection	none

Dimensions

Dimensional drawing	
Width	50 mm
Height	57 mm
Length	109.5 mm

Material specifications

Housing material	die-cast aluminum
Housing surface material	Powder-coated, gray
Material, protective cover	PA
Locking latch material	Steel, galvanized

Mechanical properties

Mechanical data

Type of the screw connection	2x Pg16
Locking type	Latch

Environmental and real-life conditions

Ambient conditions

Degree of protection	IP65 (When plugged in) IP54 (with closed protective cover)
Ambient temperature (operation)	-40 °C ... 125 °C

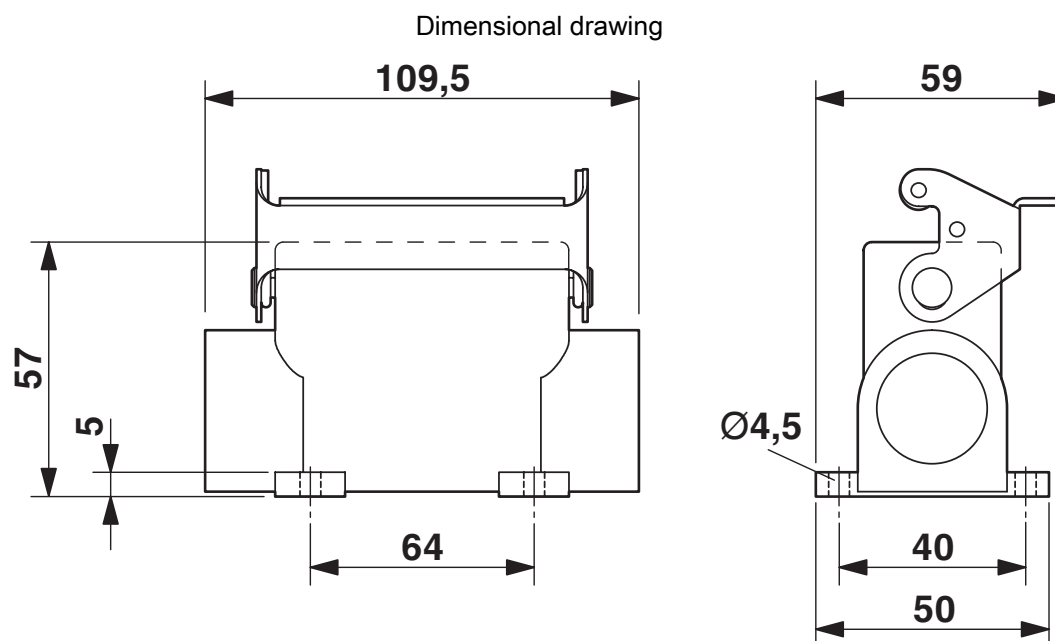
HC-D25-SMLD-57/O2PG16 - Housing

1416391

<https://www.phoenixcontact.com/us/products/1416391>



Drawings



Dimensional drawing

HC-D25-SMLD-57/O2PG16 - Housing

1416391

<https://www.phoenixcontact.com/us/products/1416391>



Classifications

ECLASS

ECLASS-11.0	27440202
ECLASS-13.0	27440202

Environmental product compliance

EU RoHS	
Fulfills EU RoHS substance requirements	Yes, No exemptions
China RoHS	
Environment friendly use period (EFUP)	EFUP-E
	No hazardous substances above the limits
EU REACH SVHC	
REACH candidate substance (CAS No.)	No substance above 0.1 wt%

HC-D25-SMLD-57/O2PG16 - Housing



1416391

<https://www.phoenixcontact.com/us/products/1416391>

Accessories

G-INS-PG16-S68N-PNES-GY - Cable gland

1411144

<https://www.phoenixcontact.com/us/products/1411144>



Cable gland, material for screw connection: PA, application: Standard, external cable diameter 10 mm ... 14 mm, shielding: no, connecting thread: Pg16, color: silver-grey RAL 7001

G-INS-PG16-S68N-NNES-S - Cable gland

1411174

<https://www.phoenixcontact.com/us/products/1411174>



Cable gland, material for screw connection: Brass, nickel-plated, application: Standard, external cable diameter 10 mm ... 14 mm, shielding: no, connecting thread: Pg16, color: silver, with O-ring

HC-D25-SMLD-57/O2PG16 - Housing

1416391

<https://www.phoenixcontact.com/us/products/1416391>



G-INSEC-PG16-S68N-NNES-S - Cable gland

1411199

<https://www.phoenixcontact.com/us/products/1411199>



Cable gland, material for screw connection: Brass, nickel-plated, application: EMC, external cable diameter 10 mm ... 14 mm, shielding: yes, connecting thread: Pg16, color: silver, with O-ring

HC-BS-PG16 - Screw plug

1674516

<https://www.phoenixcontact.com/us/products/1674516>



Screw plug, material for screw connection: Brass, nickel-plated, connecting thread: Pg16, color: silver

Phoenix Contact 2024 © - all rights reserved
<https://www.phoenixcontact.com>

Phoenix Contact USA
586 Fulling Mill Road
Middletown, PA 17057, United States
(+717) 944-1300
info@phoenixcon.com