



Heat Shrink Tubing > Single Heavy Wall RW 200 E: Heat Shrink Tubing, 2:1 Shrink Ratio



Primary Product Color: **Black**

Wall Type: **Single Wall**

Expanded Inside Diameter (Min): **19.05 mm [ .75 in ]**

Recovered Inside Diameter (Max): **9.5 mm [.375 in ]**

Shrink Ratio: **2:1**

[All Single Heavy Wall RW 200 E: Heat Shrink Tubing, 2:1 Shrink Ratio \(12\)](#)

Features

Product Type Features

Wall Type	Single Wall
-----------	-------------

Body Features

Material Systems Code	200
Fluid Type	Aviation Fuel, Hydraulic Fluid, Lubricating Oil, Water
Primary Product Color	Black
Shrink Ratio	2:1
Primary Product Material	Crosslinked Fluoroelastomer
Flexibility	Flexible

Dimensions

Recovered Wall Thickness (Nominal)	1.7 mm[.067 in]
Expanded Inside Diameter (Min)	19.05 mm[.75 in]
Recovered Inside Diameter (Max)	9.5 mm[.375 in]
Tubing Size Range	9.5 – 19.05 mm[.375 – .75 in]

Usage Conditions

Shrink Temperature (Min)	175 °C
Tubing Flammability Type	Flame-Retardant



Operating Temperature Range	-40 – 200 °C
Recovery Temperature	175 °C

Operation/Application

Mechanical Resistance	Fluids
-----------------------	--------

Packaging Features

Packaging Method	Piece
------------------	-------

Other

Meets Low Outgassing Requirements	No
Product Source	UK

Product Compliance

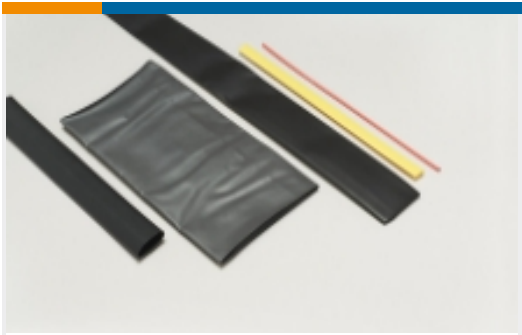
For compliance documentation, visit the product page on TE.com>

EU RoHS Directive 2011/65/EU	Compliant
EU ELV Directive 2000/53/EC	Compliant
China RoHS 2 Directive MIIT Order No 32, 2016	No Restricted Materials Above Threshold
EU REACH Regulation (EC) No. 1907/2006	Current ECHA Candidate List: JUNE 2024 (241) Candidate List Declared Against: JUNE 2024 (241) Does not contain REACH SVHC
Halogen Content	Low Bromine/Chlorine - Br and Cl < 900 ppm per homogenous material. Also BFR /CFR/PVC Free
Solder Process Capability	Not applicable for solder process capability

Product Compliance Disclaimer

This information is provided based on reasonable inquiry of our suppliers and represents our current actual knowledge based on the information they provided. This information is subject to change. The part numbers that TE has identified as EU RoHS compliant have a maximum concentration of 0.1% by weight in homogenous materials for lead, hexavalent chromium, mercury, PBB, PBDE, DBP, BBP, DEHP, DIBP, and 0.01% for cadmium, or qualify for an exemption to these limits as defined in the Annexes of Directive 2011/65/EU (RoHS2). Finished electrical and electronic equipment products will be CE marked as required by Directive 2011/65/EU. Components may not be CE marked. Additionally, the part numbers that TE has identified as EU ELV compliant have a maximum concentration of 0.1% by weight in homogenous materials for lead, hexavalent chromium, and mercury, and 0.01% for cadmium, or qualify for an exemption to these limits as defined in the Annexes of Directive 2000/53/EC (ELV). Regarding the REACH Regulation, the information TE provides on SVHC in articles for this part number is based on the latest European Chemicals Agency (ECHA) 'Guidance on requirements for substances in articles' posted at this URL: <https://echa.europa.eu/guidance-documents/guidance-on-reach>

Also in the Series | RAYCHEM RW-200



Heat Shrink Tubing(24)

Customers Also Bought



TE Part #2071568-2  
ECP150BHBADA



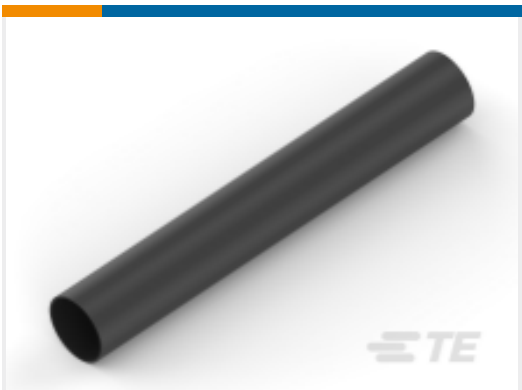
TE Part #2278598-1  
12POS MOS REC



TE Part #4-968972-1  
MCP2,8 GEH ASSY 12P



TE Part #HD16-9-96SE  
PLG, 9P, GRY, E, THRD, 16



TE Part #NB10056001  
ATUM-24/6-0-50MM



TE Part #1456987-1  
2x4 Fem unsealed LP assy Key A



TE Part #2359943-2  
96POS,MCON-1.2 CB,REC HSG,ASSY



TE Part #444156-4  
.250 FASTON REC.



TE Part #8-1564284-5  
96POS,MCON-1.2 CB,REC HSG,ASSY



TE Part #5-2297790-2  
2POS,HPF 1.2,REC HSG,ASSY,SLD

Documents

Product Drawings

RW-200-E-3/4-0-SP

English

Datasheets & Catalog Pages

1654025\_Sec3\_RW-200\_RW-200E

English

raychem-tubing-product-selection-guide

English



Product Specifications

Raychem Fluoroelastomer Tubing Flexible, Fluid Resistant, Heat-Shrinkable

English