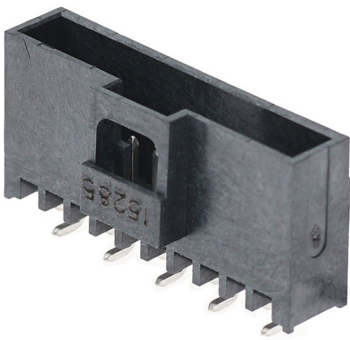




**Part Number :** [1510620455](#)  
**Product Description :** 2.00mm Pitch, Milli-Grid PCB Header, Single Row, Vertical, Surface Mount, 2.50µm Tin (Sn) Plating, with Peg, with Pick and Place Cap, 5 Circuits, Tape and Reel  
**Series Number :** 151062  
**Status :** Active  
**Product Category :** PCB Headers and Receptacles



## Documents & Resources

- Drawings**  
[Drawing 1510620455\\_sd.pdf](#)  
[Packaging Design Drawing PK-151062-0001-001.pdf](#)  
[Packaging Design Drawing PK-151062-0002-001.pdf](#)

- 3D Models and Design Files**  
[3D Model 1510620455\\_stp.zip](#)

- Specifications**  
[Application Specification 503940001-AS-000.pdf](#)  
[Product Specification PS-151062-0001-001.pdf](#)

## Product Environment Compliance

### Compliance

GADSL/IMDS	Not Relevant
China RoHS	
EU ELV	Not Relevant
Low-Halogen Status	Low-Halogen per IEC 61249-2-21
REACH SVHC	Not Contained per D(2024)4144-DC (27 June 2024)
EU RoHS	Compliant per EU 2015/863

- Multiple Part Product Compliance Statements
- Eu RoHS
  - REACH SVHC
  - Low-Halogen

## Multiple Part Industry Compliance Documents

- IPC 1752A Class C
- IPC 1752A Class D
- Molex Product Compliance Declaration
- IEC-62474
- chemSHERPA (xml)

## EU RoHS Certificate of Compliance

---

### Part Details

#### General

Status	Active
Category	PCB Headers and Receptacles
Series	151062
Description	2.00mm Pitch, Milli-Grid PCB Header, Single Row, Vertical, Surface Mount, 2.50µm Tin (Sn) Plating, with Peg, with Pick and Place Cap, 5 Circuits, Tape and Reel
Application	Signal, Wire-to-Board
Comments	See Product Specification for maximum current rating by wire AWG
Component Type	PCB Header
Product Family	Milli-Grid Connector System
Product Name	Milli-Grid
UPC	191128137157

#### Agency

CSA	LR19980
UL	E29179

#### Electrical

Current - Maximum per Contact	2.5A
Voltage - Maximum	125V AC

#### Physical

Breakaway	No
Circuits (Loaded)	5

Circuits (maximum)	5
Color - Resin	Black
Durability (mating cycles max)	25
First Mate / Last Break	No
Flammability	94V-0
Glow-Wire Capable	No
Guide to Mating Part	No
Keying to Mating Part	None
Lock to Mating Part	Yes
Material - Metal	Copper Alloy
Material - Plating Mating	Tin
Material - Plating Termination	Tin
Material - Resin	Liquid Crystal Polymer
Net Weight	0.559/g
Number of Rows	1
Orientation	Vertical
Packaging Type	Embossed Tape on Reel
PCB Locator	Yes
PCB Retention	Yes
Pitch - Mating Interface	2.00mm
Pitch - Termination Interface	2.00mm
Plating min - Mating	2.500µm
Plating min - Termination	2.000µm
Polarized to Mating Part	Yes
Polarized to PCB	Yes
Robotic Placement	Pick and Place Cap
Shrouded	Yes
Stackable	No
Temperature Range - Operating	-40° to +70°C
Termination Interface Style	Surface Mount

## Solder Process Data

Max-Duration	5
Lead-Free Process Capability	REFLOW
Max-Cycle	1

Max-Temp	260
----------	-----

---

Mates With / Use With

Mates with Part(s)

Description	Part Number
Milli-Grid Single Row Receptacle Housings	<u>151100</u>