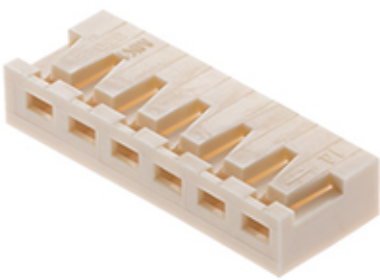




Part Number : [350220015](#)
Product Description : 2.50mm Pitch, Board-In Crimp Housing, Right-Angle and Vertical, 15 Circuits, Natural
Series Number : 35022
Status : Active
Product Category : Connector Housings



Documents & Resources


Drawings
[Drawing 350220015_sd.pdf](#)

3D Models and Design Files
[3D Model 350220015_stp.zip](#)

Specifications
[Packaging Specification PK-35022-001-001.pdf](#)
[Product Specification PS-35021-001-001.pdf](#)
[Product Specification PS-35022-003-001.pdf](#)

Product Environment Compliance

Compliance

GADSL/IMDS	Not Relevant
China RoHS	
EU ELV	Compliant per 2000/53/EC
Low-Halogen Status	Low-Halogen per IEC 61249-2-21
REACH SVHC	Not Contained per D(2024)4144-DC (27 June 2024)
EU RoHS	Compliant per EU 2015/863

[Multiple Part Product Compliance Statements](#)
- Eu RoHS
- REACH SVHC
- Low-Halogen

[Multiple Part Industry Compliance Documents](#)
- IPC 1752A Class C

- IPC 1752A Class D
- Molex Product Compliance Declaration
- IEC-62474
- chemSHERPA (xml)

EU RoHS Certificate of Compliance

Part Details

General

Status	Active
Category	Connector Housings
Series	35022
Description	2.50mm Pitch, Board-In Crimp Housing, Right-Angle and Vertical, 15 Circuits, Natural
Application	Signal
Product Family	Board-in Connectors
Product Name	Board-in
UPC	800753576971

Agency

CSA	LR19980
UL	E29179

Physical

Circuits (maximum)	15
Color - Resin	Natural
Flammability	94V-0
Gender	N/A
Glow-Wire Capable	No
Lock to Mating Part	None
Material - Resin	Nylon
Net Weight	0.380/g
Number of Rows	1
Packaging Type	Bag
Panel Mount	No
Pitch - Mating Interface	2.50mm

Stackable	No
Temperature Range - Operating	-40° to +105°C

Solder Process Data

Lead-Free Process Capability	N/A
------------------------------	-----

Use with Part(s)

Description	Part Number
2.50mm Pitch, Board-in Male Crimp Terminal, Right-Angle, Brass Tin (Sn) Plating, 22-28 AWG, Reel	<u>350211001</u>
2.50mm Pitch, Board-in Male Crimp Terminal, Right-Angle, Tin (Sn) Plating, 22-28 AWG, Reel	<u>350211160</u>