

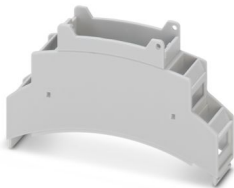
BC 17,8 OTU MKDSO KMGY - Upper housing part



2279732

<https://www.phoenixcontact.com/us/products/2279732>

Please be informed that the data shown in this PDF document is generated from our online catalog. Please find the complete data in the user documentation. Our general terms of use for downloads are valid.



DIN rail housing for use in distribution boards in accordance with DIN 43880, Upper housing part for PCB terminal blocks with screw connection, width: 17.8 mm, height: 89.7 mm, depth: 53.4 mm, color: light grey (similar RAL 7035)

Your advantages

- Coordinated housing and connection system for faster device development
- Individual online configuration for diverse applications in building automation
- Variety of connection technology
- Can be mounted on the DIN rail or the wall
- With DIN-rail-mountable bus connector and power connector system as an option
- Tool-free mounting
- Available in overall widths from one to nine HP (17.8 mm ... 161.6 mm)
- Compliant with DIN EN 43880

Commercial data

Item number	2279732
Packing unit	10 pc
Minimum order quantity	10 pc
Sales key	AC10
Product key	ACHBAB
Catalog page	Page 698 (C-1-2013)
GTIN	4046356328982
Weight per piece (including packing)	14.14 g
Weight per piece (excluding packing)	14.14 g
Customs tariff number	84879090
Country of origin	DE

BC 17,8 OTU MKDSO KMGY - Upper housing part



2279732

<https://www.phoenixcontact.com/us/products/2279732>

Technical data

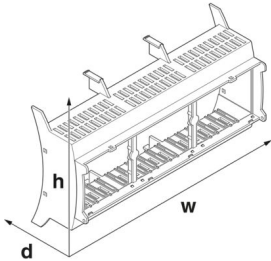
Notes

Assembly note	Refer to the data sheet for the range in the download area.
---------------	---

Product properties

Product type	Upper housing part
Housing type	DIN rail housing for use in distribution boards in accordance with DIN 43880
Housing series	BC
Product family	BC 17,8..
Max. number of positions	16 (pitch: 3.5 mm) 12 (pitch: 5 mm)
Type	Upper housing part for PCB terminal blocks with screw connection
Ventilation openings present	no

Dimensions

Dimensional drawing	
Width	17.8 mm
Height	89.7 mm
Depth	53.4 mm

PCB design

PCB thickness	1.4 mm ... 1.5 mm
---------------	-------------------

Material specifications

Color (Housing)	light grey (RAL 7035)
Flammability rating according to UL 94	V0
Housing material	Polycarbonate
Surface characteristics	untreated

Environmental and real-life conditions

Vibration test

Specification	IEC 60068-2-6:2007-12
Frequency	10 - 150 - 10 Hz
Sweep speed	1 octave/min

BC 17,8 OTU MKDSO KMGY - Upper housing part



2279732

<https://www.phoenixcontact.com/us/products/2279732>

Amplitude	0.15 mm (10 Hz ... 58.1 Hz)
Acceleration	2g (58.1 Hz ... 150 Hz)
Test duration per axis	2.5 h
Test directions	X-, Y- and Z-axis

Glow-wire test

Specification	IEC 60695-2-11:2014-02
Temperature	850 °C
Time of exposure	30 s

Mechanical strength / tumbling barrel

Specification	IEC 60068-2-31:2008-05
Height of fall	50 cm
Frequency	50

Shocks

Specification	IEC 60068-2-27:2008-02
Pulse shape	Half-sine
Acceleration	15g
Shock duration	11 ms
Number of shocks per direction	3
Test directions	X-, Y- and Z-axis (pos. and neg.)

Degree of protection (IP code)

Specification	IEC 60529:1989-11 + AMD 1:1999-11 + AMD 2:2013-08
---------------	---

Ambient conditions

Max. IP code to attain	IP20
Ambient temperature (operation)	-40 °C ... 105 °C (depending on power dissipation)
Ambient temperature (storage/transport)	-40 °C ... 70 °C
Ambient temperature (assembly)	-5 °C ... 100 °C
Relative humidity (storage/transport)	95 %

PCB data

Number of PCB holders	2
Type of PCB mount	Latching
Thickness of the PCB	1.4 mm ... 1.5 mm

Mounting

Mounting type	Snap in
Mounting position	Vertical (horizontal DIN rail)

Packaging specifications

Type of packaging	packed in cardboard
Outer packaging type	Carton

BC 17,8 OTU MKDSO KMGY - Upper housing part

2279732

<https://www.phoenixcontact.com/us/products/2279732>



Drawings

Dimensional drawing



Schematic figure for illustrating the item dimensions. The figure is not of the desired product. For further details, refer to the product drawings in the "Downloads" tab.

BC 17,8 OTU MKDSO KMGY - Upper housing part



2279732

<https://www.phoenixcontact.com/us/products/2279732>

Approvals

🔗 To download certificates, visit the product detail page: <https://www.phoenixcontact.com/us/products/2279732>



UL Recognized

Approval ID: FILE E 240868

BC 17,8 OTU MKDSO KMGY - Upper housing part



2279732

<https://www.phoenixcontact.com/us/products/2279732>

Classifications

ECLASS

ECLASS-11.0	27182702
ECLASS-13.0	27190603

ETIM

ETIM 9.0	EC001031
----------	----------

UNSPSC

UNSPSC 21.0	31261500
-------------	----------

Environmental product compliance

EU RoHS	
Fulfills EU RoHS substance requirements	Yes, No exemptions
China RoHS	
Environment friendly use period (EFUP)	EFUP-E
	No hazardous substances above the limits
EU REACH SVHC	
REACH candidate substance (CAS No.)	No substance above 0.1 wt%

2279732

<https://www.phoenixcontact.com/us/products/2279732>

Mandatory accessories

MKDSO 2,5/ 3-L KMGY - PCB terminal block

2854102

<https://www.phoenixcontact.com/us/products/2854102>



PCB terminal block, nominal current: 24 A, rated voltage (III/2): 400 V, nominal cross section: 2.5 mm², number of potentials: 3, number of rows: 1, number of positions per row: 3, product range: MKDSO 2,5/..-L, pitch: 5 mm, connection method: Screw connection with tension sleeve, mounting: Wave soldering, conductor/PCB connection direction: 0 °, color: light grey, Pin layout: Linear pinning, Solder pin [P]: 3.5 mm, number of solder pins per potential: 1, type of packaging: packed in cardboard. Product with pin output on left side

MKDSO 2,5/ 3-R KMGY - PCB terminal block

2854092

<https://www.phoenixcontact.com/us/products/2854092>



PCB terminal block, nominal current: 24 A, rated voltage (III/2): 400 V, nominal cross section: 2.5 mm², number of potentials: 3, number of rows: 1, number of positions per row: 3, product range: MKDSO 2,5/..-R, pitch: 5 mm, connection method: Screw connection with tension sleeve, mounting: Wave soldering, conductor/PCB connection direction: 0 °, color: light grey, Pin layout: Linear pinning, Solder pin [P]: 3.5 mm, number of solder pins per potential: 1, type of packaging: packed in cardboard. Product with pin output on right side

BC 17,8 OTU MKDSO KMGY - Upper housing part



2279732

<https://www.phoenixcontact.com/us/products/2279732>

MKDSO 1,5/ 4-L-3,5 KMGY - PCB terminal block

2278432

<https://www.phoenixcontact.com/us/products/2278432>



PCB terminal block, nominal current: 8 A, rated voltage (III/2): 160 V, nominal cross section: 1.5 mm², number of potentials: 4, number of rows: 1, number of positions per row: 4, product range: MKDSO 1,5/...-L, pitch: 3.5 mm, connection method: Screw connection with tension sleeve, mounting: Wave soldering, conductor/PCB connection direction: 0 °, color: light grey, Pin layout: Linear pinning, Solder pin [P]: 3 mm, number of solder pins per potential: 1, type of packaging: packed in cardboard. Product with pin output on left side

MKDSO 1,5/ 4-R-3,5 KMGY - PCB terminal block

2278429

<https://www.phoenixcontact.com/us/products/2278429>



PCB terminal block, nominal current: 8 A, rated voltage (III/2): 160 V, nominal cross section: 1.5 mm², number of potentials: 4, number of rows: 1, number of positions per row: 4, product range: MKDSO 1,5/...-R, pitch: 3.5 mm, connection method: Screw connection with tension sleeve, mounting: Wave soldering, conductor/PCB connection direction: 0 °, color: light grey, Pin layout: Linear pinning, Solder pin [P]: 3 mm, number of solder pins per potential: 1, type of packaging: packed in cardboard. Product with pin output on right side

BC 17,8 OTU MKDSO KMGY - Upper housing part

2279732

<https://www.phoenixcontact.com/us/products/2279732>



BC 17,8 DKL R KMGY - Housing cover

2896144

<https://www.phoenixcontact.com/us/products/2896144>

DIN rail housing for use in distribution boards in accordance with DIN 43880, Latching cover (non-detachable), width: 17.8 mm, height: 45 mm, depth: 8 mm, color: light grey (similar RAL 7035)



BC 17,8 DKL S TRANS - Housing cover

2896102

<https://www.phoenixcontact.com/us/products/2896102>

DIN rail housing for use in distribution boards in accordance with DIN 43880, transparent hinged cover, can be sealed, including insertion plate, width: 17.8 mm, height: 45 mm, depth: 8 mm, color: light grey (similar RAL 7035)



Accessories

BC 17,8 OTU MKDSO KMGY - Upper housing part



2279732

<https://www.phoenixcontact.com/us/products/2279732>

HS LC-H-D3/ R1XC1 - Fiber optic

2202313

<https://www.phoenixcontact.com/us/products/2202313>

Multiple light guides, passive, rigid, can be used for the ME, ME-MAX, ME-IO, ME PLC, and EH housing ranges (housing must be processed)



HS LC-H-5X2/ R1XC1 - Fiber optic

2202314

<https://www.phoenixcontact.com/us/products/2202314>

Single light guide, passive, rigid, can be used for the ME, ME-MAX, ME-IO, ME PLC, and EH housing ranges (housing must be processed)



BC 17,8 OTU MKDSO KMGY - Upper housing part

2279732

<https://www.phoenixcontact.com/us/products/2279732>



HS LC-H-D3/ R2XC1-5,08 - Fiber optic

2202315

<https://www.phoenixcontact.com/us/products/2202315>

Multiple light guides, passive, rigid, can be used for the ME, ME-MAX, ME-IO, ME PLC, and EH housing ranges (housing must be processed)



HS LC-H-D2/ R2XC1-2,54 - Fiber optic

2202316

<https://www.phoenixcontact.com/us/products/2202316>

Multiple light guides with glare protection, passive, rigid, can be used for the ME, ME-MAX, ME-IO, ME PLC, and EH housing ranges (housing must be processed)



BC 17,8 OTU MKDSO KMGY - Upper housing part



2279732

<https://www.phoenixcontact.com/us/products/2279732>

HS LC-H-D2/ R2XC2-2,54 - Fiber optic

2202317

<https://www.phoenixcontact.com/us/products/2202317>



Multiple light guides with glare protection, passive, rigid, can be used for the ME, ME-MAX, ME-IO, ME PLC, and EH housing ranges (housing must be processed)

HS LC-H-D2/ R2XC5-2,54 - Fiber optic

2202318

<https://www.phoenixcontact.com/us/products/2202318>



Multiple light guides with glare protection, passive, rigid, can be used for the ME, ME-MAX, ME-IO, ME PLC, and EH housing ranges (housing must be processed)

BC 17,8 OTU MKDSO KMGY - Upper housing part

2279732

<https://www.phoenixcontact.com/us/products/2279732>



HS LC-H-D2/ R2XC10-2,54 - Fiber optic

2202319

<https://www.phoenixcontact.com/us/products/2202319>

Multiple light guides with glare protection, passive, rigid, can be used for the ME, ME-MAX, ME-IO, ME PLC, and EH housing ranges (housing must be processed)



ME B-17,5 MKDSO KMGY - Filler plug

2854115

<https://www.phoenixcontact.com/us/products/2854115>

DIN rail housing, Filler plug for unoccupied terminal points (MKDSO), width: 16 mm, height: 17.05 mm, depth: 8.55 mm, color: light grey (similar RAL 7035)



Phoenix Contact 2024 © - all rights reserved
<https://www.phoenixcontact.com>

Phoenix Contact USA
586 Fulling Mill Road
Middletown, PA 17057, United States
(+717) 944-1300
info@phoenixcon.com