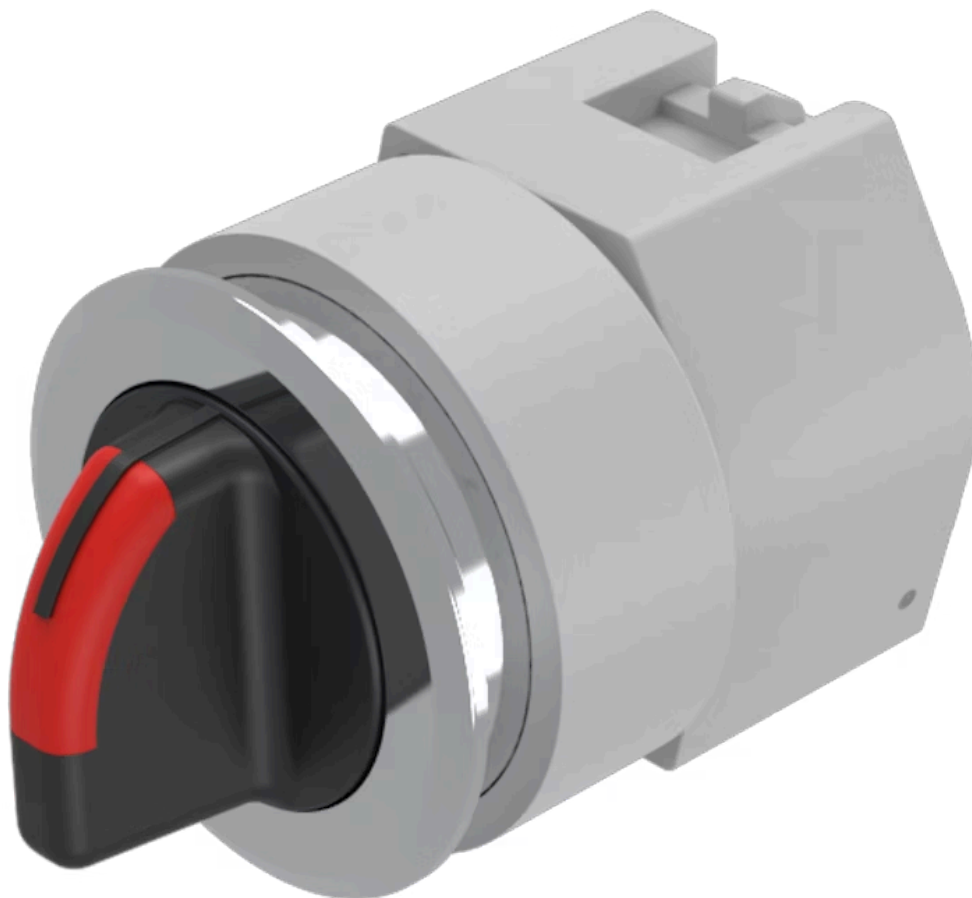


# Actuator

704.409.018I

Distribution by  
DigiKey

**DigiKey**

<https://digikey.eao.com/p/704.409.018I>

Your product:

---



## 704.409.018I Actuator

### FRONT

Front bezel material:	Aluminium
Front bezel colour:	Nature
Front dimension:	Ø 35 mm

### MOUNTING

Design:	flush
Mounting cut-out:	Ø 30.5 mm

### OPERATING-/INDICATION PART

Lever shape:	short
Lever material:	plastic
Lever colour:	Black

### ELECTRICAL CHARACTERISTICS

Standards:	The switches comply with the "Standards for low-voltage switching devices" DIN EN 60947-1
------------	---

### MECHANICAL CHARACTERISTIC

<b>Mechanical lifetime:</b>	≤2.5 Mio. cycles of operation
<b>Switching positions:</b>	3 positions
<b>Weight:</b>	0.056 kg
<b>Switching action:</b>	Momentary - Rest - Maintained
<b>Switching angle:</b>	42° left / 42° right

## AMBIENT CONDITION

<b>Operating temperature:</b>	– 40 °C ... + 55 °C
<b>Storage temperature:</b>	– 40 °C ... + 85 °C
<b>IP Protection:</b>	IP65 front side

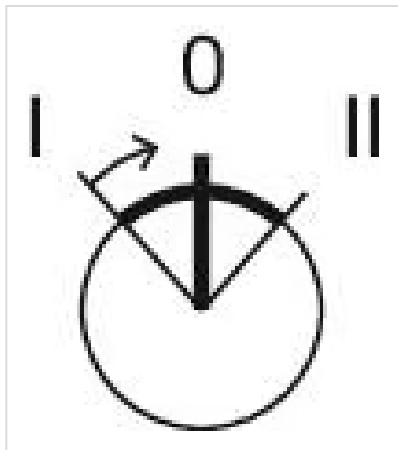
## OTHER

<b>Hints:</b>	Max. 3 switching elements can be clipped on
---------------	---

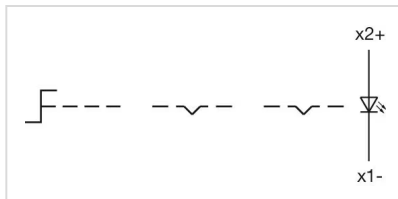
<b>max. number of switching elements:</b>	3
---	---

<b>Short Description:</b>	Actuator, Ø 30.5 mm, Ø 35 mm, optional illuminative, Black, short, Nature, Aluminium, anodised, Momentary - Rest - Maintained
---------------------------	---

**Switching positions:**



**Wiring diagrams:**

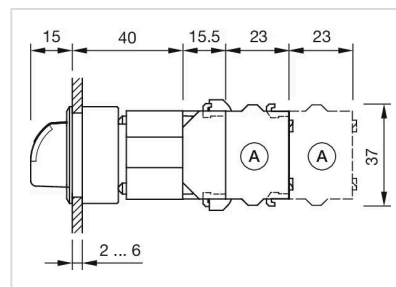


**Mounting cut-outs:**



A = Screw terminal  
 B = Push-in terminal (PIT)  
 C = Plug-in terminal 6.3 mm x 0.8 mm  
 D = Double plug-in terminal 6.3 mm x 0.8 mm

**Dimension drawings:**



X = Screw terminal