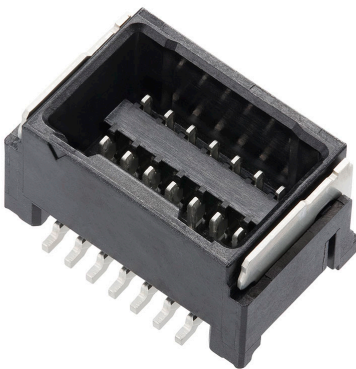




Part Number : [2077601471](#)
Product Description : 1.25mm Pitch, Micro-Lock Plus PCB Header with Potting Capability, Dual Row, Vertical, Surface Mount, Tin-Bismuth Plating, 14 Circuits, Low-Halogen, Black
Series Number : 207760
Status : Active
Product Category : PCB Headers and Receptacles



Documents & Resources

Drawings

[Drawing 2077601471_sd.pdf](#)

3D Models and Design Files


- [2D Drawing DXF 2077601471.dxf](#)
- [2D Drawing DXF \(PDF\) 2077601471.pdf](#)
- [3D Model 2077601471_stp.zip](#)

Specifications

- [Application Specification 5054320000-AS-000.pdf](#)
- [Packaging Specification 2077609200-SPK-200.pdf](#)
- [Product Specification 2045230001-PS-000.pdf](#)
- [Product Specification 2045231001-PS-000.pdf](#)
- [Product Specification 2145270001-PS-000.pdf](#)

Product Environment Compliance

Compliance

GADSL/IMDS	Compliant with Exemption 33; 44
China RoHS	
EU ELV	Not Relevant
Low-Halogen Status	Low-Halogen per IEC 61249-2-21
REACH SVHC	Not Contained per D(2024)4144-DC (27 June 2024)
EU RoHS	Compliant per EU 2015/863

[Multiple Part Product Compliance Statements](#)

- Eu RoHS
- REACH SVHC
- Low-Halogen

Multiple Part Industry Compliance Documents

- IPC 1752A Class C
- IPC 1752A Class D
- Molex Product Compliance Declaration
- IEC-62474
- chemSHERPA (xml)

EU RoHS Certificate of Compliance

Part Details

General

Status	Active
Category	PCB Headers and Receptacles
Series	207760
Description	1.25mm Pitch, Micro-Lock Plus PCB Header with Potting Capability, Dual Row, Vertical, Surface Mount, Tin-Bismuth Plating, 14 Circuits, Low-Halogen, Black
Application	Signal, Wire-to-Board
Component Type	PCB Header
Product Family	Micro-Lock Connector System
Product Name	Micro-Lock Plus
UPC	193264085002

Agency

UL	E29179
----	--------

Electrical

Current - Maximum per Contact	2.0A
Voltage - Maximum	50V AC (RMS)/DC

Physical

Breakaway	No
Circuits (Loaded)	14

Circuits (maximum)	14
Color - Resin	Black
Durability (mating cycles max)	30
First Mate / Last Break	No
Flammability	94V-1
Glow-Wire Capable	No
Guide to Mating Part	No
Keying to Mating Part	Yes
Lock to Mating Part	Yes
Material - Metal	Brass
Material - Plating Mating	Tin-Bismuth
Material - Plating Termination	Tin-Bismuth
Material - Resin	Polyamide
Net Weight	1068.940/mg
Number of Rows	2
Orientation	Vertical
Packaging Type	Embossed Tape on Reel
PCB Locator	No
PCB Retention	Yes
Pitch - Mating Interface	1.25mm
Pitch - Termination Interface	1.25mm
Plating min - Mating	1.000µm
Plating min - Termination	1.000µm
Polarized to Mating Part	Yes
Polarized to PCB	Yes
Robotic Placement	Vacuum Pick-Up Area
Shrouded	Fully
Stackable	No
Temperature Range - Operating	-40° to +105°C
Termination Interface Style	Surface Mount

Mates With / Use With

Mates with Part(s)

Description	Part Number
-------------	-------------

1.25mm Pitch Micro-Lock Plus Dual Row Receptacle Housings	<u>204523</u>
1.25mm Pitch Micro-Lock Plus TPA Type Dual Row Receptacle Housings	<u>214527</u>

This document was generated on Sep 19, 2024