

IBS RL 400 MLR R DIO6/1 LK - Motor starter



2734769

<https://www.phoenixcontact.com/us/products/2734769>

Please be informed that the data shown in this PDF document is generated from our online catalog. Please find the complete data in the user documentation. Our general terms of use for downloads are valid.



Electromechanical reversing load motor starter for INTERBUS; fiber optic technology with 500 kbaud, inputs (24 V DC), integrated motor protection relay (220 V AC to 440 V AC; 8 A, maximum), sensor connection via 5-pos. M12 female connectors, rugged metal housing, IP67 protection

Your advantages

- Rugged metal housing
- Emergency operation on the device or via external operating elements
- Comprehensive diagnostic functions including motor current monitoring
- Rugged Line connector for INTERBUS with fiber optic and supply voltage
- COMBICON connector for motor output
- M12 connector for digital inputs

Commercial data

Item number	2734769
Packing unit	1 pc
Minimum order quantity	1 pc
Product key	DRI517
Catalog page	Page 237 (C-6-2017)
GTIN	4017918906863
Weight per piece (including packing)	4,149 g
Weight per piece (excluding packing)	3,800 g
Country of origin	DE

Technical data

Dimensions

Width	185.1 mm
Height	193 mm
Depth	138 mm

Interfaces

INTERBUS

Connection method	Fiber optics
Transmission speed	500 kbps

System properties

Module

ID code (dec.)	3
ID code (hex)	03
Length code (hex)	01
Length code (dec)	1
Process data channel	16 bit
Input address area	2 Byte
Output address area	2 Byte
Register length	2 Byte

Input data

Digital: Digital inputs

Number of inputs	6
Connection method	M12 connector
Connection technology	3-, 4-conductor
Number of positions	5
Input voltage	24 V DC (DIN EN 61131-2)
Input voltage range "0" signal	0 V ... 5 V
Input voltage range "1" signal	11 V ... 30 V
Filter time	3 ms
Typical input current per channel	5 mA (for $U_{S1} = 24 \text{ V}$)

Product properties

Product type	I/O component
Product family	Ruggedline
Type	Block design
Diagnostics messages	Mains failure, phase failure, blown fuse Error message in diagnostic code (bus) and display by means of the E LED on the motor starter
	Motor connector not plugged in, motor temperature exceeded,

	thermistor line short-circuited Error message in diagnostic code (bus) and display by means of the E LED on the motor starter
	Sensor supply failure Error message in diagnostic code (bus) and display by means of the E LED on the motor starter
	Failure of the actuator supply Error message in diagnostic code (bus) and display by means of the E LED on the motor starter
	Motor overcurrent Error message in diagnostic code (bus) and display by means of the E LED on the motor starter
	Output stage cannot be controlled Error message in diagnostic code (bus) and display by means of the E LED on the motor starter
	Module error during self test Message to the master

Electrical properties

Supply: Module electronics

Supply voltage	24 V DC
Supply voltage range	18.5 V DC ... 32 V DC (including ripple)
Ripple	3.6 V _{pp}

Connection data

Connection method	M12 connector
-------------------	---------------

Environmental and real-life conditions

Ambient conditions

Degree of protection	IP65/IP67
Ambient temperature (operation)	0 °C ... 55 °C
Air pressure (operation)	860 hPa ... 1080 hPa (up to 1500 m above sea level)
Air pressure (storage/transport)	660 hPa ... 1080 hPa (up to 3500 m above sea level)
Ambient temperature (storage/transport)	-25 °C ... 70 °C
Permissible humidity (operation)	100 %
Permissible humidity (storage/transport)	95 % (non-condensing)

Standards and regulations

Protection class	I (IEC 61140, EN 61140, VDE 0140-1)
------------------	-------------------------------------

Air clearances and creepage distances

Air clearances and creepage distances	in accordance with EN 50178: 1998
---------------------------------------	-----------------------------------

Mounting

Mounting type	on mounting panel
	Wall mounting

IBS RL 400 MLR R DIO6/1 LK - Motor starter



2734769

<https://www.phoenixcontact.com/us/products/2734769>

Classifications

ECLASS

ECLASS-11.0	27242609
-------------	----------

ETIM

ETIM 8.0	EC001605
----------	----------

UNSPSC

UNSPSC 21.0	32151600
-------------	----------

2734769

<https://www.phoenixcontact.com/us/products/2734769>

Environmental product compliance

EU RoHS	
Fulfills EU RoHS substance requirements	Yes
Exemption	6(a), 6(a)-I, 6(c), 7(a), 7(c)-I
China RoHS	
Environment friendly use period (EFUP)	EFUP-E
	No hazardous substances above the limits
EU REACH SVHC	
REACH candidate substance (CAS No.)	Lead(CAS: 7439-92-1)

IBS RL 400 MLR R DIO6/1 LK - Motor starter

2734769

<https://www.phoenixcontact.com/us/products/2734769>



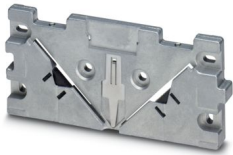
Accessories

IBS RL AP - Lower mounting part

2731128

<https://www.phoenixcontact.com/us/products/2731128>

Mounting panel for Ruggedline devices



IBS RL MARKER-SET - Marking label

2732729

<https://www.phoenixcontact.com/us/products/2732729>

Set of 50 small and 50 large metal marking labels



IBS RL 400 MLR R DIO6/1 LK - Motor starter

2734769

<https://www.phoenixcontact.com/us/products/2734769>



IBS RL MLR PLSET R-8A - Connector set

2740504

<https://www.phoenixcontact.com/us/products/2740504>

Accessory set comprising: connectors and Pg screw connections



PSM-LWL-RUGGED-980/1000 - FO cable

2744322

<https://www.phoenixcontact.com/us/products/2744322>



Polymer fiber cable, duplex 980µm/1000µm, heavy-weight version for installation in stationary systems and machines, by the meter without male connector

IBS RL 400 MLR R DIO6/1 LK - Motor starter

2734769

<https://www.phoenixcontact.com/us/products/2734769>



PSM-LWL-RUGGED-FLEX-980/1000 - FO cable

2744335

<https://www.phoenixcontact.com/us/products/2744335>

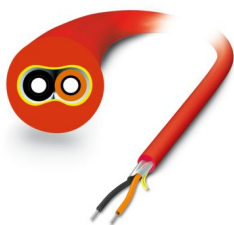


Polymer fiber cable, duplex 980/1000 μm , heavy-weight, highly flexible version for flexible conduit applications, by the meter, without connector

PSM-LWL-KDHEAVY-980/1000 - FO cable

2744319

<https://www.phoenixcontact.com/us/products/2744319>



Polymer fiber cable, duplex 980 μm /1000 μm , medium-weight version for installation in stationary systems and machines, by the meter without male connector

IBS RL 400 MLR R DIO6/1 LK - Motor starter

2734769

<https://www.phoenixcontact.com/us/products/2734769>



IBS RL CONNECTION-LK - Cable set

2733029

<https://www.phoenixcontact.com/us/products/2733029>

Assembled cable jumper as a short connection between two INTERBUS Rugged Line devices with fiber optic bus connectors and power supply, approximately 30 cm



IBS PWR/5HD/F - Cable

2731775

<https://www.phoenixcontact.com/us/products/2731775>

Power supply cable, gray, welding-splash-resistant in standard applications, 5 x 1.5 mm², highly flexible, sold by the meter



IBS RL 400 MLR R DIO6/1 LK - Motor starter

2734769

<https://www.phoenixcontact.com/us/products/2734769>



IBS PWR/5 - Cable

2820000

<https://www.phoenixcontact.com/us/products/2820000>



Power supply cable, gray, welding-splash-resistant in standard applications, 5 x 1.5 mm², sold by the meter

IBS RL 24 ADAP-LK/T - Adapter set

2725040

<https://www.phoenixcontact.com/us/products/2725040>



INTERBUS Rugged Line adapter for converting the fiber optic remote bus to a copper wire remote bus

IBS RL 400 MLR R DIO6/1 LK - Motor starter

2734769

<https://www.phoenixcontact.com/us/products/2734769>



IBS RL 24 ADAP-T/LK - Adapter set

2725037

<https://www.phoenixcontact.com/us/products/2725037>



INTERBUS Rugged Line adapter for converting the copper wire remote bus to a fiber optic remote bus

IBS HVO/M12 - Operating panel

2837006

<https://www.phoenixcontact.com/us/products/2837006>



Hand-held operating panel, for INTERBUS motor starter and INTERBUS speed controller with IP54 degree of protection

IBS RL 400 MLR R DIO6/1 LK - Motor starter

2734769

<https://www.phoenixcontact.com/us/products/2734769>



IBS RL PLUG-LK/POF - Bus connector

2731076

<https://www.phoenixcontact.com/us/products/2731076>

Connector for the fiber optic bus with polymer fiber cable and for the power supply with QUICKON connection method



Phoenix Contact 2024 © - all rights reserved

<https://www.phoenixcontact.com>

Phoenix Contact USA
586 Fulling Mill Road
Middletown, PA 17057, United States
(+717) 944-1300
info@phoenixcon.com