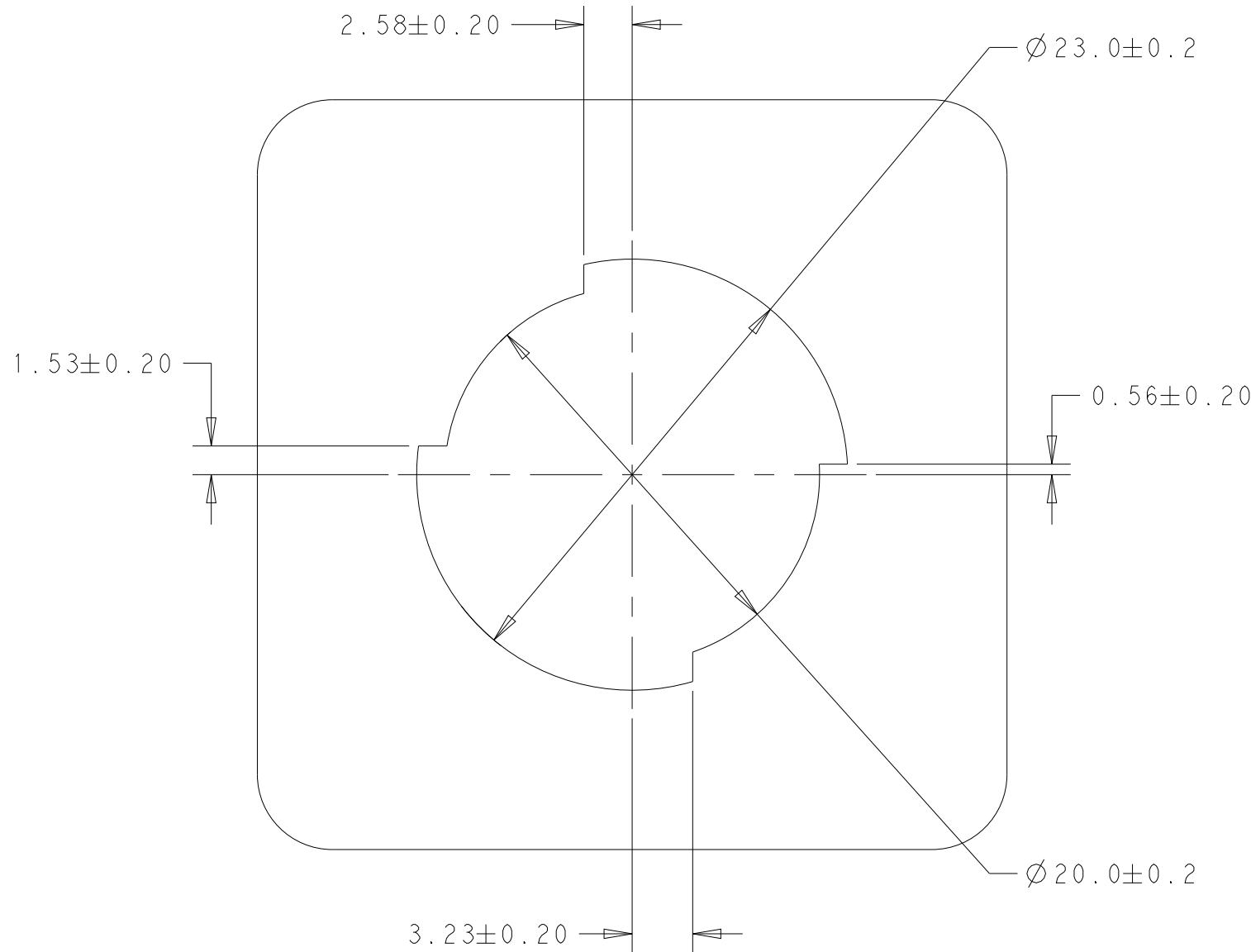
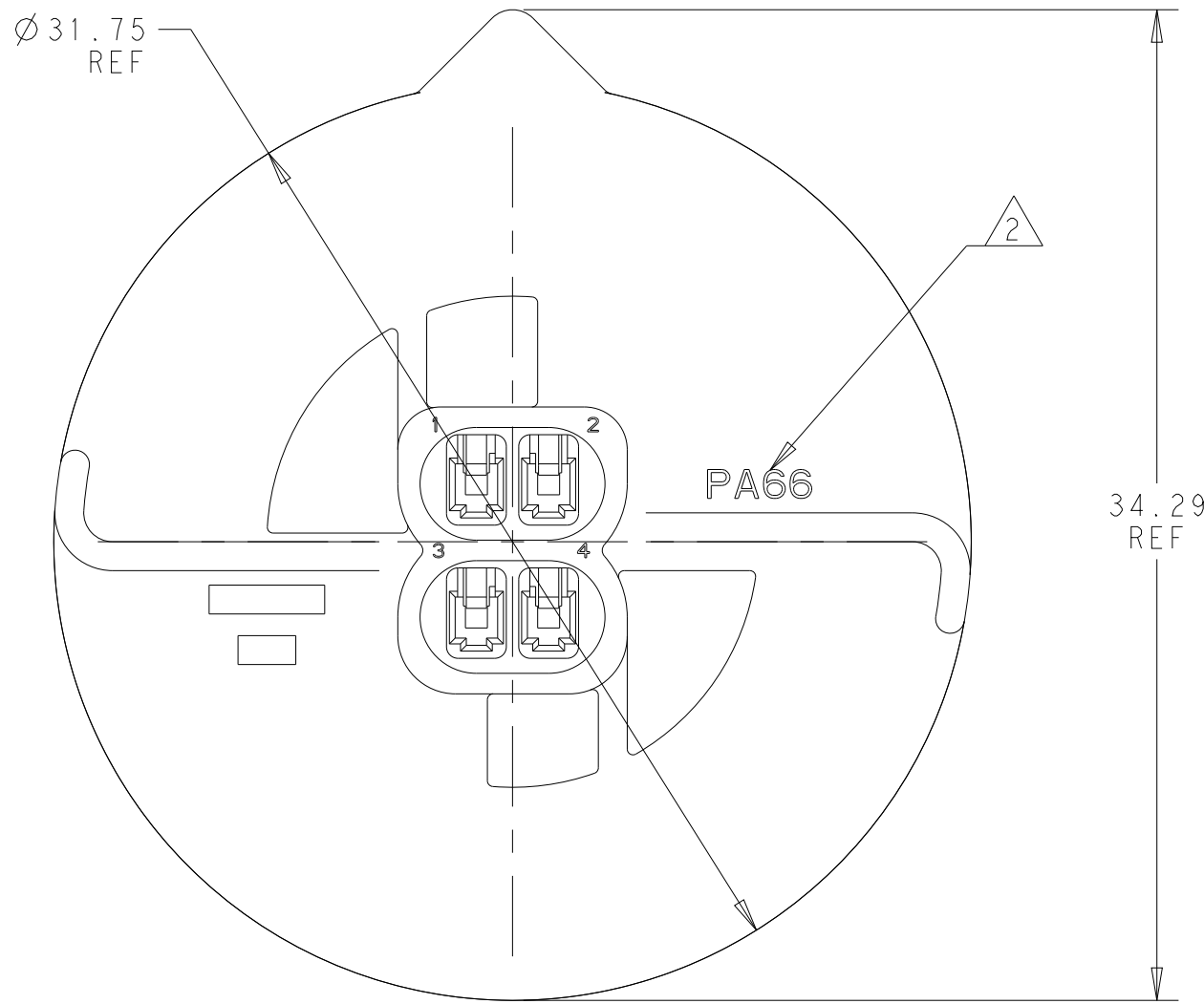
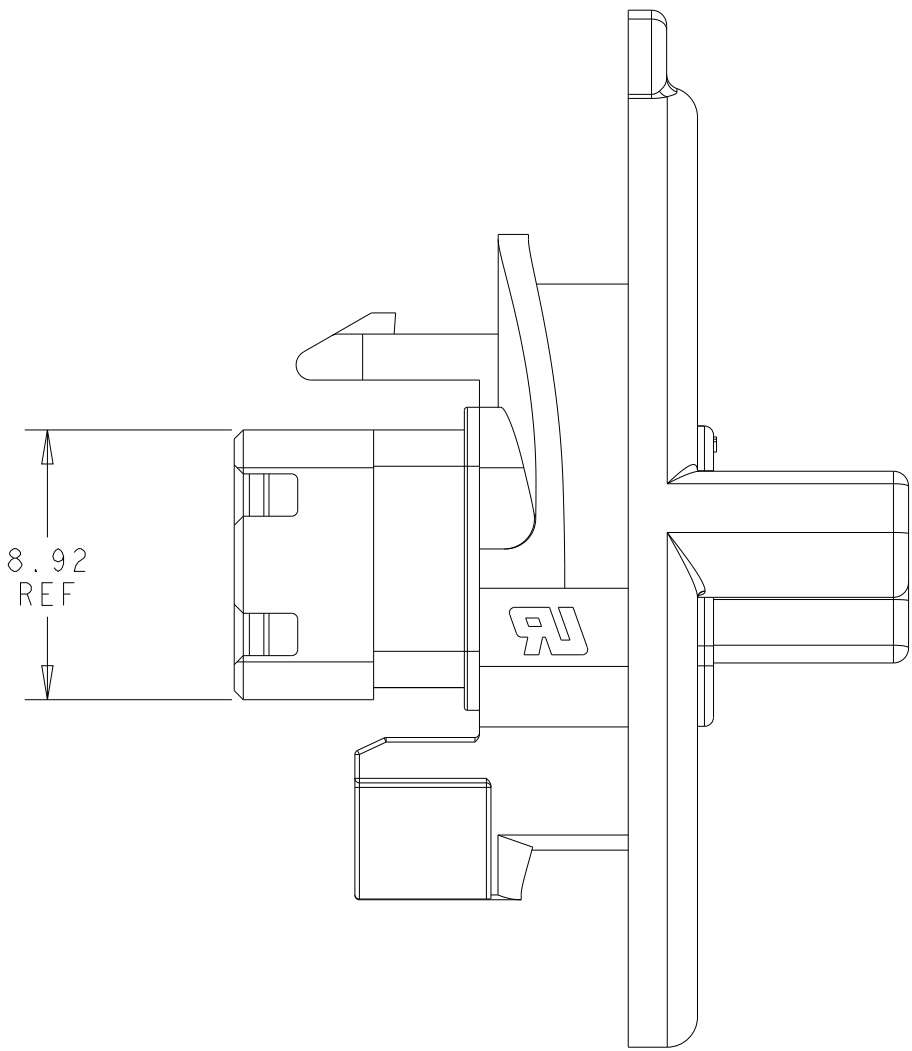
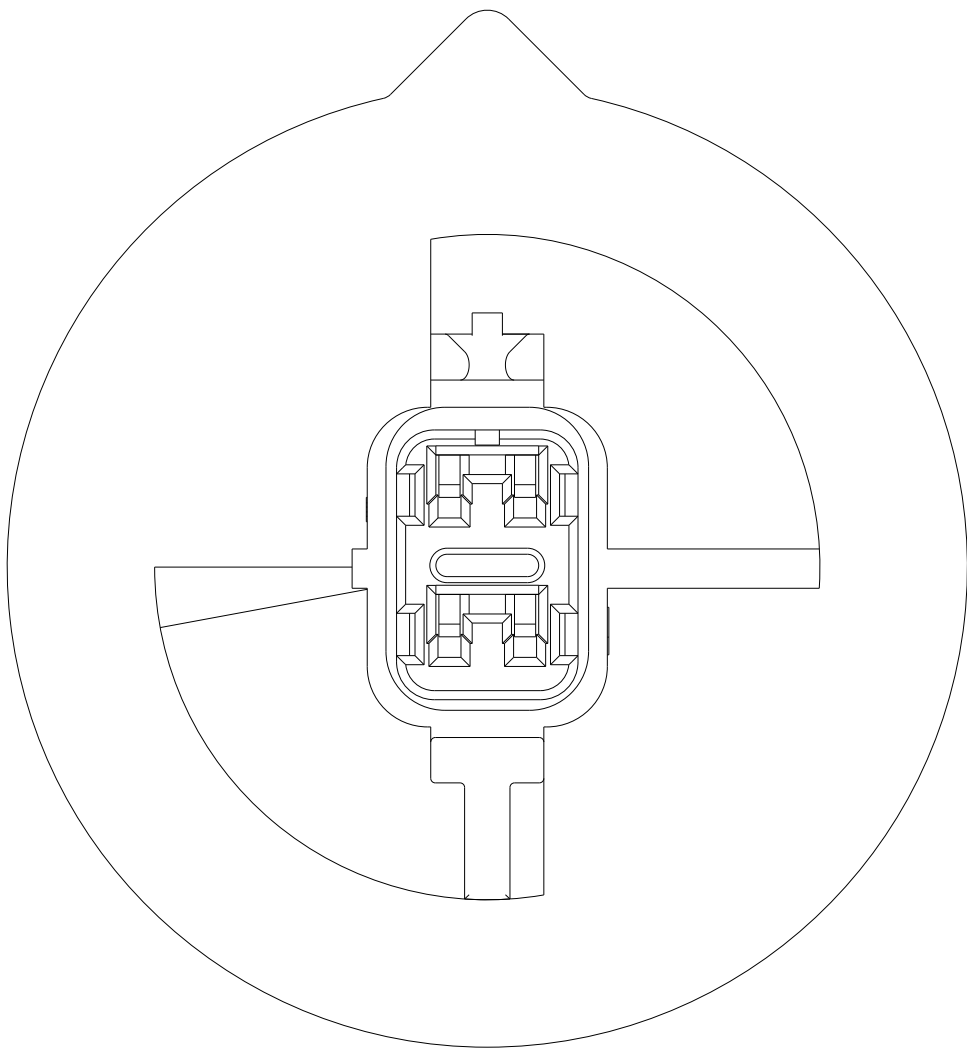
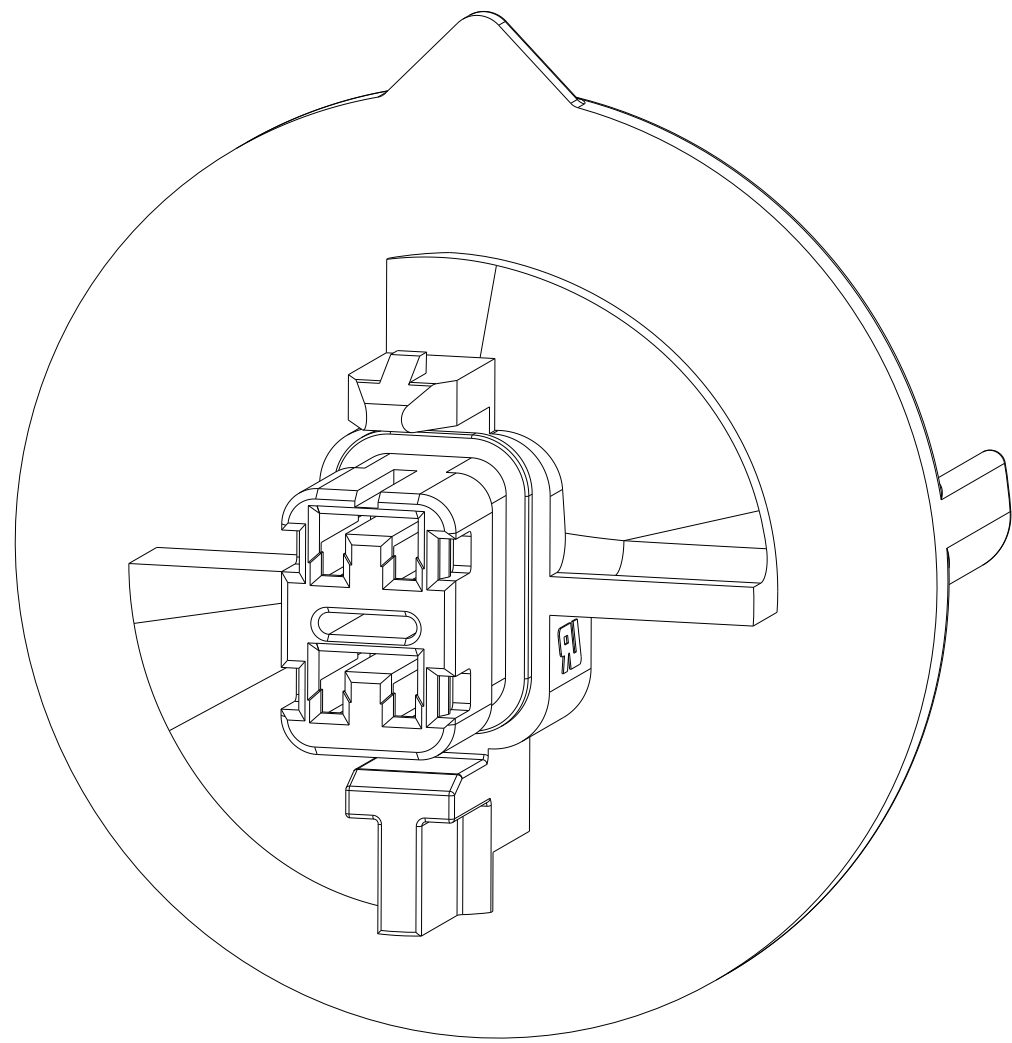
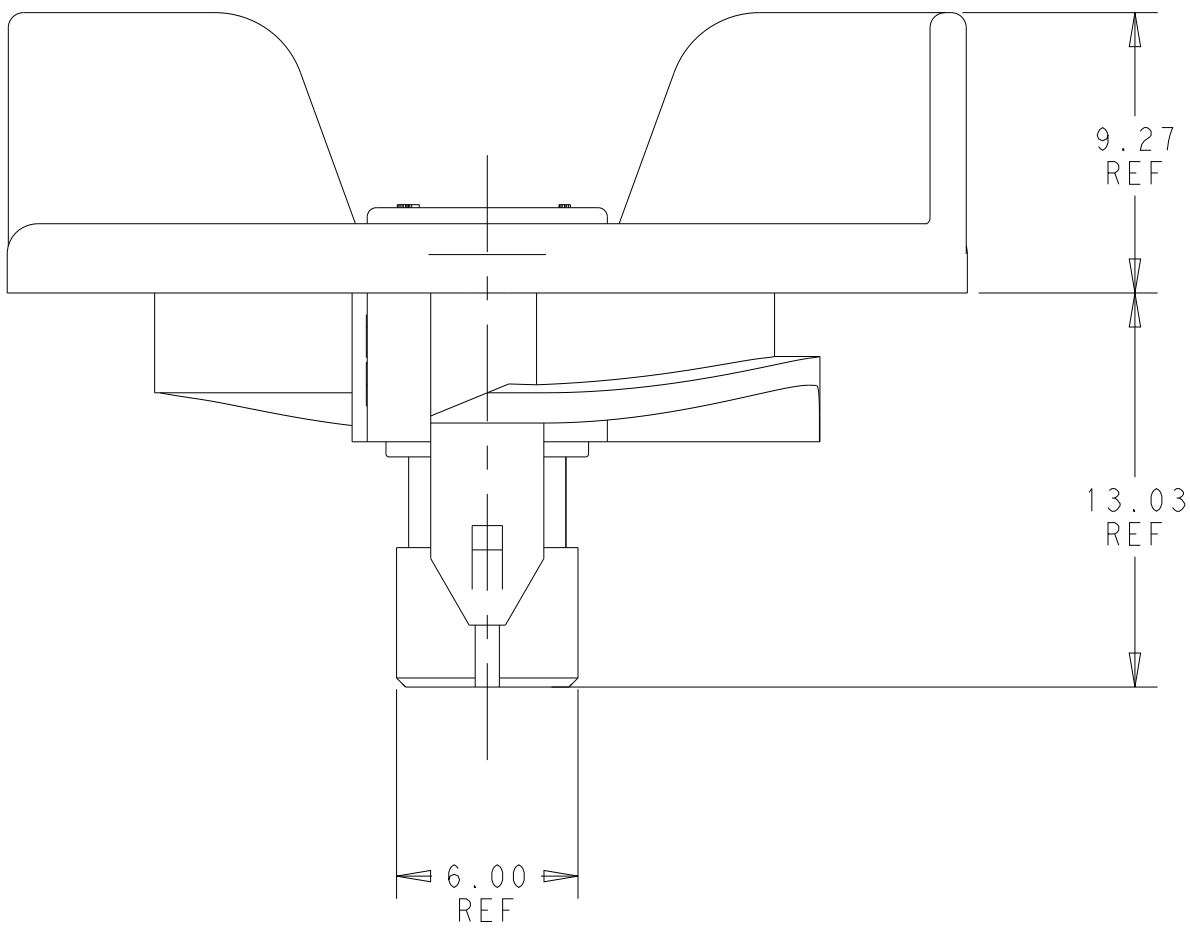
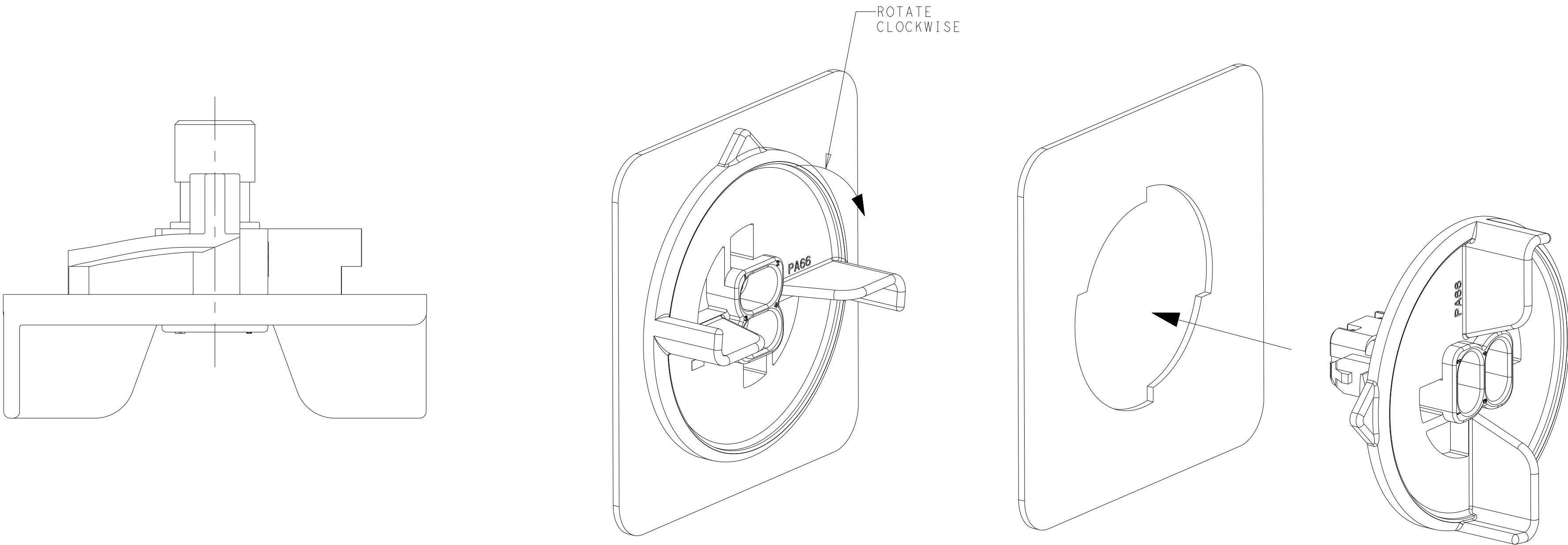


REVISIONS					
P	LTR	DESCRIPTION	DATE	DWN	APVD
	A	RELEASED PER ECO-20-008224	12JUN2020	BKW	SF
	B	RELEASED PER ECR-21-112363	11OCT2021	SK	DZ

- 1 MATERIAL: PA66 COLOR: NATURAL
- 2 MATERIAL MARK: PA66
3. RECOMMENDED PANEL THICKNESS: 2.16-2.67
4. PANEL MUST BE PUNCHED SO THAT THE HOUSING ENTERS THE PANEL IN THE SAME DIRECTION AS THE PUNCH.



RECOMMENDED PANEL CUT-OUT



ASSEMBLY PROCEDURE

2*2 (4 POSN)	2366250-4
POSN	PART NUMBER

THIS DRAWING IS A CONTROLLED DOCUMENT.		DWN B. WEAVER 04DEC2019	TE Connectivity	
DIMENSIONS:		CHK S. FERNANDES 04DEC2019		
mm	TOLERANCES UNLESS OTHERWISE SPECIFIED:	APVD J. MARSH 04DEC2019	NAME	PLUG HOUSING, TWIST N LOCK, SDL 2.5 WATERPROOF
0 PLC	±"	PRODUCT SPEC	SIZE	114-143067
1 PLC	±"	108-143069	CAGE CODE	2366250
2 PLC	±"	APPLICATION SPEC	DRAWING NO	100779
3 PLC	±"	114-143067	RESTRICTED TO	-
4 PLC	±"	WEIGHT	SCALE	4:1
ANGLES	±"	CUSTOMER DRAWING	SHEET	1 OF 1
FINISH	-		REV	B