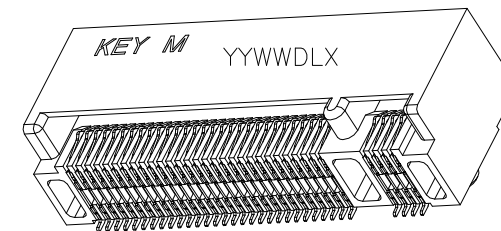
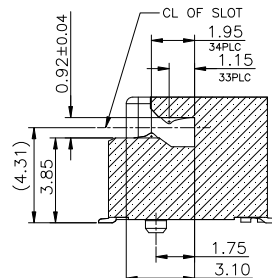
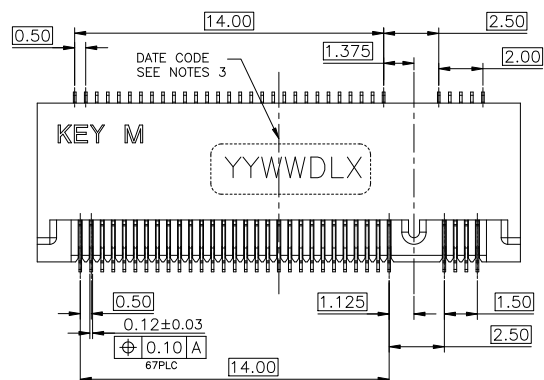


HF

Halogen Free

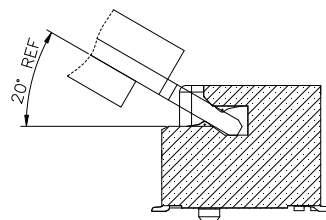
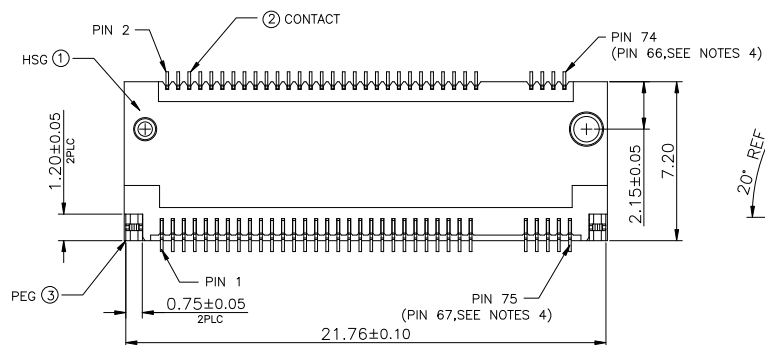
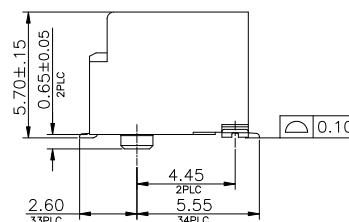
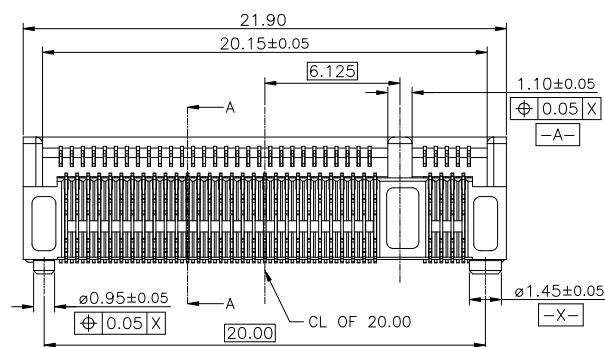



NOTES:

1. MATERIAL:
 - 1.1 HOUSING: HIGH TEMPERATURE THERMOPLASTIC, UL94V-0, COLOR: BLACK.
 - 1.2. CONTACT: COPPER ALLOY.
 - 1.3. SOLDER PEG: STAINLESS STEEL.
2. FINISH:
 - 2.1 CONTACT:
 - UNDERPLATING: NICKEL 50u" MIN. OVERALL
 - MATING AREA: GOLD PLATING, THICKNESS SEE TABLE
 - SOLDER AREA: GOLD FLASH 1u" MIN.
 - 2.2 SOLDER PEG:
 - UNDERPLATING NICKEL 50u" MIN. OVERALL
 - 80u" MIN. MATTE TIN ON SURFACE
3. DATE CODE: YYWDLX
 - YY: YEAR (15: 2015)
 - WW: WEEK (25: THE 25TH WEEK)
 - D: DAY (1~7: SUNDAY~SATURDAY)
 - L: LINE NUMBER OF ASSEMBLY (A: LINE A)
 - X: D OR N (D: DAY; N: NIGHT)
4. CONNECTOR ACTUAL PIN QUANTITY IS 67, AS THE KEY TAKING OUT 8 PINS.
5. PRODUCT SPECIFICATION: SEE FCI GS-12-1195
6. PART NUMBER DESCRIPTION:
 - 10133306-00 X R LF

LF: LEAD FREE & RoHS COMPLIANCE

 PACKAGE CODE:
 R: TAPE & REEL PACKING

 PLATING CODE:
 1: GOLD FLASH ON CONTACT AREA
 4: 15u" MIN. GOLD ON CONTACT AREA
 5: 30u" MIN. GOLD ON CONTACT AREA


MATING ANGLE ILLUSTRATION

30u" Au	10133306-005RLF
15u" Au	10133306-004RLF
GOLD FLASH	10133306-001RLF
CONTACT AREA	FCI P/N

mat'l. code				surface	tolerance	projection	product family		
ltr	ecn no	dr	date	tolerances unless otherwise specified			title		
A		TAI	2015-04-28	angles	.X	±0.3	M.2 CONNECTOR 5.7mm H, M KEY		
				linear	.XX	±0.25			
				X°±2°	.XXX	±0.05			
				dr	KENNY TAI	2015-04-28	FCI		
				enrg	KENNY TAI	2015-04-28			
				chr	KENNY TAI	2015-04-28			
				appd	PM ZHENG	2015-04-28			
sheet index	revision sheet	A	A	A	3		dwg no	sheet 1 of 3	size
		1	2				10133306		A4
							type	Customer Drawing	

~~PB~~

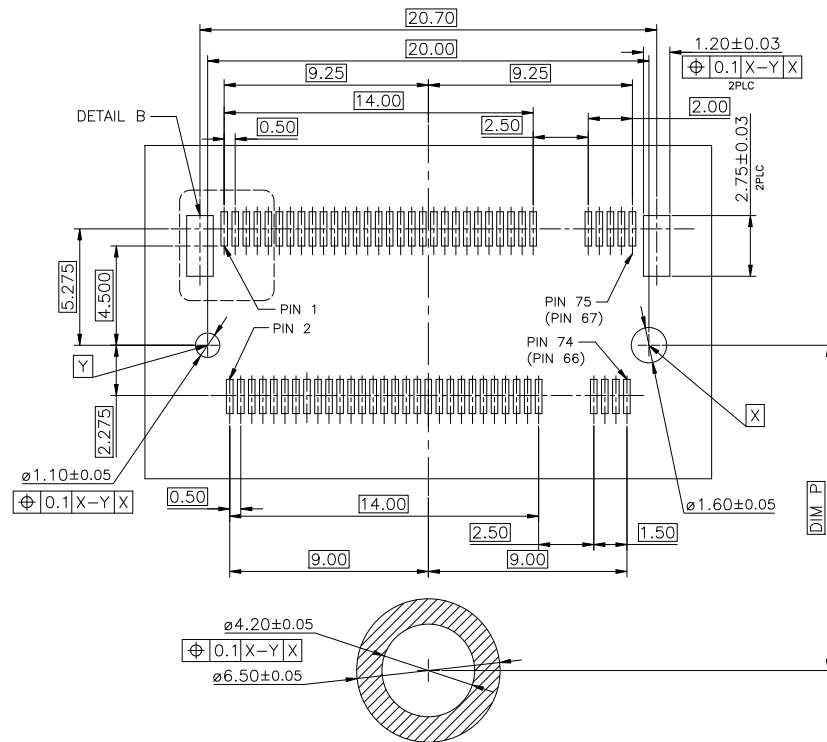
Technical drawing showing a cross-section of a concrete slab with dimensions. The drawing includes a hatched area representing the concrete slab and a dashed line indicating the reinforcement layout. Dimensions are provided in millimeters (mm) and meters (m).

Dimensions:

- Overall width: 22.00 ± 0.15 m
- Overall height: 19.85 ± 0.10 m
- Reinforcement diameter: 1.50 mm
- Reinforcement spacing: 14.00 mm
- Reinforcement diameter: 6.125 mm
- Reinforcement spacing: 1.125 mm
- Reinforcement diameter: 2.50 mm
- Reinforcement spacing: 0.50 mm
- Reinforcement diameter: 0.55 MAX.
- Reinforcement spacing: 2.50 ± 0.15 m
- Reinforcement spacing: 3.50 ± 0.15 m

Technical drawing of a vertical rod with a 20°±5° taper. Dimensions include 0.80±0.08, 1.35 Max., and 1.50 Max.

Technical drawing of a cross-section of a concrete slab. The drawing shows a slab with a total width of 14.00. The slab is supported by a wall on the left and a column on the right. The wall has a thickness of 2.00. The column has a diameter of 1.375. The slab thickness is 0.55. The distance from the wall face to the centerline of the column is 1.20 ± 0.05. The distance from the column centerline to the right edge of the slab is 0.35 ± 0.03. The drawing also shows a section line and a hatched area representing the slab.



22110	108.25
2280	78.25
2260	58.25
2242	40.25
2230	28.25
3042	40.25
3030	28.25
MODULE TYPE	DIM F

Printed: Jun 09, 2015

Mouser Electronics

Authorized Distributor

Click to View Pricing, Inventory, Delivery & Lifecycle Information:

[FCI / Amphenol:](#)

[10133306-004RLF](#)