

UEG 20 - Electronics housing



2790211

<https://www.phoenixcontact.com/us/products/2790211>

Please be informed that the data shown in this PDF document is generated from our online catalog. Please find the complete data in the user documentation. Our general terms of use for downloads are valid.

Electronic housing, for PCB insertion, fully equipped with 4 screw or tab connections per side



Commercial data

Item number	2790211
Packing unit	10 pc
Minimum order quantity	10 pc
Sales key	AC11
Product key	ACHCCA
Catalog page	Page 722 (C-1-2013)
GTIN	4017918072292
Weight per piece (including packing)	48.043 g
Weight per piece (excluding packing)	42.9 g
Customs tariff number	85369010
Country of origin	DE

Technical data

Product properties

Product type	Complete housing
Housing type	Component housing
Housing series	UEG
Product family	UEG
Type	Connection system integrated, housing closed
Number of positions	8
Pitch	5 mm
Number of rows	2
Type	Complete housing equipped with 3 screw connections per side
Pin layout	Linear pinning

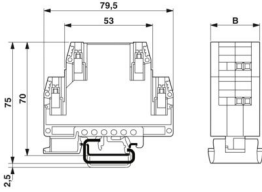
Electrical properties

Nominal voltage U_N	500 V (Voltage and current values are affected by the configuration of the printed circuit board.)
Nominal current I_N	10 A

Connection data

Connection method	Screw connection
-------------------	------------------

Dimensions

Dimensional drawing	
Width	20 mm
Installed height	70 mm
Height NS 35/7,5	70 mm
Depth	79.5 mm
Pitch	5 mm

Material specifications

Color (Housing)	green (RAL 6021)
Flammability rating according to UL 94	V0
Housing material	Polyamide
Surface characteristics	untreated

Environmental and real-life conditions

Power dissipation single housing for 20 °C

2790211

<https://www.phoenixcontact.com/us/products/2790211>

Ambient temperature	20 °C
Reduction factor	1

Power dissipation single housing for 30 °C

Ambient temperature	30 °C
Reduction factor	0.78

Power dissipation single housing for 40 °C

Ambient temperature	40 °C
Reduction factor	0.61

Power dissipation single housing for 50 °C

Ambient temperature	50 °C
Reduction factor	0.48

Power dissipation single housing for 60 °C

Ambient temperature	60 °C
Reduction factor	0.37

Ambient conditions

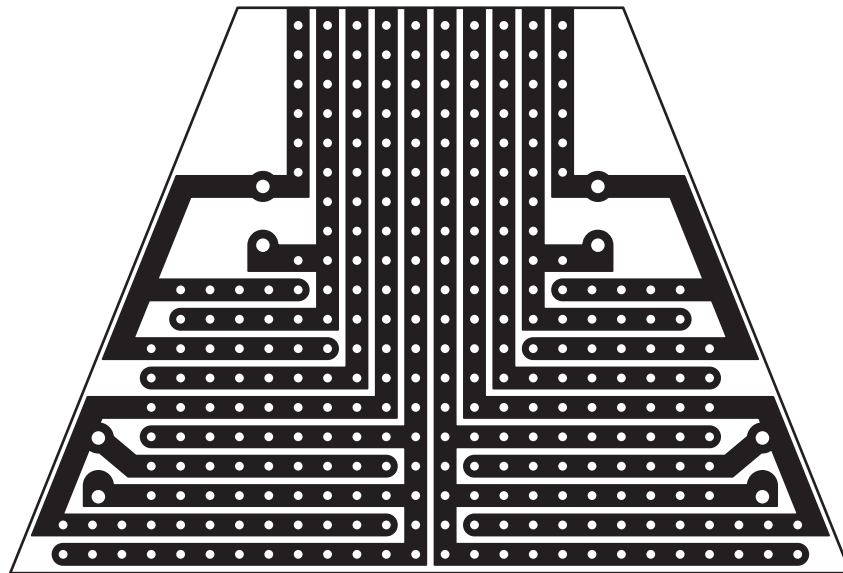
Degree of protection	IP20
Ambient temperature (operation)	-40 °C ... 105 °C (depending on power dissipation)
Ambient temperature (storage/transport)	-40 °C ... 70 °C
Ambient temperature (assembly)	-5 °C ... 100 °C

Mounting

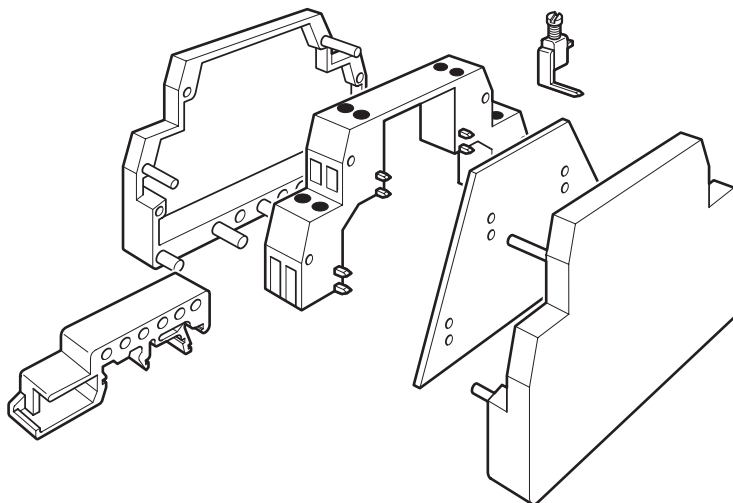
Mounting type	DIN rail mounting
Pin layout	Linear pinning

Drawings

Schematic diagram



Exploded view



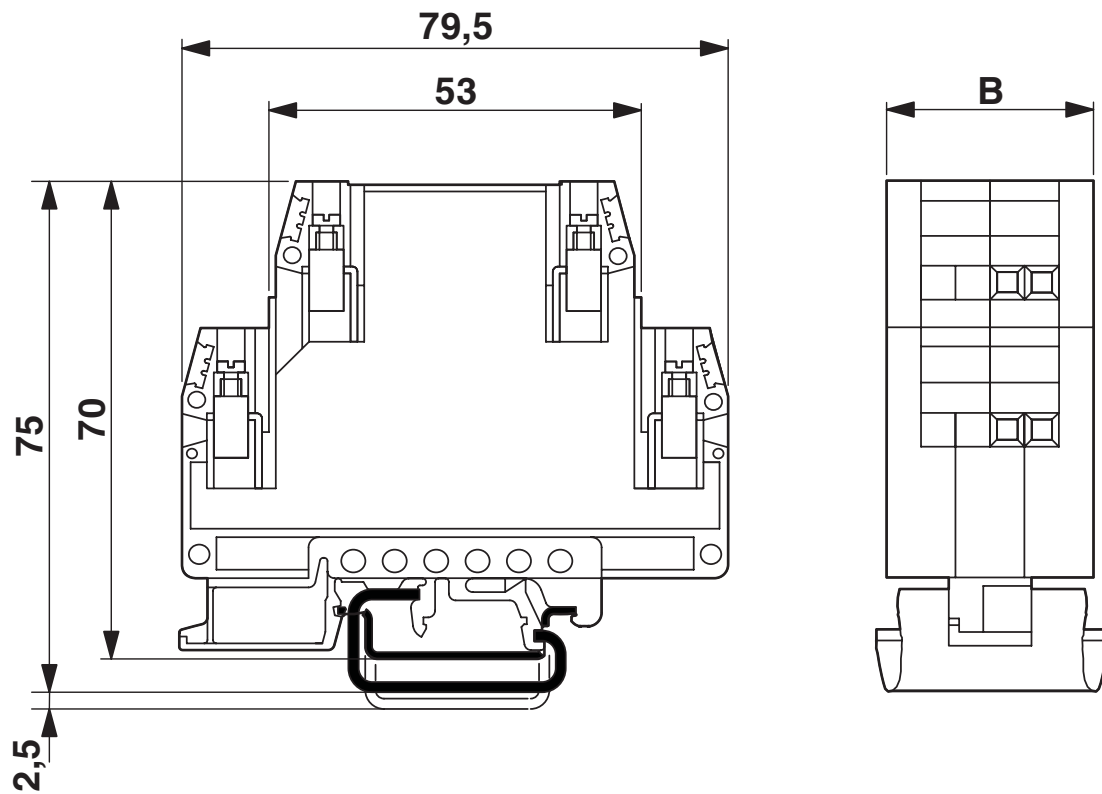
UEG 20 - Electronics housing

2790211

<https://www.phoenixcontact.com/us/products/2790211>



Dimensional drawing



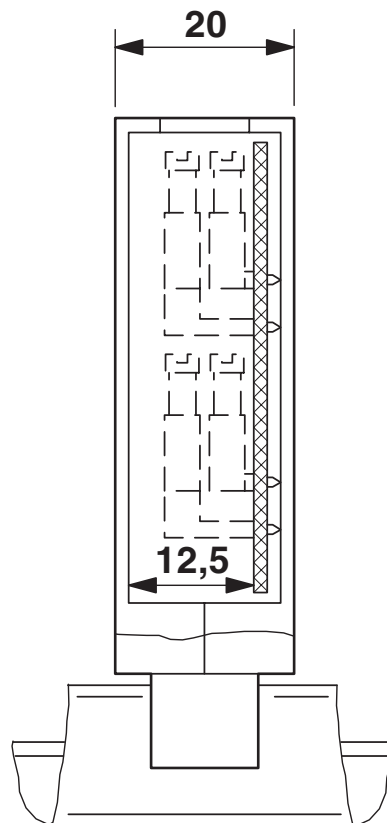
UEG 20 - Electronics housing

2790211

<https://www.phoenixcontact.com/us/products/2790211>

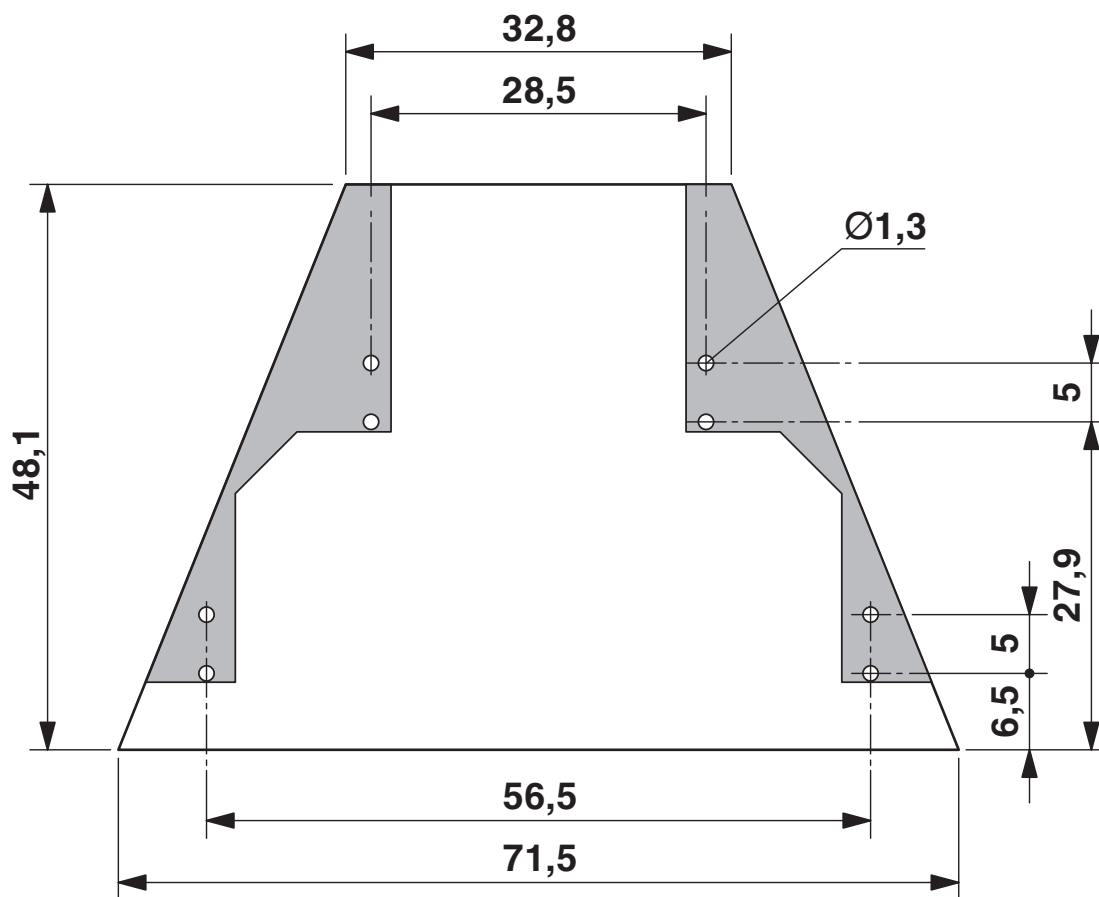


Dimensional drawing



UEG 20 with 1 PCB, up to max. 8 pos.

Dimensional drawing



UEG 20 - Electronics housing




2790211

<https://www.phoenixcontact.com/us/products/2790211>

Approvals

To download certificates, visit the product detail page: <https://www.phoenixcontact.com/us/products/2790211>

<div> cULus Recognized Approval ID: E60425-19770427</div>				
	Nominal voltage U_N	Nominal current I_N	Cross section AWG	Cross section mm^2
Use group B				
	300 V	10 A	30 - 12	-
Use group D				
	300 V	10 A	30 - 12	-

UEG 20 - Electronics housing



2790211

<https://www.phoenixcontact.com/us/products/2790211>

Classifications

ECLASS

ECLASS-11.0	27182702
ECLASS-13.0	27190501

ETIM

ETIM 9.0	EC001031
----------	----------

UNSPSC

UNSPSC 21.0	31261500
-------------	----------

Environmental product compliance

EU RoHS	
Fulfills EU RoHS substance requirements	Yes, No exemptions
China RoHS	
Environment friendly use period (EFUP)	EFUP-50
	An article-related China RoHS declaration table can be found in the download area for the respective article under "Manufacturer declaration". For all articles with EFUP-E, no China RoHS declaration table issued and required.
EU REACH SVHC	
REACH candidate substance (CAS No.)	No substance above 0.1 wt%