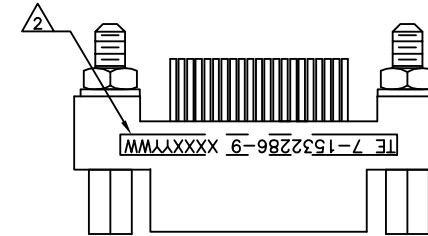
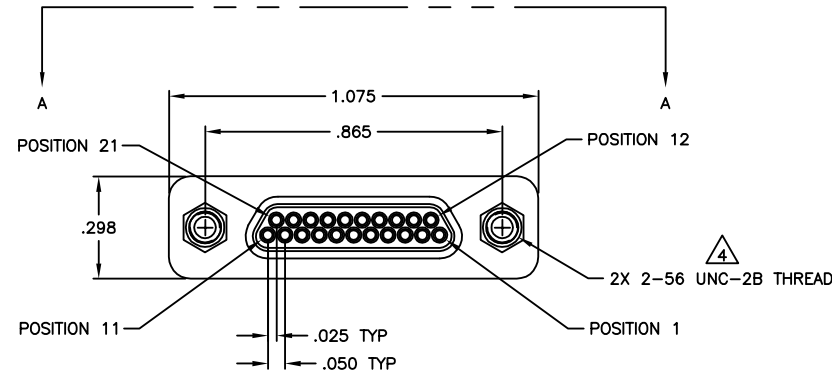
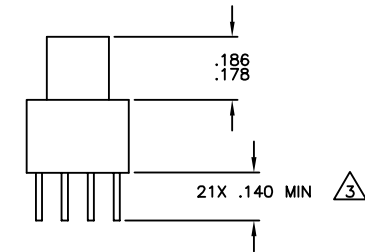
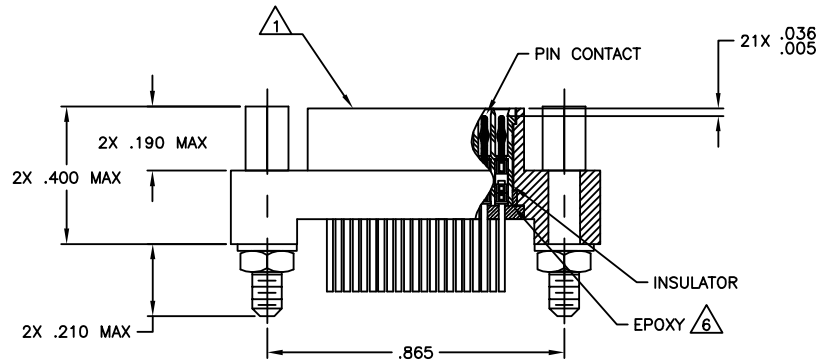


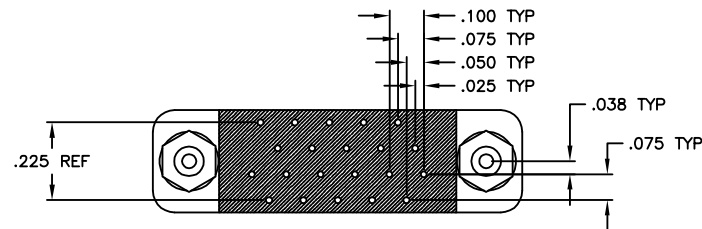
REVISIONS				
P	LR	DESCRIPTION	DATE	DW APD
F		REV PER ECO 18-011476	7-19-18	CT EH



VIEW A-A



JACKPOSTS OMITTED FOR CLARITY

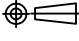


SEE SHEET 2 FOR NOTES

THIS DRAWING IS A CONTROLLED DOCUMENT.		DW	22 SEP 16		
C SCHOLL		CHK	-		
APD		C SCHOLL	22 SEP 16	NAME	
MATERIAL		PRODUCT SPEC		MCK PLUG ASSEMBLY, 21 POSITION 180 DEGREE WITHOUT TB BLOCK SPECIAL PLATING	
FINISH		APPLICATION SPEC		RESTRICTED TO	
SEE NOTES		WEIGHT		A2 98278 C=7-1532286-9	
CUSTOMER DRAWING		SCALE		4:1	
		SHEET		1 of 2	
		REV		F	

REVISIONS				
P	LR	DESCRIPTION	DATE	DRW / APVD
-	-	SEE SHEET 1	-	-

- 1 SHELL MATERIAL: 6061-T6 ALUMINUM, NICKEL PLATED PER SAE-AMS-2404 OR SAE-AMS-C-26074 .0015/.0019 THICK
INSULATOR: GLASS FILLED THERMOPLASTIC
CONTACTS: COPPER OR COPPER ALLOY WITH GOLD FINISH
HARDWARE: 300 SERIES STAINLESS STEEL
WIRE: 25 AWG; COPPER WITH GOLD FINISH.
- 2 MARK PER MEP203-12, CODES B, C & H (SERIAL NUMBERING) ON PRIMARY SURFACE
SERIAL NUMBER IS AS FOLLOWS: XXXXYWW
SERIAL NUMBER EXAMPLE: 01021828. WHERE 0102 IS CONSECUTIVE NUMBERING AND
1828 IS PART PRODUCED THE 28th WEEK OF 2018.
- 3 LEADS ARE TO BE SOLDER DIPPED WITH Sn100. LEADS TO BE DIPPED WITHIN AREA SHOWN.
- 4 JACKPOST HARDWARE SHALL BE PERMANENTLY INSTALLED AS SHOWN WHEN REQUIRED BY THE MIL PIN. JACKPOST DIMENSIONS AND
REQUIREMENTS ARE DEFINED IN MIL-DTL-83513/5.
- 5 ELECTRICAL REQUIREMENTS:
CURRENT RATING: 3 AMPS
TEMP RATING -55 DEGREES C TO +125 DEGREES C
INSULATION RESISTANCE: 5000 MEGOHMS MIN
DWV, SEA LEVEL/ALTITUDE: 600VAC/150 VAC
CONTACT RESISTANCE: 26 MILLIOHMS MAX @ 2.5 AMPS
LOW SIGNAL LEVEL CR: 25 MILLIOHMS
- 6 EPOXY ENCAPSULATION

THIS DRAWING IS A CONTROLLED DOCUMENT.		DRW C SCHOLL 22 SEP 16	TE Connectivity	
DIMENSIONS: INCHES		CHK -	NAME	
TOLERANCES UNLESS OTHERWISE SPECIFIED:		APVD C SCHOLL 22 SEP 16	MCK PLUG ASSEMBLY, 21 POSITION 180 DEGREE WITHOUT TB BLOCK SPECIAL PLATING	
		PRODUCT SPEC -	SIZE A2	RESTRICTED TO -
MATERIAL SEE NOTES		APPLICATION SPEC -	CAGE CODE 98278	DRAWING NO C=7-1532286-9
FINISH SEE NOTES		WEIGHT 0	CUSTOMER DRAWING	SCALE 4:1 SHEET 2 of 2 REV E