



Terminals & Splices > Terminal Housings, Insulation Sleeves & Blocks > Cluster Blocks



Number of Circuits: 3

Primary Product Material: PBT

Wire Size: .326 – 5.26 mm²

Operating Temperature Range: -20 – 120 °C [-4 – 248 °F]

Features

Product Type Features

Compatible With Discrete Wire Type	Lead Wire
------------------------------------	-----------

Configuration Features

Number of Circuits	3
--------------------	---

Body Features

Primary Product Color	Natural
Primary Product Material	PBT

Contact Features

Mating Pin Diameter	2.29 mm[.09 in]
---------------------	-----------------

Dimensions

Product Length	30.5 mm[1.2 in]
Wire Size	.326 – 5.26 mm ²

Usage Conditions

Operating Temperature Range	-20 – 120 °C[-4 – 248 °F]
-----------------------------	---------------------------

Industry Standards

UL Flammability Rating	UL 94V-0
------------------------	----------



Packaging Features

Packaging Quantity	500
Packaging Method	Bag

Product Compliance

For compliance documentation, visit the product page on TE.com>

EU RoHS Directive 2011/65/EU	Compliant
EU ELV Directive 2000/53/EC	Compliant
China RoHS 2 Directive MIIT Order No 32, 2016	No Restricted Materials Above Threshold
EU REACH Regulation (EC) No. 1907/2006	Current ECHA Candidate List: JUNE 2024 (241) Candidate List Declared Against: JUNE 2024 (241) Does not contain REACH SVHC
Halogen Content	Not Low Halogen - contains Br or Cl > 900 ppm.
Solder Process Capability	Not reviewed for solder process capability

Product Compliance Disclaimer

This information is provided based on reasonable inquiry of our suppliers and represents our current actual knowledge based on the information they provided. This information is subject to change. The part numbers that TE has identified as EU RoHS compliant have a maximum concentration of 0.1% by weight in homogenous materials for lead, hexavalent chromium, mercury, PBB, PBDE, DBP, BBP, DEHP, DIBP, and 0.01% for cadmium, or qualify for an exemption to these limits as defined in the Annexes of Directive 2011/65/EU (RoHS2). Finished electrical and electronic equipment products will be CE marked as required by Directive 2011/65/EU. Components may not be CE marked. Additionally, the part numbers that TE has identified as EU ELV compliant have a maximum concentration of 0.1% by weight in homogenous materials for lead, hexavalent chromium, and mercury, and 0.01% for cadmium, or qualify for an exemption to these limits as defined in the Annexes of Directive 2000/53/EC (ELV). Regarding the REACH Regulation, the information TE provides on SVHC in articles for this part number is based on the latest European Chemicals Agency (ECHA) 'Guidance on requirements for substances in articles' posted at this URL: <https://echa.europa.eu/guidance-documents/guidance-on-reach>

Compatible Parts



TE Part # 316293-3
3.2 CLUSTER BLOCK HSG, LCP TYPE



TE Part # 1217264-1
RCPT 090 CLSTR PIN 22-14

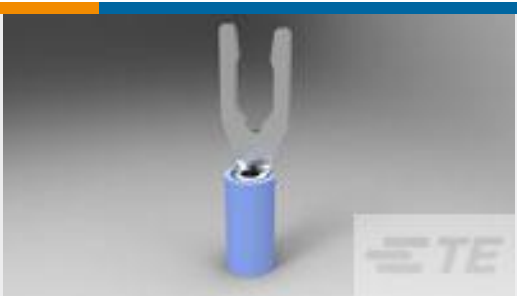


TE Part # 1742964-1
2.29 DIA CLUSTER PIN AMPLV REC 1600-4800



TE Part # 1742981-1
2.29 DIA CLUST PIN AMPLVR REC 400-1600

Customers Also Bought



TE Part #52421-1
TERMINAL,PIDG SPR SPD 16-14 8



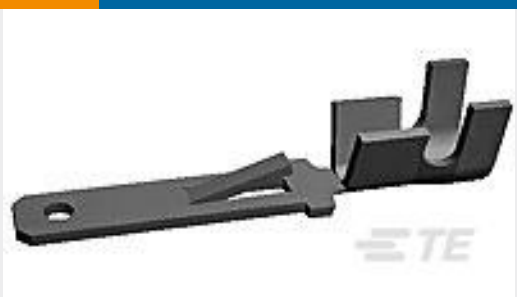
TE Part #62850-1
110 FASTON REC 20-18 AWG TPBR



TE Part #61588-1
RING 22-16 AWG TPBR



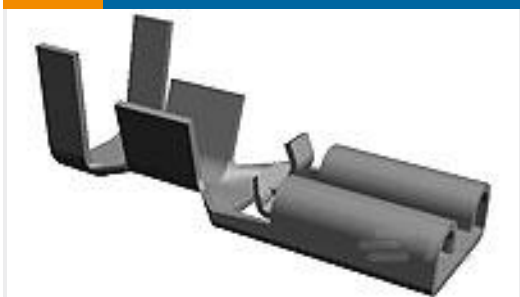
TE Part #63933-1
PL .250 TERMINAL REC 22-18 AWG BR



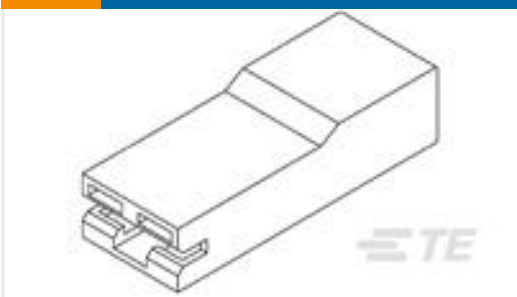
TE Part #62553-1
FF 250 TAB 22-18AWG BR



TE Part #3-180916-0
FF 250 TAB HSG 1P NYLON NAT



TE Part #1217113-1
PL 187 TERMINAL RECEPTACLE 22-18 AWG BR



TE Part #521120-7
PL 250 HOUSING RECEPTACLE NYLON 6/6



TE Part #2232326-2
CLUSTER BLOCK HSG .090 DIA



TE Part #1599105-1
RECEPTACLE CLUSTER PIN .090dia

Documents

Product Drawings

CLUSTER BLOCK HSG .090 DIA

English

CAD Files

3D PDF

3D

Customer View Model

ENG_CVM_CVM_2232327-1_C.2d_dxf.zip

English

Customer View Model

ENG_CVM_CVM_2232327-1_C.3d_igs.zip

English

Customer View Model

ENG_CVM_CVM_2232327-1_C.3d_stp.zip

English

By downloading the CAD file I accept and agree to the Terms and Conditions of use.

Product Specifications



Application Specification

English