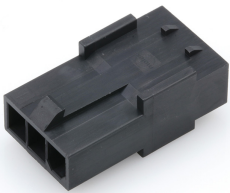




Part Number : [2004711003](#)
Product Description : Mini-Fit Sigma Plug
Housing, 4.20mm Pitch, Single Row, UL 94V-0,
Glow-Wire Capable, 3 Circuits
Series Number : 200471
Status : Active
Product Category : Connector Housings



Documents & Resources

Drawings
[Drawing 2004711003_sd.pdf](#)
[Packaging Design Drawing 2004710001-PK-000.pdf](#)

3D Models and Design Files
[3D Model 2004711003_stp.zip](#)

Specifications
[Application Specification 2131370000-AS-000.pdf](#)
[Product Specification 2029880002-PS-000.pdf](#)
[Product Specification 2131370000-PS-000.pdf](#)
[Test Summary 2131370002-TS-000.pdf](#)

Product Environment Compliance

Compliance

GADSL/IMDS	Not Relevant
China RoHS	
EU ELV	Not Relevant
Low-Halogen Status	Not Low-Halogen per IEC 61249-2-21
REACH SVHC	Not Contained per D(2024)4144-DC (27 June 2024)
EU RoHS	Compliant per EU 2015/863

Multiple Part Product Compliance Statements
- Eu RoHS
- REACH SVHC
- Low-Halogen

Multiple Part Industry Compliance Documents

- IPC 1752A Class C
- IPC 1752A Class D
- Molex Product Compliance Declaration
- IEC-62474
- chemSHERPA (xml)

EU RoHS Certificate of Compliance

Part Details

General

Status	Active
Category	Connector Housings
Series	200471
Description	Mini-Fit Sigma Plug Housing, 4.20mm Pitch, Single Row, UL 94V-0, Glow-Wire Capable, 3 Circuits
Application	Power, Wire-to-Board, Wire-to-Wire
Product Family	Mini-Fit Family Power Connectors
Product Name	Mini-Fit Sigma
UPC	193264446414

Agency

UL	E29179
----	--------

Physical

Circuits (maximum)	3
Color - Resin	Black
Flammability	94V-0
Gender	Plug
Glow-Wire Capable	Yes
Lock to Mating Part	Yes
Material - Resin	Nylon
Net Weight	1.370/g
Number of Rows	1
Packaging Type	Bag
Panel Mount	No

Pitch - Mating Interface	4.20mm
Pitch - Termination Interface	4.20mm
Polarized to Mating Part	Yes
Temperature Range - Operating	-40° to +105°C

Solder Process Data

Lead-Free Process Capability	N/A
------------------------------	-----

Mates With / Use With

Mates with Part(s)

Description	Part Number
Mini-Fit Sigma Receptacle Housing, 4.20mm Pitch, Single Row, Glow-Wire Capable, 3 Circuits	<u>2004531003</u>

Use with Part(s)

Description	Part Number
Mini-Fit Sigma Terminal Position Assurance (TPA) Retainer, 4.20mm Pitch, UL 94V-0, Glow-Wire Capable, 3 Circuits, Natural	<u>1727092003</u>
Mini-Fit TPA2/Sigma Male Crimp Terminals	<u>172765</u>
Mini-Fit TPA2/Sigma Male Crimp Terminals	<u>203070</u>