

Actuator

704.029.5

Distribution by
DigiKey

DigiKey



<https://digikey.eao.com/p/704.029.5>

Your product:



704.029.5 Actuator

FRONT

Front form:	round
Front dimension:	Ø 29 mm
Front bezel colour:	Black
Front bezel material:	Plastic

MOUNTING

Design:	raised
---------	--------

OPERATING-/INDICATION PART

Lens material:	Plastic
Lens colour:	Green
Lens optics:	transparent
Lens illumination:	illuminative
Lens shape:	flush

ELECTRICAL CHARACTERISTICS

Standards:	The switches comply with the "Standards for low-voltage switching devices" DIN EN 60947-1
------------	-------------------------------------------------------------------------------------------

MECHANICAL CHARACTERISTIC

Mechanical lifetime:	≤3 Mio. cycles of operation
Terminal:	Screw terminal
Weight:	0.056 kg

Operating force: 8 N

Operating Travel: ca. 5.8 mm ± 0.2 mm

Switching action: Momentary

AMBIENT CONDITION

Storage temperature: – 40 °C ... + 85 °C

Operating temperature: – 40 °C ... + 55 °C

IP Protection: IP65 front side

OTHER

max. number of switching elements: 3

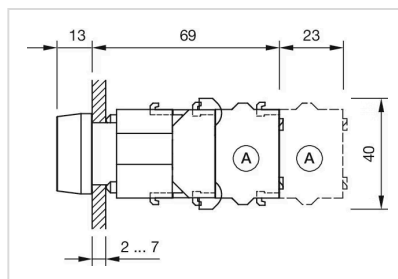
Housing material: Plastic

Hints: Frontring with protective cover to be mounted with a torque of 0.4 Nm onto actuator, Max. 3 switching elements can be clipped on

Housing colour: Grey

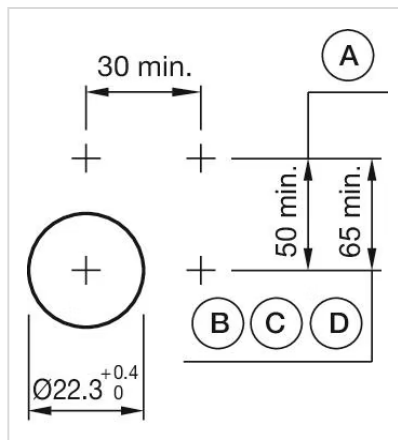
Short Description: Actuator, Ø 29 mm, flush, illuminative, Green, Plastic, transparent, round, Black, Plastic, Momentary, Screw terminal

Dimension drawings:



A = Screw terminal

Mounting cut-outs:



A = Screw terminal
 B = Push-in terminal (PIT)
 C = Plug-in terminal 6.3 mm x 0.8 mm
 D = Double plug-in terminal 6.3 mm x 0.8 mm

Wiring diagrams:

