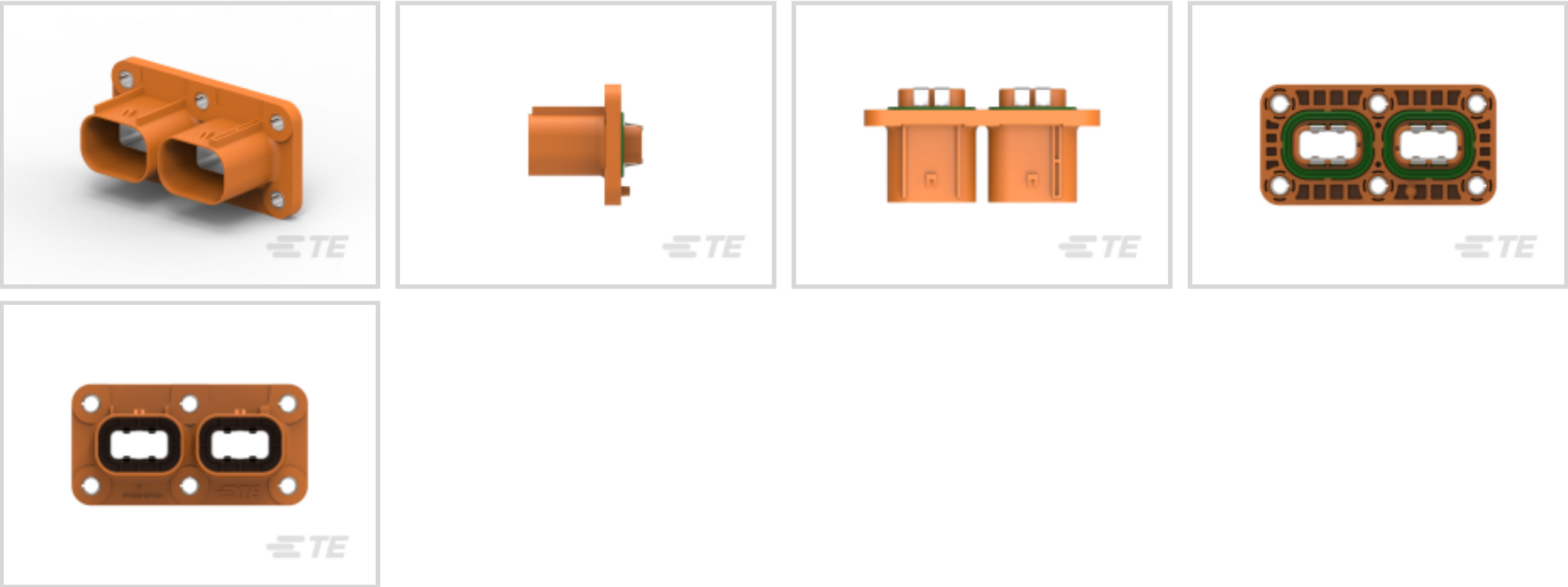




Connectors > PCB Connectors > PCB Headers & Receptacles > Press-Fit & SMT Header



Connector System: **Wire-to-Device**
Number of Positions: **4**
Sealable: **Yes**
PCB Mount Orientation: **Vertical**
Number of Rows: **1**

[All Press-Fit & SMT Header \(26\)](#)

Features

Product Type Features

Mixed & Hybrid Header	Yes
Connector Shape	Rectangular
PCB Connector Assembly Type	PCB Mount Header
Header Type	Fully Shrouded
Connector System	Wire-to-Device
Sealable	Yes
Connector & Contact Terminates To	Printed Circuit Board

Configuration Features

Number of Sections	2
Number of Signal Positions	2
Number of Positions	4
PCB Mount Orientation	Vertical
Number of Rows	1



Electrical Characteristics

Voltage Rating (Max)	600 VDC
----------------------	---------

Body Features

Primary Product Color	Orange
Connector & Keying Code	D, F

Contact Features

Contact Type	Tab
Mating Tab Width	2.8 mm[.11 in]
Mating Tab Thickness	.8 mm[.031 in]
Contact Mating Area Plating Material	Tin

Termination Features

Termination Method to PCB	Through Hole - Press-Fit
---------------------------	--------------------------

Mechanical Attachment

Mounting Holes	With
Mating Retention	With
Mating Alignment	With
PCB Mount Alignment	Without
Panel Mount Feature	Without
Mating Retention Type	Locking Interface

Dimensions

Connector Length	79.3 mm[3.12 in]
Connector Width	40.6 mm[1.59 in]

Usage Conditions

Operating Temperature (Max)	65 °C, 70 °C, 75 °C, 80 °C, 85 °C, 90 °C, 100 °C, 105 °C, 110 °C, 120 °C, 125 °C[149 °F][158 °F][167 °F][176 °F][185 °F][194 °F][212 °F][221 °F][230 °F][248 °F][257 °F]
Operating Temperature Range	-40 – 125 °C[-40 – 257 °F]

Operation/Application

Shielded	Yes
Circuit Application	Signal

Packaging Features

--	--



Packaging Quantity	1
Packaging Method	Package

Product Compliance

For compliance documentation, visit the product page on TE.com>

EU RoHS Directive 2011/65/EU	Compliant
EU ELV Directive 2000/53/EC	Compliant
China RoHS 2 Directive MIIT Order No 32, 2016	No Restricted Materials Above Threshold
EU REACH Regulation (EC) No. 1907/2006	Current ECHA Candidate List: JUNE 2024 (241) Candidate List Declared Against: JUNE 2024 (241) Does not contain REACH SVHC
Halogen Content	Low Halogen - Br, Cl, F, I < 900 ppm per homogenous material. Also BFR/CFR/PVC Free
Solder Process Capability	Not reviewed for solder process capability

Product Compliance Disclaimer

This information is provided based on reasonable inquiry of our suppliers and represents our current actual knowledge based on the information they provided. This information is subject to change. The part numbers that TE has identified as EU RoHS compliant have a maximum concentration of 0.1% by weight in homogenous materials for lead, hexavalent chromium, mercury, PBB, PBDE, DBP, BBP, DEHP, DIBP, and 0.01% for cadmium, or qualify for an exemption to these limits as defined in the Annexes of Directive 2011/65/EU (RoHS2). Finished electrical and electronic equipment products will be CE marked as required by Directive 2011/65/EU. Components may not be CE marked. Additionally, the part numbers that TE has identified as EU ELV compliant have a maximum concentration of 0.1% by weight in homogenous materials for lead, hexavalent chromium, and mercury, and 0.01% for cadmium, or qualify for an exemption to these limits as defined in the Annexes of Directive 2000/53/EC (ELV). Regarding the REACH Regulation, the information TE provides on SVHC in articles for this part number is based on the latest European Chemicals Agency (ECHA) 'Guidance on requirements for substances in articles' posted at this URL: <https://echa.europa.eu/guidance-documents/guidance-on-reach>

Compatible Parts

 TE Part # 2103245-4 Inner Housing, Split Hdr, Key D, HVA280	 TE Part # 2103245-6 Inner Housing, Split Hdr, Key F, HVA280	 TE Part # 2103321-4 3p Inner Hsg, Split Hdr, Key D, HVA280	 TE Part # 2103321-6 3p Inner Hsg, Split Hdr, Key F, HVA280
---	---	--	--

Also in the Series | HVA 280



Automotive Connector Caps & Covers (5)



Automotive Connector EMC Shielding (15)



Automotive Housings(71)



Connector Seals & Cavity Plugs(8)



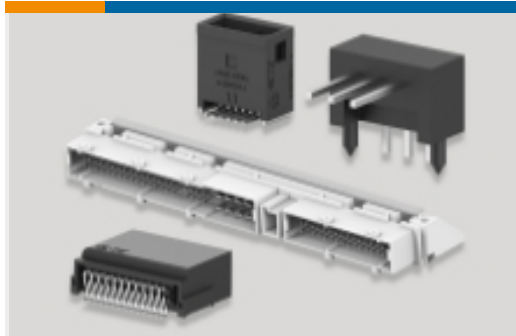
Electric, Hybrid & Fuel Cell Cable Assemblies(21)



High Voltage Wire Processing Equipment(7)



Other Automotive Connector Accessories(38)

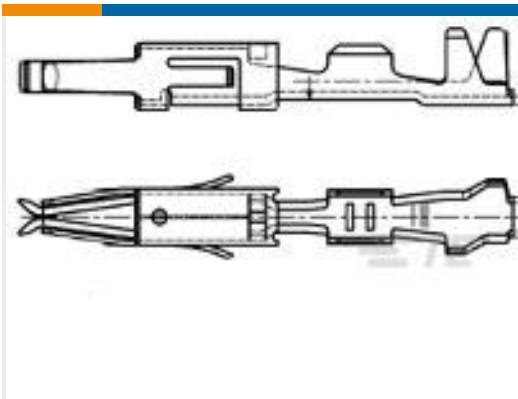


PCB Headers & Receptacles(32)

Customers Also Bought



TE Part #1-2141227-1
2POS,PIN DIA 8.0,PIN HSG,ASSY,SLD



TE Part #962875-5
MT2 REC 1.6 Contact SWS Au



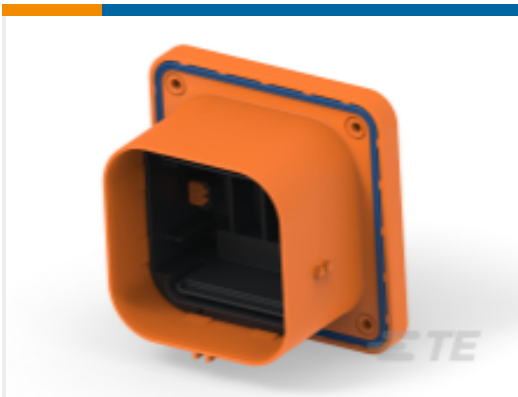
TE Part #2103245-5
Inner Housing, Split Hdr, Key E, HVA280



TE Part #1587733-1
SHIPPING CAP, CAP, HVA280-3PM



TE Part #2103245-1
Inner Housing, Split Hdr, Key A, HVA280



TE Part #2307434-6
RECEPTACLE ASSEMBLY V0_MSD; 630A



TE Part #2310541-6
SPLIT HEADER ASSY, KEY F, HVA280, V0



TE Part #2387305-1
16POS,TAB0.5X0.4,HDR ASSY,90DEG, COD A



TE Part #2387305-2
16POS,TAB0.5X0.4,HDR ASSY,90DEG, COD B



TE Part #1-2468492-1
Plug Assembly, 350A, MSD

Documents



Product Drawings

HVA280 2 Bay Header Sub-Assy, KEY D, F

English

CAD Files

Customer View Model

ENG_CVM_CVM_2103346-2_A1.3d_stp.zip

English

Customer View Model

ENG_CVM_CVM_2103346-2_A1.2d_dxf.zip

English

Customer View Model

ENG_CVM_CVM_2103346-2_A1.3d_igs.zip

English

3D PDF

3D

By downloading the CAD file I accept and agree to the [Terms and Conditions](#) of use.

Instruction Sheets

Instruction Sheet (U.S.)

English