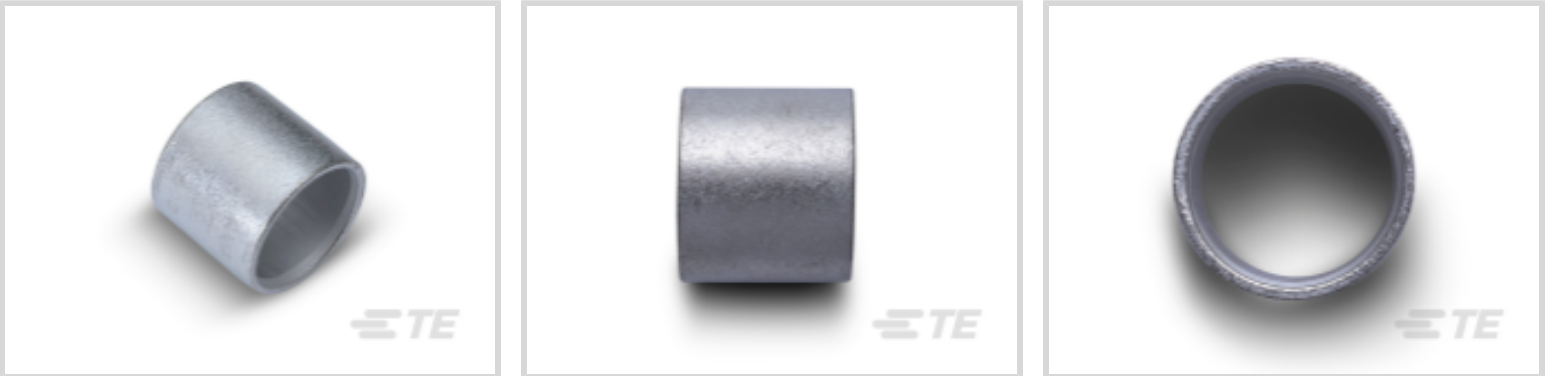




Terminals & Splices > Splices > AMPOWER Parallel Splice



Splice Type: **Parallel Splice**  
Sealable: **No**  
Barrel Inside Diameter: **19.51 mm [.768 in]**  
Wire Size: **275000 – 325000 CMA**

[All AMPOWER Parallel Splice \(14\)](#)

Features

Product Type Features

Splice Accessory Type	Splice
Splice Type	Parallel Splice
Sealable	No
Compatible With Discrete Wire Type	Stranded

Configuration Features

Splice Configuration	Single to Multiple
Compatible With Wire & Cable Type	Discrete Wire

Body Features

Product Weight	28.47 g
Primary Product Color	Gray

Contact Features

	150 μin
Terminal Plating Material	Tin
Contact Base Material	Copper
Barrel Type	Closed

Termination Features

Termination Method to Wire & Cable	Crimp
------------------------------------	-------



Mechanical Attachment

Wire Insulation Support	Without
-------------------------	---------

Dimensions

Barrel Inside Diameter	19.51 mm[.768 in]
Wire Size	275000 – 325000 CMA
Product Length	22.61 mm[.89 in]

Usage Conditions

Insulation Option	Uninsulated
-------------------	-------------

Operation/Application

Compatible With Wire Base Material	Copper
------------------------------------	--------

Industry Standards

Compatible With Agency/Standards Products	UL
Compatible With Approved Standards Products	UL E13288

Packaging Features

Packaging Quantity	25
Packaging Method	Box

Product Compliance

For compliance documentation, visit the product page on TE.com>

EU RoHS Directive 2011/65/EU	Compliant
EU ELV Directive 2000/53/EC	Compliant
China RoHS 2 Directive MIIT Order No 32, 2016	No Restricted Materials Above Threshold
EU REACH Regulation (EC) No. 1907/2006	Current ECHA Candidate List: JUNE 2024 (241) Candidate List Declared Against: JUNE 2024 (241) Does not contain REACH SVHC
Halogen Content	Low Halogen - Br, Cl, F, I < 900 ppm per homogenous material. Also BFR/CFR/PVC Free
Solder Process Capability	Not applicable for solder process capability

Product Compliance Disclaimer

This information is provided based on reasonable inquiry of our suppliers and represents our current actual knowledge based on the information they provided. This information is subject to change. The part numbers that TE has identified as EU RoHS compliant have a maximum concentration of 0.1% by weight in homogenous materials for lead, hexavalent



chromium, mercury, PBB, PBDE, DBP, BBP, DEHP, DIBP, and 0.01% for cadmium, or qualify for an exemption to these limits as defined in the Annexes of Directive 2011/65/EU (RoHS2). Finished electrical and electronic equipment products will be CE marked as required by Directive 2011/65/EU. Components may not be CE marked. Additionally, the part numbers that TE has identified as EU ELV compliant have a maximum concentration of 0.1% by weight in homogenous materials for lead, hexavalent chromium, and mercury, and 0.01% for cadmium, or qualify for an exemption to these limits as defined in the Annexes of Directive 2000/53/EC (ELV). Regarding the REACH Regulation, the information TE provides on SVHC in articles for this part number is based on the latest European Chemicals Agency (ECHA) 'Guidance on requirements for substances in articles' posted at this URL: <https://echa.europa.eu/guidance-documents/guidance-on-reach>

## Compatible Parts



TE Part # 46752-2

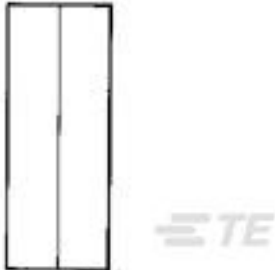
HYP8 AMPPOWER 300MCM DIE SET

## Customers Also Bought



TE Part #36923

TERMINAL,SOLIS R 2/0 3/8



TE Part #35187

SPLICE,SOLIS PARA 2



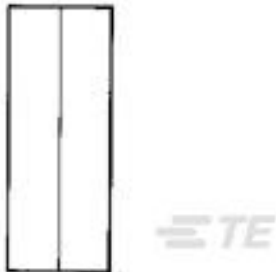
TE Part #324449

SPLICE,AMPOWER PARA 350MCM



TE Part #324462

SPLICE,AMPOWER BUTT 250MCM



TE Part #36909

SPLICE,SOLIS PARA 3/0

## Documents

### Product Drawings

SPLICE,AMPOWER PARA 300MCM

English

### CAD Files

Customer View Model

ENG\_CVM\_324448\_F.3d\_igs.zip

English



Customer View Model

[ENG\\_CVM\\_324448\\_F.3d\\_stp.zip](#)

English

Customer View Model

[ENG\\_CVM\\_324448\\_F.2d\\_dxf.zip](#)

English

3D PDF

English

By downloading the CAD file I accept and agree to the [Terms and Conditions](#) of use.

Datasheets & Catalog Pages

[AMPOWER Terminals and Splices Flyer](#)

English

Agency Approvals

[UL Report](#)

English