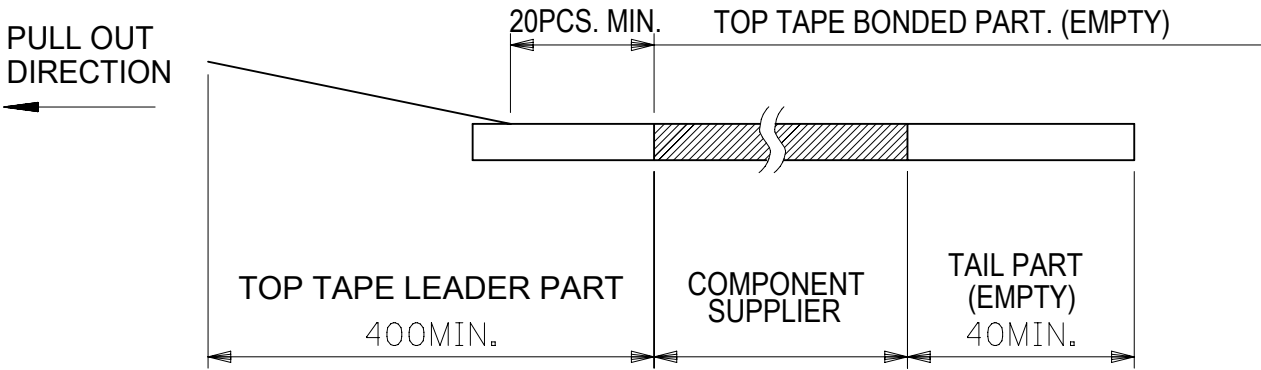


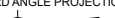
NOTES

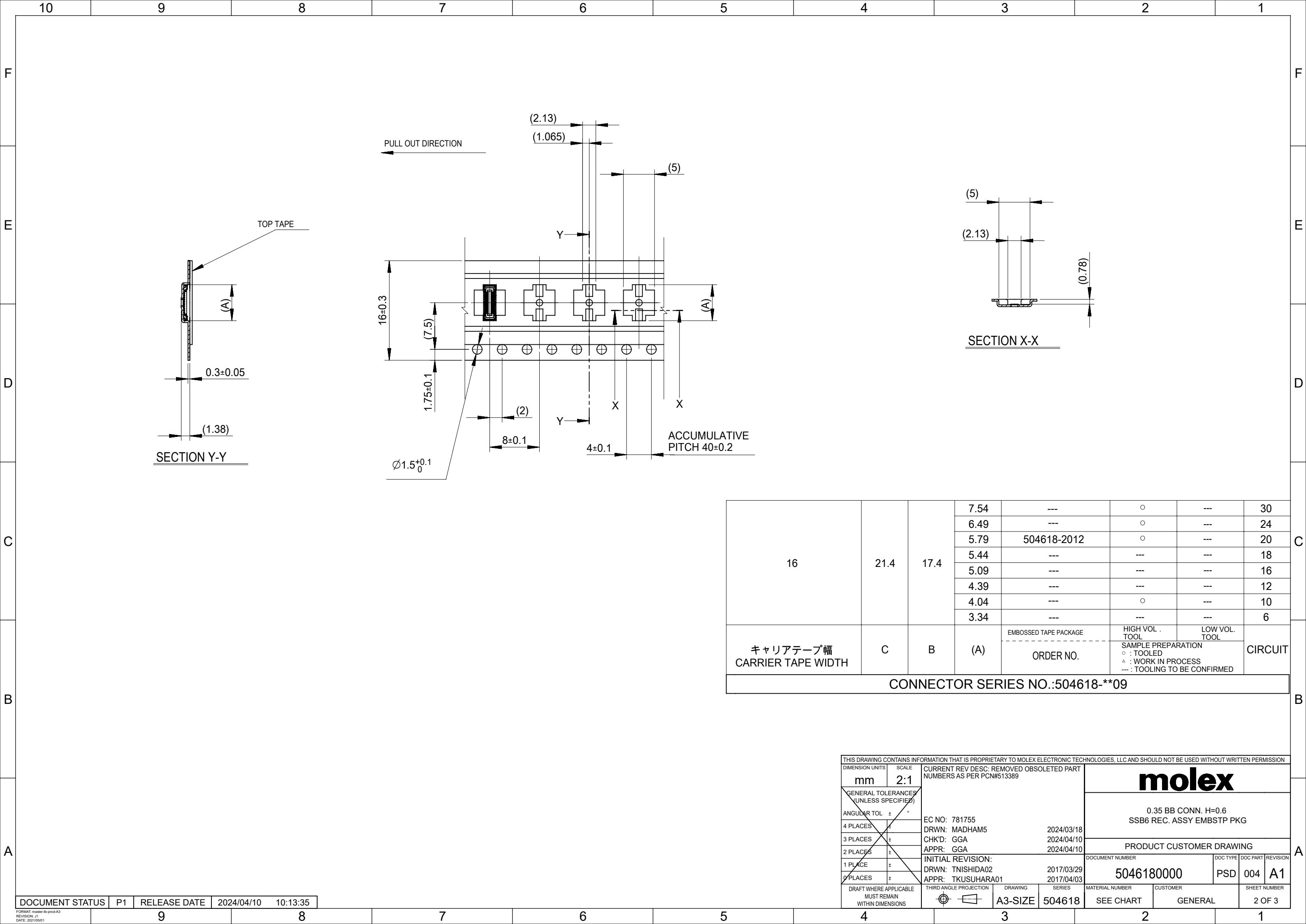
1. DETAIL DIMENSIONS, SEE PRODUCT DRAWING.
2. NUMBER OF CONNECTORS : 8000PCS/REEL
3. LEAD TAPE LENGTH

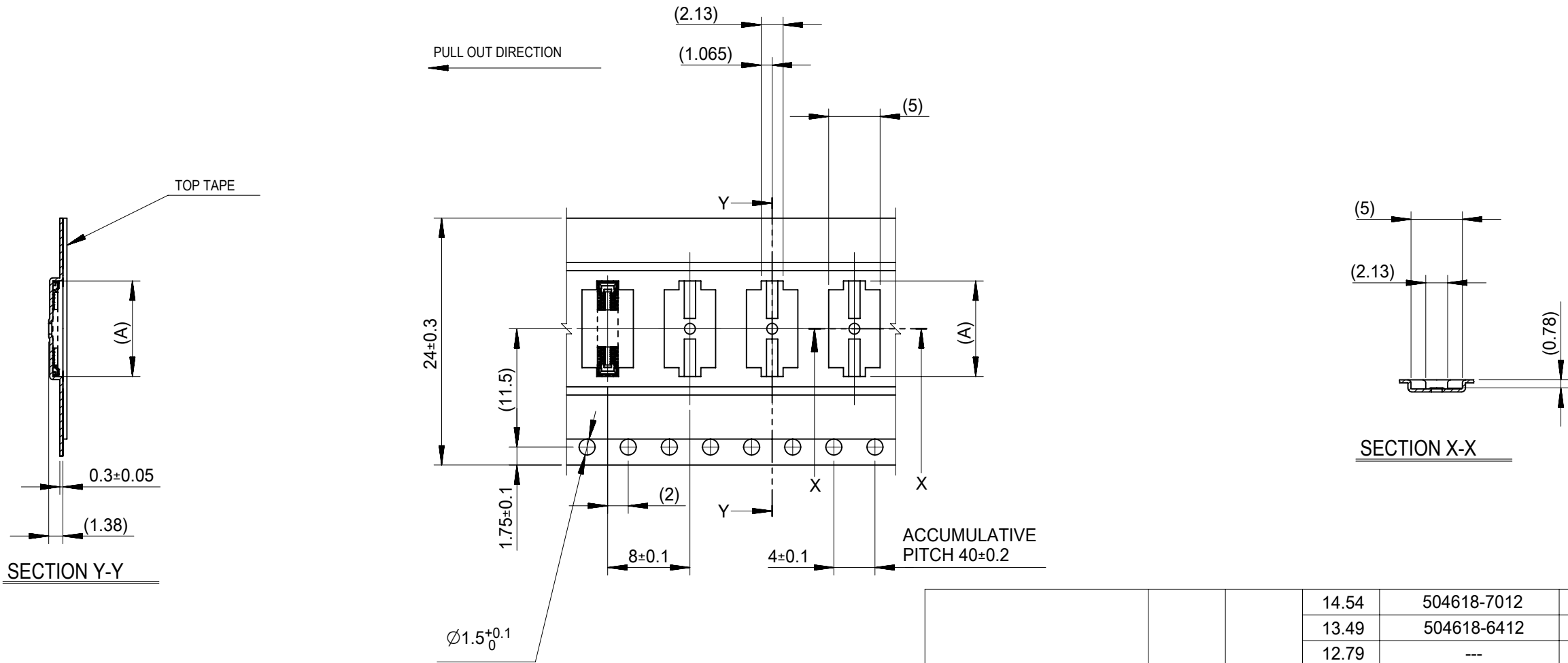


4. TOP TAPE PEEL FORCE IS DEFINED BY IEC60286-3.
5. MATERIAL
CARRIER TAPE : POLYSTYRENE
TOP TAPE : PET , OTHER
REEL : POLYSTYRENE (PS) <RECYCLE MATERIAL CONTAINED>

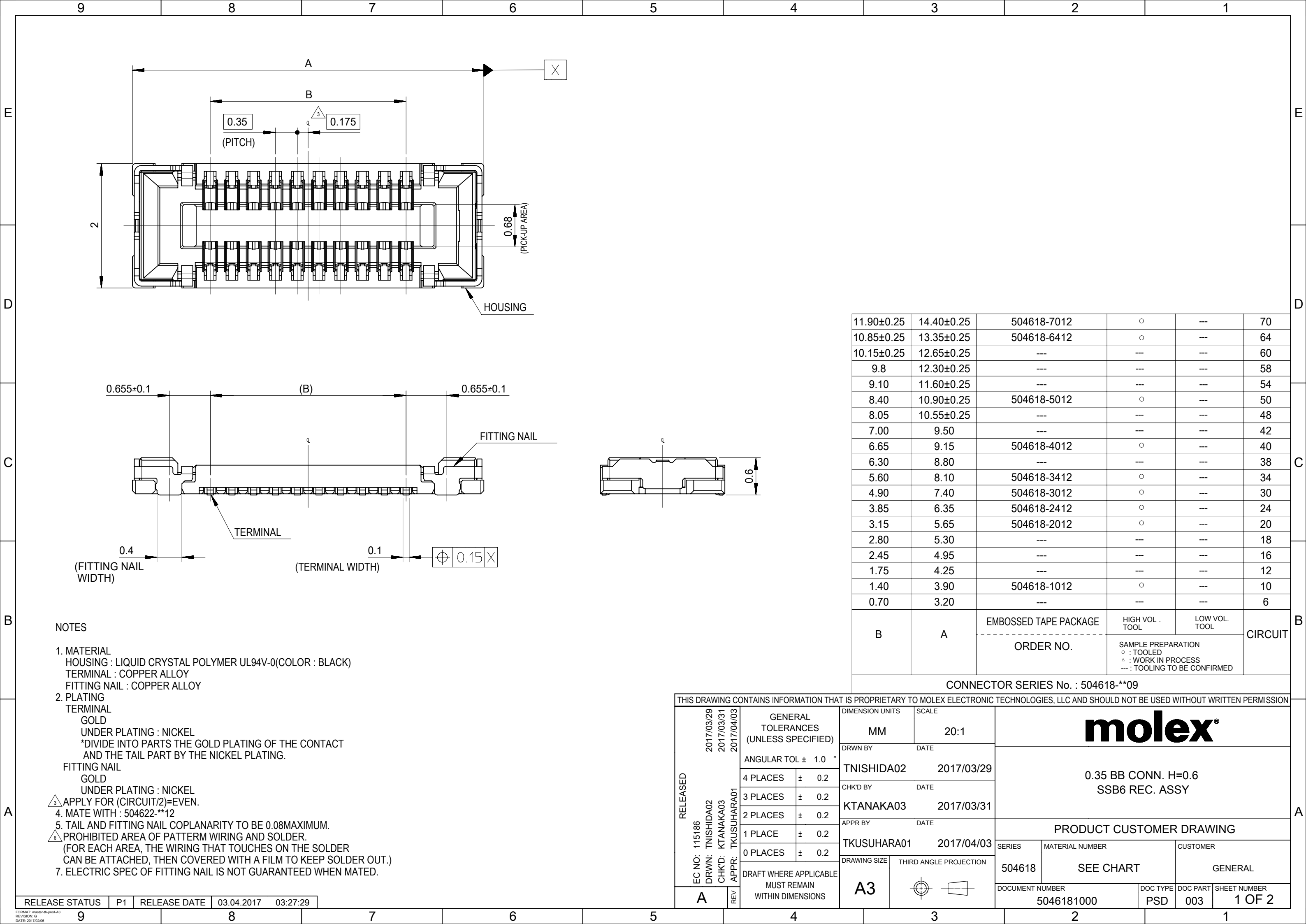
MODEL NO. 504618-**12

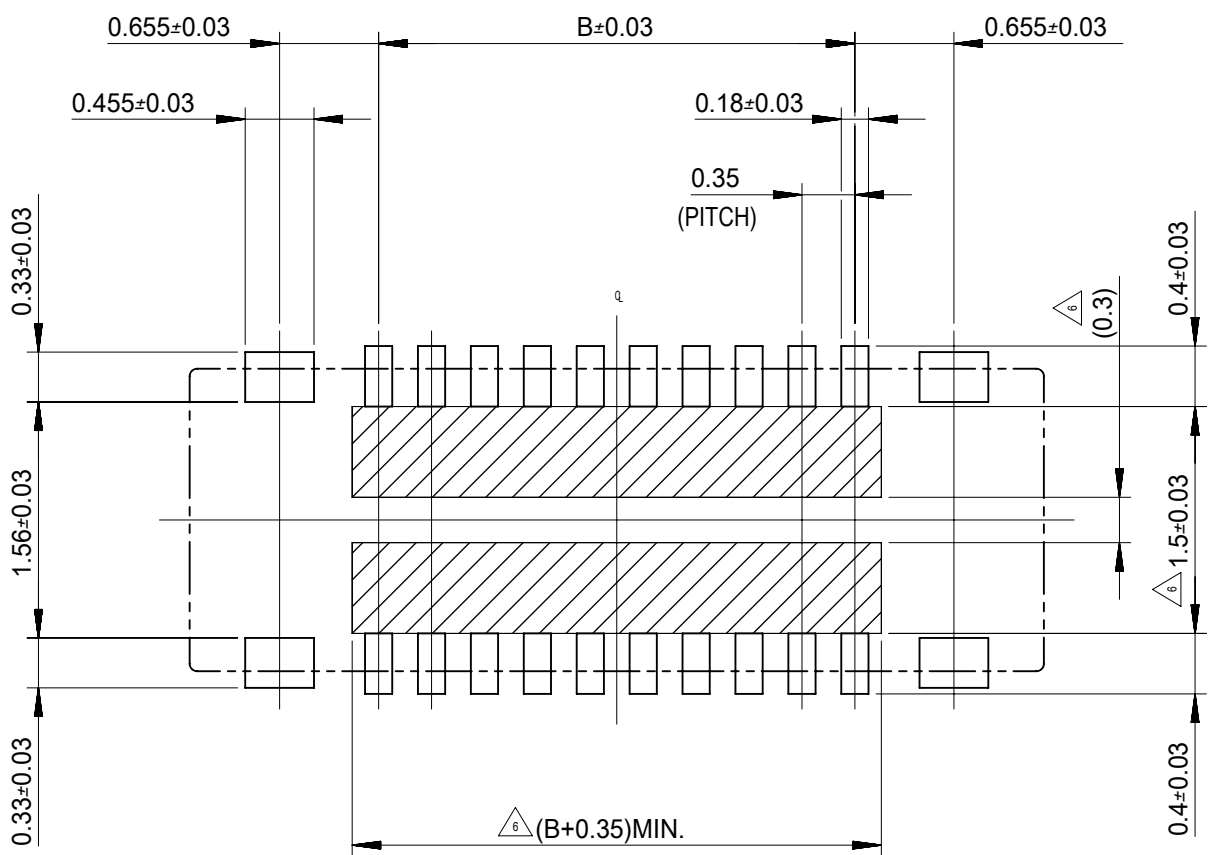
THIS DRAWING CONTAINS INFORMATION THAT IS PROPRIETARY TO MOLEX ELECTRONIC TECHNOLOGIES, LLC AND SHOULD NOT BE USED WITHOUT WRITTEN PERMISSION													
DIMENSION UNITS		SCALE		CURRENT REV DESC: REMOVED OBSOLETE PART NUMBERS AS PER PCN#513389									
mm		1:5		<div>molex</div> <div>0.35 BB CONN. H=0.6</div> <div>SSB6 REC. ASSY EMBSTP PKG</div> <div>PRODUCT CUSTOMER DRAWING</div> <div>5046180000</div> <div>PSD004A1</div> <div>SEE CHARTGENERAL</div> <div>1 OF 3</div>									
GENERAL TOLERANCES (UNLESS SPECIFIED)													
ANGULAR TOL ± °													
4 PLACES ±													
3 PLACES ±													
2 PLACES ±													
1 PLACE ±													
0 PLACES ±													
DRAFT WHERE APPLICABLE MUST REMAIN WITHIN DIMENSIONS				EC NO: 781755		DRWN: MADHAM5		2024/03/18					
				CHK'D: GGA		2024/04/10							
THIRD ANGLE PROJECTION				APPR: GGA		2024/04/10							
INITIAL REVISION:				DOCUMENT NUMBER		DOC TYPE		DOC PART		REVISION			
DRWN: TNISHIDA02				2017/03/29		5046180000		PSD		004		A1	
APPR: TKUSUHA01				2017/04/03									
				DRAWING		SERIES		MATERIAL NUMBER		CUSTOMER		SHEET NUMBER	
				A3-SIZE		504618		SEE CHART		GENERAL		1 OF 3	



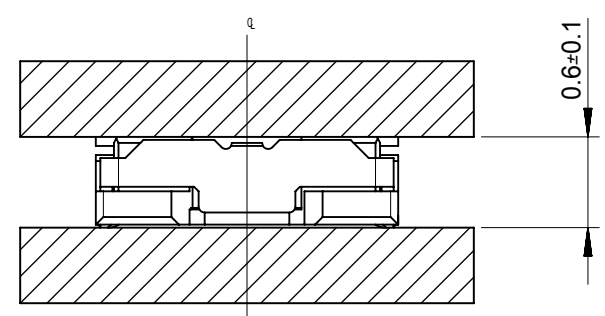


24	29.4	25.4	14.54	504618-7012	○	---	70
			13.49	504618-6412	○	---	64
			12.79	---	---	---	60
			12.44	---	---	---	58
			11.74	---	---	---	54
			11.04	---	○	---	50
			10.69	---	---	---	48
			9.46	---	---	---	42
			9.29	504618-4012	○	---	40
			8.94	---	---	---	38
			8.24	---	○	---	34
キャリアテープ幅 CARRIER TAPE WIDTH	C	B	(A)	EMBOSSD TAPE PACKAGE ORDER NO.	HIGH VOL . TOOL	LOW VOL. TOOL	CIRCUIT
			SAMPLE PREPARATION ○ : TOOLED △ : WORK IN PROCESS --- : TOOLING TO BE CONFIRMED				
CONNECTOR SERIES NO.:504618-*09							

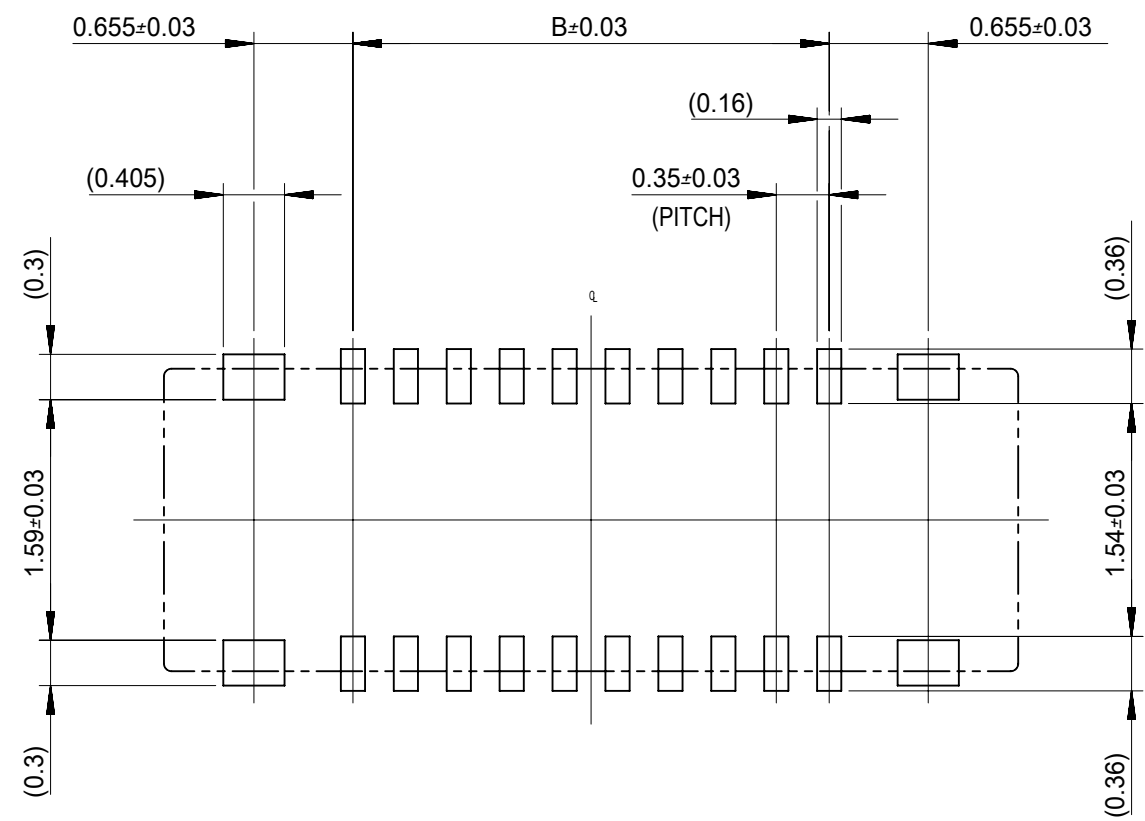




RECOMMENDED P.W.BOARD PATTERN LAYOUT(REFERENCE)



MATED CONDITION



RECOMMENDED METAL MASK LAYOUT(REFERENCE)

RECOMMENDED THICKNESS OF METAL MASK : t=0.08mm
RECOMMENDED OPEN APERTURE RATIO OF METAL MASK : 80%

THIS DRAWING CONTAINS INFORMATION THAT IS PROPRIETARY TO MOLEX ELECTRONIC TECHNOLOGIES, LLC AND SHOULD NOT BE USED WITHOUT WRITTEN PERMISSION															
RELEASED	EC NO: 115186 DRWN: TNISHIDA02 CHK'D: KTANAKA03 APPR: TKUSUHARA01	2017/03/29 2017/03/31 2017/04/03	GENERAL TOLERANCES (UNLESS SPECIFIED)		DIMENSION UNITS		SCALE		<div>molex®</div> <div>0.35 BB CONN. H=0.6 SSB6 REC. ASSY</div>						
					MM		20:1								
			ANGULAR TOL ± 1.0 °		DRWN BY		DATE		<div>PRODUCT CUSTOMER DRAWING</div> <div>SERIES: 504618 MATERIAL NUMBER: SEE CHART CUSTOMER: GENERAL</div> <div>DOCUMENT NUMBER: 5046181000 DOC TYPE: PSD DOC PART: 003 SHEET NUMBER: 2 OF 2</div>						
					TNISHIDA02		2017/03/29								
			4 PLACES ± 0.2		CHK'D BY		DATE								
			3 PLACES ± 0.2		KTANAKA03		2017/03/31								
			2 PLACES ± 0.2		APPR BY		DATE								
			1 PLACE ± 0.2		TKUSUHARA01		2017/04/03								
			0 PLACES ± 0.2		DRAWING SIZE		THIRD ANGLE PROJECTION								
			DRAFT WHERE APPLICABLE MUST REMAIN WITHIN DIMENSIONS		A3										