

# Actuator

51-  
456.036F

Distribution by  
DigiKey

**DigiKey**



<https://digikey.eao.com/p/51-456.036F>

Your product:

---



## 51-456.036F Actuator

### MOUNTING

**Design:** flush

### OPERATING-/INDICATION PART

**Lens illumination:** illuminative

### ELECTRICAL CHARACTERISTICS

**Contacts:** 1 NC

**Electric strength:** 2500 VAC, 50 Hz, 1 min. between all terminals and earth, according to IEC 61058-1, part 15

**Switching voltage and switching current:** 100 mA at 42 VAC/VDC

### MECHANICAL CHARACTERISTIC

**Tightening torque:** Fixing nut max. 0.5 Nm

**Mechanical lifetime:** 5 Mio. cycles of operation

**Operating force:** 4 N ... 6 N

**Weight:** 0.016 kg

**Switching action:** Momentary

**Switching system:** This low-level switching element was designed for switching low powers in electronic circuits. The mechanism assures reliable switching of loads ranging from a few  $\mu\text{A}/\mu\text{V}$  up to 100 mA/ 42 VAC/DC. Single-break momentary contact, as normally open or normally closed with 4 independent points of contact. 2 momentary contacts per switching element; combination of normally open and normally closed is possible. Special features are the long life, extremely short rebound time and stable contact resistance.

**Contact material:** Gold

**Operating Travel:**

**Terminal:** Universal terminal, 2 x 0.5 mm

<b>Switching system:</b>	Low-level element
--------------------------	-------------------

## AMBIENT CONDITION

**Operating temperature:** – 25 °C ... + 55 °C, mounted as a block, make sure the heat can escape freely

**Storage temperature:**  $-40\text{ }^{\circ}\text{C} \dots +85\text{ }^{\circ}\text{C}$

**Shock resistance:** 15 g for 11 ms, as per DIN / EN 60512-4-3, DIN / EN 60068-2-27 (Single impacts, semi-sinusoidal)

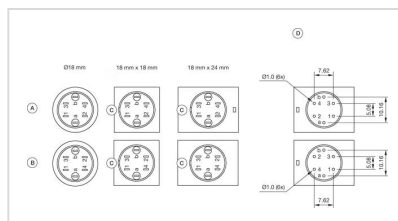
**IP front protection:** IP65, according to DIN EN 60529

**OTHER**

**Short Description:** Actuator, illuminative, 1 NC, Momentary, Universal terminal, 2 x 0.5 mm, IP65, according to DIN EN 60529

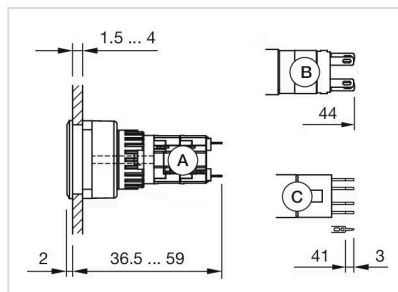
**Housing colour:** Black

**Component layouts:**



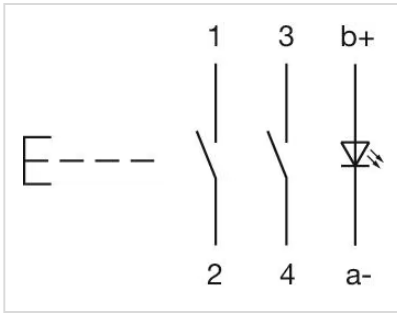
A = Universal terminal (rear side)  
B = Plug-in terminal (rear side)  
C = Anti twist device  
D = Drilling plan

**Dimension drawings:**



A = Solder terminal  
B = Plug-in terminal 2.8 mm x 0.5 mm  
C = Universal terminal 2.0 mm x 0.5 mm

**Wiring diagrams:**



**Mounting cut-outs:**

