

# Actuator

51-  
483.036F

Distribution by  
DigiKey

**DigiKey**



<https://digikey.eao.com/p/51-483.036F>

Your product:

---



## 51-483.036F Actuator

### MOUNTING

**Design:** flush

### OPERATING-/INDICATION PART

**Lens illumination:** illuminative

### ELECTRICAL CHARACTERISTICS

**Switching voltage and switching current:** 100 mA at 42 VAC/VDC

**Contacts:** 1 NC / 1 NO

**Electric strength:** 2500 VAC, 50 Hz, 1 min. between all terminals and earth, according to IEC 61058-1, part 15

### MECHANICAL CHARACTERISTIC

**Contact material:** Gold

**Operating force:** 4 N ... 6 N

**Switching system:** Low-level element

**Switching system:** This low-level switching element was designed for switching low powers in electronic circuits. The mechanism assures reliable switching of loads ranging from a few  $\mu\text{A}/\mu\text{V}$  up to 100 mA/ 42 VAC/DC.  
Single-break momentary contact, as normally open or normally closed with 4 independent points of contact. 2 momentary contacts per switching element; combination of normally open and normally closed is possible.  
Special features are the long life, extremely short rebound time and stable contact resistance.

**Terminal:** Universal terminal, 2 x 0.5 mm

**Weight:** 0.006 kg

**Operating Travel:** 3 mm

**Mechanical lifetime:**

1 Mio. cycles of operation

**Tightening torque:** Fixing nut max. 0.5 Nm

**Switching action:** Maintained

## AMBIENT CONDITION

**Shock resistance:** 15 g for 11 ms, as per DIN / EN 60512-4-3, DIN / EN 60068-2-27 (Single impacts, semi-sinusoidal)

**IP front protection:** IP65, according to DIN EN 60529

**Storage temperature:** – 40 °C ... + 85 °C

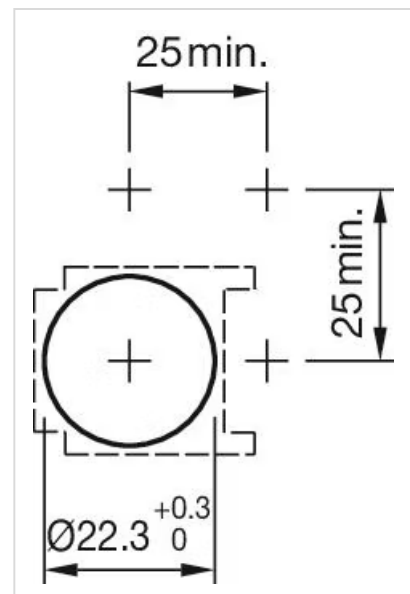
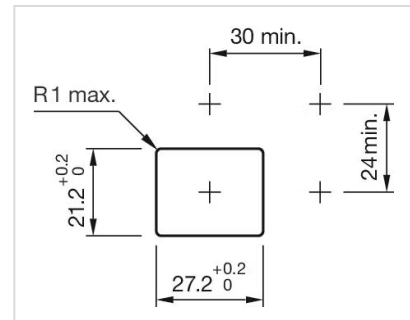
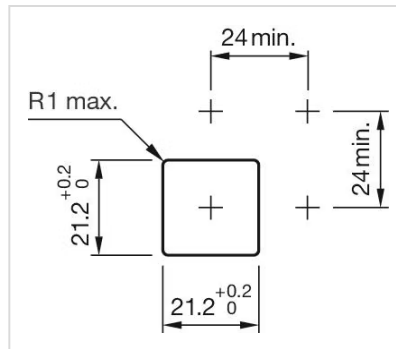
**Operating temperature:** – 25 °C ... + 55 °C, mounted as a block, make sure the heat can escape freely

## OTHER

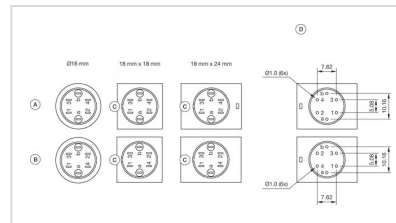
**Housing colour:** Black

**Short Description:** Actuator, illuminative, 1 NC / 1 NO, Maintained, Universal terminal, 2 x 0.5 mm, IP65, according to DIN EN 60529

**Mounting cut-outs:**

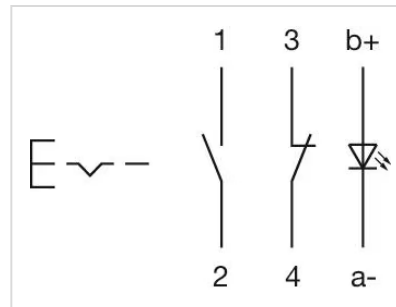


**Component layouts:**

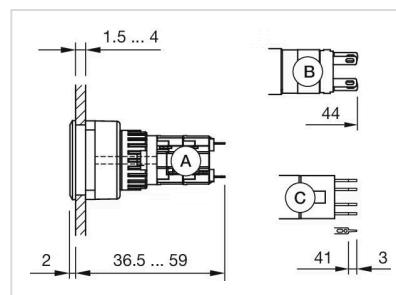


A = Universal terminal (rear side)  
B = Plug-in terminal (rear side)  
C = Anti twist device  
D = Drilling plan

**Wiring diagrams:**



**Dimension drawings:**



A = Solder terminal  
B = Plug-in terminal 2.8 mm x 0.5 mm  
C = Universal terminal 2.0 mm x 0.5 mm