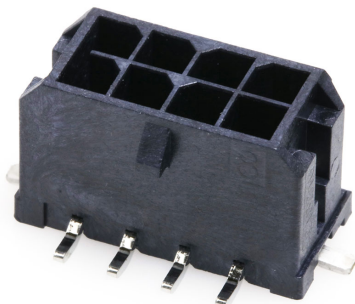




**Part Number :** [2182160620](#)  
**Product Description :** Micro-Fit+ Vertical Header, Surface Mount, 3.00mm Pitch, Dual Row, 6 Circuits, Tin (Sn) Plating, Glow-Wire Capable, Solder Nail, Black, Tape and Reel  
**Series Number :** 218216  
**Status :** Active  
**Product Category :** PCB Headers and Receptacles



Documents & Resources

**Drawings**  
[Drawing 2182160620\\_sd.pdf](#)  
[Packaging Design Drawing 2182160001-PK-000.pdf](#)

**3D Models and Design Files**  
[3D Model 2182160620\\_stp.zip](#)

**Specifications**  
[Application Specification 2064600001-AS-000.pdf](#)  
[Product Specification 2064600000-PS-000.pdf](#)  
[Test Summary 2064600000-TS-000.pdf](#)  
[Test Summary 2064600001-TS-000.pdf](#)

Product Environment Compliance

Compliance

|                    |   |
|--------------------|---|
| GADSL/IMDS         | Not Relevant                                    |
| China RoHS         |   |
| EU ELV             | Not Relevant                                    |
| Low-Halogen Status | Low-Halogen per IEC 61249-2-21                  |
| REACH SVHC         | Not Contained per D(2024)4144-DC (27 June 2024) |
| EU RoHS            | Compliant per EU 2015/863                       |

Multiple Part Product Compliance Statements  
- Eu RoHS  
- REACH SVHC  
- Low-Halogen

## Multiple Part Industry Compliance Documents

- IPC 1752A Class C
- IPC 1752A Class D
- Molex Product Compliance Declaration
- IEC-62474
- chemSHERPA (xml)

## EU RoHS Certificate of Compliance

---

### Part Details

#### General

|                |   |
|----------------|---|
| Status         | Active  |
| Category       | PCB Headers and Receptacles   |
| Series         | 218216  |
| Description    | Micro-Fit+ Vertical Header, Surface Mount, 3.00mm Pitch, Dual Row, 6 Circuits, Tin (Sn) Plating, Glow-Wire Capable, Solder Nail, Black, Tape and Reel |
| Application    | Power, Wire-to-Board  |
| Component Type | PCB Header  |
| Product Family | Micro-Fit+ Connector System   |
| Product Name   | Micro-Fit+  |
| UPC            | 195842883208  |

#### Electrical

|                               |                  |
|-------------------------------|------------------|
| Current - Maximum per Contact | 12.5A            |
| Voltage - Maximum             | 600V AC (RMS)/DC |

#### Physical

|                                |       |
|--------------------------------|-------|
| Breakaway                      | No    |
| Circuits (Loaded)              | 6     |
| Circuits (maximum)             | 6     |
| Color - Resin                  | Black |
| Durability (mating cycles max) | 25    |
| First Mate / Last Break        | No    |
| Glow-Wire Capable              | Yes   |
| Keying to Mating Part          | None  |

|                                |                        |
|--------------------------------|------------------------|
| Lock to Mating Part            | Yes                    |
| Material - Metal               | High Copper Alloy      |
| Material - Plating Mating      | Matte Tin              |
| Material - Plating Termination | Matte Tin              |
| Material - Resin               | Liquid Crystal Polymer |
| Net Weight                     | 1.000/g                |
| Number of Rows                 | 2                      |
| Orientation                    | Vertical               |
| Packaging Type                 | Embossed Tape on Reel  |
| PCB Retention                  | Yes                    |
| Pitch - Mating Interface       | 3.00mm                 |
| Pitch - Termination Interface  | 3.00mm                 |
| Polarized to Mating Part       | Yes                    |
| Polarized to PCB               | Yes                    |
| Shrouded                       | Yes                    |
| Temperature Range - Operating  | -40° to +125°C         |
| Termination Interface Style    | Surface Mount          |

---

## Mates With / Use With

### Mates with Part(s)

| Description                             | Part Number   |
|---|---------------|
| Micro-Fit+ Dual Row Receptacle Housings | <u>206461</u> |