

Printview: Female connector; with snap-in mounting feet; 12-pole; pin spacing 7.5 mm / 0.295 in; with 209-137 mounting adapter also for DIN 35 rail; codable; with 2 locking latches; Plate thickness 0.6x1.2 mm; Fixing holes 3.5 mm Ø - Item No.: 231-212/008-000

**WAGO**® online catalog / eShop

**Female connector; with snap-in mounting feet; 12-pole; pin spacing 7.5 mm / 0.295 in; with 209-137 mounting adapter also for DIN 35 rail; codable; with 2 locking latches; Plate thickness 0.6x1.2 mm; Fixing holes 3.5 mm Ø**

Item No.: 231-212/008-000



Female connector; with snap-in mounting feet; 12-pole; pin spacing 7.5 mm / 0.295 in; with 209-137 mounting adapter also for DIN 35 rail; codable; with 2 locking latches; Plate thickness 0.6x1.2 mm; Fixing holes 3.5 mm Ø

## Marking

RoHS ✓  
Compliant

## Business data

|                      |                 |
|----------------------|-----------------|
| Supplier             | WAGO            |
| Item no.             | 231-212/008-000 |
| GTIN / EAN           | 4044918374934   |
| Content              | 1               |
| Order amount         | 25              |
| Customer item number |                 |

## Notes

Universal connection for all conductor typesEasy cable pre-assembly and on-unit wiring via vertical and horizontal  
CAGE CLAMP® actuationIntegrated test portsCoding option available

## Technical data

### Miscellaneous

|                                   |                     |
|-----------------------------------|---------------------|
| No. of Poles                      | 12                  |
| Pin Spacing                       | 7.5 mm / 0.295 in % |
| Total number of connection points | 12                  |
| Total number of potentials        | 12                  |
| Color                             | gray                |

Printview: Female connector; with snap-in mounting feet; 12-pole; pin spacing 7.5 mm / 0.295 in; with 209-137 mounting adapter also for DIN 35 rail; codable; with 2 locking latches; Plate thickness 0.6x1.2 mm; Fixing holes 3.5 mm Ø - Item No.: 231-212/008-000

| Technical data  |  |
|---|--|
| <i>Ratings according to 1</i>                                 | <i>IEC/EN 60664-1</i>                              |
| <i>Overvoltage category EN 1</i>                              | <i>III</i>   |
| <i>Pollution degree (1)</i>                                   | <i>2</i>   |
| <i>Rated voltage EN (1) [V]</i>                               | <i>630 [V]</i>                                     |
| <i>Rated surge voltage (1) [kV]</i>                           | <i>6 [kV]</i>                                      |
| <i>Nominal current [A]</i>                                    | <i>16 [A]</i>                                      |
| <i>Overvoltage category EN 2</i>                              | <i>II</i>  |
| <i>Degree of pollution (2)</i>                                | <i>2</i>   |
| <i>Rated voltage EN (2) [V]</i>                               | <i>1000 [V]</i>                                    |
| <i>Rated surge voltage (2) [kV]</i>                           | <i>6 [kV]</i>                                      |
| <i>Nominal current (2) [A]</i>                                | <i>16 [A]</i>                                      |
| <i>Overvoltage category EN 3</i>                              | <i>III</i>   |
| <i>Degree of pollution (3)</i>                                | <i>3</i>   |
| <i>Rated voltage EN (3) [V]</i>                               | <i>500 [V]</i>                                     |
| <i>Rated surge voltage (3) [kV]</i>                           | <i>6 [kV]</i>                                      |
| <i>Nominal current (3) [A]</i>                                | <i>16 [A]</i>                                      |
| <i>Number of individual connection objects at the product</i> | <i>1</i>   |
| <i>Connection technology (1)</i>                              | <i>CAGE CLAMP®</i>                                 |
| <i>Solid sizes 1</i>  | <i>0.08 ... 2.5 mm<sup>2</sup> / 28 ... 12 AWG</i> |
| <i>Fine-stranded wires 1</i>                                  | <i>0.08 ... 2.5 mm<sup>2</sup> / 28 ... 12 AWG</i> |
| <i>Fine-stranded wires with insulated ferrule 1</i>           | <i>0.25 ... 1.5 mm<sup>2</sup> / ...</i>           |
| <i>Fine-stranded wires with uninsulated ferrule 1</i>         | <i>0.25 ... 2.5 mm<sup>2</sup> / ...</i>           |
| <i>Strip length 1</i>   | <i>8 ... 9 mm / 0.31 ... 0.35 in</i>               |
| <i>Material group</i>   | <i>I</i>   |
| <i>Insulating material</i>                                    | <i>Polyamide 6.6 (PA 6.6)</i>                      |
| <i>Flammability rating per UL 94</i>                          | <i>V0</i>  |
| <i>Limit temperature range</i>                                | <i>-60 C ... 85 C</i>                              |
| <i>Clamping spring material</i>                               | <i>Chrome-nickel spring steel (CrNi)</i>           |
| <i>Contact material</i>                                       | <i>Copper alloy</i>                                |
| <i>Contact plating</i>  | <i>tin-plated</i>                                  |
| <i>Fire load [MJ]</i>   | <i>0.416 [MJ]</i>                                  |
| <i>Weight [g]</i>   | <i>25.277 [g]</i>                                  |
| <i>Width</i>  | <i>89 mm / 3.504 in</i>                            |

Printview: Female connector; with snap-in mounting feet; 12-pole; pin spacing 7.5 mm / 0.295 in; with 209-137 mounting adapter also for DIN 35 rail; codable; with 2 locking latches; Plate thickness 0.6x1.2 mm; Fixing holes 3.5 mm Ø - Item No.: 231-212/008-000

#### Technical data

|                         |                     |
|-------------------------|---------------------|
| Height                  | 18.8 mm / 0.74 in   |
| Height from the surface | 14.3 mm / 0.563 in  |
| Length                  | 26.45 mm / 1.041 in |

#### Approbation

| Item No.        | Registration | Registration no.  | Voltage [V] | Current [A] | Cross section [mm², AWG] |
|-----------------|--------------|-------------------|-------------|-------------|--------------------------|
| 231-212/008-000 | ABS          | 04-HG469925/1-PDA | 400         | 16          | 0,08-2,5                 |
| 231-212/008-000 | BV           | 11915/A0          | 400         | 16          | 2,5                      |
| 231-212/008-000 | CCA          | 5764              | 400         | 16          | 0,08-2,5                 |
| 231-212/008-000 | CSA          | 154112-1466354    | 300         | 15          | 22-12                    |
| 231-212/008-000 | GL           | 17296-00HH        | 400         | 16          | 0,08-2,5                 |
| 231-212/008-000 | KEMA         | 2083746.02        | 400         | 16          | 0,08-2,5                 |
| 231-212/008-000 | LR           | 96/20035          | 400         | 16          | 0,08-2,5                 |
| 231-212/008-000 | UL           | E45172            | 300         | 15          | 22-12                    |

#### Accessories

##### Insulation stop

| Item no. | Description                                 | Pack. unit (Sub Pack) |
|----------|---|-----------------------|
| 231-673  | Insulation stop; 0.08-0.2 mm² / 0.2 mm² "s" | 200                   |
| 231-674  | Insulation stop; 0.25 - 0.5 mm²             | 200                   |
| 231-675  | Insulation stop; 0.75 - 1 mm²               | 200                   |

##### Finger guard

| Item no. | Description                                      | Pack. unit (Sub Pack) |
|----------|--|-----------------------|
| 231-668  | Lockout caps; for covering unused clamping units | 100                   |

Printview: Female connector; with snap-in mounting feet; 12-pole; pin spacing 7.5 mm / 0.295 in; with 209-137 mounting adapter also for DIN 35 rail; codable; with 2 locking latches; Plate thickness 0.6x1.2 mm; Fixing holes 3.5 mm Ø - Item No.: 231-212/008-000

## Accessories

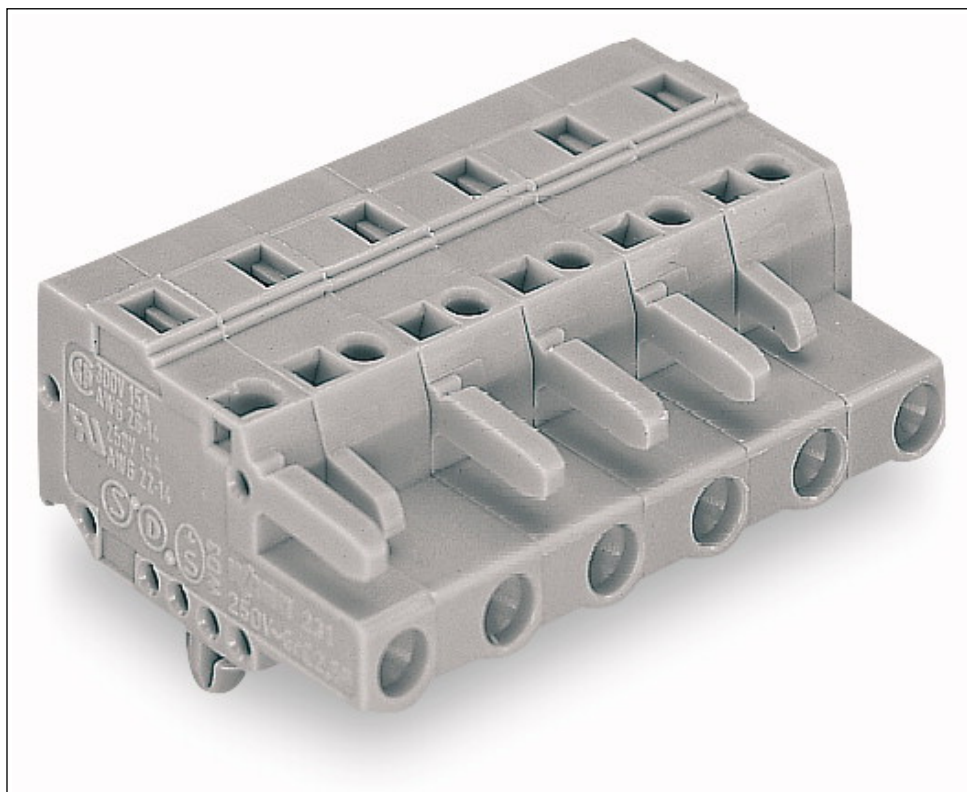
### General accessory

| Item no. | Description   | Pack. unit (Sub Pack) |
|----------|---|-----------------------|
| 210-136  | Test plug; 2 mm Ø; with 500 mm cable  | 1                     |
| 210-137  | Test plug; 2.3 mm Ø; with 500 mm cable  | 1                     |
| 210-199  | Stickers for operating instructions; for multi connection system  | 100                   |
| 210-657  | Operating tool with partially insulated shaft; blade (3.5 x 0.5) mm; short; suitable for 260, 261, 262, 264, 270, 280, 281, 869, 870 and 880 Series   | 1                     |
| 210-658  | Operating tool with partially insulated shaft; blade (3.5 x 0.5) mm; short; angled; particularly suitable for 280 Series actuator and sensor terminal blocks and also for Series 260, 261, 262, 264, 280, 281, 869, 870, 880, 2002, | 1                     |
| 210-720  | Operating tool with partially insulated shaft; Type 2, blade (3.5 x 0.5) mm; suitable for 260, 261, 262, 264, 270, 280, 281, 290, 775, 776, 777, 769, 780, 781, 869, 870, 880, 2002, 2003, 2004, 2005 and 2022 Series               | 1                     |
| 231-131  | Push-button; for female and male connectors; loose  | 25                    |
| 231-159  | Operating tool; for male and female connectors with CAGE CLAMP®; of Series 231, 232, 721, 722, 723, 731, 732  | 25                    |
| 231-231  | Combination operating tool; for male and female connectors with CAGE CLAMP®   | 25                    |
| 231-291  | Operating tool; for male and female connectors with CAGE CLAMP®; loose  | 25                    |
| 231-662  | Test plugs for female connectors; for 7.5 mm and 7.62 mm pin spacing  | 100                   |
| 210-250  | Operating tool; for female and male connectors with CAGE CLAMP® connection; MCS MIDI & MINI   | 1                     |

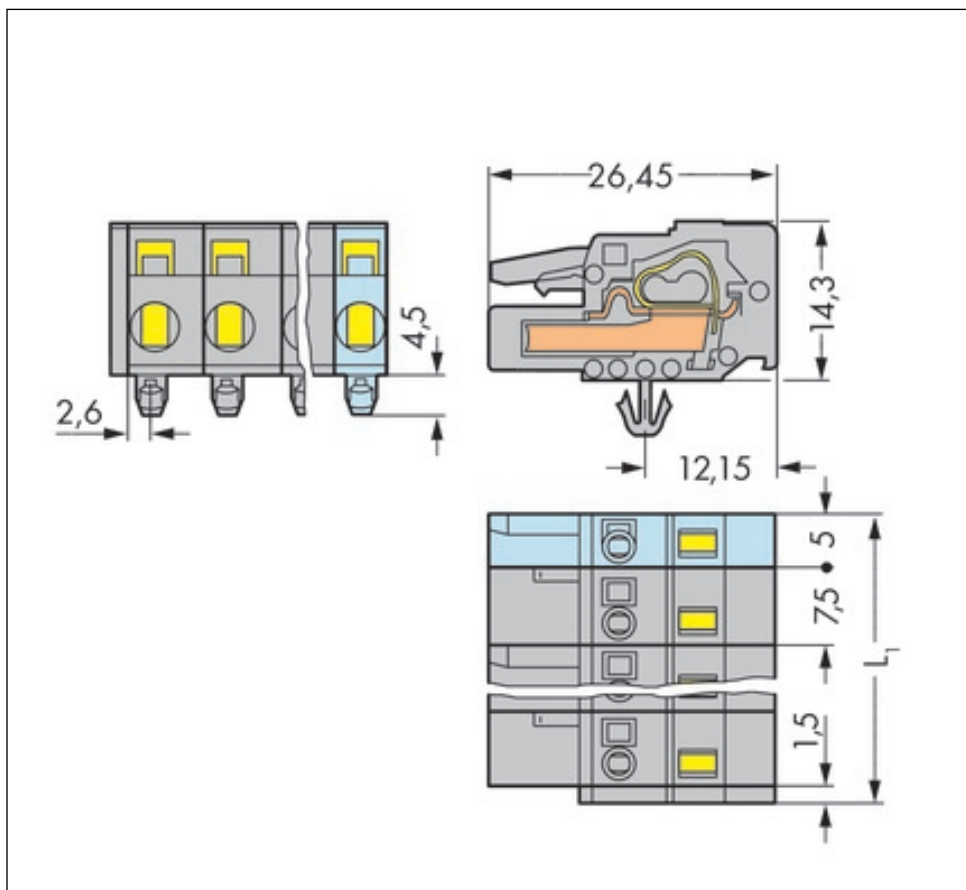
Printview: Female connector; with snap-in mounting feet; 12-pole; pin spacing 7.5 mm / 0.295 in; with 209-137 mounting adapter also for DIN 35 rail; codable; with 2 locking latches; Plate thickness 0.6x1.2 mm; Fixing holes 3.5 mm Ø - Item No.: 231-212/008-000

---

#### Images & drawings



Printview: Female connector; with snap-in mounting feet; 12-pole; pin spacing 7.5 mm / 0.295 in; with 209-137 mounting adapter also for DIN 35 rail; codable; with 2 locking latches; Plate thickness 0.6x1.2 mm; Fixing holes 3.5 mm Ø - Item No.: 231-212/008-000



#### Address

WAGO Kontakttechnik GmbH & Co. KG

Hansastr. 27

32423 Minden

Telefon: 0571/887-0

Fax: 0571/887-169

<http://www.wago.com>

© WAGO Kontakttechnik GmbH & Co. KG

Technische Änderungen und Irrtümer vorbehalten.