

DLP2000 (.2nHD) DMD

1 Features

- Ultra Compact 0.2-Inch (5.55-mm) Diagonal Micromirror Array
 - 640 × 360 Array of Aluminum Micrometer-Sized Mirrors, in an Orthogonal Layout
 - 7.56-Micron Micromirror Pitch
 - 12° Micromirror Tilt (Relative to Flat Surface)
 - Corner Illumination for Optimal Efficiency and Optical Engine Size
- Dedicated DLPC2607 Display Controller and DLPA1000 PMIC/LED Driver for Reliable Operation

2 Applications

- Internet of Things (IoT) Devices Including:
 - Control Panels
 - Security Systems
 - Thermostats
- Wearable Displays
- Embedded Displays for Products Including:
 - Tablets
 - Cameras
 - Artificial Intelligence (AI) Assistants
- Micro Digital Signage
- Ultra-low Power Smart Accessory Projector

3 Description

The DLP2000 digital micromirror device (DMD) is a digitally controlled micro-opto-electromechanical system (MOEMS) spatial light modulator (SLM). When coupled to an appropriate optical system, the DLP2000 DMD displays a crisp and high quality image or video. DLP2000 is part of the chipset comprising of the DLP2000 DMD and [DLPC2607](#) display controller. This chipset is also supported by the [DLPA1000](#) PMIC/LED driver. The compact physical size of the DLP2000 is well-suited for portable equipment where small form factor and low power is important. The compact package complements the small size of LEDs to enable highly efficient, robust light engines.

Visit the [getting started with TI DLP®Pico™ display technology](#) page to learn how to get started with the DLP2000 DMD.

The DLP2000 includes established resources to help the user accelerate the design cycle, which include [production ready optical modules](#), [optical modules manufactures](#), and [design houses](#).

Device Information⁽¹⁾

PART NUMBER	PACKAGE	BODY SIZE (NOM)
DLP2000	FQC (42)	14.12 mm × 4.97 mm × 3.56 mm

(1) For all available packages, see the orderable addendum at the end of the data sheet.

Simplified Schematic

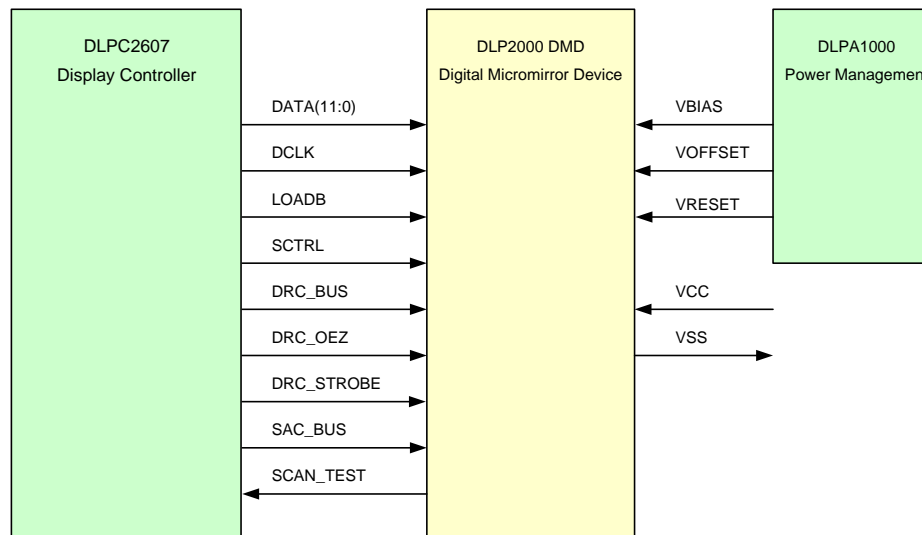


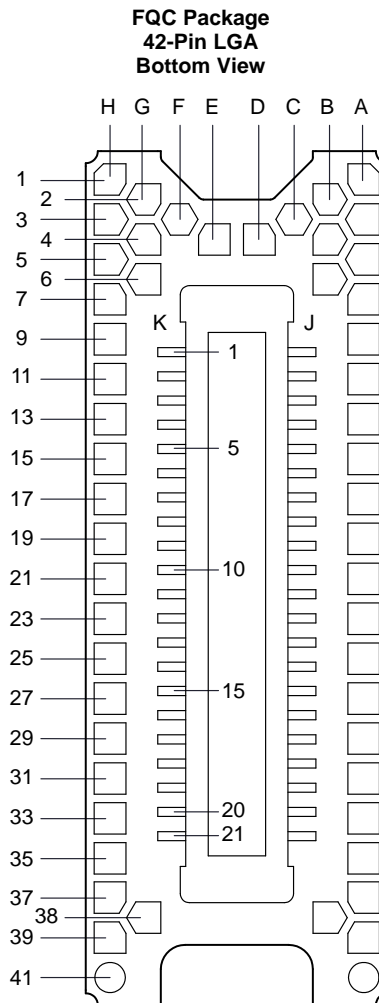
Table of Contents

1 Features	1	7.4 Device Functional Modes	18
2 Applications	1	7.5 Window Characteristics and Optics	18
3 Description	1	7.6 Micromirror Array Temperature Calculation	19
4 Revision History	2	7.7 Micromirror Landed-On/Landed-Off Duty Cycle	20
5 Pin Configuration and Functions	3	8 Application and Implementation	23
6 Specifications	7	8.1 Application Information	23
6.1 Absolute Maximum Ratings	7	8.2 Typical Application	23
6.2 Storage Conditions	7	9 Power Supply Recommendations	25
6.3 ESD Ratings	7	9.1 Power Supply Power-Up Procedure	25
6.4 Recommended Operating Conditions	8	9.2 Power Supply Power-Down Procedure	25
6.5 Thermal Information	9	10 Layout	28
6.6 Electrical Characteristics	9	10.1 Layout Guidelines	28
6.7 Timing Requirements	10	10.2 Layout Example	28
6.8 System Mounting Interface Loads	12	11 Device and Documentation Support	30
6.9 Physical Characteristics of the Micromirror Array	13	11.1 Device Support	30
6.10 Micromirror Array Optical Characteristics	15	11.2 Related Links	30
6.11 Window Characteristics	15	11.3 Community Resources	30
6.12 Chipset Component Usage Specification	16	11.4 Trademarks	30
7 Detailed Description	17	11.5 Electrostatic Discharge Caution	31
7.1 Overview	17	11.6 Glossary	31
7.2 Functional Block Diagram	17	12 Mechanical, Packaging, and Orderable Information	32
7.3 Feature Description	18		

4 Revision History

DATE	REVISION	NOTES
July 2017	*	Initial release

5 Pin Configuration and Functions



Pin Functions

PIN		TYPE	SIGNAL	DATA RATE	DESCRIPTION	PACKAGE NET LENGTH (mm)
NAME	NO.					
DATA INPUTS						
DATA(0)	J13	Input	LVC MOS	DDR	Input Data Bus.	8.83
DATA(1)	J2	Input	LVC MOS	DDR	Input Data Bus.	7.53
DATA(2)	J4	Input	LVC MOS	DDR	Input Data Bus.	6.96
DATA(3)	J6	Input	LVC MOS	DDR	Input Data Bus.	7.05
DATA(4)	J7	Input	LVC MOS	DDR	Input Data Bus.	7.56
DATA(5)	J8	Input	LVC MOS	DDR	Input Data Bus.	7.07
DATA(6)	J12	Input	LVC MOS	DDR	Input Data Bus.	7.61
DATA(7)	J10	Input	LVC MOS	DDR	Input Data Bus.	7.68
DATA(8)	K4	Input	LVC MOS	DDR	Input Data Bus.	7.31
DATA(9)	K2	Input	LVC MOS	DDR	Input Data Bus.	6.76
DATA(10)	K7	Input	LVC MOS	DDR	Input Data Bus.	8.18
DATA(11)	K6	Input	LVC MOS	DDR	Input Data Bus.	7.81
DCLK	K9	Input	LVC MOS		Input Data Clock.	7.78
CONTROL INPUTS						

Pin Functions (continued)

PIN		TYPE	SIGNAL	DATA RATE	DESCRIPTION	PACKAGE NET LENGTH (mm)
NAME	NO.					
LOADB	K10	Input	LVC MOS	DDR	Parallel Latch Load Enable.	7.64
SCTRL	K12	Input	LVC MOS	DDR	Serial Control (Sync).	8.62
DRC_BUS	K14	Input	LVC MOS		Reset Control Serial Bus. Synchronous to Rising Edge of DCLK. Bond Pad does Not connect to internal Pull Down	7.28
DRC_OEZ	K18	Input	LVC MOS		Active Low. Output Enable signal for internal Reset Driver circuitry. Bond Pads do Not connect to internal Pull Down	4.69
DRC_STROBE	J15	Input	LVC MOS		Rising Edge on DRC_STROBE latches in the Control Signals. Synchronous to Rising Edge of DCLK. Bond Pad does Not connect to internal Pull Down	7.61
SAC_BUS	K16	Input	LVC MOS		Stepped Address Control Serial Bus. Synchronous to Rising Edge of DCLK. Bond Pad does Not connect to internal Pull Down	8.17
SCAN_TEST	K20	Input	LVC MOS		MUX'ed output for scanned chip id	1.18
POWER						
VBIAS	J16	Power			Power supply for Positive Bias level of Mirror Reset signal	
VOFFSET	K15	Power			Power Supply for High Voltage CMOS logic. Power Supply for Stepped High Voltage at Mirror Address Electrodes. Power supply for Offset level of Mirror Reset signal	
VRESET	J20	Power			Power supply for Negative Reset level of Mirror Reset signal	
VCC	J1	Power			Power Supply for Low Voltage CMOS logic. Power Supply for Normal High Voltage at Mirror Address Electrodes. Power supply for Offset level of Mirror Reset signal during Power Down	
VCC	J11	Power				
VCC	J21	Power				
VCC	K1	Power				
VCC	K11	Power				
VCC	K21	Power			Common return. Ground for all power.	
VSS	J3	Power				
VSS	J5	Power				
VSS	J9	Power				
VSS	J14	Power				
VSS	J17	Power				
VSS	J18	Power				
VSS	J19	Power				
VSS	K3	Power				
VSS	K5	Power				
VSS	K8	Power				
VSS	K13	Power				
VSS	K17	Power				
VSS	K19	Power				

Pin Functions - Test Pads

Electrical Test Pad	DLP® System Board
A1	Do Not Connect
A3	Do Not Connect
A5	Do Not Connect
A7	Do Not Connect
A9	Do Not Connect
A11	Do Not Connect
A13	Do Not Connect
A15	Do Not Connect
A17	Do Not Connect
A19	Do Not Connect
A21	Do Not Connect
A23	Do Not Connect
A25	Do Not Connect
A27	Do Not Connect
A29	Do Not Connect
A31	Do Not Connect
A33	Do Not Connect
A35	Do Not Connect
A37	Do Not Connect
A39	Do Not Connect
A41	Do Not Connect
B2	Do Not Connect
B4	Do Not Connect
B6	Do Not Connect
B38	Do Not Connect
C3	Do Not Connect
D4	Do Not Connect
E4	Do Not Connect
F3	Do Not Connect
G2	Do Not Connect
G4	Do Not Connect
G6	Do Not Connect
G38	Do Not Connect
H1	Do Not Connect
H3	Do Not Connect
H5	Do Not Connect
H7	Do Not Connect
H9	Do Not Connect
H11	Do Not Connect
H13	Do Not Connect
H15	Do Not Connect
H17	Do Not Connect
H19	Do Not Connect
H21	Do Not Connect
H23	Do Not Connect
H25	Do Not Connect
H27	Do Not Connect

Pin Functions - Test Pads (continued)

Electrical Test Pad	DLP® System Board
H29	Do Not Connect
H31	Do Not Connect
H33	Do Not Connect
H35	Do Not Connect
H37	Do Not Connect
H39	Do Not Connect
H41	Do Not Connect

6 Specifications

6.1 Absolute Maximum Ratings

over operating free-air temperature range (unless otherwise noted)⁽¹⁾

			MIN	MAX	UNIT
Supply Voltage	V _{CC}	LVC MOS Logic Supply Voltage ⁽²⁾	–0.5	4	V
	V _{OFFSET}	Mirror Electrode and HVCMOS Voltage ⁽²⁾	–0.5	8.75	V
	V _{BIAS}	Mirror Electrode Voltage	–0.5	17	V
	V _{BIAS} – V _{OFFSET}	Supply Voltage Delta ⁽³⁾		8.75	V
	V _{RESET}	Mirror Electrode Voltage	–11	0.5	V
Input Voltage	Input voltage: other inputs	See ⁽²⁾	–0.5	V _{CC} + 0.3	V
Clock Frequency	D _{CLK}	Clock Frequency ⁽⁴⁾	60	80	MHz
Environmental	T _{ARRAY} and T _{WINDOW}	Temperature – operational ⁽⁵⁾	–20	90	°C
		Temperature – non-operational ⁽⁵⁾	–40	90	°C
	T _{DP}	Dew Point Temperature - operating and non-operating (non-condensing)	See Note ⁽⁶⁾		°C
	T _{DELTA}	Absolute Temperature delta between any point on the window edge and the ceramic test point TP1 ⁽⁷⁾		30	°C

- (1) Stresses beyond those listed under *Absolute Maximum Ratings* may cause permanent damage to the device. These are stress ratings only, which do not imply functional operation of the device at these or any other conditions beyond those indicated under *Recommended Operating Conditions*. Exposure to absolute-maximum-rated conditions for extended periods may affect device reliability.
- (2) All voltage values are with respect to GND (V_{SS}). V_{OFFSET}, V_{CC}, V_{BIAS}, V_{RESET} and V_{SS} power supplies are required for the normal DMD operating mode.
- (3) To prevent excess current, the supply voltage delta |V_{BIAS} – V_{OFFSET}| must be less than 8.75 V.
- (4) BSA to Reset Timing specifications are synchronous and guaranteed for D_{CLK} between 60 MHz and 80 MHz.
- (5) The highest temperature of the active array (as calculated by the [Micromirror Array Temperature Calculation](#)) or of any point along the Window Edge as defined in [Figure 10](#).
- (6) The DLP2000 DMD is intended for use in well controlled, low dew point environments. Please contact your local TI sales person or TI distributor representative to determine if this device is suitable for your application and operating environment compared to other DMD solutions. DLP Products offers a broad portfolio of DMDs suitable for a wide variety of applications.
- (7) Temperature delta is the highest difference between the ceramic test point 1 (TP1) and anywhere on the window edge as shown in [Figure 10](#).

6.2 Storage Conditions

Applicable before the DMD is installed in the final product

			MIN	MAX	UNIT
T _{DMD}	DMD Temperature		–40	85	°C
T _{DP}	Dew Point Temperature	(non-condensing)		See Note ⁽¹⁾	°C

- (1) The DLP2000 DMD is intended for use in well controlled, low dew point environments. Please contact your local TI sales person or TI distributor representative to determine if this device is suitable for your application and operating environment compared to other DMD solutions. DLP Products offers a broad portfolio of DMDs suitable for a wide variety of applications.

6.3 ESD Ratings

			VALUE	UNIT
V _(ESD)	Electrostatic discharge	Human-body model (HBM), per ANSI/ESDA/JEDEC JS-001 ⁽¹⁾	±2000	V

- (1) JEDEC document JEP155 states that 500-V HBM allows safe manufacturing with a standard ESD control process.

6.4 Recommended Operating Conditions

Over operating free-air temperature range (unless otherwise noted)

			MIN	NOM	MAX	UNIT
Supply Voltage	V _{CC}	LVC MOS Logic power supply voltage ⁽¹⁾	1.65	1.8	1.95	V
	V _{OFFSET}	Mirror Electrode and HVC MOS voltage ⁽¹⁾	8.25	8.5	8.75	V
	V _{BIAS}	Mirror Electrode Voltage	15.5	16	16.5	V
		Supply Voltage Delta V _{BIAS} – V _{OFFSET} ⁽²⁾			8.75	V
	V _{RESET}	Mirror Electrode Voltage	–9.5	–10	–10.5	V
Input Voltage	V _P	Positive Going Threshold Voltage	0.4*V _{CC}		0.7*V _{CC}	V
	V _N	Negative Going Threshold Voltage	0.3*V _{CC}		0.6*V _{CC}	V
	V _H	Hysteresis Voltage (V _p – V _n)	0.1*V _{CC}		0.4*V _{CC}	V
Environmental	T _{ARRAY}	Array Temperature – long-term operational ⁽³⁾⁽⁴⁾⁽⁵⁾⁽⁶⁾	0		40 to 70	°C
		Array Temperature – short-term operational ⁽⁴⁾⁽⁷⁾	–20		75	°C
	T _{DELTA}	Absolute Temperature difference between any point on the window edge and the ceramic test point TP1 ⁽⁸⁾			30	°C
	T _{WINDOW}	Window Temperature – operational ⁽³⁾⁽⁹⁾			90	°C
	T _{DP}	Dew Point Temperature (non-condensing)		See Note ⁽¹⁰⁾		°C
	ILL _{UV}	Illumination wavelength < 400 nm ⁽³⁾			0.68	mW/cm ²
	ILL _{VIS}	Illumination wavelengths between 400 nm and 700 nm		Thermally limited		
	ILL _{IR}	Illumination wavelength > 700 nm			10	mW/cm ²

- (1) All voltage values are with respect to GND (V_{SS}). V_{OFFSET}, V_{CC}, V_{BIAS}, V_{RESET} and V_{SS} power supplies are required for the normal DMD operating mode.
- (2) To prevent excess current, the supply voltage delta |V_{BIAS} – V_{OFFSET}| must be less than 8.75 V.
- (3) Simultaneous exposure of the DMD to the maximum [Recommended Operating Conditions](#) for temperature and UV illumination will reduce device lifetime.
- (4) The array temperature cannot be measured directly and must be computed analytically from the temperature measured at test point 1 (TP1) shown in [Figure 10](#) and the package thermal resistance using [Micromirror Array Temperature Calculation](#).
- (5) Per [Figure 1](#), the maximum operational array temperature should be derated based on the micromirror landed duty cycle that the DMD experiences in the end application. Refer to [Micromirror Landed-On/Landed-Off Duty Cycle](#) for a definition of micromirror landed duty cycle.
- (6) Long-term is defined as the usable life of the device
- (7) Array temperatures beyond those specified as long-term are recommended for short-term conditions only (power-up). Short-term is defined as cumulative time over the usable life of the device and is less than 500 hours for temperatures between the long-term maximum and 75°C, and less than 500 hours for temperatures between 0°C and –20°C.
- (8) Temperature delta is the highest difference between the ceramic test point 1 (TP1) and anywhere on the window edge as shown in [Figure 10](#).
- (9) Window temperature is the highest temperature on the window edge shown in [Figure 10](#).
- (10) The DLP2000 DMD is intended for use in well controlled, low dew point environments. Please contact your local TI sales person or TI distributor representative to determine if this device is suitable for your application and operating environment compared other DMD solutions. DLP Products offers a broad portfolio of DMDs suitable for a wide variety of applications.

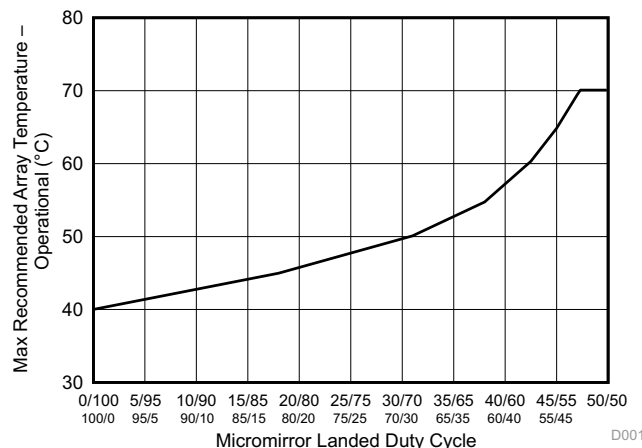


Figure 1. Max Recommended Array Temperature - Derating Curve

6.5 Thermal Information

THERMAL METRIC ⁽¹⁾	DLP2000	UNIT
	FQC (LGA)	
	42 PINS	
Thermal resistance active area to test point 1 (TP1) ⁽¹⁾	8	°C/W

- (1) The DMD is designed to conduct absorbed and dissipated heat to the back of the package. The cooling system must be capable of maintaining the package within the temperature range specified in the [Recommended Operating Conditions](#). The total heat load on the DMD is largely driven by the incident light absorbed by the active area; although other contributions include light energy absorbed by the window aperture and electrical power dissipation of the array. Optical systems should be designed to minimize the light energy falling outside the window aperture since any additional thermal load in this area can significantly degrade the reliability of the device.

6.6 Electrical Characteristics

over operating free-air temperature range (unless otherwise noted)

PARAMETER		TEST CONDITIONS	MIN	TYP	MAX	UNIT
V _{OH}	High level output voltage	V _{CC} = 1.65 V I _{OH} = –2 mA	1.20			V
V _{OL}	Low level output voltage	V _{CC} = 1.95 V I _{OL} = –2 mA			0.45	V
I _{IL}	Low level input current ⁽¹⁾⁽²⁾	V _{CC} = 1.95 V V _I = 0 V			52	nA
I _{IH}	High level input current ⁽¹⁾⁽²⁾	V _{CC} = 1.95 V V _I = 1.95 V	41			nA
CURRENT						
I _{CC}	Current at V _{CC} = 1.95 V	D _{CLK} Frequency = 77 MHz			30	mA
I _{OFFSET}	Current at V _{OFFSET} = 8.75 V ⁽³⁾				1.5	mA
I _{BIAS}	Current at V _{BIAS} = 16.5 V ⁽³⁾⁽⁴⁾	3 Global Resets within time period = 200 μs			1.3	mA
I _{RESET}	Current at V _{RESET} = –10.5 V	3 Global Resets within time period = 200 μs			1.2	mA
POWER						
P _{CC}	Power at V _{CC} = 1.95 V ⁽⁵⁾	D _{CLK} Frequency = 77 MHz		26	59	mW
P _{OFFSET}	Power at V _{OFFSET} = 8.75 V ⁽⁵⁾			5	13	mW
P _{BIAS}	Power at V _{BIAS} = 16.5 V ⁽⁵⁾	3 Global Resets within time period = 200 μs		9	22	mW
P _{RESET}	Power at V _{RESET} = –10.5 V ⁽⁵⁾	3 Global Resets within time period = 200 μs		4	13	mW
P _{TOTAL}	Supply power dissipation Total			44	107	mW
CAPACITANCE						
C _{IN}	Input Capacitance	f = 1 MHz			10	pF
C _{OUT}	Output Capacitance	f = 1 MHz			10	pF

- (1) Includes LVCMOS pins only.
(2) LVCMOS input pins do not have Pull-up or Pull-down configurations.
(3) To prevent excess current, the supply voltage delta |V_{BIAS} – V_{OFFSET}| must be less than 8.75 V.
(4) When DRC_OEZ = High, the internal reset drivers are tri-stated and I_{BIAS} standby current is 3.8 mA.
(5) Nominal values are measured with V_{CC} = 1.8 V, V_{OFFSET} = 8.5 V, V_{BIAS} = 16 V, and V_{RESET} = –10 V.

6.7 Timing Requirements

			MIN	NOM	MAX	UNIT
t_r	Rise time ⁽¹⁾	20% to 80% DCLK			2.5	ns
t_f	Fall time ⁽¹⁾	80% to 20% DCLK			2.5	ns
t_r	Rise time ⁽²⁾	20% to 80% DATA(11:0), SCTRL, LOADB			2.5	ns
t_f	Fall time ⁽²⁾	80% to 20% DATA(11:0), SCTRL, LOADB			2.5	ns
t_c	Cycle time ⁽¹⁾	50% to 50% DCLK	12.5		16.67	ns
t_w	Pulse duration ⁽¹⁾	50% to 50% DCLK	5			ns
t_w	Pulse duration low ⁽¹⁾	50% to 50% LOADB	7			ns
t_w	Pulse duration high ⁽¹⁾	50% to 50% DRC_STROBE	7			ns
t_{su}	Setup time ⁽¹⁾	DATA(11:0) before rising or falling edge of DCLK	1			ns
t_{su}	Setup time ⁽¹⁾	SCTRL before rising or falling edge of DCLK	1			ns
t_{su}	Setup time ⁽¹⁾	LOADB low before rising edge of DCLK	1			ns
t_{su}	Setup time ⁽²⁾	SAC_BUS low before rising edge of DCLK	2			ns
t_{su}	Setup time ⁽²⁾	DRC_BUS high before rising edge of DCLK	2			ns
t_{su}	Setup time ⁽¹⁾	DRC_STROBE high before rising edge of DCLK	2			ns
t_h	Hold time ⁽¹⁾	DATA(11:0) after rising or falling edge of DCLK	1			ns
t_h	Hold time ⁽¹⁾	SCTRL after rising or falling edge of DCLK	1			ns
t_h	Hold time ⁽¹⁾	LOADB low after falling edge of DCLK	1			ns
t_h	Hold time ⁽²⁾	SAC_BUS low after rising edge of DCLK	2			ns
t_h	Hold time ⁽²⁾	DRC_BUS after rising edge of DCLK	2			ns
t_h	Hold time ⁽¹⁾	DRC_STROBE after rising edge of DCLK	2			ns

(1) Refer to [Figure 2](#) and [Figure 3](#).

(2) Refer to [Figure 4](#) and [Figure 5](#).

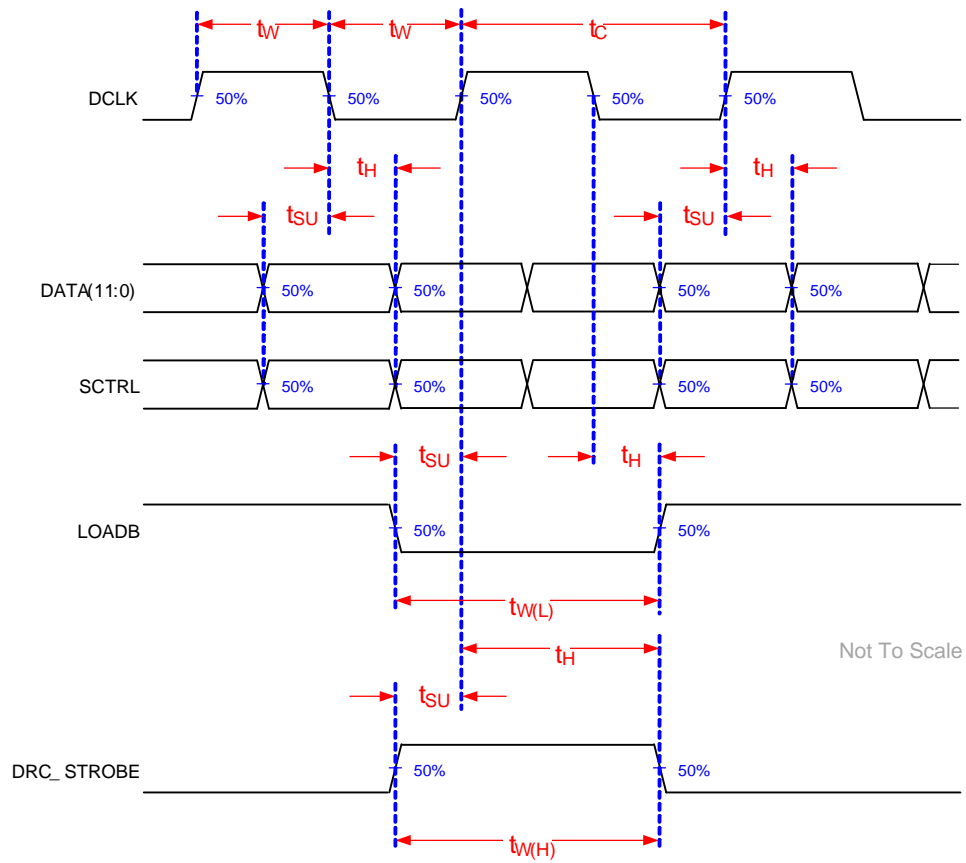


Figure 2. Switching Parameters 1

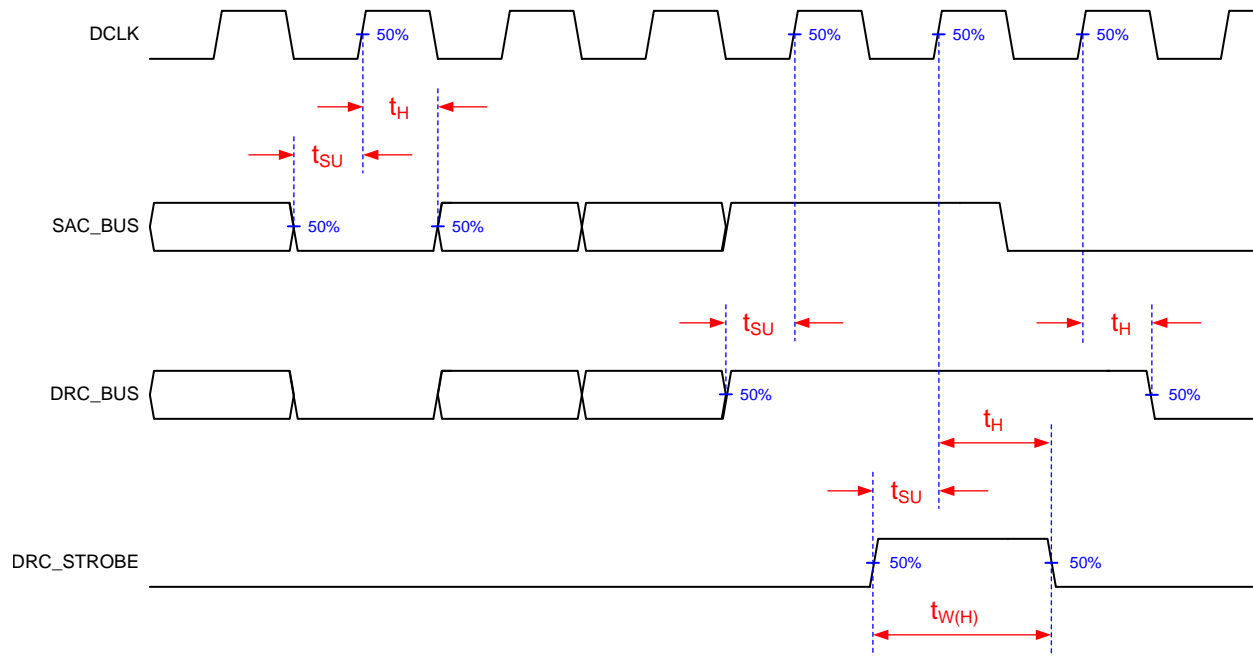


Figure 3. Switching Parameters 2

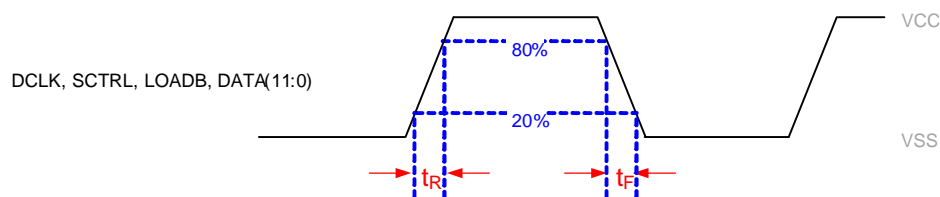


Figure 4. Rise and Fall Timing Parameters 1

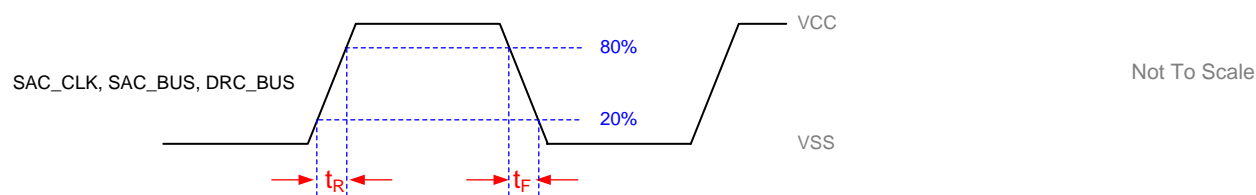


Figure 5. Rise and Fall Timing Parameters 2

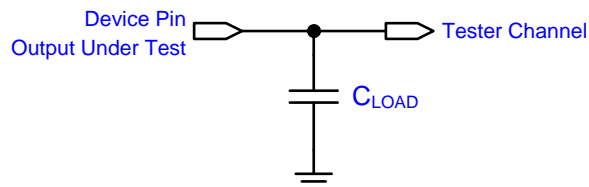


Figure 6. Test Load Circuit

See [Timing](#) for more information.

6.8 System Mounting Interface Loads

over operating free-air temperature range (unless otherwise noted)

PARAMETER		MIN	NOM	MAX	UNIT
Maximum system mounting interface load to be applied to the:	Connector area (see Figure 7)			45	N
	DMD mounting area uniformly distributed over 4 areas (see Figure 7)			100	N

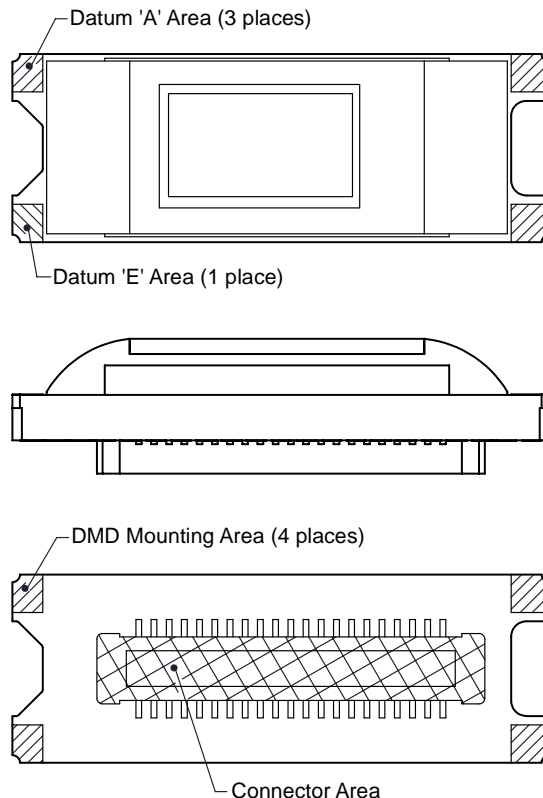


Figure 7. System Interface Loads

6.9 Physical Characteristics of the Micromirror Array

PARAMETER			VALUE	UNIT
M	Number of active columns ⁽¹⁾	See Figure 8	640	micromirrors
N	Number of active rows ⁽¹⁾	See Figure 8	360	micromirrors
P	Micromirror (pixel) pitch ⁽¹⁾	See Figure 8	7.56	μm
	Micromirror active array width ⁽¹⁾	M × P	4.8384	mm
	Micromirror active array height ⁽¹⁾	N × P	2.7216	mm
	Micromirror active border ⁽²⁾⁽³⁾	Pond of Micromirrors (POM)	8	micromirrors / side

- (1) See [Figure 8](#).
- (2) The structure and qualities of the border around the active array include a band of partially functional micromirrors called the “Pond of Micromirrors” (POM). These micromirrors are structurally and/or electrically prevented from tilting toward the bright or “on” state but still require an electrical bias to tilt toward “off.”
- (3) Out of the 8 POM rows on the top and bottom, only the 1 POM row closest to the active array is electrically attached to that reset group. The other 7 POM rows are attached to a dedicated POM internal reset driver circuit.

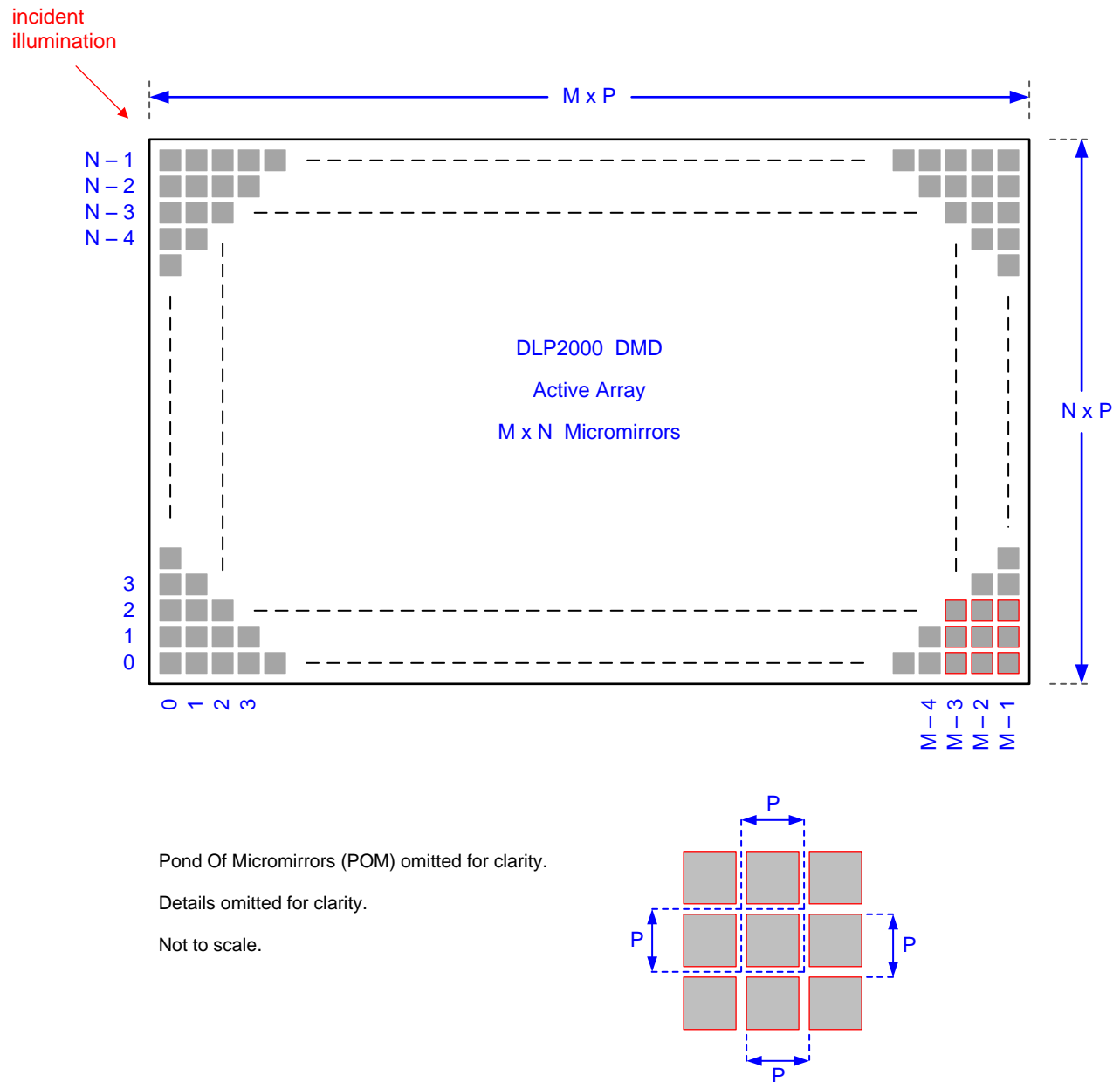


Figure 8. Micromirror Array Physical Characteristics

6.10 Micromirror Array Optical Characteristics

PARAMETER	MIN	NOM	MAX	UNIT
Micromirror Tilt - half angle, variation device to device ⁽¹⁾	11	12	13	degree
Axis of Rotation with respect to system datums, variation device to device ⁽²⁾	44	45	46	degree

- (1) Limits on variability of micromirror tilt half angle are critical in the design of the accompanying optical system. Variations in tilt angle within a device may result in apparent non-uniformities, such as line pairing and image mottling, across the projected image. Variations in the average tilt angle between devices may result in colorimetry and system contrast variations. The specified limits represent the tolerances of the tilt angles within a device.
- (2) See [Figure 9](#).

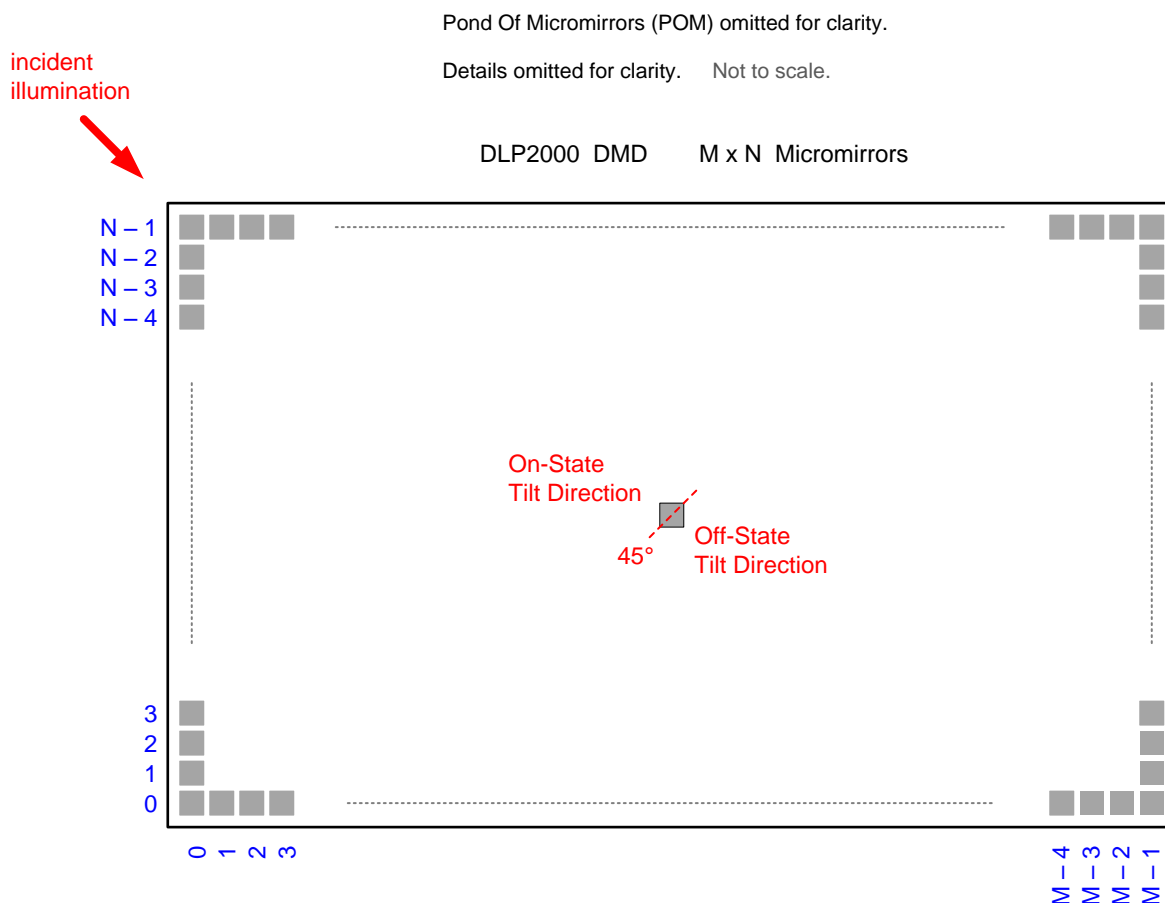


Figure 9. Landed Pixel Orientation and Tilt

See [Physical Characteristics of the Micromirror Array](#) for M and N specifications.

6.11 Window Characteristics

Table 1. DMD Window Characteristics

PARAMETER	VALUE	UNIT
Window Material	Corning Eagle XG	
Window Refractive Index at wavelength 546.1 nm	1.5119	
Window Transmittance, minimum within the wavelength range 420–680 nm. Applies to all angles 0–30° AOI. ⁽¹⁾⁽²⁾	97%	
Window Transmittance, average over the wavelength range 420–680 nm. Applies to all angles 30–45° AOI. ⁽¹⁾⁽²⁾	97%	

- (1) Single-pass through both surfaces and glass.
- (2) AOI – Angle Of Incidence is the angle between an incident ray and the normal of a reflecting or refracting surface.

6.12 Chipset Component Usage Specification

NOTE

TI assumes no responsibility for image quality artifacts or DMD failures caused by optical system operating conditions exceeding limits described previously.

The DLP2000 is a component of one or more DLP chipsets. Reliable function and operation of the DLP2000 requires that it be used in conjunction with the other components of the applicable DLP chipset, including those components that contain or implement TI DMD control technology. TI DMD control technology is the TI technology and devices for operating or controlling a DLP DMD.

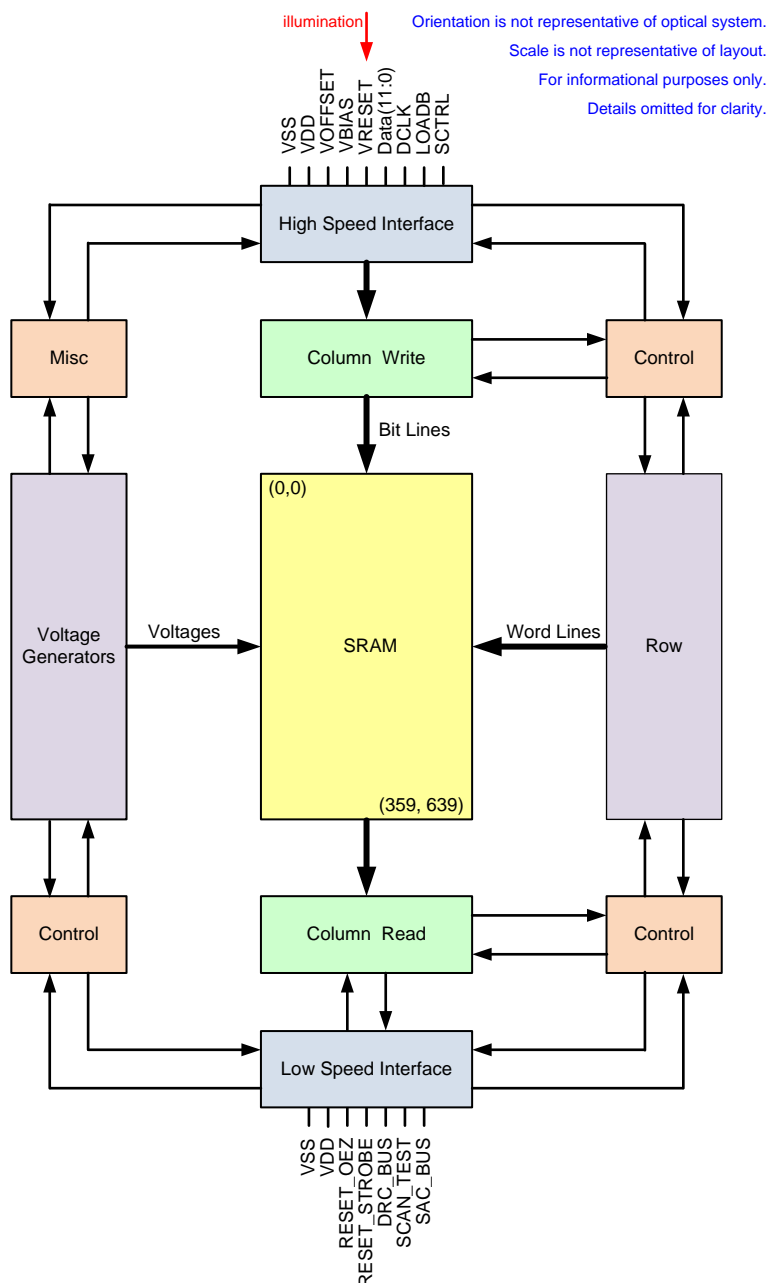
7 Detailed Description

7.1 Overview

The DLP2000 is a 0.2-inch diagonal spatial light modulator of aluminum micromirrors. Pixel array size is 640 columns by 360 rows in a square grid pixel arrangement. The DMD is an electrical input, optical output micro-electrical-mechanical system (MEMS). The electrical interface is a Double Data Rate (DDR) input data bus.

The DLP2000 is part of the chipset that includes the DLP2000 DMD, the DLPC2607 display controller, and the DLPA1000 PMIC/LED driver. To ensure optimal performance, the DLP2000 DMD should be used with the DLPC2607 display controller and the DLPA1000 PMIC/LED driver.

7.2 Functional Block Diagram



7.3 Feature Description

7.3.1 Power Interface

For the DLP2000 DMD, the power management IC is the DLPA1000. This driver contains three regulated DC supplies for the DMD reset circuitry: V_{BIAS} , V_{RESET} , and V_{OFFSET} .

7.3.2 Control Serial Interface

The control serial interface handles instructions that configure the DMD and control reset operation. DRC_BUS is the reset control serial bus, DRC_OEZ is the active low, output enable signal for internal reset driver circuitry, DRC_STROBE rising edge latches in the control signals, and SAC_BUS is the stepped address control serial bus.

7.3.3 High Speed Interface

The purpose of the high-speed interface is to transfer pixel data rapidly and efficiently, making use of high speed DDR transfer and compression techniques to save power and time. The high speed interface is composed of LVCMOS signal receivers for inputs and a dedicated clock.

7.3.4 Timing

The data sheet provides timing at the device pin. For output timing analysis, the tester pin electronics and its transmission line effects must be taken into account. [Figure 6](#) shows an equivalent test load circuit for the output under test. The load capacitance value stated is only for characterization and measurement of AC timing signals. This load capacitance value does not indicate the maximum load the device is capable of driving.

Timing reference loads are not intended as a precise representation of any particular system environment or depiction of the actual load presented by a production test. System designers should use IBIS or other simulation tools to correlate the timing reference load to a system environment. Refer to the [Application and Implementation](#) section.

7.4 Device Functional Modes

DMD functional modes are controlled by the DLPC2607 controller. See the [DLPC2607 controller data sheet](#) or contact a TI applications engineer.

7.5 Window Characteristics and Optics

7.5.1 Optical Interface and System Image Quality

TI assumes no responsibility for end-equipment optical performance. Achieving the desired end-equipment optical performance involves making trade-offs between numerous components and system design parameters. Optimizing system optical performance and image quality strongly relates to optical system design parameter trades. Although it is not possible to anticipate every conceivable application, projector image quality and optical performance depends on compliance with the optical system operating conditions described in the following sections.

7.5.1.1 Numerical Aperture and Stray Light Control

The angle defined by the numerical aperture of the illumination and projection optics at the DMD optical area should be the same. This angle should not exceed the nominal device mirror tilt angle unless appropriate apertures are added in the illumination and/or projection pupils to block out flat-state and stray light from the projection lens. The mirror tilt angle defines DMD capability to separate the "ON" optical path from any other light path, including undesirable flat-state specular reflections from the DMD window, DMD border structures, or other system surfaces near the DMD such as prism or lens surfaces. If the numerical aperture exceeds the mirror tilt angle, or if the projection numerical aperture angle is more than two degrees larger than the illumination numerical aperture angle, objectionable artifacts in the display's border and/or active area could occur.

Window Characteristics and Optics (continued)

7.5.1.2 Pupil Match

TI's optical and image quality specifications assume that the exit pupil of the illumination optics is nominally centered within two degrees of the entrance pupil of the projection optics. Misalignment of pupils can create objectionable artifacts in the display's border as well as the active area, which may require additional system apertures to control, especially if the numerical aperture of the system exceeds the pixel tilt angle.

7.5.1.3 Illumination Overfill

The active area of the device is surrounded by an aperture on the inside DMD window surface that masks structures of the DMD chip assembly from normal view, and is sized to anticipate several optical operating conditions. Overfill light illuminating the area outside the active array can create artifacts from the mechanical features surrounding the active array and other surface anomalies that may be visible on the screen. The illumination optical system should be designed to limit light flux incident anywhere outside more than 20 pixels from the edge of the active array on all sides. Depending on the particular system's optical architecture and assembly tolerances, this amount of overfill light on the outside of the active array may still cause artifacts to still be visible.

7.6 Micromirror Array Temperature Calculation

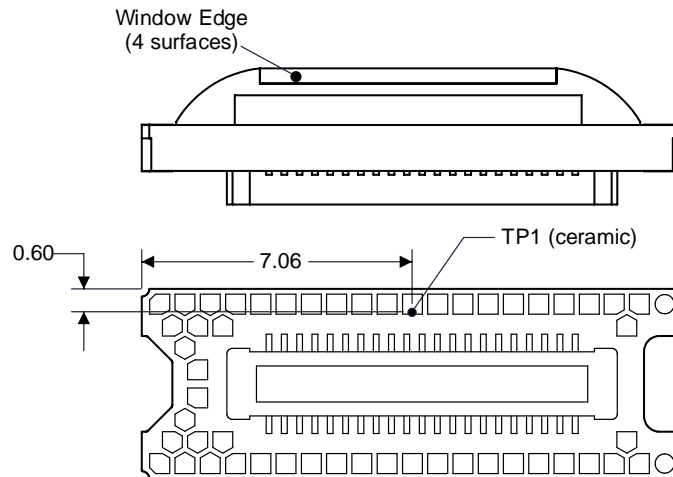


Figure 10. DMD Thermal Test Point

The micromirror array temperature can be computed analytically from measurement points on the outside of the package, the package thermal resistance, the electrical power dissipation, and the illumination heat load. The relationship between array temperature and the reference ceramic temperature is provided by the following equations:

$$T_{\text{ARRAY}} = T_{\text{CERAMIC}} + (Q_{\text{ARRAY}} \times R_{\text{ARRAY-TO-CERAMIC}}) \quad (1)$$

$$Q_{\text{ARRAY}} = Q_{\text{ELECTRICAL}} + Q_{\text{ILLUMINATION}} \quad (2)$$

$$Q_{\text{ILLUMINATION}} = (C_{\text{L2W}} \times \text{SL})$$

- T_{ARRAY} = Computed DMD array temperature (°C)
- T_{CERAMIC} = Measured ceramic temperature (°C), TP1 location in [Figure 10](#)
- $R_{\text{ARRAY-TO-CERAMIC}}$ = DMD package thermal resistance from array to outside ceramic (°C/W), specified in [Thermal Information](#)
- Q_{ARRAY} = Total DMD power; electrical plus absorbed (calculated) (W)
- $Q_{\text{ELECTRICAL}}$ = Nominal DMD electrical power dissipation (W)
- C_{L2W} = Conversion constant for screen lumens to absorbed optical power on the DMD (W/lm)
- SL = Measured ANSI screen lumens (lm)

(3)

Micromirror Array Temperature Calculation (continued)

The electrical power dissipation of the DMD is variable and depends on the voltages, data rates, and operating frequencies. A nominal electrical power dissipation to use when calculating array temperature is 0.045 watts. The absorbed power from the illumination source is variable and depends on the operating state of the mirrors and the intensity of the light source. The equations shown previously are valid for a 1-Chip DMD system with a total projection efficiency from DMD to screen of 87%.

The conversion constant C_{L2W} is based on DMD micromirror array characteristics. It assumes a spectral efficiency of 300 lumens/watt for the projected light, and an illumination distribution of 83.7% on the DMD active array and 16.3% on the DMD array border and window aperture. The conversion constant is calculated to be 0.00293 W/lm.

The following is a sample calculation for a typical projection application:

- $SL = 20 \text{ lm}$
- $T_{\text{Ceramic}} = 55^{\circ}\text{C}$
- $Q_{\text{Array}} = Q_{\text{ELECTRICAL}} + Q_{\text{ILLUMINATION}} = 0.045 \text{ W} + (0.00293 \text{ W/lm} \times 20 \text{ lm}) = 0.1036 \text{ W}$
- $T_{\text{Array}} = 55^{\circ}\text{C} + (0.1036 \text{ W} \times 8^{\circ}\text{C/W}) = 55.8^{\circ}\text{C}$

7.7 Micromirror Landed-On/Landed-Off Duty Cycle

7.7.1 Definition of Micromirror Landed-On/Landed-Off Duty Cycle

The micromirror landed-on/landed-off duty cycle (landed duty cycle) denotes the amount of time (as a percentage) that an individual micromirror is landed in the On state versus the amount of time the same micromirror is landed in the Off state.

As an example, a landed duty cycle of 100/0 indicates that the referenced pixel is in the On state 100% of the time (and in the Off state 0% of the time), whereas 0/100 would indicate that the pixel is in the Off state 100% of the time. Likewise, 50/50 indicates that the pixel is On 50% of the time and Off 50% of the time.

Note that when assessing landed duty cycle, the time spent switching from one state (ON or OFF) to the other state (OFF or ON) is considered negligible and is thus ignored.

Since a micromirror can only be landed in one state or the other (On or Off), the two numbers (percentages) always add to 100.

7.7.2 Landed Duty Cycle and Useful Life of the DMD

Knowing the long-term average landed duty cycle (of the end product or application) is important because subjecting all (or a portion) of the DMD's micromirror array (also called the active array) to an asymmetric landed duty cycle for a prolonged period of time can reduce the DMD's usable life.

Note that it is the symmetry/asymmetry of the landed duty cycle that is of relevance. The symmetry of the landed duty cycle is determined by how close the two numbers (percentages) are to being equal. For example, a landed duty cycle of 50/50 is perfectly symmetrical whereas a landed duty cycle of 100/0 or 0/100 is perfectly asymmetrical.

7.7.3 Landed Duty Cycle and Operational DMD Temperature

Operational DMD Temperature and Landed Duty Cycle interact to affect the DMD's usable life, and this interaction can be exploited to reduce the impact that an asymmetrical Landed Duty Cycle has on the DMD's usable life. This is quantified in the de-rating curve shown in [Figure 1](#). The importance of this curve is that:

- All points along this curve represent the same usable life.
- All points above this curve represent lower usable life (and the further away from the curve, the lower the usable life).
- All points below this curve represent higher usable life (and the further away from the curve, the higher the usable life).

In practice, this curve specifies the Maximum Operating DMD Temperature that the DMD should be operated at for a given long-term average Landed Duty Cycle.

Micromirror Landed-On/Landed-Off Duty Cycle (continued)

7.7.4 Estimating the Long-Term Average Landed Duty Cycle of a Product or Application

During a given period of time, the Landed Duty Cycle of a given pixel follows from the image content being displayed by that pixel.

For example, in the simplest case, when displaying pure-white on a given pixel for a given time period, that pixel will experience a 100/0 Landed Duty Cycle during that time period. Likewise, when displaying pure-black, the pixel will experience a 0/100 Landed Duty Cycle.

Between the two extremes (ignoring for the moment color and any image processing that may be applied to an incoming image), the Landed Duty Cycle tracks one-to-one with the gray scale value, as shown in [Table 2](#).

Table 2. Grayscale Value and Landed Duty Cycle

Grayscale Value	Landed Duty Cycle
0%	0/100
10%	10/90
20%	20/80
30%	30/70
40%	40/60
50%	50/50
60%	60/40
70%	70/30
80%	80/20
90%	90/10
100%	100/0

Accounting for color rendition (but still ignoring image processing) requires knowing both the color intensity (from 0% to 100%) for each constituent primary color (red, green, and/or blue) for the given pixel as well as the color cycle time for each primary color, where “color cycle time” is the total percentage of the frame time that a given primary must be displayed in order to achieve the desired white point.

During a given period of time, the landed duty cycle of a given pixel can be calculated as follows:

Landed Duty Cycle = (Red_Cycle_% × Red_Scale_Value) + (Green_Cycle_% × Green_Scale_Value) + (Blue_Cycle_% × Blue_Scale_Value)

where

- Red_Cycle_%, Green_Cycle_%, and Blue_Cycle_% represent the percentage of the frame time that Red, Green, and Blue are displayed (respectively) to achieve the desired white point. (4)

For example, assume that the red, green and blue color cycle times are 50%, 20%, and 30% respectively (in order to achieve the desired white point), then the Landed Duty Cycle for various combinations of red, green, blue color intensities would be as shown in [Table 3](#).

Table 3. Example Landed Duty Cycle for Full-Color Pixels

Red Cycle Percentage	Green Cycle Percentage	Blue Cycle Percentage	
50%	20%	30%	

Red Scale Value	Green Scale Value	Blue Scale Value	Landed Duty Cycle
0%	0%	0%	0/100
100%	0%	0%	50/50
0%	100%	0%	20/80
0%	0%	100%	30/70
12%	0%	0%	6/94
0%	35%	0%	7/93
0%	0%	60%	18/82
100%	100%	0%	70/30
0%	100%	100%	50/50
100%	0%	100%	80/20
12%	35%	0%	13/87
0%	35%	60%	25/75
12%	0%	60%	24/76
100%	100%	100%	100/0

8 Application and Implementation

NOTE

Information in the following applications sections is not part of the TI component specification, and TI does not warrant its accuracy or completeness. TI's customers are responsible for determining suitability of components for their purposes. Customers should validate and test their design implementation to confirm system functionality.

8.1 Application Information

The DMDs are spatial light modulators which reflect incoming light from an illumination source to one of two directions, with the primary direction being into projection or collection optics. Each application is derived primarily from the optical architecture of the system and the format of the data coming into the the DLPC2607 controller. Applications of interest include internet of things (IoT) devices such as control panels, and security systems and thermostats, as well as projection embedded in display applications like smartphones, tablets, cameras, and artificial intelligence (AI) assistance. Other applications include wearable (near-eye) displays, micro digital signage, and ultra-low power smart accessory projectors.

DMD power-up and power-down sequencing is strictly controlled by the DLPA1000. Refer to the [Power Supply Recommendations](#) for power-up and power-down specifications. The DLP2000 DMD reliability is only specified when used with the DLPC2607 controller and the DLPA1000 PMIC/LED Driver.

8.2 Typical Application

A common application for the DLP2000 chipset is creating a pico-projector embedded in a handheld product. For example, a pico-projector embedded in a smart phone, camera, battery powered mobile accessory, micro digital signage or IoT application. The DLPC2607 controller in the pico-projector receives images from a multimedia front end within the product as shown in [Figure 11](#).

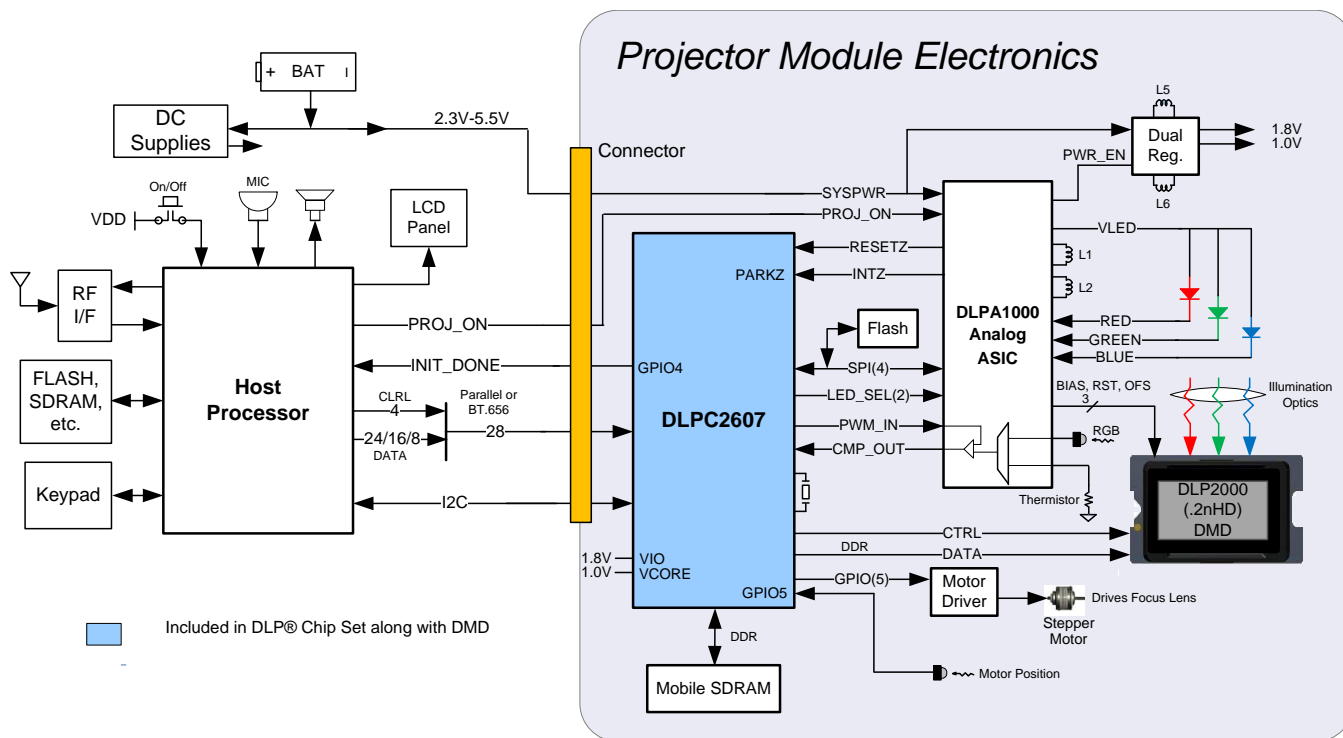


Figure 11. Block Diagram

Typical Application (continued)

8.2.1 Design Requirements

A pico-projector is created by using a DLP chip set comprised of the DLP2000 DMD, a DLPC2607 controller, and a DLPA1000 PMIC/LED driver. The DLPC2607 controller does the digital image processing, the DLPA1000 provides the needed analog functions for the projector, and the DLP2000 DMD is the display device producing the projected image.

In addition to the three DLP chips in the chipset, other chips may be needed. This includes a Flash part needed to store the software and firmware for controlling the DLPC2607 controller.

The illumination that is applied to the DMD is typically from red, green, and blue LEDs. These are often contained in three separate packages, but sometimes more than one color of LED die may be in the same package to reduce the overall size of the pico-projector.

When connecting the DLPC2607 controller to the multimedia front end to receive images, a parallel interface is used. When using the parallel interface, the I²C should be connected to the multimedia front end to send commands to the DLPC2607 controller and configure the DLPC2607 controller for different features.

8.2.2 Detailed Design Procedure

To connect the DLPC2607 controller, the DLPA1000, and the DLP2000 DMD, see the reference design schematic. A small circuit board layout is possible when using this schematic. An example small board layout is included in the reference design data base. Layout guidelines should be followed to achieve a reliable projector. An optical OEM who specializes in designing optics for DLP projectors typically supplies the optical engine that has the LED packages and the DMD mounted on it.

8.2.3 Application Curves

As the LED currents that are driven time-sequentially through the red, green, and blue LEDs are increased, the brightness of the projector increases. This increase is somewhat non-linear, and the curve for typical white screen lumens changes with LED currents is as shown in Figure 12. For the LED currents shown, it is assumed that the same current amplitude is applied to the red, green, and blue LEDs.

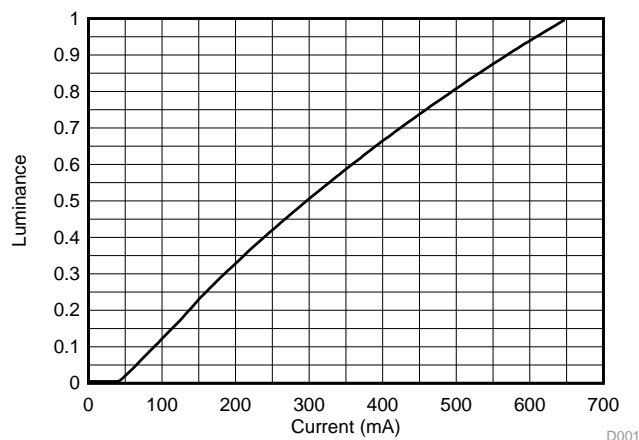


Figure 12. Luminance vs Current

9 Power Supply Recommendations

The following power supplies are all required to operate the DMD: V_{SS} , V_{CC} , V_{OFFSET} , V_{BIAS} , and V_{RESET} . DMD power-up and power-down sequencing is strictly controlled by the DLPA1000 device.

V_{CC} , V_{OFFSET} , V_{BIAS} , and V_{RESET} power supplies have to be coordinated during power-up and power-down operations. Failure to meet any of the following requirements will result in a significant reduction in the DMD's reliability and lifetime. Refer to [Figure 13](#).

CAUTION

For reliable operation of the DMD, the following power supply sequencing requirements must be followed. Failure to adhere to the prescribed power-up and power-down procedures may affect device reliability.

V_{CC} , V_{OFFSET} , V_{BIAS} , and V_{RESET} power supplies have to be coordinated during power-up and power-down operations. Failure to meet any of the following requirements will result in a significant reduction in the DMD's reliability and lifetime.

9.1 Power Supply Power-Up Procedure

- During Power-Up, V_{CC} must always start and settle before V_{OFFSET} , V_{BIAS} , and V_{RESET} voltages are applied to the DMD.
- During Power-Up, V_{BIAS} does not have to start after V_{OFFSET} . However, it is a strict requirement that the delta between V_{BIAS} and V_{OFFSET} must be within ± 8.75 V (Note 1).
- During Power-Up, the DMD's LVCMOS input pins shall not be driven high until after V_{CC} has settled at operating voltage.
- During Power-Up, there is no requirement for the relative timing of V_{RESET} with respect to V_{OFFSET} and V_{BIAS} .
- Slew Rates for Power-Up are flexible, as long as the transient voltage levels follow the requirements listed previously.

9.2 Power Supply Power-Down Procedure

- Power-Down sequence is the reverse order of the previous Power-Up sequence. V_{CC} must be supplied until after V_{BIAS} , V_{RESET} and V_{OFFSET} are discharged to within 4 V of ground.
- During Power-Down, it is not mandatory to stop driving V_{BIAS} prior to V_{OFFSET} , but it is a strict requirement that the delta between V_{BIAS} and V_{OFFSET} must be within ± 8.75 V (Note 1).
- During Power-Down, the DMD's LVCMOS input pins must be less than $V_{CC} + 0.3$ V.
- During Power-Down, there is no requirement for the relative timing of V_{RESET} with respect to V_{OFFSET} and V_{BIAS} .
- Slew Rates for Power-Down are flexible, as long as the transient voltage levels follow the requirements listed previously.

Power Supply Power-Down Procedure (continued)

Note 1

VBIAS, VOFFSET, and VRESET are disabled by DLP Display Controller software

Note 2

DMD_PWR_EN

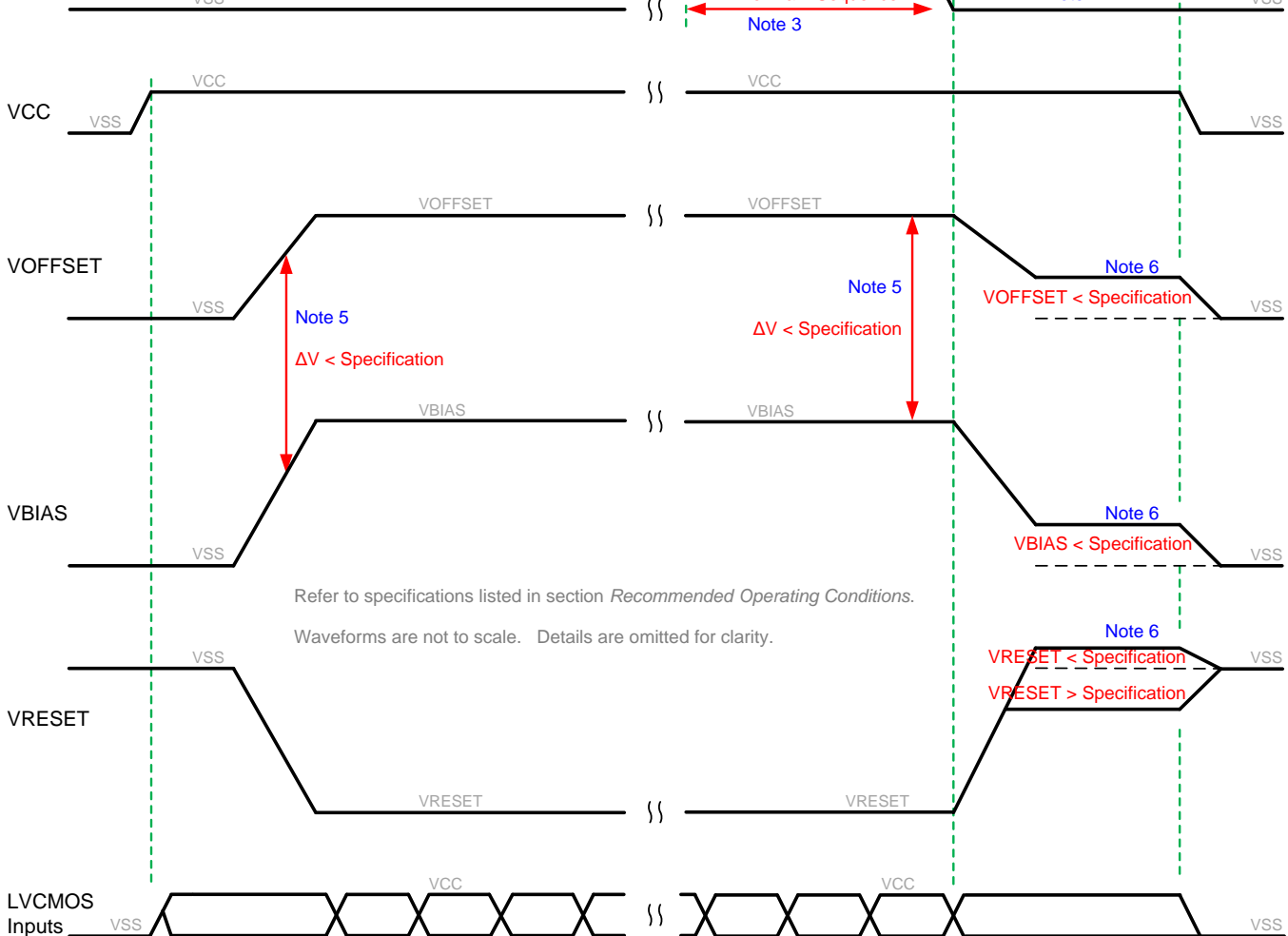


Figure 13. DMD Power Supply Sequencing Requirements

Note 1: Refer to specifications listed in the *Recommended Operating Conditions*. Waveforms are not to scale. Details are omitted for clarity.

Note 2: DMD_PWR_EN is not a package pin on the DMD. It is a signal from the DLP Display Controller (DLPC2607) that enables the V_{RESET} , V_{BIAS} , and V_{OFFSET} regulators on the system board.

Note 3: After the DMD micromirror park sequence is complete, the DLP display controller (DLPC2607) software initiates a hardware power-down that disables V_{BIAS} , V_{RESET} and V_{OFFSET} .

Note 4: During the micromirror parking process, V_{CC} , V_{BIAS} , V_{OFFSET} , and V_{RESET} power supplies are all required to be within the specification limits in the [Recommended Operating Conditions](#). Once the micromirrors are parked, V_{BIAS} , V_{OFFSET} , and V_{RESET} power supplies can be turned off.

Note 5: To prevent excess current, the supply voltage delta $|V_{BIAS} - V_{OFFSET}|$ must be less than specified in the [Recommended Operating Conditions](#). It is critical to meet this requirement and that V_{BIAS} not reach full power level until after V_{OFFSET} is at almost full power level. OEMs may find that the most reliable way to ensure this is to delay powering V_{BIAS} until after V_{OFFSET} is fully powered on during power-up (and to remove V_{BIAS} prior to V_{OFFSET} during power down). In this case, V_{OFFSET} is run at its maximum allowable voltage level (8.75 V).

Note 6: Refer to specifications listed in [Table 4](#).

Power Supply Power-Down Procedure (continued)

Table 4. DMD Power-Down Sequence Requirements

PARAMETER	DESCRIPTION	MIN	MAX	UNIT
V _{BIAS}	Supply voltage level during power-down sequence		4.0	V
V _{OFFSET}	Supply voltage level during power-down sequence		4.0	V
V _{RESET}	Supply voltage level during power-down sequence	–4.0	0.5	V

10 Layout

10.1 Layout Guidelines

There are no specific layout guidelines for the DMD, however the DMD is typically connected using a board to board connector with a flex cable. The flex cable provides an interface for data and control signals between the DLPC2607 controller and the DLP2000 DMD. For detailed layout guidelines refer to the DLPC2607 controller layout guidelines under PCB design and DMD interface considerations.

Some layout guidelines for the flex cable interface with the DMD are:

- Minimize the number of layer changes for DMD data and control signals.
- DMD data and control lines are DDR, whereas DMD_SAC and DMD_DRC lines are single data rate. Matching the DDR lines is more critical and should take precedence over matching single data rate lines.
- [Figure 14](#) and [Figure 15](#) show the top and bottom layer of the DMD flex cable connections.

10.2 Layout Example

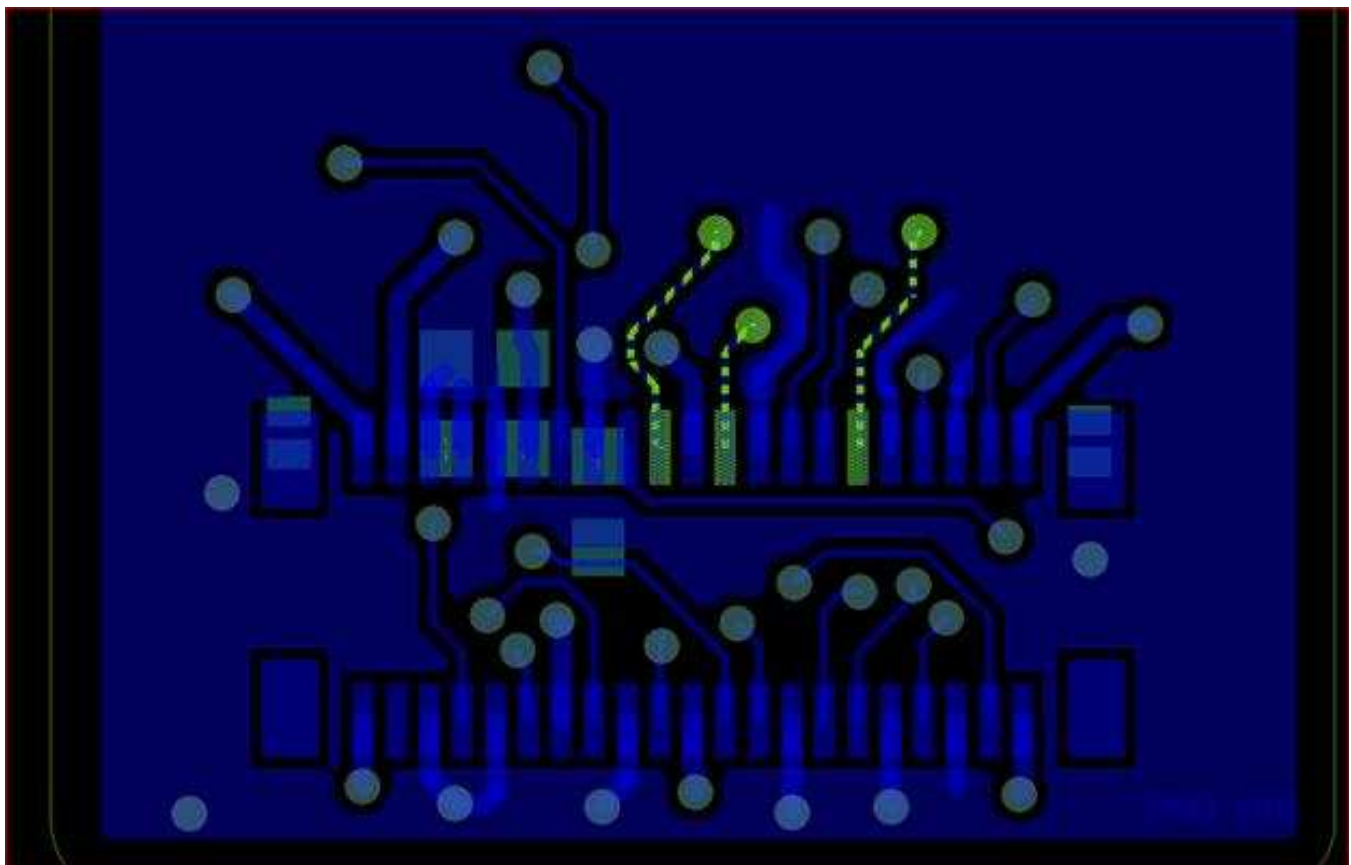


Figure 14. DMD Flex Cable - Top Layer

Layout Example (continued)

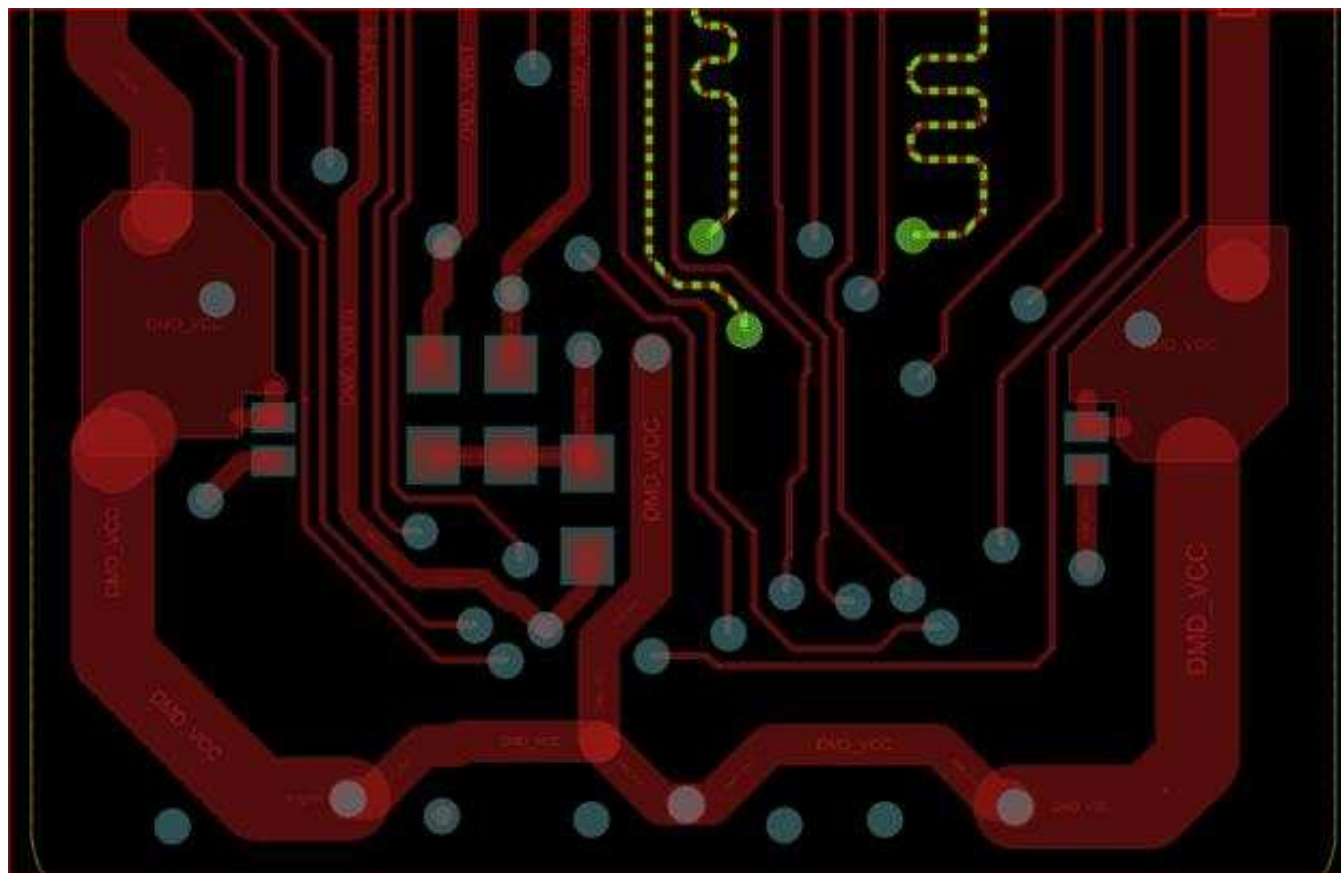


Figure 15. DMD Flex Cable - Bottom Layer

11 Device and Documentation Support

11.1 Device Support

11.1.1 Device Nomenclature

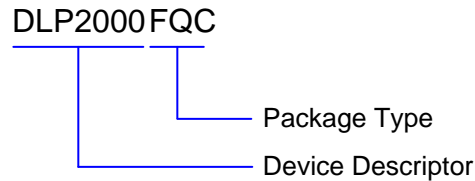


Figure 16. Part Number Description

11.1.2 Device Markings

- Device Marking will include the Human-Readable character string GHJJJK VVVV
- GHJJJK is the Lot Trace Code
- VVVV is a 4 character Encoded Device Part Number

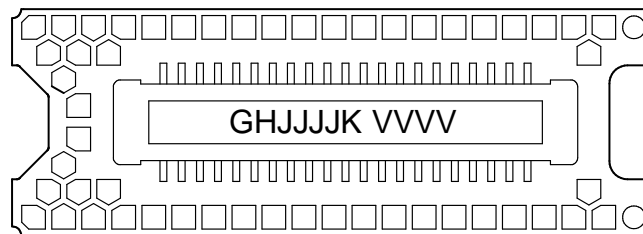


Figure 17. DMD Marking Location

11.2 Related Links

The table below lists quick access links. Categories include technical documents, support and community resources, tools and software, and quick access to sample or buy.

Table 5. Related Links

PARTS	PRODUCT FOLDER	SAMPLE & BUY	TECHNICAL DOCUMENTS	TOOLS & SOFTWARE	SUPPORT & COMMUNITY
DLPC2607	Click here	Click here	Click here	Click here	Click here
DLPA1000	Click here	Click here	Click here	Click here	Click here

11.3 Community Resources

The following links connect to TI community resources. Linked contents are provided "AS IS" by the respective contributors. They do not constitute TI specifications and do not necessarily reflect TI's views; see TI's [Terms of Use](#).

TI E2E™ Online Community *TI's Engineer-to-Engineer (E2E) Community*. Created to foster collaboration among engineers. At e2e.ti.com, you can ask questions, share knowledge, explore ideas and help solve problems with fellow engineers.

Design Support *TI's Design Support* Quickly find helpful E2E forums along with design support tools and contact information for technical support.

11.4 Trademarks

E2E is a trademark of Texas Instruments.

11.5 Electrostatic Discharge Caution



These devices have limited built-in ESD protection. The leads should be shorted together or the device placed in conductive foam during storage or handling to prevent electrostatic damage to the MOS gates.

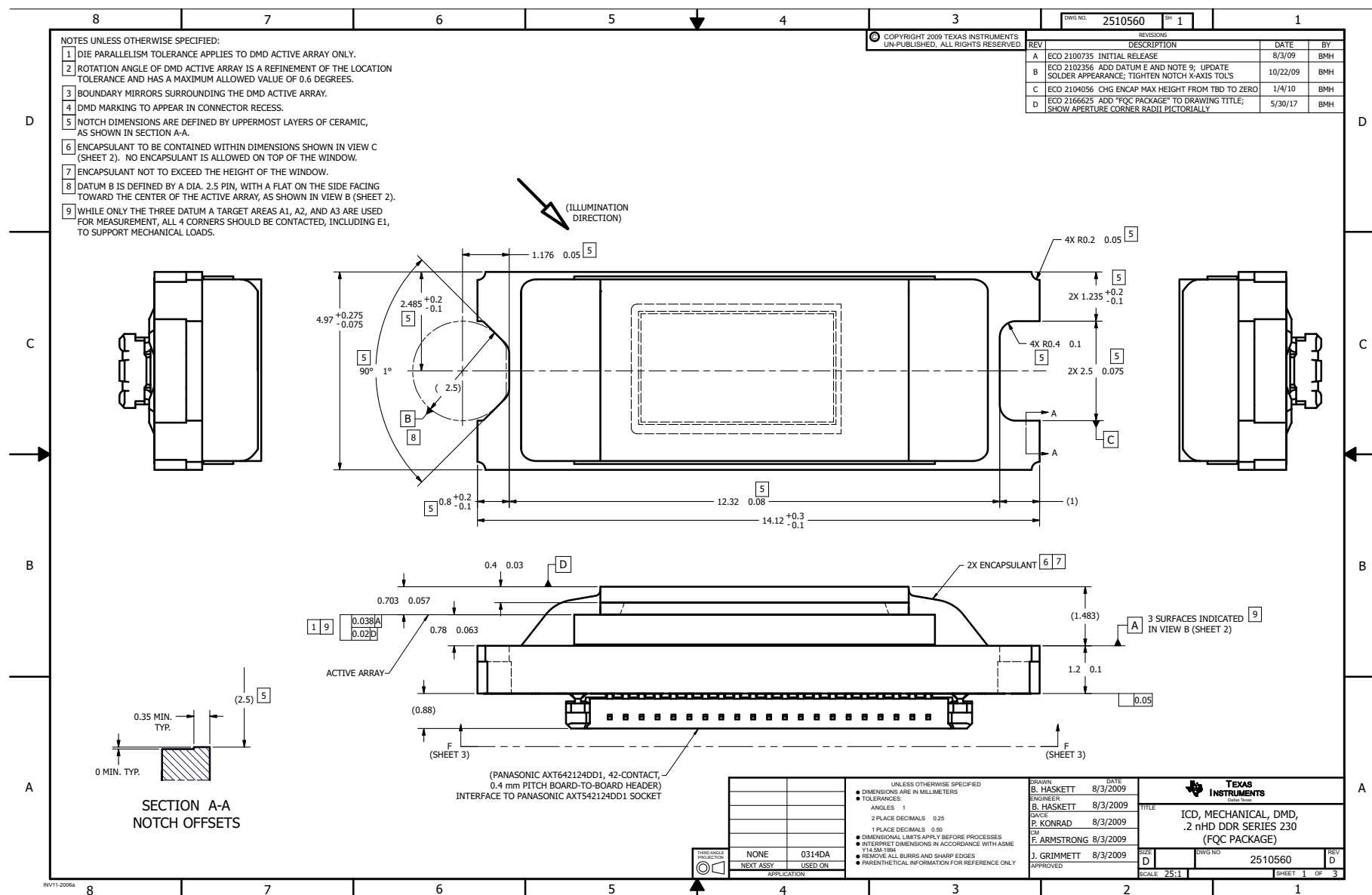
11.6 Glossary

[SLYZ022](#) — *TI Glossary*.

This glossary lists and explains terms, acronyms, and definitions.

12 Mechanical, Packaging, and Orderable Information

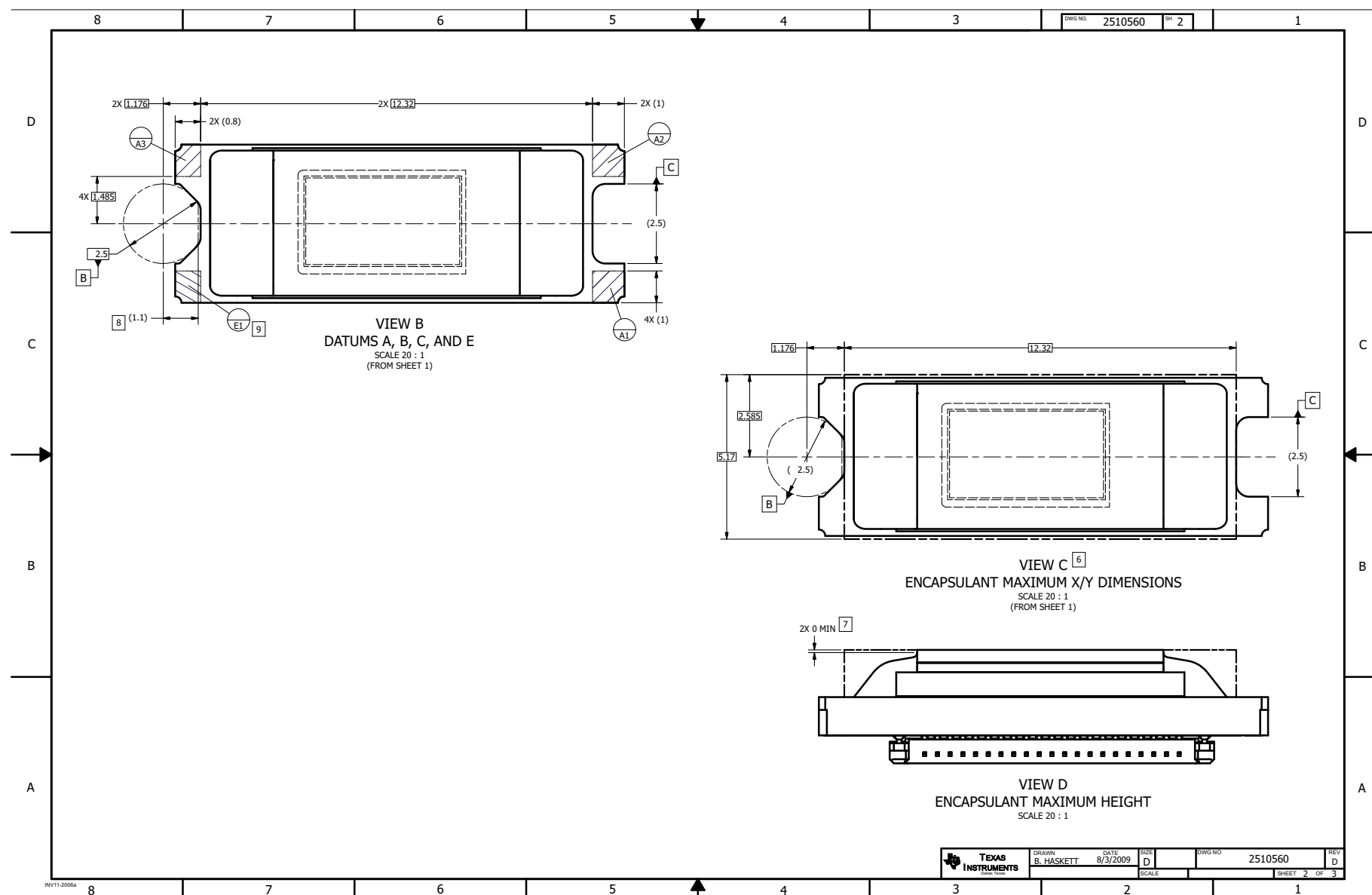
The following pages include mechanical, packaging, and orderable information. This information is the most current data available for the designated devices. This data is subject to change without notice and revision of this document. For browser-based versions of this data sheet, refer to the left-hand navigation.

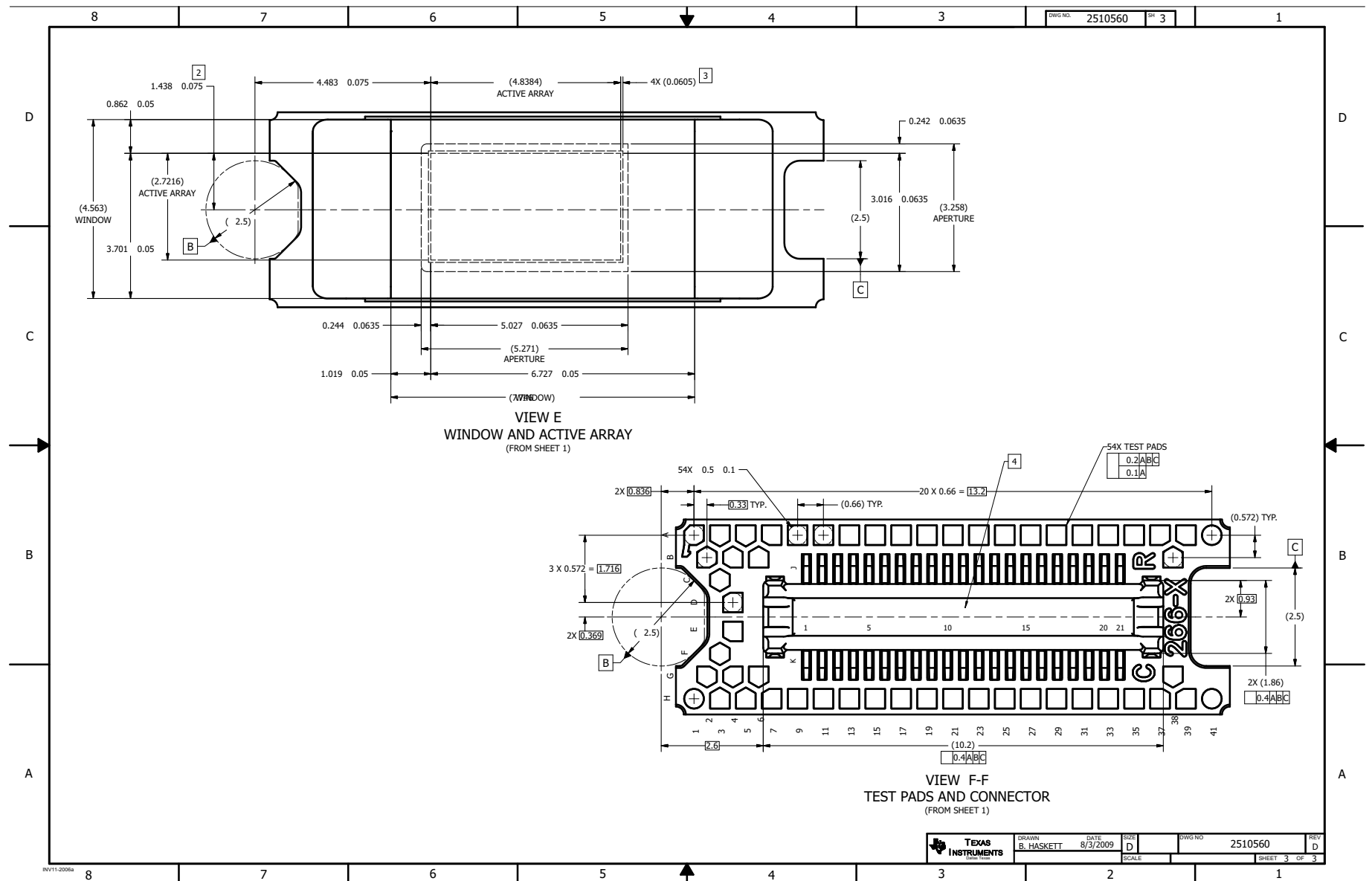


DLP2000

DLPS078 –JULY 2017

www.ti.com





PACKAGING INFORMATION

Orderable Device	Status (1)	Package Type	Package Drawing	Pins	Package Qty	Eco Plan (2)	Lead/Ball Finish (6)	MSL Peak Temp (3)	Op Temp (°C)	Device Marking (4/5)	Samples
DLP2000FQC	ACTIVE	CLGA	FQC	42	180	RoHS & Green	Call TI	Level-1-NC-NC	0 to 70		Samples

(1) The marketing status values are defined as follows:

ACTIVE: Product device recommended for new designs.

LIFEBUY: TI has announced that the device will be discontinued, and a lifetime-buy period is in effect.

NRND: Not recommended for new designs. Device is in production to support existing customers, but TI does not recommend using this part in a new design.

PREVIEW: Device has been announced but is not in production. Samples may or may not be available.

OBSOLETE: TI has discontinued the production of the device.

(2) **RoHS:** TI defines "RoHS" to mean semiconductor products that are compliant with the current EU RoHS requirements for all 10 RoHS substances, including the requirement that RoHS substance do not exceed 0.1% by weight in homogeneous materials. Where designed to be soldered at high temperatures, "RoHS" products are suitable for use in specified lead-free processes. TI may reference these types of products as "Pb-Free".

RoHS Exempt: TI defines "RoHS Exempt" to mean products that contain lead but are compliant with EU RoHS pursuant to a specific EU RoHS exemption.

Green: TI defines "Green" to mean the content of Chlorine (Cl) and Bromine (Br) based flame retardants meet JS709B low halogen requirements of <=1000ppm threshold. Antimony trioxide based flame retardants must also meet the <=1000ppm threshold requirement.

(3) MSL, Peak Temp. - The Moisture Sensitivity Level rating according to the JEDEC industry standard classifications, and peak solder temperature.

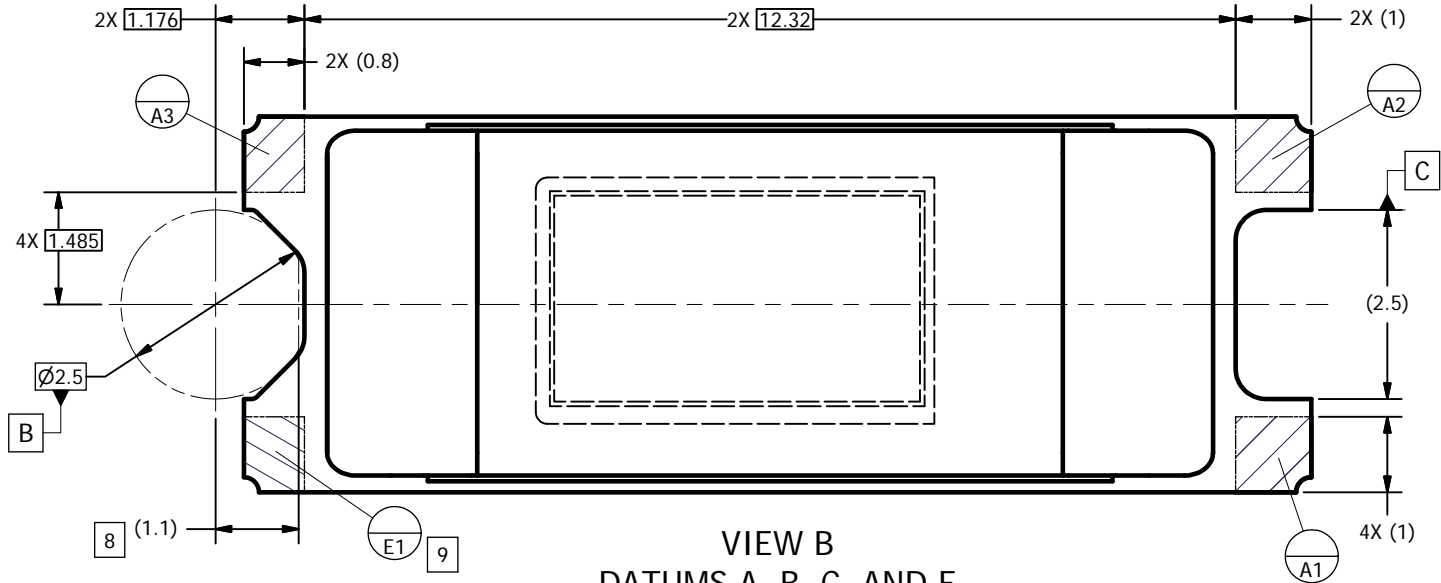
(4) There may be additional marking, which relates to the logo, the lot trace code information, or the environmental category on the device.

(5) Multiple Device Markings will be inside parentheses. Only one Device Marking contained in parentheses and separated by a "~" will appear on a device. If a line is indented then it is a continuation of the previous line and the two combined represent the entire Device Marking for that device.

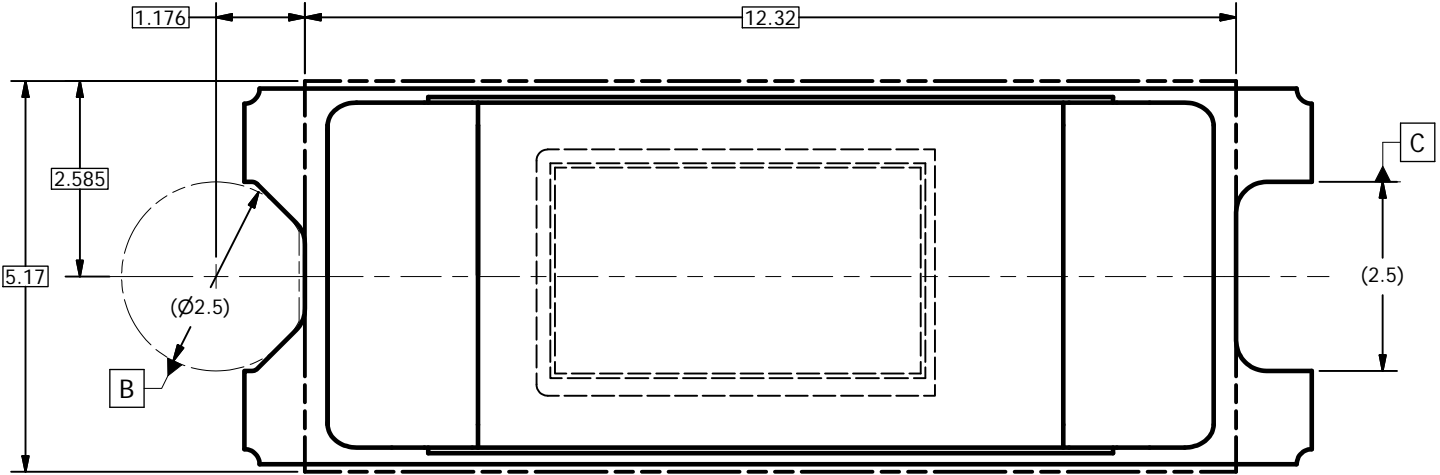
(6) Lead/Ball Finish - Orderable Devices may have multiple material finish options. Finish options are separated by a vertical ruled line. Lead/Ball Finish values may wrap to two lines if the finish value exceeds the maximum column width.

Important Information and Disclaimer: The information provided on this page represents TI's knowledge and belief as of the date that it is provided. TI bases its knowledge and belief on information provided by third parties, and makes no representation or warranty as to the accuracy of such information. Efforts are underway to better integrate information from third parties. TI has taken and continues to take reasonable steps to provide representative and accurate information but may not have conducted destructive testing or chemical analysis on incoming materials and chemicals. TI and TI suppliers consider certain information to be proprietary, and thus CAS numbers and other limited information may not be available for release.

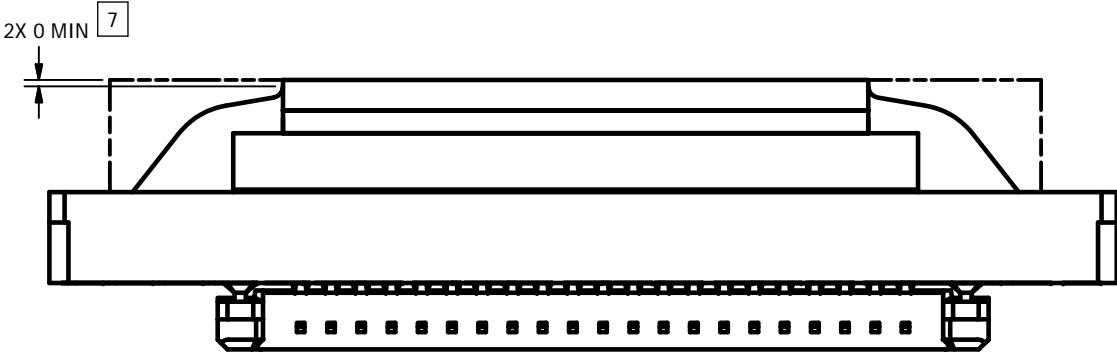
In no event shall TI's liability arising out of such information exceed the total purchase price of the TI part(s) at issue in this document sold by TI to Customer on an annual basis.



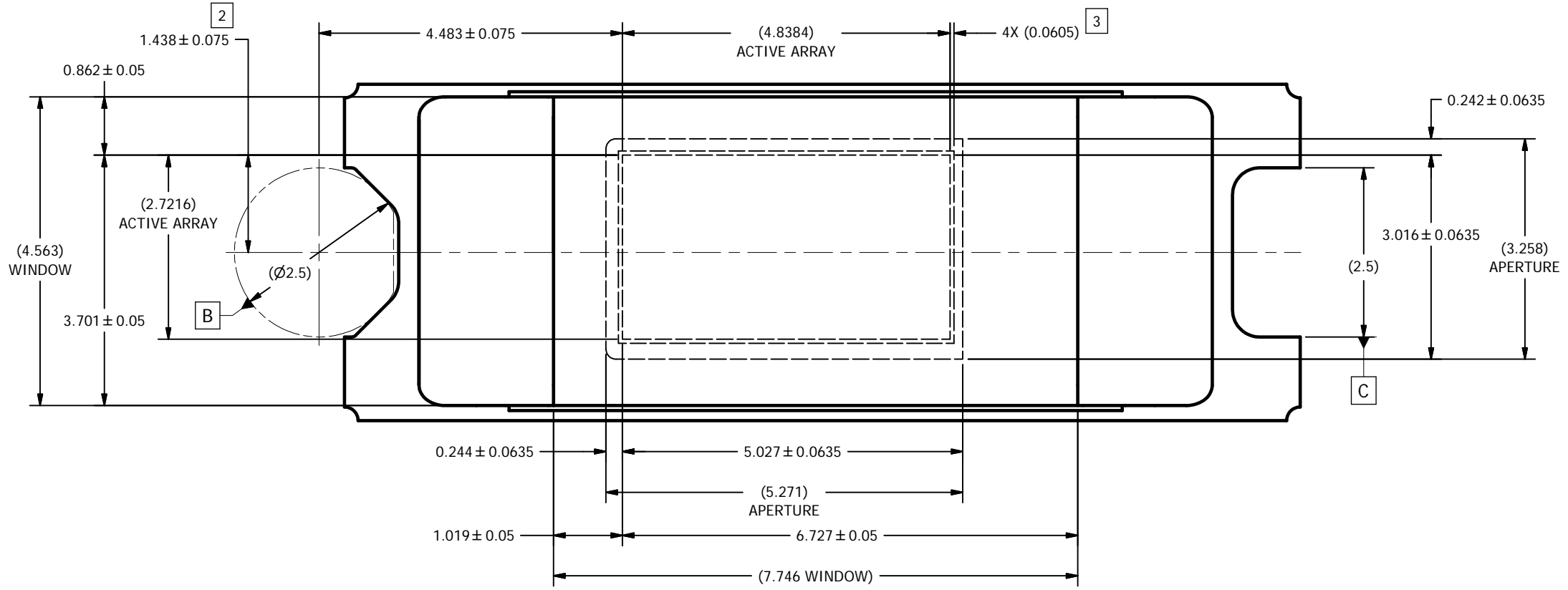
VIEW B
DATUMS A, B, C, AND E
SCALE 20 : 1
(FROM SHEET 1)



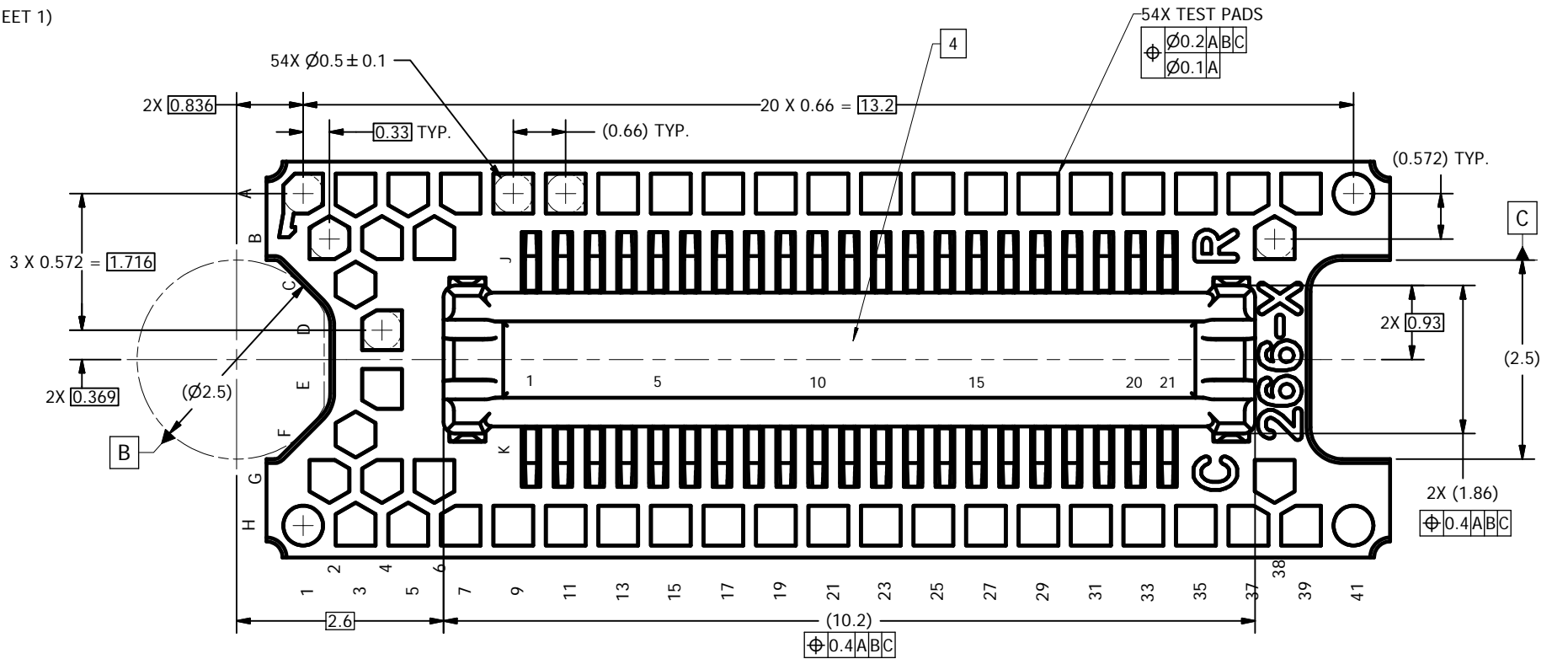
VIEW C 6
ENCAPSULANT MAXIMUM X/Y DIMENSIONS
SCALE 20 : 1
(FROM SHEET 1)



VIEW D
ENCAPSULANT MAXIMUM HEIGHT
SCALE 20 : 1



VIEW E
WINDOW AND ACTIVE ARRAY
(FROM SHEET 1)



VIEW F-F
TEST PADS AND CONNECTOR
(FROM SHEET 1)

IMPORTANT NOTICE

Texas Instruments Incorporated (TI) reserves the right to make corrections, enhancements, improvements and other changes to its semiconductor products and services per JESD46, latest issue, and to discontinue any product or service per JESD48, latest issue. Buyers should obtain the latest relevant information before placing orders and should verify that such information is current and complete.

TI's published terms of sale for semiconductor products (<http://www.ti.com/sc/docs/stdterms.htm>) apply to the sale of packaged integrated circuit products that TI has qualified and released to market. Additional terms may apply to the use or sale of other types of TI products and services.

Reproduction of significant portions of TI information in TI data sheets is permissible only if reproduction is without alteration and is accompanied by all associated warranties, conditions, limitations, and notices. TI is not responsible or liable for such reproduced documentation. Information of third parties may be subject to additional restrictions. Resale of TI products or services with statements different from or beyond the parameters stated by TI for that product or service voids all express and any implied warranties for the associated TI product or service and is an unfair and deceptive business practice. TI is not responsible or liable for any such statements.

Buyers and others who are developing systems that incorporate TI products (collectively, "Designers") understand and agree that Designers remain responsible for using their independent analysis, evaluation and judgment in designing their applications and that Designers have full and exclusive responsibility to assure the safety of Designers' applications and compliance of their applications (and of all TI products used in or for Designers' applications) with all applicable regulations, laws and other applicable requirements. Designer represents that, with respect to their applications, Designer has all the necessary expertise to create and implement safeguards that (1) anticipate dangerous consequences of failures, (2) monitor failures and their consequences, and (3) lessen the likelihood of failures that might cause harm and take appropriate actions. Designer agrees that prior to using or distributing any applications that include TI products, Designer will thoroughly test such applications and the functionality of such TI products as used in such applications.

TI's provision of technical, application or other design advice, quality characterization, reliability data or other services or information, including, but not limited to, reference designs and materials relating to evaluation modules, (collectively, "TI Resources") are intended to assist designers who are developing applications that incorporate TI products; by downloading, accessing or using TI Resources in any way, Designer (individually or, if Designer is acting on behalf of a company, Designer's company) agrees to use any particular TI Resource solely for this purpose and subject to the terms of this Notice.

TI's provision of TI Resources does not expand or otherwise alter TI's applicable published warranties or warranty disclaimers for TI products, and no additional obligations or liabilities arise from TI providing such TI Resources. TI reserves the right to make corrections, enhancements, improvements and other changes to its TI Resources. TI has not conducted any testing other than that specifically described in the published documentation for a particular TI Resource.

Designer is authorized to use, copy and modify any individual TI Resource only in connection with the development of applications that include the TI product(s) identified in such TI Resource. NO OTHER LICENSE, EXPRESS OR IMPLIED, BY ESTOPPEL OR OTHERWISE TO ANY OTHER TI INTELLECTUAL PROPERTY RIGHT, AND NO LICENSE TO ANY TECHNOLOGY OR INTELLECTUAL PROPERTY RIGHT OF TI OR ANY THIRD PARTY IS GRANTED HEREIN, including but not limited to any patent right, copyright, mask work right, or other intellectual property right relating to any combination, machine, or process in which TI products or services are used. Information regarding or referencing third-party products or services does not constitute a license to use such products or services, or a warranty or endorsement thereof. Use of TI Resources may require a license from a third party under the patents or other intellectual property of the third party, or a license from TI under the patents or other intellectual property of TI.

TI RESOURCES ARE PROVIDED "AS IS" AND WITH ALL FAULTS. TI DISCLAIMS ALL OTHER WARRANTIES OR REPRESENTATIONS, EXPRESS OR IMPLIED, REGARDING RESOURCES OR USE THEREOF, INCLUDING BUT NOT LIMITED TO ACCURACY OR COMPLETENESS, TITLE, ANY EPIDEMIC FAILURE WARRANTY AND ANY IMPLIED WARRANTIES OF MERCHANTABILITY, FITNESS FOR A PARTICULAR PURPOSE, AND NON-INFRINGEMENT OF ANY THIRD PARTY INTELLECTUAL PROPERTY RIGHTS. TI SHALL NOT BE LIABLE FOR AND SHALL NOT DEFEND OR INDEMNIFY DESIGNER AGAINST ANY CLAIM, INCLUDING BUT NOT LIMITED TO ANY INFRINGEMENT CLAIM THAT RELATES TO OR IS BASED ON ANY COMBINATION OF PRODUCTS EVEN IF DESCRIBED IN TI RESOURCES OR OTHERWISE. IN NO EVENT SHALL TI BE LIABLE FOR ANY ACTUAL, DIRECT, SPECIAL, COLLATERAL, INDIRECT, PUNITIVE, INCIDENTAL, CONSEQUENTIAL OR EXEMPLARY DAMAGES IN CONNECTION WITH OR ARISING OUT OF TI RESOURCES OR USE THEREOF, AND REGARDLESS OF WHETHER TI HAS BEEN ADVISED OF THE POSSIBILITY OF SUCH DAMAGES.

Unless TI has explicitly designated an individual product as meeting the requirements of a particular industry standard (e.g., ISO/TS 16949 and ISO 26262), TI is not responsible for any failure to meet such industry standard requirements.

Where TI specifically promotes products as facilitating functional safety or as compliant with industry functional safety standards, such products are intended to help enable customers to design and create their own applications that meet applicable functional safety standards and requirements. Using products in an application does not by itself establish any safety features in the application. Designers must ensure compliance with safety-related requirements and standards applicable to their applications. Designer may not use any TI products in life-critical medical equipment unless authorized officers of the parties have executed a special contract specifically governing such use. Life-critical medical equipment is medical equipment where failure of such equipment would cause serious bodily injury or death (e.g., life support, pacemakers, defibrillators, heart pumps, neurostimulators, and implantables). Such equipment includes, without limitation, all medical devices identified by the U.S. Food and Drug Administration as Class III devices and equivalent classifications outside the U.S.

TI may expressly designate certain products as completing a particular qualification (e.g., Q100, Military Grade, or Enhanced Product). Designers agree that it has the necessary expertise to select the product with the appropriate qualification designation for their applications and that proper product selection is at Designers' own risk. Designers are solely responsible for compliance with all legal and regulatory requirements in connection with such selection.

Designer will fully indemnify TI and its representatives against any damages, costs, losses, and/or liabilities arising out of Designer's non-compliance with the terms and provisions of this Notice.