

SACC-E-MINFS-3CON-PG13/2,0 - Flush-type connector



1424029

<https://www.phoenixcontact.com/us/products/1424029>

Please be informed that the data shown in this PDF document is generated from our online catalog. Please find the complete data in the user documentation. Our general terms of use for downloads are valid.



Sensor/actuator flush-type socket, 3-pos., 7/8", front mounting with Pg13.5 thread, with 2.0 m PVC litz wire, 3 x 0.75 mm²

Commercial data

Item number	1424029
Packing unit	1 pc
Note	Made to order (non-returnable)
Sales key	A11
Product key	ABQPAA
GTIN	4046356666749
Weight per piece (including packing)	126.7 g
Weight per piece (excluding packing)	126.7 g
Customs tariff number	85366990
Country of origin	DE

SACC-E-MINFS-3CON-PG13/2,0 - Flush-type connector



1424029

<https://www.phoenixcontact.com/us/products/1424029>

Technical data

Mounting

Mounting type	Front mounting
---------------	----------------

Product properties

Product type	Circular connectors (device side)
Sensor type	Universal
Number of positions	3
No. of cable outlets	1
Shielded	no
Coding	7/8"-16UNF

Insulation characteristics

Overvoltage category	II
Degree of pollution	3

Material specifications

Flammability rating according to UL 94	HB
Seal material	Viton
Contact material	CuZn
Contact surface material	Au
Contact carrier material	PUR
Material for screw connection	Zinc die-cast, nickel-plated

Electrical properties

Contact resistance	$\leq 5 \text{ m}\Omega$
Insulation resistance	$\geq 100 \text{ M}\Omega$
Nominal voltage U_N	250 V
Nominal current I_N	12 A

Connector

Connection 1

Head design	Plug
Head cable outlet	straight
Head thread type	7/8"-16UNF

Connection 2

Head design	free cable end
-------------	----------------

Cable/line

Cable length	2 m
Signal type/category	Universal
Wire diameter incl. insulation	2.7 mm

SACC-E-MINFS-3CON-PG13/2,0 - Flush-type connector



1424029

<https://www.phoenixcontact.com/us/products/1424029>

Single wire, color	green/yellow, brown, blue
Cable cross section	0.75 mm ²
Conductor structure signal line	24x 0.20 mm
AWG signal line	18
Thickness, insulation	0.85 mm (Core insulation)
Ambient temperature (operation)	-40 °C ... 85 °C (cable, fixed installation)

Environmental and real-life conditions

Ambient conditions

Degree of protection	IP67
	IP67
Ambient temperature (operation)	-40 °C ... 85 °C (Socket)
	-40 °C ... 85 °C (cable, fixed installation)

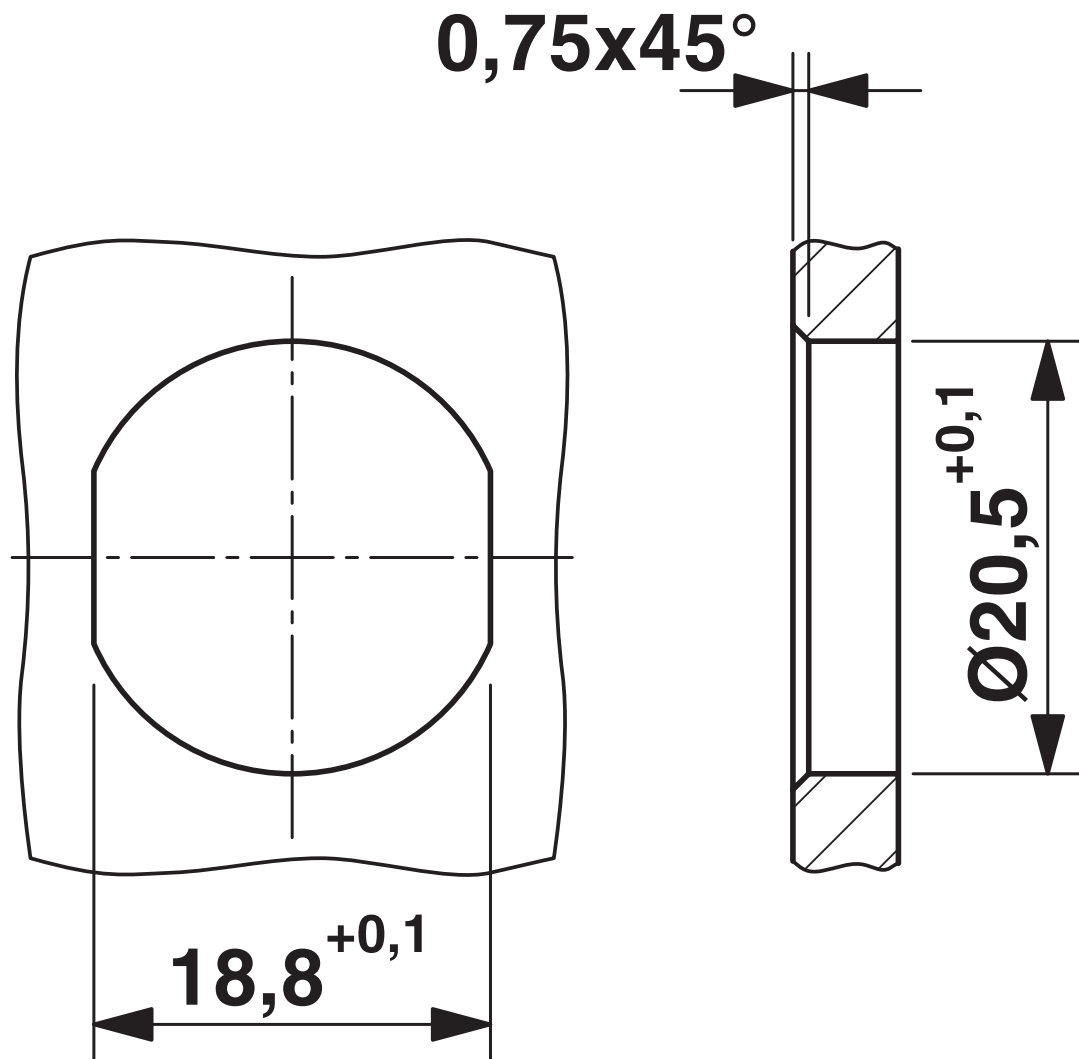
SACC-E-MINFS-3CON-PG13/2,0 - Flush-type connector

1424029

<https://www.phoenixcontact.com/us/products/1424029>

Drawings

Dimensional drawing



Mounting panel with feed-through hole

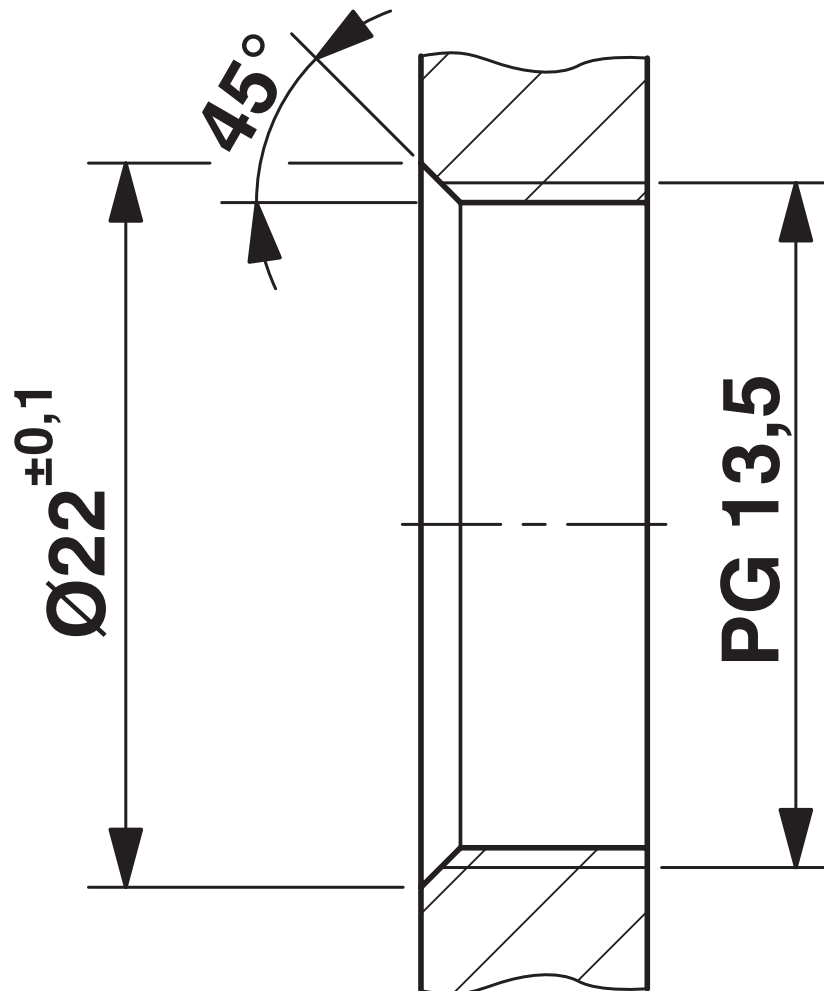
SACC-E-MINFS-3CON-PG13/2,0 - Flush-type connector



1424029

<https://www.phoenixcontact.com/us/products/1424029>

Dimensional drawing



Mounting panel with thread

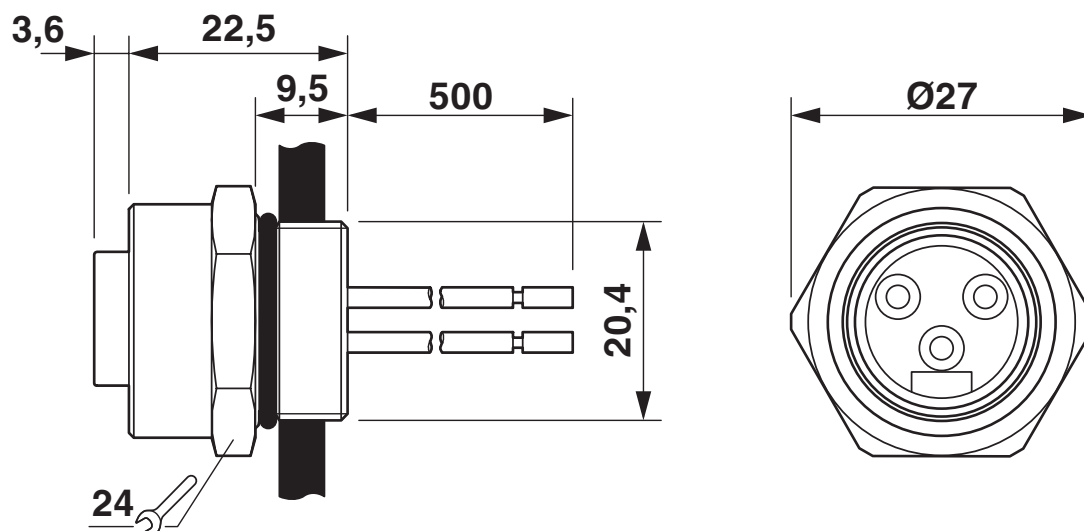
SACC-E-MINFS-3CON-PG13/2,0 - Flush-type connector



1424029

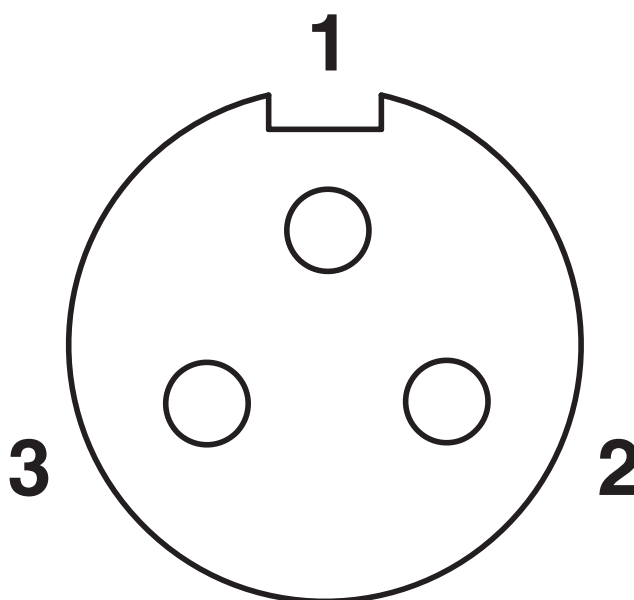
<https://www.phoenixcontact.com/us/products/1424029>

Dimensional drawing



7/8" flush-type plug

Schematic diagram



Pin assignment, socket, 7/8"-16UNF, 3-pos., view of female side

1424029
<https://www.phoenixcontact.com/us/products/1424029>

Environmental product compliance

EU RoHS	
Fulfills EU RoHS substance requirements	Yes
Exemption	6(c)
China RoHS	
Environment friendly use period (EFUP)	EFUP-50
	An article-related China RoHS declaration table can be found in the download area for the respective article under "Manufacturer declaration". For all articles with EFUP-E, no China RoHS declaration table issued and required.
EU REACH SVHC	
REACH candidate substance (CAS No.)	Lead(CAS: 7439-92-1)

Phoenix Contact 2024 © - all rights reserved
<https://www.phoenixcontact.com>

Phoenix Contact USA
586 Fulling Mill Road
Middletown, PA 17057, United States
(+717) 944-1300
info@phoenixcon.com