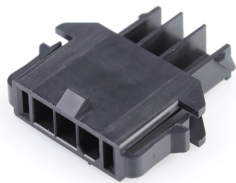




Part Number : [2004880003](#)
Product Description : Mini-Fit TPA2 Plug Housing, 4.20mm Pitch, Single Row, UL 94V-0, Low-Halogen, Panel Mount, 3 Circuits
Series Number : 200488
Status : Active
Product Category : Connector Housings



Documents & Resources

Drawings
[Drawing 2004880003_sd.pdf](#)
[Packaging Design Drawing 2004880000-PK-000.pdf](#)

3D Models and Design Files
[3D Model 2004880003_stp.zip](#)

Specifications
[Application Specification AS-172718-0000-001.pdf](#)
[Product Specification PS-172718-0000-001.pdf](#)
[Test Summary 1727180002-TS-000.pdf](#)

Product Environment Compliance

Compliance

GADSL/IMDS	Not Relevant
China RoHS	Not Relevant
EU ELV	Not Relevant
Low-Halogen Status	Not Relevant
REACH SVHC	Not Contained per D(2024)4144-DC (27 June 2024)
EU RoHS	Compliant per EU 2015/863

Multiple Part Product Compliance Statements
- Eu RoHS
- REACH SVHC
- Low-Halogen

Multiple Part Industry Compliance Documents
- IPC 1752A Class C

- IPC 1752A Class D
- Molex Product Compliance Declaration
- IEC-62474
- chemSHERPA (xml)

EU RoHS Certificate of Compliance

Part Details

General

Status	Active
Category	Connector Housings
Series	200488
Description	Mini-Fit TPA2 Plug Housing, 4.20mm Pitch, Single Row, UL 94V-0, Low-Halogen, Panel Mount, 3 Circuits
Application	Power, Wire-to-Board, Wire-to-Wire
Comments	See product specification for current derating information.
Product Family	Mini-Fit Family Power Connectors
Product Name	Mini-Fit TPA2
UPC	889056436434

Agency

UL	E29179
----	--------

Physical

Circuits (maximum)	3
Color - Resin	Black
Flammability	94V-0
Gender	Plug
Glow-Wire Capable	No
Lock to Mating Part	Yes
Material - Resin	Nylon
Net Weight	1.670/g
Number of Rows	1
Packaging Type	Bag
Panel Mount	Yes

Pitch - Mating Interface	4.20mm
Pitch - Termination Interface	4.20mm
Polarized to Mating Part	Yes
Stackable	No
Temperature Range - Operating	-40° to +105°C

Mates With / Use With

Mates with Part(s)

Description	Part Number
Mini-Fit TPA2 and Mini-Fit Sigma Single Row Receptacle Housings	<u>200453</u>
Mini-Fit Jr. Receptacle Housings	<u>5557</u>
Mini-Fit TPA2-to-Mini-Fit TPA2 Off-the-Shelf (OTS) Cable Assemblies	<u>145135</u>

Use with Part(s)

Description	Part Number
Mini-Fit TPA2/Sigma Male Crimp Terminals	<u>172765</u>
Mini-Fit TPA2 and Mini-Fit Sigma Terminal Position Assurance (TPA) Retainers	<u>172709</u>