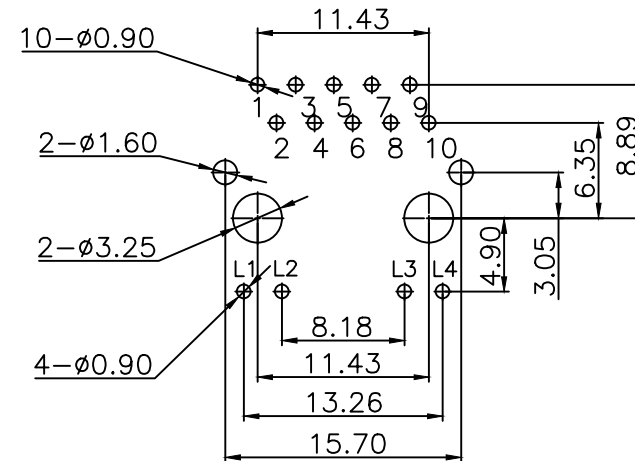
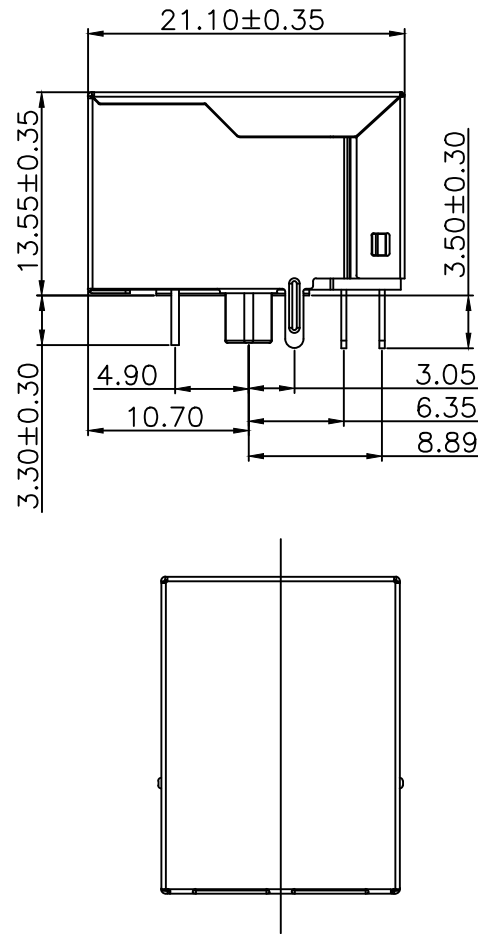
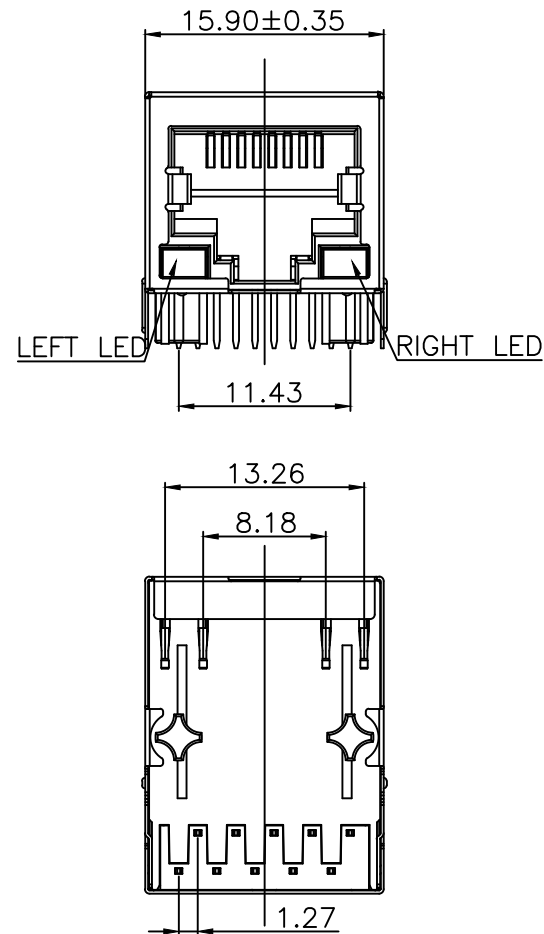


F  
E  
D  
C  
B  
A



Recommended PCB Layout  
(Tolerance:±0.05)

- 1.Material:
- 1.1 Housing: PBT UL94V-0 Black.  
Insert: PBT UL94V-0 Black.
  - 1.2 Shell: Stainless steel ,SUS 201.
  - 1.3 RJ45 Terminal:Phosphor Bronze(C5191) T=0.35mm  
Plating:6u" Gold Plated On Contact Area,  
80u" ~120u" Tin Plated On Solder Area,  
30u" ~50u" Ni Underplated Overall.
  - 1.4 Tail Terminal: Brass(C2680) T=0.35mm,  
Plating: 80u" ~120u" Tin Plated Over,  
30u" ~50u" Ni Underplated Overall.
- 2.Environmental requirements:
- 2.1 Lead-free process,compliant RoHS.

广州托克马斯电子有限公司

GENERAL TOLERANCE	
X.°±5.0°	X.±0.38
.X.°±3.0°	.X±0.30
.XX°±2.0°	.XX±0.25
.XXX°±1.0°	.XXX±0.15

DESIGNED: Joan.Zhao

DATE: 2025.02.17

DWG. NO.

HY911130

CHECKED: Joan.Zhao

DATE: 2025.02.17

PART NO.

HY911130

APPROVED: Sunny.F

DATE: 2025.02.17

TITLE.

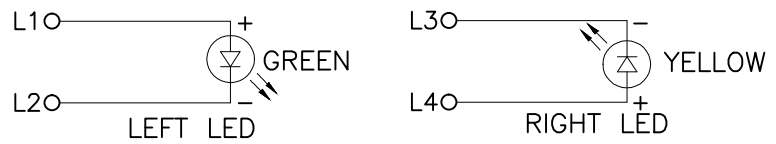
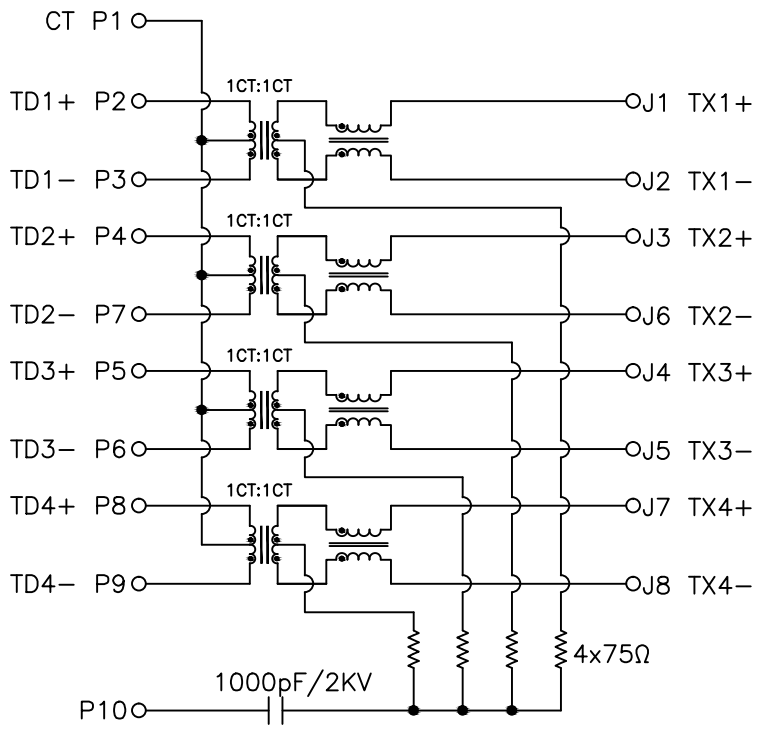
A10-RJ45 1x1 Dip Tab Down  
Giga Base With LED 6u" NS

F  
E  
D  
C  
B  
A

REV.	LOCAS.	DESCRIPTION	DRAWN	DATE
A	NEW	BATCH PRODUCTION INITIAL RELEASE.	Joan.Zhao	2025.02.17

PCB CONNECTIONS

RJ45 CONNECTIONS



Emitting Color	$\lambda_p(\text{nm})$	$V_f@I_f=20\text{mA}$
Green	565	1.8–2.5V
YELLOW	585	1.8–2.5V

- 3.Electrical Specification @25°C:
- 3.1 Inductance: 350uH Min With 8mA DC bias.
  - 3.2 Insertion loss :
    - 1–60MHZ      –1.0dB max.
    - 60–100MHZ    –1.1dB max.
  - 3.3 Return loss :
    - 0.3–30MHZ      –18dB min.
    - 40–60MHZ      –14dB min.
    - 80–100MHZ     –12dB min.
  - 3.4 Common Mode Rejection:1–100MHZ    –35dB min.
  - 3.5 Cross Talk:1–100MHZ    –24dB min.
- 4.Operating and Storage Temperature:
- 4.1 Operating Temperature : –40°C to +85°C.
  - 4.2 Storage Temperature : –40°C to +85°C.
- 5.Wave soldering peak temperature:260°C.

广州托克马斯电子有限公司					GENERAL TOLERANCE		DESIGNED: Joan.Zhao	DATE: 2025.02.17	DWG. NO.	TITLE. A10–RJ45 1x1 Dip Tab Down Giga Base With LED 6u” NS
					X.*±5.0°	X.±0.38			HY911130	
					.X*±3.0°	.X±0.30	CHECKED: Joan.Zhao	DATE: 2025.02.17		
					.XX*±2.0°	.XX±0.25			PART NO.	
REV.	UNIT.	SCALE.	PAGE.		.XXX*±1.0°	.XXX±0.15	APPROVED: Sunny.F	DATE: 2025.02.17	HY911130	
A	mm	1:1	2/2							