



**Part Number :** [1731091892](#)  
**Product Description :** FCT Standard-Density D-Sub Connector, Female, Straight, PCB Through Hole, 10.30mm Tail Length, Gold over Nickel Phosphorus Plating, 500 Mating Cycles, 5.60mm Snap-in Bolt, 9 Circuits, White Insulator  
**Series Number :** 173109  
**Status :** Active  
**Product Category :** D-Sub Connectors  
**Engineering Number :** F09S1G1A-0981

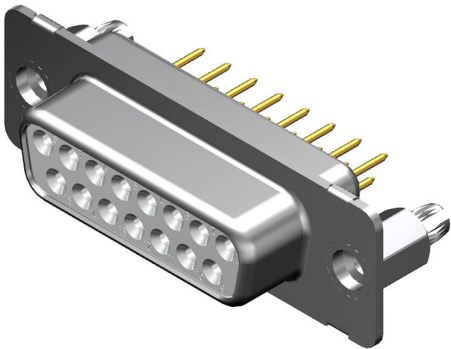


Illustration only.  
The pole size may deviate from the image.


## Documents & Resources

**Drawings**  
[1731091892\\_sd.pdf](#)

**3D Models and Design Files**  
[1731091892\\_stp.zip](#)

## Product Environment Compliance

### Compliance

GADSL/IMDS	Not Relevant
China RoHS	
EU ELV	Not Relevant
Low-Halogen Status	Not Reviewed per IEC 61249-2-21
REACH SVHC	Contains Lead per D(2021)10043-DC (17 Jan 2022)
EU RoHS	Compliant with Exemption 6(c) per EU 2015/863

### Multiple Part Product Compliance Statements

- Eu RoHS
- REACH SVHC
- Low-Halogen

### Multiple Part Industry Compliance Documents

- IPC 1752A Class C

- IPC 1752A Class D
- Molex Product Compliance Declaration
- IEC-62474
- chemSHERPA (xml)

## EU RoHS Certificate of Compliance

---

### Part Details

#### General

Status	Active
Category	D-Sub Connectors
Series	173109
Description	FCT Standard-Density D-Sub Connector, Female, Straight, PCB Through Hole, 10.30mm Tail Length, Gold over Nickel Phosphorus Plating, 500 Mating Cycles, 5.60mm Snap-in Bolt, 9 Circuits, White Insulator
IP Rating	IP20
Magnetic	Yes
Product Name	FCT Products
Type	Standard Density
UPC	191130143450

#### Electrical

Current - Maximum per Contact	7.5A
Shielded	Yes

#### Physical

Circuits (Loaded)	9
Circuits (maximum)	9
Color - Resin	White
Durability (mating cycles max)	500
Gender	Female
Material - Contact	Copper Alloy
Material - Resin	PBT
Material - Shell	Steel
Net Weight	7.000/g

Number of Rows	2
Orientation	Straight
Packaging Type	Carton
Panel Mount	Rear
Panel Mount Method	Thread-In
PC Tail Length	10.30mm
PCB Locator	Yes
PCB Retention	Yes
PCB Thickness - Recommended	1.60mm
Pitch - Mating Interface	2.84mm
Pitch - Termination Interface	2.84mm
Plating - Contact	Gold over Nickel Phosphorus
Plating - Shell	Tin
Polarized to Mating Part	Yes
Polarized to PCB	Yes
Ports	1
Temperature Range - Operating	-55° to +125°C
Termination Style	Through Hole
Waterproof / Dustproof	No
Waterproof / Dustproof Type	IP20

---

## Mates With / Use With

### Mates with Part(s)

Description	Part Number
Mates With	FCT Standard-Density D-Sub, Size 1, 9 Position, Plug