

# Actuator

704.230.4

Distribution by  
DigiKey

**DigiKey**



<https://digikey.eao.com/p/704.230.4>

Your product:

---



## 704.230.4 Actuator

### FRONT

Front bezel material:	Plastic
Front form:	square
Front dimension:	30 mm x 30 mm
Front bezel colour:	Grey

### MOUNTING

Design:	raised
---------	--------

### OPERATING-/INDICATION PART

Lens material:	Plastic
Lens optics:	transparent
Lens colour:	Yellow
Lens shape:	flush
Lens illumination:	illuminative

### ELECTRICAL CHARACTERISTICS

Standards:	The switches comply with the "Standards for low-voltage switching devices" DIN EN 60947-1
------------	---

### MECHANICAL CHARACTERISTIC

Mechanical lifetime:	≤3 Mio. cycles of operation
Operating Travel:	ca. 5.8 mm ± 0.2 mm
Terminal:	Screw terminal

**Operating force:** 8 N

**Weight:** 0.056 kg

**Switching action:** Momentary

## AMBIENT CONDITION

**Storage temperature:** - 40 °C ... + 85 °C

**Operating temperature:** - 40 °C ... + 55 °C

**IP Protection:** IP65 front side

## OTHER

**max. number of switching elements:** 3

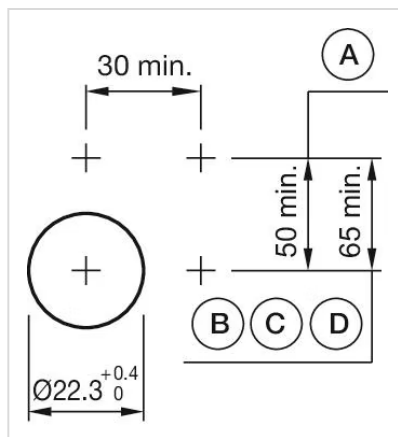
**Short Description:** Actuator, 30 mm x 30 mm, flush, illuminative, Yellow, Plastic, transparent, square, Grey, Plastic, Momentary, Screw terminal

**Housing material:** Plastic

**Housing colour:** Black

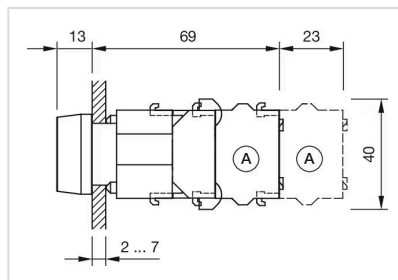
**Hints:** Frontring with protective cover to be mounted with a torque of 0.4 Nm onto actuator, Max. 3 switching elements can be clipped on

**Mounting cut-outs:**



A = Screw terminal  
 B = Push-in terminal (PIT)  
 C = Plug-in terminal 6.3 mm x 0.8 mm  
 D = Double plug-in terminal 6.3 mm x 0.8 mm

**Dimension drawings:**



A = Screw terminal

**Wiring diagrams:**

