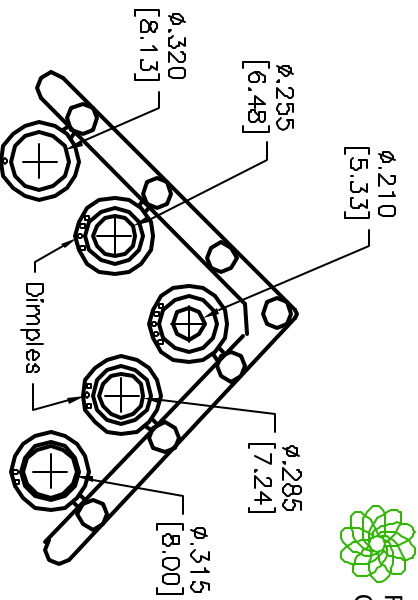
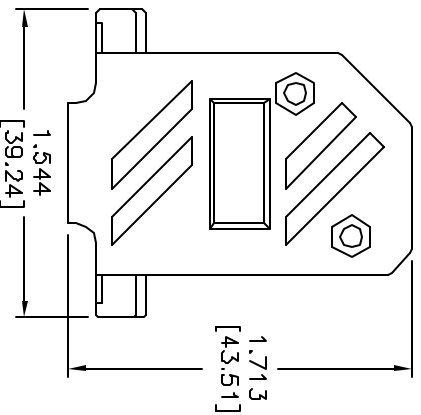
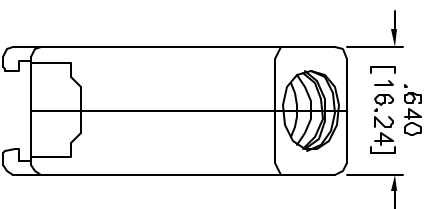
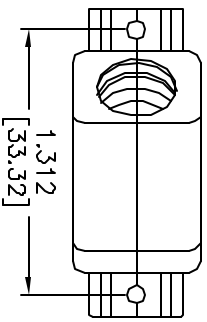


ALL RIGHTS RESERVED. NO PORTION OF THIS PUBLICATION, WHETHER IN WHOLE OR IN PART CAN BE REPRODUCED WITHOUT THE EXPRESS WRITTEN CONSENT OF SPC TECHNOLOGY.

SPC-F005.DWG

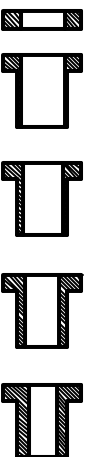
REVISIONS		DCI. NO. SPC-F005	Effective: 7/8/02		DCP No: 1398	
DCP #	REV	DESCRIPTION	DRAWN	DATE	CHECKD	DATE
1789	A	Released	DCM	4/5/07		

Connector Cover
- ABS Compound - UL94HB
- Nickel Plated



RoHS
Compliant

Compression Inserts
Material: Thermoplastic
Color: Black
Durometer: 75±5 Type A Per ASTM D2240



#4-40, #2 Blank Hex Nut,
C1010 Steel, Zinc Plated
(Hexavalent Chromium Free)
(2 pcs)

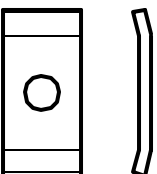


#4-40 x 7/6", fillister head
machine screw, C1018 Steel,
Zinc Plated
(Hexavalent Chromium Free)
(2 pcs)

#4-40 x 1/2", fillister head captive
screw, C1018 Steel, Zinc Plated
(Hexavalent Chromium Free)
(2 pcs)



#4 Saddle Washer, C.R. Steel,
Zinc Plated
(Hexavalent Chromium Free)
(2 pcs)



DISCLAIMER:
ALL STATEMENTS AND TECHNICAL INFORMATION CONTAINED
HEREIN ARE BASED UPON INFORMATION AND/OR TESTS WE
BELIEVE TO BE ACCURATE AND RELIABLE. SINCE
CONDITIONS OF USE ARE BEYOND OUR CONTROL, THE
USER SHALL DETERMINE THE SUITABILITY OF THE PRODUCT
FOR THE INTENDED USE AND ASSUME ALL RISK AND
LIABILITY WHATSOEVER IN CONNECTION THEREWITH.

TOLERANCES:
UNLESS OTHERWISE
SPECIFIED,
DIMENSIONS ARE
FOR REFERENCE
PURPOSES ONLY.

DRAWN BY:	DATE:
Don Mavaker	4/5/07
CHECKED BY:	DATE:
Jason Nash	2/11/08
APPROVED BY:	DATE:
Jason Nash	2/11/08

DRAWING TITLE:		DRAWING FILE	
D-Sub Cover, 15 Pin, Metallized Plastic 45° Exit,		ELECTRONIC FILE	
SIZE	DWG. NO.	SCALE:	REV
A	SPC14997	NTS	80K5407.dwg
U.O.M.: INCHES [mm]		SHEET: 1 OF 1	