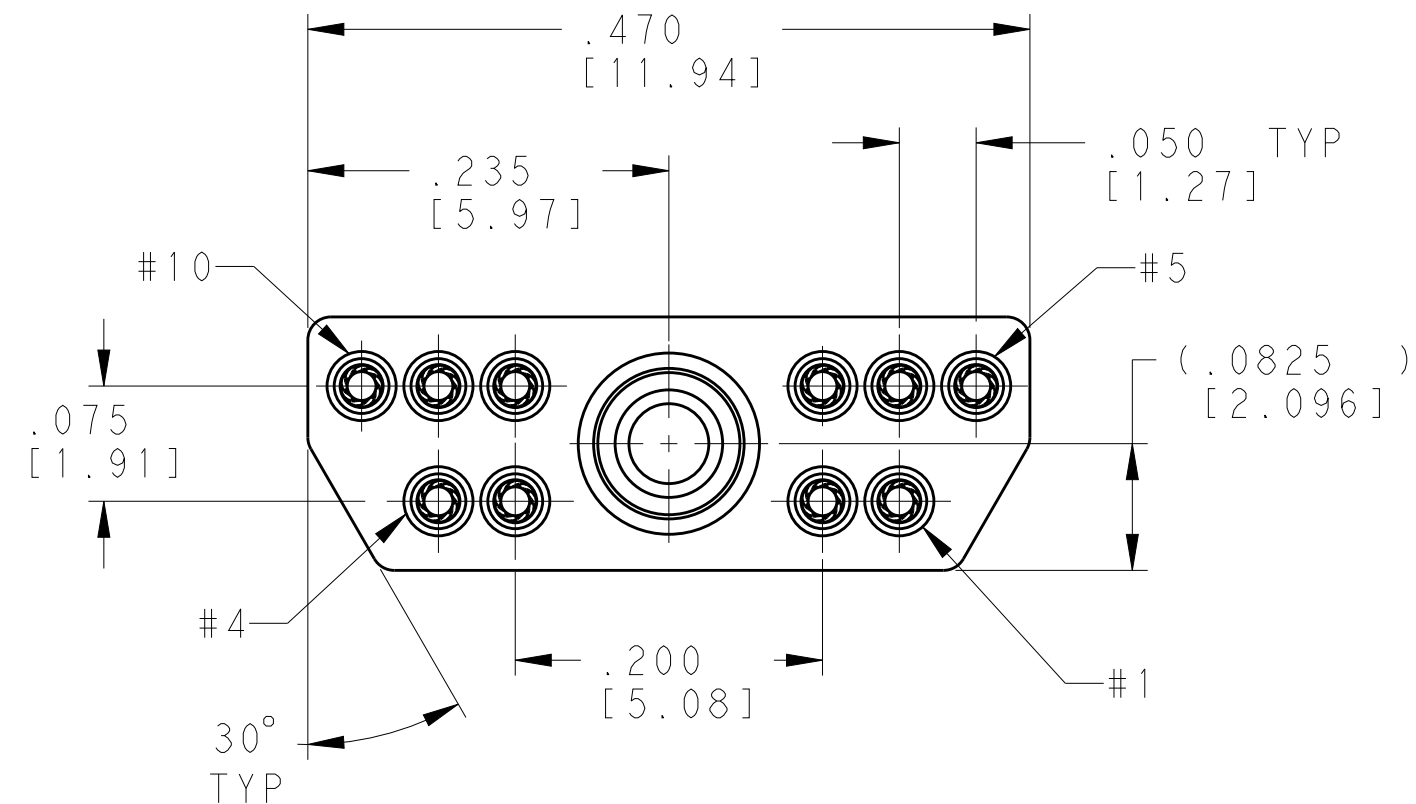
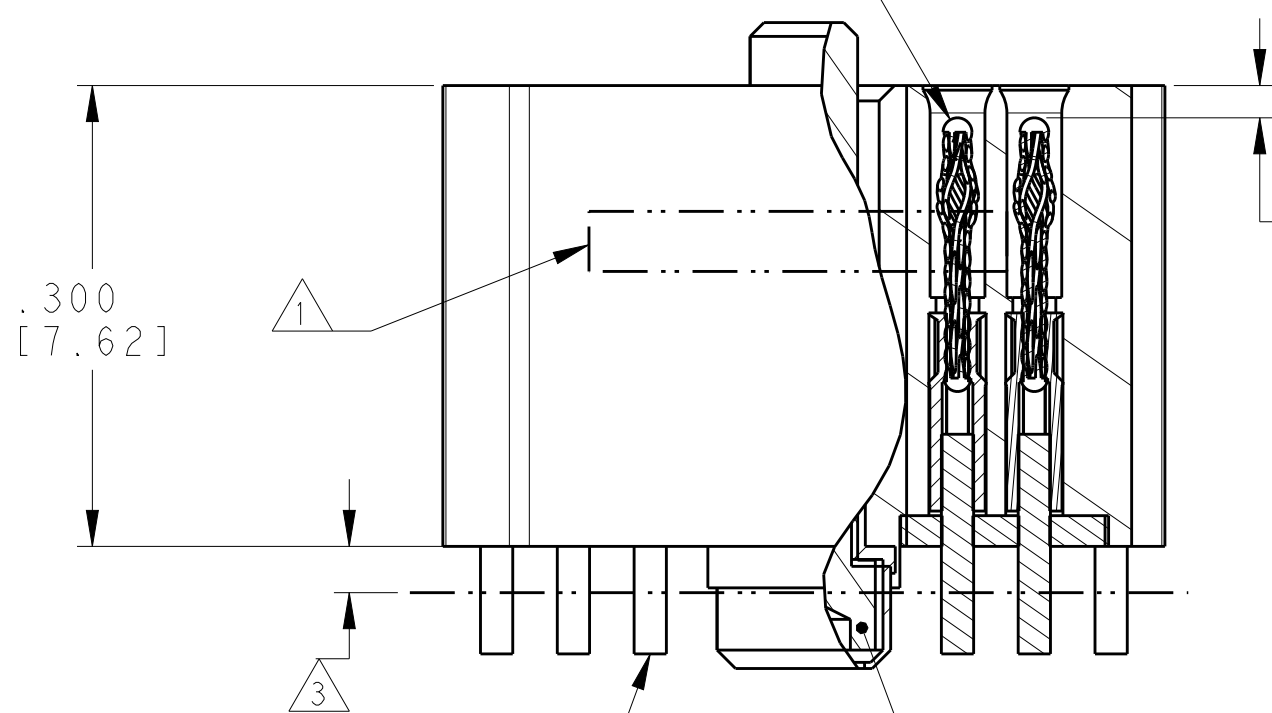


REVISIONS					
P	LTR	DESCRIPTION	DATE	DWN	APVD
	A	RELEASED PER ECO 20-009868	7-15-20	CT	EH



PIN CONTACT; QTY = 10
MAT'L: BeCu UNS C17200
FINISH: GOLD OVER NICKEL

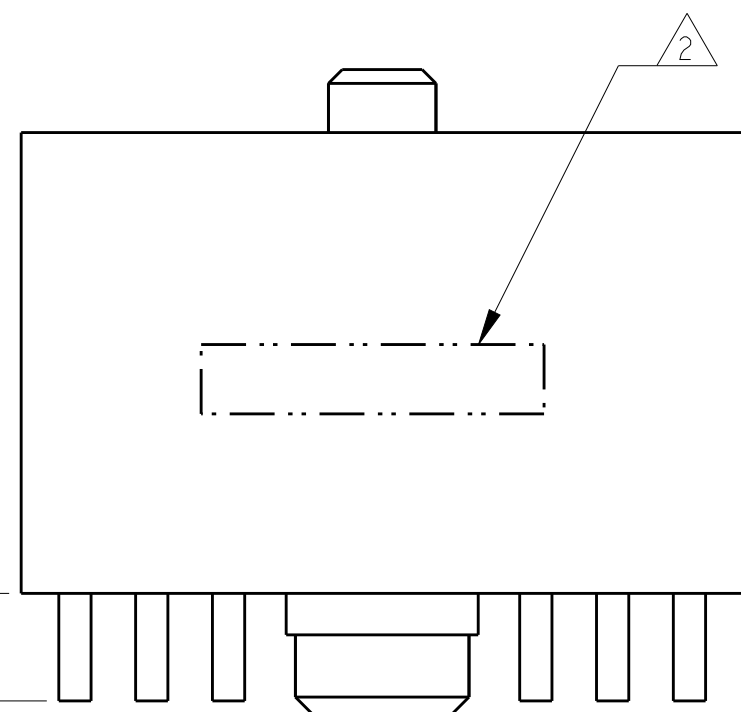
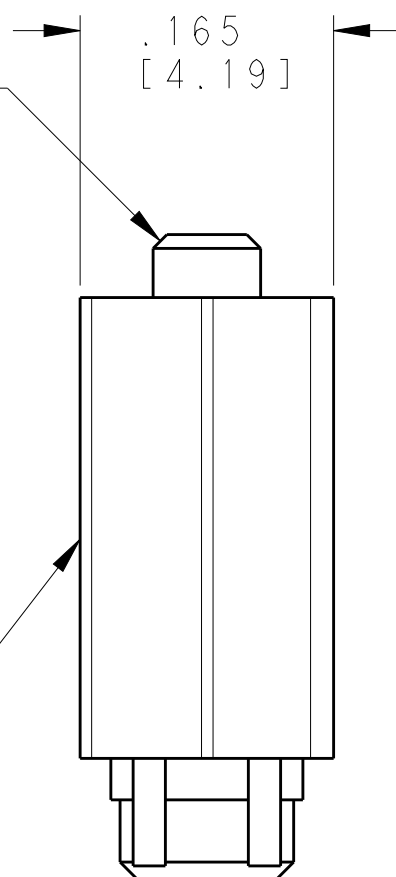
JACKSCREW LOCATED FLUSH TO .015
INBOARD/.045 OUTBOARD WITH SCREW IN
SEATED POSITION FOR ENGAGEMENT



26 AWG WIRE
MAT'L: COPPER TYPE S
FINISH: GOLD OVER NICKEL

0-80 UNF-2A JACKSCREW
MAT'L: STAINLESS STEEL
(.050 HEX WRENCH REQUIRED
TO TURN SCREW)


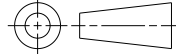
INSERT, 10 POSITION
MAT'L: NYLON 6/10 30% GLASS FILLED



- 1 TE PART NUMBER MARKED IN THIS LOCATION.
- 2 MICRODOT LOGO AND DATE CODE MARKED IN THIS LOCATION.
- 3 EPOXY MAY WICK .030 INCH MAX FOR UNINSULATED WIRE.

1-1532020-2

PART NO.

THIS DRAWING IS A CONTROLLED DOCUMENT.		DWN C. C. THOMAS 7-15-20	 TE Connectivity						
		CHK E. HALEY 7-15-20							
DIMENSIONS: INCHES [mm]		TOLERANCES UNLESS OTHERWISE SPECIFIED: APVD E. HALEY 7-15-20	NAME JACKMATE CONNECTOR, MICRODOT, MCJWX-10PX-.070						
		PRODUCT SPEC -			SIZE A2	CAGE CODE 98278	DRAWING NO G=1-1532020-2	RESTRICTED TO -	
		APPLICATION SPEC -							
		WEIGHT -							
		CUSTOMER DRAWING	SCALE 8:1	SHEET 1 of 1					REV A
		MATERIAL - - -	FINISH - - -						