

PRODUCT NUMBER  
10130689-101LF

EVEN COLUMN, CONTACT ROW ID  
ODD AND EVEN COLUMNS ARE OFFSET

ODD COLUMN, CONTACT ROW ID

SEE NOTE 6

HOUSING

4X 1  
SIG PAIR  
CENTERS

4X 3.6  
SIG CENTERS

4X 3.6  
GND CENTERS

1.3  
ROW A TO  
FIRST SIG

4X 1  
SIG PAIR  
CENTERS

4X 3.6  
GND CENTERS

4X 3.6  
SIG CENTERS

1.3  
ROW A TO  
FIRST GND

COLUMN ID

10130689-101LF

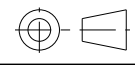
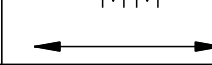

(22.50)

(10.05)

0.2  
ODD TO EVEN  
COLUMN OFFSET

72X 1.40±0.15  
SIGNALS

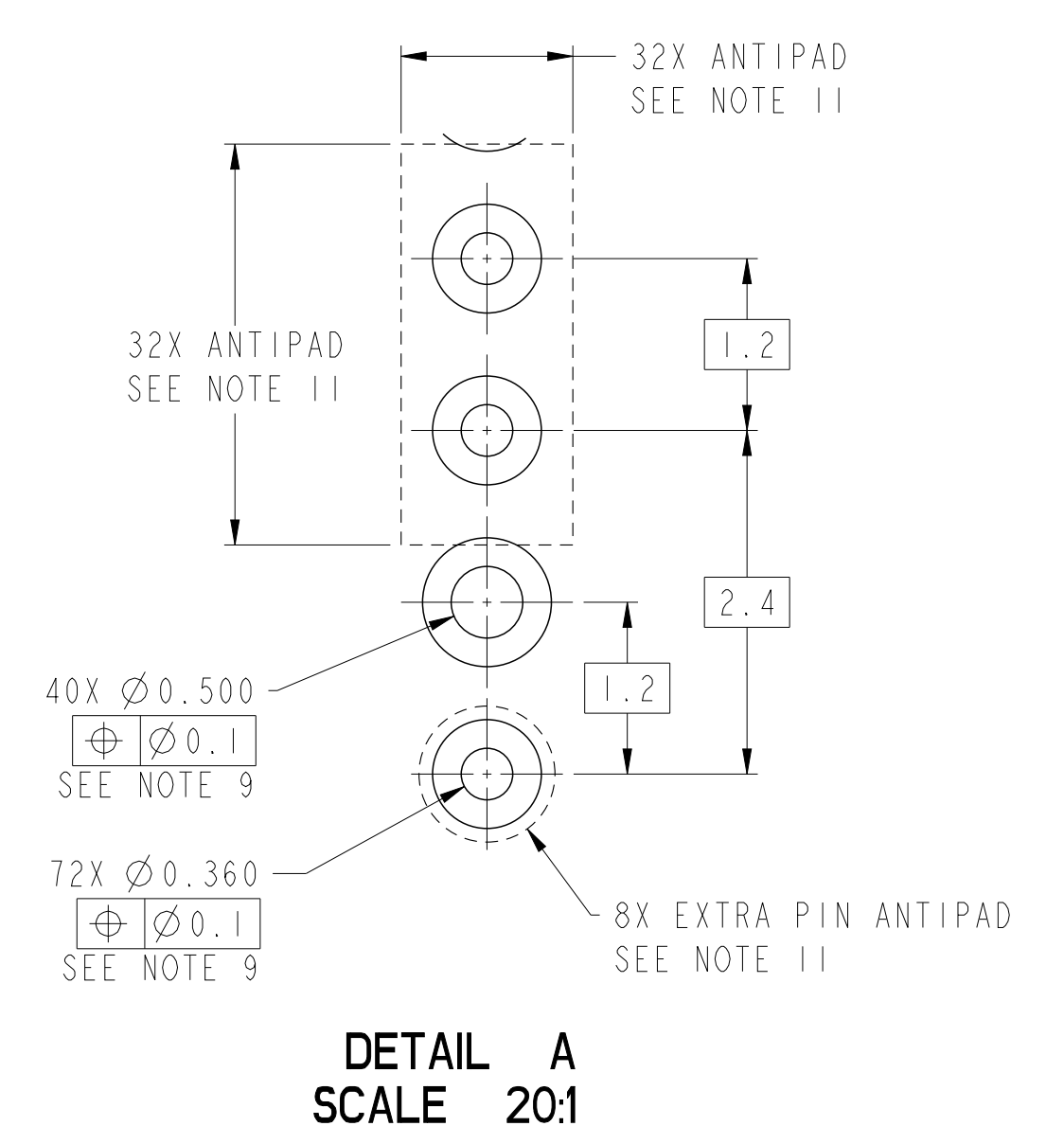
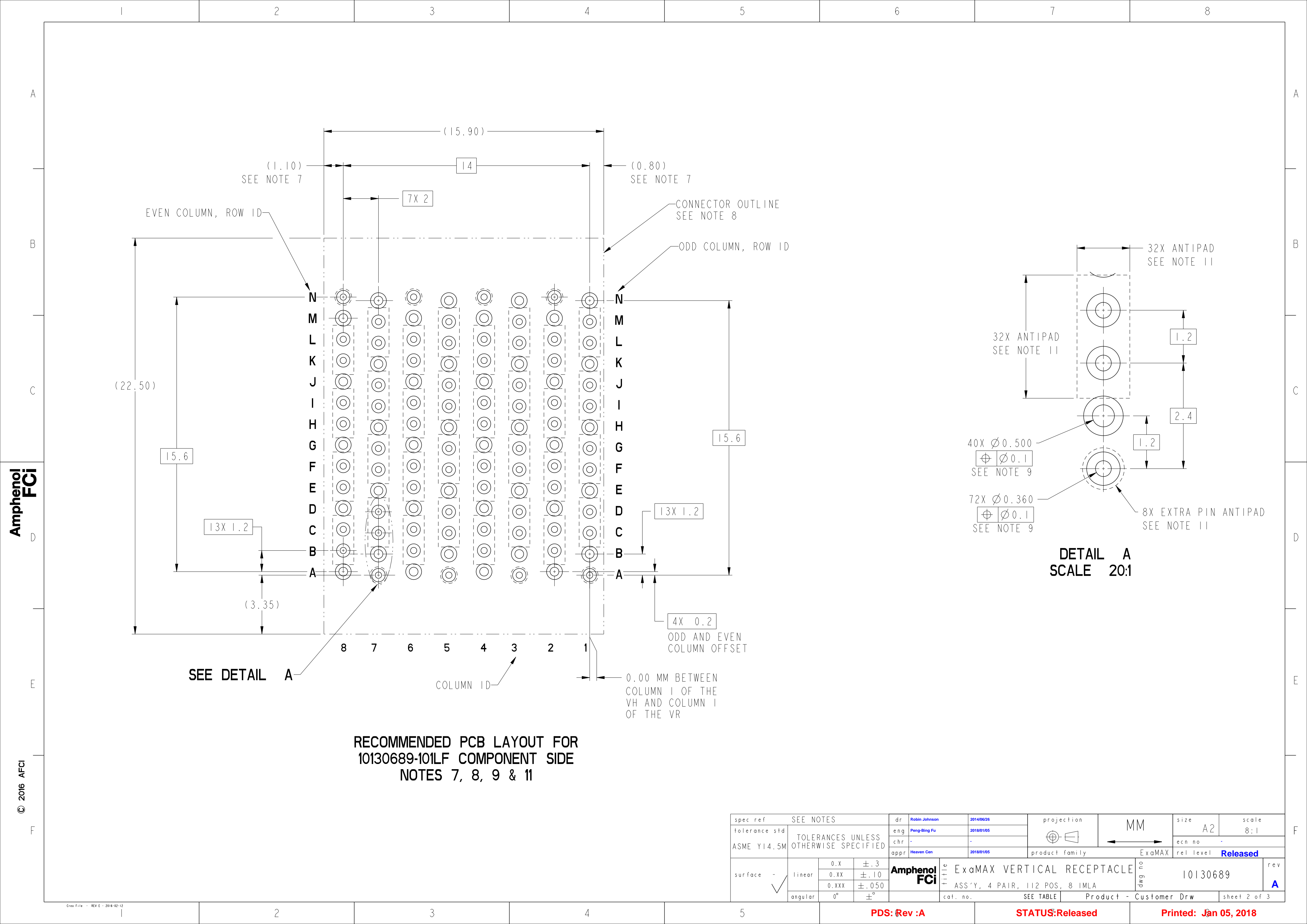
40X 1.60±0.15  
GROUNDS  
SEE NOTE 13

spec ref	SEE NOTES			dr	Robin Johnson	2014/06/26			size	A2	scale	8:1			
tolerance std	TOLERANCES UNLESS OTHERWISE SPECIFIED			eng	Peng-Bing Fu	2018/01/05			ecn no	-	rel level	Released			
ASME Y14.5M				chr	-	-			appr	Heaven Cen			2018/01/05	product family	ExaMAX
surface	-	linear	0.X ±.3 0.XX ±.10 0.XXX ±.050		title				ExaMAX VERTICAL RECEPTACLE				dwg no	10130689	rev
	✓	angular	0° ±°		cat. no.				SEE TABLE	Product - Customer Drw			sheet 1 of 3		

PDS: Rev :A

STATUS:Released

Printed: Jan 05, 2018



RECOMMENDED PCB LAYOUT FOR  
10130689-101LF COMPONENT SIDE  
NOTES 7, 8, 9 & 11

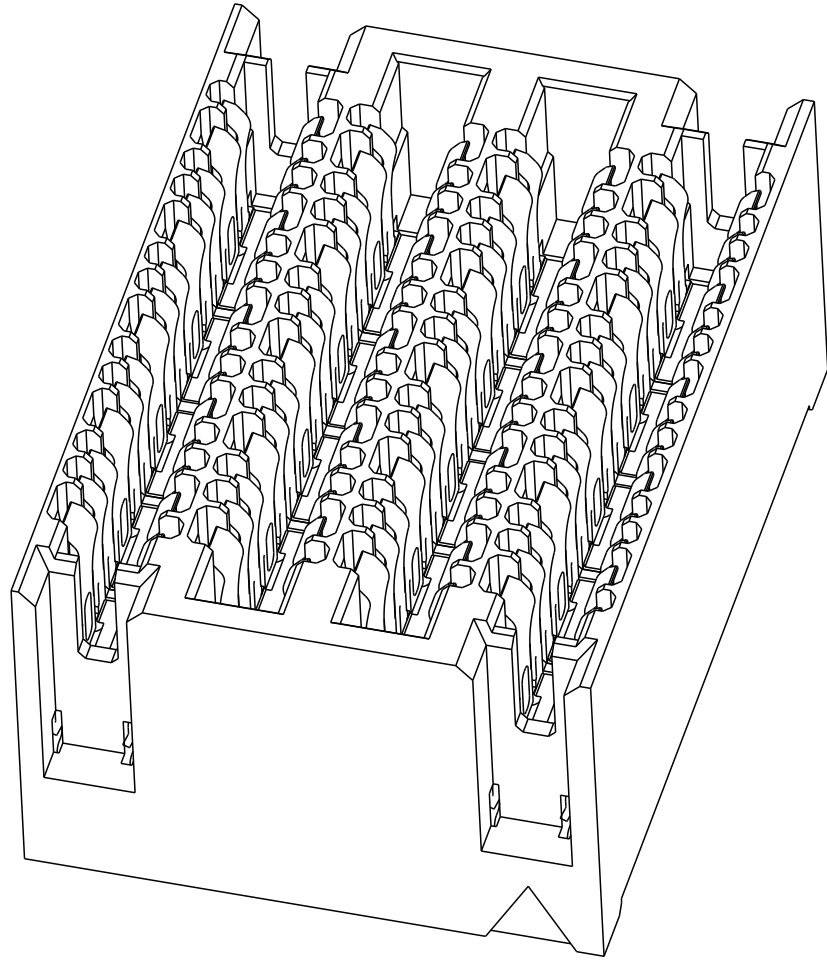
spec ref		SEE NOTES			dr	Robin Johnson	2014/06/26	projection		MM	size	A2	scale	8:1
tolerance std		TOLERANCES UNLESS OTHERWISE SPECIFIED			eng	Peng-Bing Fu	2018/01/05				ecn no	-		
ASME Y14.5M					chr	-	-							
					appr	Heaven Cen	2018/01/05	product family		ExaMAX	rel level		Released	
surface	- 	linear	0.X	±.3	Amphenol FCI	title				dwg no	10130689		rev	A
			0.XX	±.10										
			0.XXX	±.050		ASS'Y, 4 PAIR, 112 POS, 8 IMLA								
		angular	0°	±°	cat. no.		SEE TABLE		Product - Customer Drw				sheet 2 of 3	

Amphenol FCI




© 2016 APCI

NOTES:

- ①- CONNECTOR MATERIALS:  
HOUSING: HIGH TEMP THERMOPLASTIC, BLACK, UL94-V0  
IMLA PLASTIC: HIGH TEMP THERMOPLASTIC, BLACK, UL94-V0  
CONTACT: COPPER ALLOY
- 2 - CONTACT PLATING:  
SEPARABLE INTERFACE:  
PERFORMANCE-BASED PLATING, QUALIFIED TO MEET THE  
REQUIREMENTS OF FCI PRODUCT SPECIFICATION GS-12-1096  
INCLUDING TELCORDIA GR-1217-CORE (NOVEMBER 1995)  
CENTRAL OFFICE TEST SEQUENCE
- PRESS-FIT TAILS: TIN OVER NICKEL (LEAD FREE)
- 3 - PRODUCT SPECIFICATION: GS-12-1096
- 4 - APPLICATION SPECIFICATION: GS-20-0361
- 5 - PACKAGING MEETS GS-14-920 LEAD FREE LABELING  
SPECIFICATION
- ⑥- PRODUCT MARKING, (PART NUMBER & LOT CODE), ON THIS SURFACE.
- ⑦- THE MINIMUM VIA SPACING BETWEEN STACKED CONNECTORS IS 2.0 MM FOR THIS VR  
AND THE MATING HEADER. REFER TO THE APPLICATION SPECIFICATION FOR DETAILS
- ⑧- CONNECTOR OUTLINE MAY BE SCREEN PRINTED ONTO CUSTOMER PCB TO  
BE USED AS A GUIDE FOR MANUAL CONNECTOR PLACEMENT.
- ⑨- REFER TO CUSTOMER DRAWING 10119933 FOR INFORMATION  
ON PCB HOLE DIAMETERS AND PLATING OPTIONS
- 10- THIS PRODUCT MEETS EUROPEAN UNION DIRECTIVES AND OTHER  
COUNTRIE'S REGULATIONS AS DESCRIBED IN GS-47-0004
- ⑪- REFER TO ROUTING GUIDE GS-20-0511 FOR RECOMMENDATIONS  
ON OPTIMIZATION OF FOOTPRINT AND TRACE ROUTING LAYOUT.
- 12- THE HOUSING WILL WITHSTAND EXPOSURE TO 260°C PEAK  
TEMPERATURE FOR 10-30 SECONDS IN A CONVECTION, INFRA-RED  
OR VAPOR PHASE REFLOW OVEN.
- ⑬- ALL GROUND CONTACTS ARE COMMONED WITHIN A COLUMN.



10130689-101LF

spec ref		SEE NOTES			dr		Robin Johnson		2014/06/26		projection		<div>MM</div>		size		A2		scale		5:1								
tolerance std		TOLERANCES UNLESS OTHERWISE SPECIFIED			eng		Peng-Bing Fu		2018/01/05		<div></div>		<div></div>		ecn no		-		rel level		Released								
ASME Y14.5M					chr		-		-																				
					appr		Heaven Cen		2018/01/05						product family								ExaMAX						
surface - <div></div>		linear		0.X		±.3		Amphenol FCi		title		ExaMAX VERTICAL RECEPTACLE ASS'Y, 4 PAIR, 112 POS, 8 IMLA										dwg no		10130689		rev		A	
				0.XX		±.10																							
				0.XXX		±.050																							
				angular		0°																							
										cat. no.		SEE TABLE		Product - Customer Drw										sheet 3 of 3					