

G17 DSub Connector Right Angle PCB Mount

Through-hole DSub connectors male and female.

Materials

Housing	– 94V-0 thermoplastic
Contacts	– P/B with 50µ" Ni
Shell	– Carbon steel
Board-locks	– P/B
Screw-locks	– Brass

Durability

Gold Flash	– 75 cycles
15µ" Gold	– 125 cycles
30µ" Gold	– 250 cycles
Full gold flash	– 75 cycles

Related Information

Panel cutout	– Page D-2
PC board layout	– Page D-3
DSub Accessories	– Page D-6

Electrical

Current	– 5A
Voltage	– 250VAC/rms 60Hz

Part Number System:

G17X XX XXXXX X

DSub R/A PCB CONNECTOR

Through Hole 2.54mm pitch

FOOTPRINT

C:	8.08mm
D:	5mm
E:	10.4mm

NUMBER OF POSITIONS

09:	9 Position
15:	15 Position
25:	25 Position
37:	37 Position
50:	50 Position (G17C only)

CONTACT STYLE

0:	Receptacle
1:	Plug

CONTACT FINISH

0:	Gold Flash
1:	15µ" Gold
2:	30µ" Gold
3:	Full gold flash

VARIATION CODE

Blank: Standard

FLANGE MOUNTING OPTION

- 0: Ø3.05mm clear hole
- 1: #4-40 threaded hole
- 2: #4-40 threaded screw-lock installed
- 3: #4-40 threaded hole with #4-40 threaded screw-lock bulk-packed
- 4: M3 threaded hole
- 5: M3 screw-lock installed
- 6: #4-40 threaded hole with M2.6 screw-lock bulk-packed
- 7: #4-40 threaded screw-lock clinch-mounted installed

BOARD MOUNT OPTION (NOT G17J)

- 0: None
- 1: Ø3.05mm clear hole
- 2: #4-40 threaded hole
- 3: Arrowhead board-lock
- 4: 4 Claw board-lock (G17C only)

FRONT SHELL FINISH

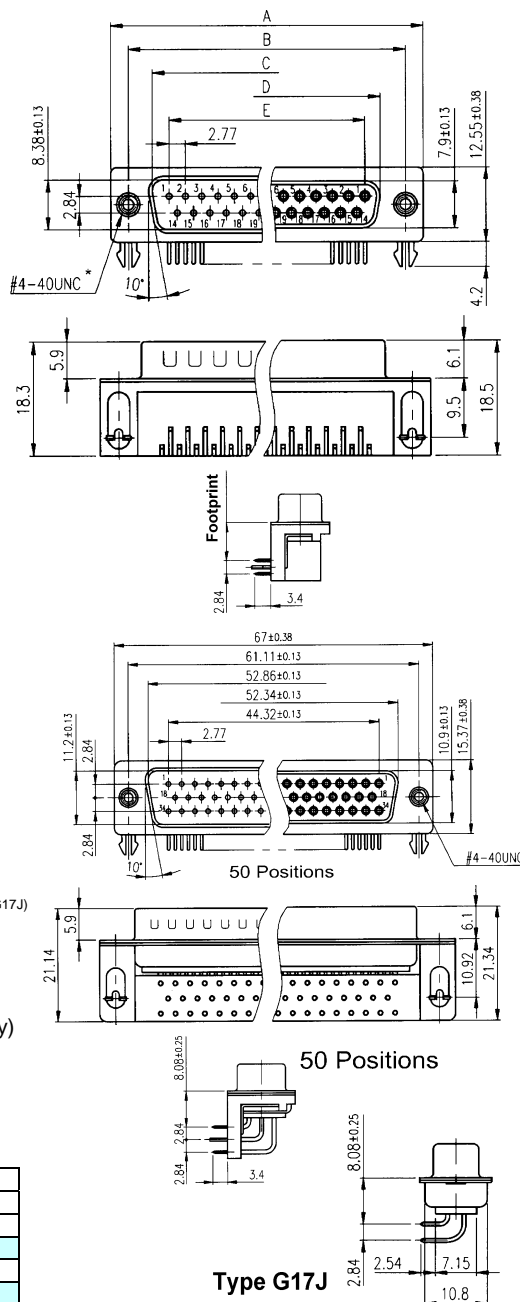
- 0: Zinc chromate
- 1: Tin/Lead over Nickel
- 2: Nickel

PNS-17C Rev.B/DSUB-G17C0900032X-25 Rev. A

PNS-17D Rev.B/DSUB-G17D09000131-25 Rev. A

PNS-17E Rev.C/DSUB-G17E0910132-25 Rev. B

No. of Positions	Dimensions				
	A	B	C	D	E
9	30.84	24.99	16.92	16.24	11.09
15	39.24	33.32	24.70	24.56	19.39
25	53.04	47.04	38.96	38.38	33.24
37	69.32	63.50	55.42	54.76	49.86



G17U DSub Connector Right Angle PCB Mount with Ferrite

Low cost solution for EMI and EMP

Characteristics

Same as G17C

Related Information

Same as G17C

Part Number System:

G17U XX XXXXX X

DSub PCB CONNECTOR

R/A Through Hole with ferrite

NUMBER OF POSITIONS

09:	9 Position
15:	15 Position
25:	25 Position
37:	37 Position

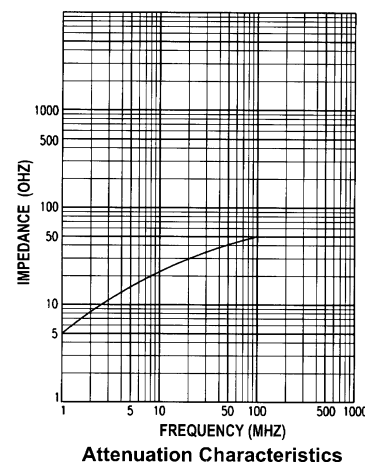
SAME AS G17C

VARIATION CODE

Blank: Standard

DSub	Impedance Ω		Range
	25MHz	100MHz	
9	31	50	100MHz to 300MHz
15			
25			
37			

PNS-17U Rev.A/DSUB-G17UX0X31-25 Rev. A



Amphenol AMEA

Specifications are subject to change without notice

All dimensions in mm. P/B – Phosphor Bronze. Ni – Nickel. µ" – Micro inches.

<http://www.amphenol.co.za> e-mail: amphenol_africa@csi.com

For further variations and information, consult representative

D-1

AMTA

G17K DSub Connector IDC Termination

Ribbon cable mount DSubs.

Materials

Housing	– 94V-0 thermoplastic
Pin contacts	– Brass with 50µ" Ni
Socket contact	– P/B with 50µ" Ni
Shell	– Carbon steel
Clinch nut	– Brass
Screw-locks	– Brass

Electrical

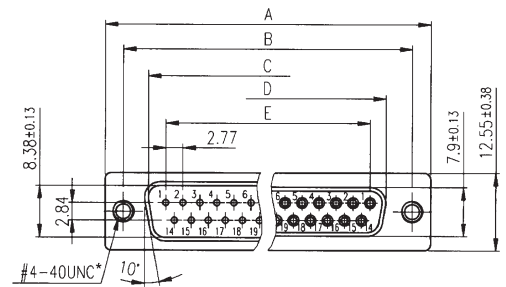
Current	– 5A
Voltage	– 250VAC/rms 60Hz

Durability

Gold Flash	– 75 cycles
15µ" Gold	– 125 cycles
30µ" Gold	– 250 cycles
Full gold flash	– 75 cycles

Related Information

Panel cutout	– See below
Ribbon cable	– 26~28AWG G180 G180 or 3C Page V-1
Accessories	– Page D-6



* Please refer to "Flange Mounting Option" of ordering information

Part Number System:

G17K XX XXXXX XX

DSub PCB CONNECTOR
IDC Termination

NUMBER OF POSITIONS

- 09: 9 Position
- 15: 15 Position
- 25: 25 Position
- 37: 37 Position
- 50: 50 Position

CONTACT STYLE

- 0: Receptacle
- 1: Plug

CONTACT FINISH

- 0: Gold Flash
- 1: 15µ" Gold
- 2: 30µ" Gold
- 3: Full gold flash

FRONT SHELL FINISH

- 0: Zinc chromate
- 1: Tin/Lead over Nickel
- 2: Nickel
- 3: Whole plastic type

VARIATION CODE

Blank: Standard

STRAIN RELIEF OPTION

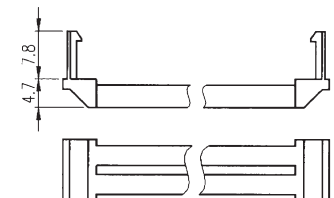
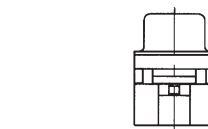
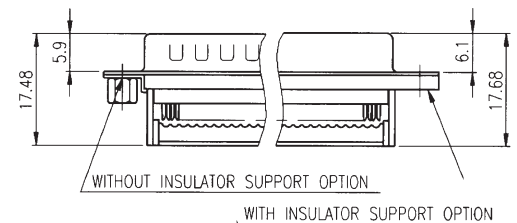
- 0: None
- 1: With strain relief

FLANGE MOUNTING OPTION

- 0: Ø3.05mm clear hole
- 1: #4-40 threaded hole
- 2: #4-40 threaded screw-lock installed
- 3: #4-40 threaded hole with #4-40 threaded screw-lock bulk-packed
- 4: M3 threaded hole
- 5: M3 screw-lock installed
- 6: #4-40 threaded hole with M2.6 screw-lock bulk-packed
- 7: #4-40 threaded screw-lock clinch-mounted installed

BRACKET OPTION

- 0: Without insulator support
- 1: With insulator support



Strain Relief

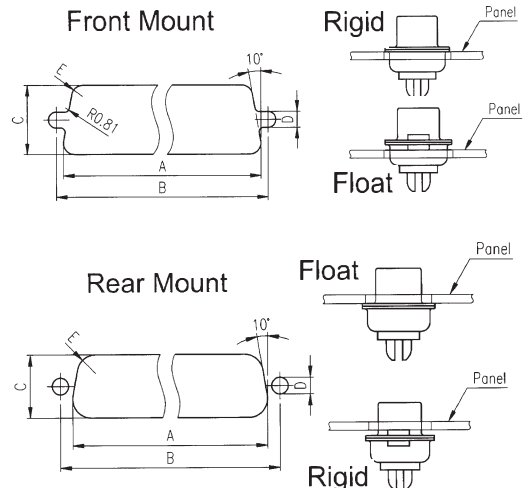
PNS-G17K Rev.C

DSUB-G17K09001001X-25 Rev.B

No. of Positions	Dimensions				
	A	B	C	D	E
9	30.84	24.99	16.92	16.24	11.09
15	39.24	33.32	24.70	24.56	19.39
25	53.04	47.04	38.96	38.38	33.24
37	69.32	63.50	55.42	54.76	49.86

Recommended panel cut-outs for DSub Connectors

No. of Contacts		Mounting type		Dimensions				
Standard	High Density			A±0.2	B±0.2	C±0.2	D±0.1	E±0.1
9	15	Rigid	Front	22.2	25.0	13.0	3.0	2.1
			Rear	20.5	25.0	11.4	3.0	3.4
		Float	Front	23.0	25.0	13.8	2.2	2.1
			Rear	21.3	25.0	12.2	2.2	3.4
15	26	Rigid	Front	30.5	33.3	13.0	3.0	2.1
			Rear	28.8	33.3	11.4	3.0	3.4
		Float	Front	31.3	33.3	13.8	2.2	2.1
			Rear	29.6	33.3	12.2	2.2	3.4
25	44	Rigid	Front	44.3	47.0	13.0	3.0	2.1
			Rear	42.5	47.0	11.4	3.0	3.4
		Float	Front	45.1	47.0	13.8	2.2	2.1
			Rear	43.3	47.0	12.2	2.2	3.4
37	62	Rigid	Front	60.7	63.5	13.0	3.0	2.1
			Rear	59.1	63.5	11.4	3.0	3.4
		Float	Front	61.5	63.5	13.8	2.2	2.1
			Rear	59.8	63.5	12.2	2.2	3.4
50	78	Rigid	Front	58.3	61.1	15.8	3.0	2.1
			Rear	56.3	61.1	14.9	3.0	3.4
		Float	Front	59.2	61.1	16.6	2.2	2.1
			Rear	57.1	61.1	14.9	2.2	3.4



For further variations and information, consult representative

Amphenol AMEA

Specifications are subject to change without notice

All dimensions in mm. P/B – Phosphor Bronze. Ni – Nickel. µ" – Micro inches.

<http://www.amphenol.co.za> e-mail: amphenol_africa@csi.com

D-2

AMTA

G17M DSub Connector Straddle Mount PCB

Straddle mounted DSub connectors male and female.

Materials

Housing	– 94V-0 thermoplastic
Contacts	– P/B with 50µ" Ni
Shell	– Carbon steel
Clinch nut	– Brass
Board-locks	– P/B
Screw-locks	– Brass

Electrical

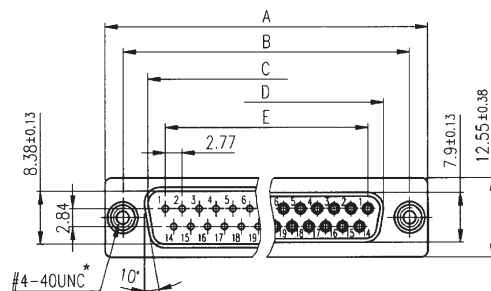
Current	– 5A
Voltage	– 250VAC/rms 60Hz

Durability

Gold Flash	– 75 cycles
15µ" Gold	– 125 cycles
30µ" Gold	– 250 cycles
Full gold flash	– 75 cycles

Related Information

Panel cutout	– Page D-2
Accessories	– Page D-6



Part Number System:

G17M XX XXXXX X

DSub PCB CONNECTOR

Straddle Mount

NUMBER OF POSITIONS

- 09: 9 Position
- 15: 15 Position
- 25: 25 Position
- 37: 37 Position

CONTACT STYLE

- 0: Receptacle
- 1: Plug

CONTACT FINISH

- 0: Gold Flash
- 1: 15µ" Gold
- 2: 30µ" Gold
- 3: Full gold flash

FRONT SHELL FINISH

- 0: Zinc chromate
- 1: Tin/Lead over Nickel
- 2: Nickel

VARIATION CODE

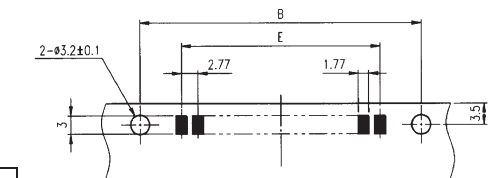
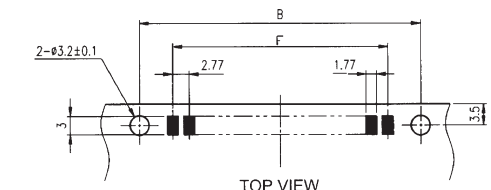
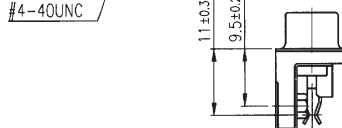
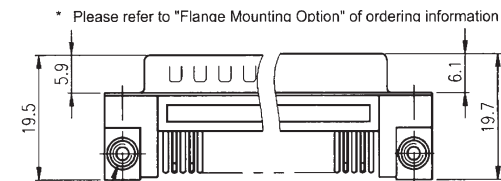
- Blank: Standard
- 0: Short footprint type

FLANGE MOUNTING OPTION

- 0: Ø3.05mm clear hole
- 1: #4-40 threaded hole
- 2: #4-40 threaded screw-lock installed
- 3: #4-40 threaded hole with #4-40 threaded screw-lock bulk-packed
- 4: M3 threaded hole
- 5: M3 screw-lock installed
- 6: #4-40 threaded hole with M2.6 screw-lock bulk-packed
- 7: #4-40 threaded screw-lock clinch-mounted installed

BOARD MOUNT OPTION

- 0: None
- 1: Ø3.05mm clear hole
- 2: #4-40 threaded hole
- 3: M3 threaded hole
- 4: M3 screw-lock installed

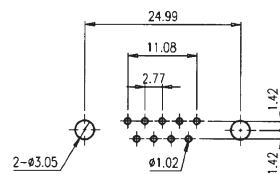


Recommended PCB Layout

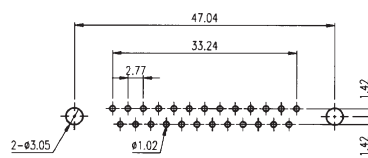
No. of Positions	Dimensions					
	A	B	C	D	E	F
9	30.84	24.99	16.92	16.24	11.09	8.31
15	39.24	33.32	24.70	24.56	19.39	16.62
25	53.04	47.04	38.96	38.38	33.24	30.47
37	69.32	63.50	55.42	54.76	49.86	47.09

PNS17M Rev.C

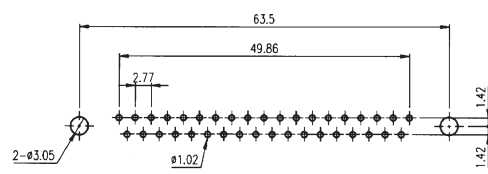
Recommended PCB layout for vertical and right angle DSub Connectors



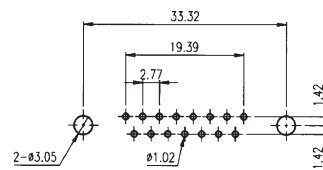
9 positions



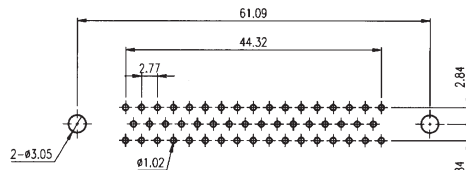
25 positions



37 positions



15 positions



50 positions

For further variations and information, consult representative

Amphenol AMEA

Specifications are subject to change without notice

All dimensions in mm. P/B – Phosphor Bronze. Ni – Nickel. µ" – Micro inches.

<http://www.amphenol.co.za> e-mail: amphenol_africa@csi.com

D-3

AMTA

G17R DSub Connector Rear Release Crimp Type

Crimp type connector for cable application.

Materials

Housing	– 94V-0 thermoplastic
Shell	– Carbon steel
Clinch nut	– Brass
Screw-locks	– Brass

Related Information

Panel cutout	– Page D-2
Accessories	– Page D-5/6/13
Contacts	– See below

Part Number System:

G17R XX XX X X

DSub PCB CONNECTOR
Crimp type Cable Mount

NUMBER OF POSITIONS

09: 9 Position
15: 15 Position
25: 25 Position
37: 37 Position
50: 50 Position

CONTACT STYLE

0: Receptacle
1: Plug

FRONT SHELL FINISH

0: Zinc chromate
1: Tin/Lead over Nickel
2: Nickel

VARIATION CODE

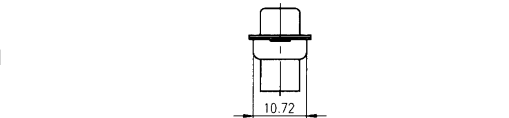
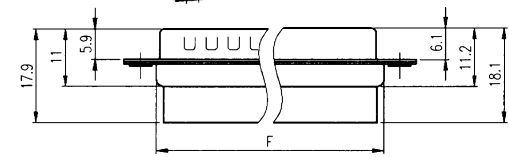
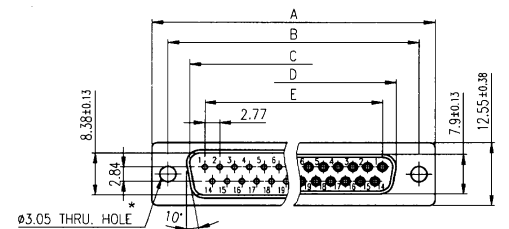
Blank: Standard

FLANGE MOUNTING OPTION

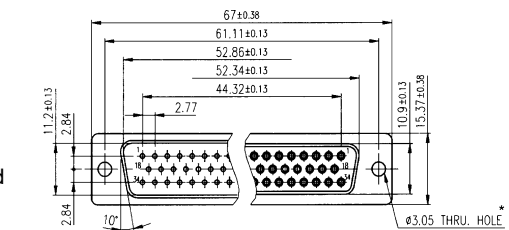
0: Ø3.05mm clear hole
1: #4-40 threaded hole
2: #4-40 threaded screw-lock installed
3: #4-40 threaded hole with #4-40 threaded screw-lock bulk-packed
4: M3 threaded hole
5: M3 screw-lock installed
6: #4-40 threaded hole with M2.6 screw-lock bulk-packed
7: #4-40 threaded screw-lock clinch-mounted installed

DSUB-G17R09010-25 Rev.A

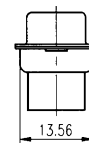
No. of Positions	Dimensions					
	A	B	C	D	E	F
9	30.84	24.99	16.92	16.24	11.09	19.28
15	39.24	33.32	24.70	24.56	19.39	27.51
25	53.04	47.04	38.96	38.38	33.24	41.30
37	69.32	63.50	55.42	54.76	49.86	57.71



50 Positions



* Please refer to "Flange Mounting Option" of ordering information



G17RC DSub Crimp Contacts

For rear insert G17R

Materials

Wire Gauge	– 28~22 AWG
Pin Contact	– Brass with 50µ" Ni
Socket Contact	– P/B with 50µ" Ni

Electrical

Current	– 5A
Voltage	– 250VAC/rms 60Hz

Durability

Gold Flash	– 75 cycles
15µ" Gold	– 125 cycles
30µ" Gold	– 250 cycles
Full gold flash	– 75 cycles

Related Information

Tooling	– Consult representative
---------	--------------------------

Part Number System:

G17RC X X X X X X

DSub CRIMP CONTACT
Pin and Socket

CONTACT STYLE

0: Female
1: Male

CONTACT FINISH

0: Gold Flash
1: 15µ" Gold
2: 30µ" Gold
3: Full gold flash

PACKING STYLE

0: Right-hand feed
1: Left-hand feed

VARIATION CODE

Blank: Standard

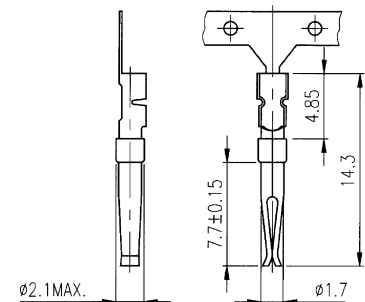
WIRE SIZE

1: AWG #18~#24
2: AWG #24~#28
3: AWG #28~#32

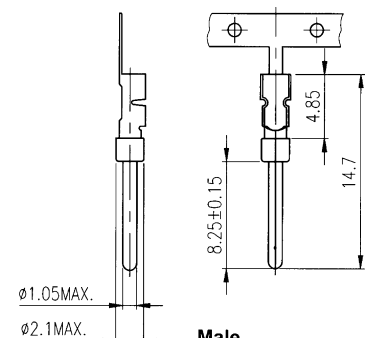
PACKING OPTION

3: Reel of 5,000
4: Reel of 10,000

PNS-17RC Rev.B



Female



Male

For further variations and information, consult representative