

QPD W 4PE2,5 6-11 M20 0,5 GY - Panel feed-through



1403726

<https://www.phoenixcontact.com/us/products/1403726>

Please be informed that the data shown in this PDF document is generated from our online catalog. Please find the complete data in the user documentation. Our general terms of use for downloads are valid.



Panel feed-through, product family: QPD, connection method: Single wires (Welded-on)/ IDC connection, number of positions: 4+PE, M20, Pin, 1 mm² ... 2.5 mm², 690 V, 20 A, PA, gray, with QUICKON nut, coding: coded, external cable diameter: 6 mm ... 10 mm and 6 mm ... 11 mm, 2.5 mm², wires cut flat at the end, cable length: 0.5 m

Commercial data

| | |
|--------------------------------------|---------------------|
| Item number | 1403726 |
| Packing unit | 1 pc |
| Minimum order quantity | 1 pc |
| Product key | BF6ACB |
| Catalog page | Page 169 (NTK-2012) |
| GTIN | 4046356665001 |
| Weight per piece (including packing) | 144 g |
| Weight per piece (excluding packing) | 22 g |
| Country of origin | PL |

QPD W 4PE2,5 6-11 M20 0,5 GY - Panel feed-through



1403726

<https://www.phoenixcontact.com/us/products/1403726>

Technical data

Product properties

| | |
|------------------------------------|--------------------|
| Product type | Panel feed-through |
| Product family | QPD |
| Type | QPD 5x2,5 |
| Number of positions | 5 |
| Connection profile | 4+PE |
| Position marking | 1, 2, L, N, PE |
| Number of connections | 10 |
| Number of connections per position | 1 |
| Coding | coded |

Insulation characteristics

| | |
|----------------------|-----|
| Overvoltage category | III |
| Degree of pollution | 3 |

Connection data

Connection technology

| | |
|---|--------------------------|
| Connection method On the device side | Single wires (Welded-on) |
| Connection method On the field side | IDC connection |
| Frequency of connections between conductors of the same cross section | max. 10 |

Conductor connection

| | |
|----------------------------------|---|
| Conductor cross section flexibel | 1 mm ² ... 2.5 mm ² |
| Conductor cross section solid | 1 mm ² ... 2.5 mm ² |
| Connection cross section AWG | 16 ... 14 |
| Tightening torque Union nut | 10 Nm |
| Tightening torque Locking nut | 5 Nm |
| Wrench size Union nut | 27 mm |
| Wrench size Locking nut | 30 mm |

Pin assignment

| | |
|---|-----------|
| Contact Color (signal designation) Contact (optional) | 1 BK |
| | 2 BN |
| | 3 GY |
| | N BU |
| | PE GNYE |

Dimensions

QPD W 4PE2,5 6-11 M20 0,5 GY - Panel feed-through



1403726

<https://www.phoenixcontact.com/us/products/1403726>

| | |
|--------------------------|---------|
| Dimensional drawing | |
| Width | 34.6 mm |
| Height | 34.6 mm |
| Length | 71.8 mm |
| Diameter | 34.6 mm |
| Wrench size | 27 mm |
| Wrench size for mounting | 27 mm |

Electrical properties

| | |
|--------------------------------|----------|
| Rated surge voltage (II/2) | 8 kV |
| Rated surge voltage (III/2) | 8 kV |
| Rated surge voltage (III/3) | 6 kV |
| Rated current | 20 A |
| Contact resistance | < 3 mΩ |
| rated voltage (II/2) | 1000 V |
| rated voltage (III/2) | 1000 V |
| Rated voltage (III/3) | 690 V |
| Nominal voltage U _N | 690 V AC |
| | 690 V DC |
| Nominal current I _N | 20 A |

Material specifications

| | |
|--|---------------|
| Material Housing | PA |
| Material Contact | Cu |
| Material Contact surface | Silver-plated |
| Flammability rating according to UL 94 | V0 |
| Material wire insulation | PVC / PE |

Cable/line

| | |
|---|--|
| Cable length | 0.5 m |
| Structure of individual litz in acc. with VDE 0295 / smallest wire diameter | VDE 0295 class 1 to 6/min. 0.15 mm |
| External cable diameter | 6 mm ... 10 mm |
| | 6 mm ... 11 mm |
| Wire diameter including insulation | 2 mm ... 3.8 mm |
| Position marking | 1, 2, L, N, PE |
| Single wire, color | black, brown, gray, blue, green/yellow |
| Cable cross section | 2.5 mm² |
| Material wire insulation | PVC/PE/TPE/rubber |

Mounting

QPD W 4PE2,5 6-11 M20 0,5 GY - Panel feed-through



1403726

<https://www.phoenixcontact.com/us/products/1403726>

| | |
|---------------|--------------------|
| Mounting type | Front mounting M20 |
|---------------|--------------------|

Environmental and real-life conditions

| | |
|---|-------------------|
| Ambient conditions | |
| Degree of protection | IP66 |
| | IP68 (2 m / 24 h) |
| | IP69K |
| Ambient temperature (operation) | -40 °C ... 100 °C |
| Temperature when conductor connected | -5 °C ... 50 °C |
| Ambient temperature (storage/transport) | -40 °C ... 80 °C |

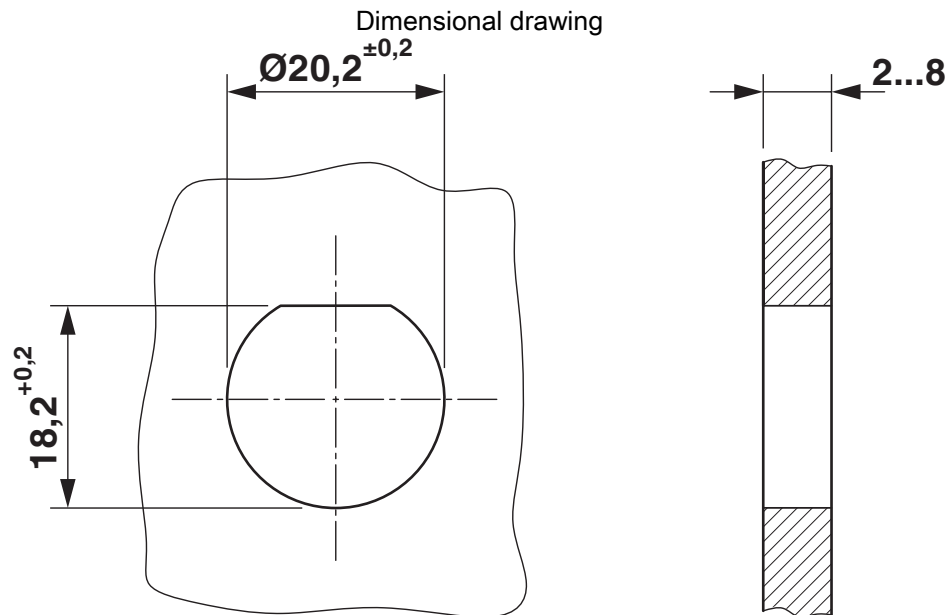
QPD W 4PE2,5 6-11 M20 0,5 GY - Panel feed-through



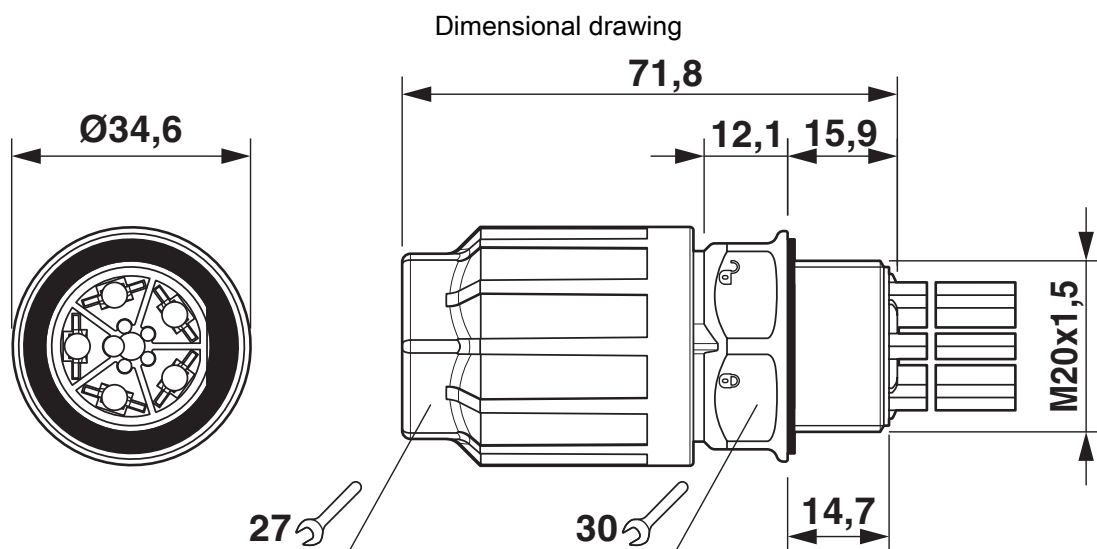
1403726

<https://www.phoenixcontact.com/us/products/1403726>

Drawings



Housing cutout



Dimensional drawing of the QPD W 5x2,5 M20

Classifications

ECLASS

| | |
|-------------|----------|
| ECLASS-11.0 | 27440602 |
| ECLASS-13.0 | 27440602 |

UNSPSC

| | |
|-------------|----------|
| UNSPSC 21.0 | 39121522 |
|-------------|----------|

Environmental product compliance

China RoHS

| | |
|--|---|
| Environment friendly use period (EFUP) | EFUP-50 |
| | An article-related China RoHS declaration table can be found in the download area for the respective article under "Manufacturer declaration". For all articles with EFUP-E, no China RoHS declaration table issued and required. |

EU REACH SVHC

| | |
|-------------------------------------|----------------------------|
| REACH candidate substance (CAS No.) | No substance above 0.1 wt% |
|-------------------------------------|----------------------------|

QPD W 4PE2,5 6-11 M20 0,5 GY - Panel feed-through



1403726

<https://www.phoenixcontact.com/us/products/1403726>

Accessories

CP-QPD 5X2,5 - Coding profile

1404530

<https://www.phoenixcontact.com/us/products/1404530>



Coding profile, red, for insertion into the 5-pos. QUICKON dome and connector, can be positioned in 72° increments.

QPD QSK GY 5X2,5 FS - Protective cap

1404526

<https://www.phoenixcontact.com/us/products/1404526>

Protective cap, plastic, for QUICKON connection, gray, with retaining cord, IP68



QPD W 4PE2,5 6-11 M20 0,5 GY - Panel feed-through



1403726

<https://www.phoenixcontact.com/us/products/1403726>

SEALING PLUG 10X16 RD - Closing cap

1400284

<https://www.phoenixcontact.com/us/products/1400284>

Closing cap, for threads pluggable, color: red

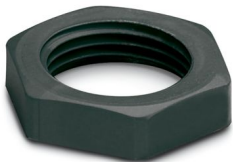


Q-MU-M20 BK - Flat nut

1586099

<https://www.phoenixcontact.com/us/products/1586099>

Flat nut, color: black



QPD W 4PE2,5 6-11 M20 0,5 GY - Panel feed-through



1403726

<https://www.phoenixcontact.com/us/products/1403726>

QSS 27 - Socket wrench

1670646

<https://www.phoenixcontact.com/us/products/1670646>



Allen wrench, for loosening and fastening the QUICKON union nut, WAF 27 mm

Phoenix Contact 2024 © - all rights reserved

<https://www.phoenixcontact.com>

Phoenix Contact USA
586 Fulling Mill Road
Middletown, PA 17057, United States
(+717) 944-1300
info@phoenixcon.com