

165075 ✓ ACTIVE

PLASTI-GRIP

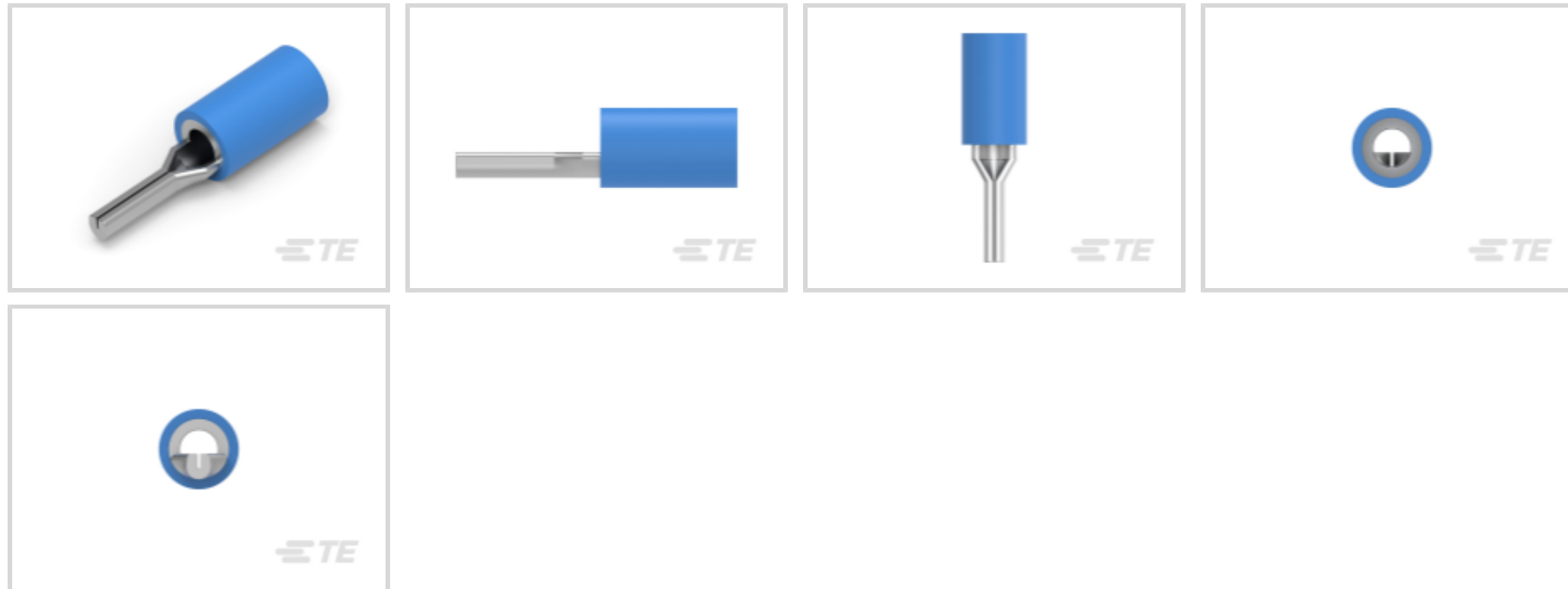
TE Internal #: 165075

Wire Pin, Mating Pin Diameter 1.78 mm [.07 in], 16 – 14 AWG Wire Size, 1 – 2.5 mm² Wire Size, PLASTI-GRIP, Crimp Wire Pins, Tabs & Ferrules

[View on TE.com >](#)



Terminals & Splices > Crimp Wire Pins, Tabs & Ferrules



Crimp Wire Terminal Type: **Wire Pin**

Mating Pin Diameter: **1.78 mm [.07 in]**

Compatible Insulation Diameter Range: **2.92 – 4.83 mm, 4.95 mm [.115 – .19 in, .195 in]**

Wire Size: **1 – 2.5 mm²**

Features

Product Type Features

Sealable	No
Compatible With Discrete Wire Type	Stranded
Wire Insulation Support Retention Type	Insulation Support

Configuration Features

Compatible With Wire & Cable Type	Discrete Wire
-----------------------------------	---------------

Body Features

Sleeve Material	PVC
Insulation Material	PVC
Primary Product Color	Blue

Contact Features

Contact Mating Area Length	6.7 mm[.26 in]
Contact Fabrication	Stamped & Formed
Crimp Wire Terminal Type	Wire Pin
Mating Pin Diameter	1.78 mm[.07 in]



Barrel Type	Closed
Terminal Plating Material	Tin
Contact Shape & Form	Round
Terminal Orientation	Straight

Mechanical Attachment

Wire Insulation Support	Without
-------------------------	---------

Dimensions

DIN Wire Size	1 – 2.5 mm ²
Compatible Insulation Diameter Range	2.92 – 4.83 mm, 4.95 mm [.115 – .19 in][.195 in]
Wire Size	2050 – 5180 CMA
Terminal Material Thickness	.79 mm [.031 in]
Overall Product Length	20.65 mm [.813 in]

Usage Conditions

Insulation Option	Partially Insulated
Operating Temperature Range	105 °C [221 °F]

Packaging Features

Packaging Quantity	1000
Packaging Method	Box

Product Compliance

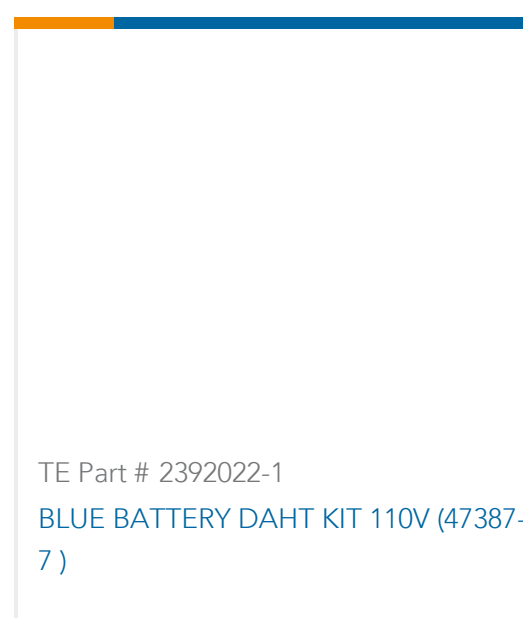
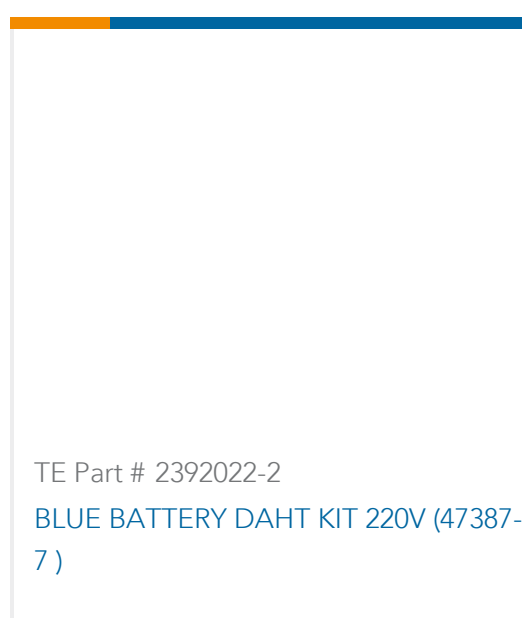
[For compliance documentation, visit the product page on TE.com>](#)

EU RoHS Directive 2011/65/EU	Compliant
EU ELV Directive 2000/53/EC	Compliant
China RoHS 2 Directive MIIT Order No 32, 2016	No Restricted Materials Above Threshold
EU REACH Regulation (EC) No. 1907/2006	Current ECHA Candidate List: JUNE 2024 (241) Candidate List Declared Against: JUNE 2024 (241) Does not contain REACH SVHC
Halogen Content	Not Low Halogen - contains Br or Cl > 900 ppm.
Solder Process Capability	Not applicable for solder process capability

Product Compliance Disclaimer

This information is provided based on reasonable inquiry of our suppliers and represents our current actual knowledge based on the information they provided. This information is subject to change. The part numbers that TE has identified as EU RoHS compliant have a maximum concentration of 0.1% by weight in homogenous materials for lead, hexavalent chromium, mercury, PBB, PBDE, DBP, BBP, DEHP, DIBP, and 0.01% for cadmium, or qualify for an exemption to these limits as defined in the Annexes of Directive 2011/65/EU (RoHS2). Finished electrical and electronic equipment products will be CE marked as required by Directive 2011/65/EU. Components may not be CE marked. Additionally, the part numbers that TE has identified as EU ELV compliant have a maximum concentration of 0.1% by weight in homogenous materials for lead, hexavalent chromium, and mercury, and 0.01% for cadmium, or qualify for an exemption to these limits as defined in the Annexes of Directive 2000/53/EC (ELV). Regarding the REACH Regulation, the information TE provides on SVHC in articles for this part number is based on the latest European Chemicals Agency (ECHA) 'Guidance on requirements for substances in articles' posted at this URL: <https://echa.europa.eu/guidance-documents/guidance-on-reach>

Compatible Parts



Also in the Series | **PLASTI-GRIP**



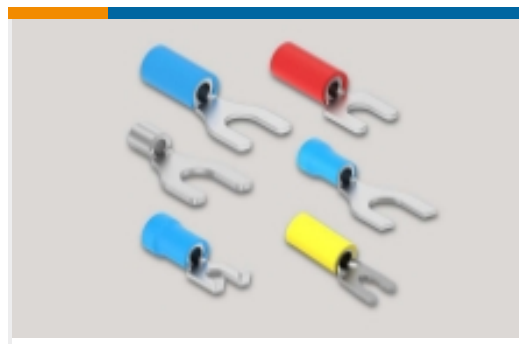
Compression Connectors(3)



Crimp Wire Pins, Tabs & Ferrules(19)



Ring Terminals(300)



Spade Terminals(160)



Splices(46)

Customers Also Bought



TE Part #2-1318114-3
DYNAMIC D2100 TAB HSG 6P P/M Y



TE Part #179955-6
DYNAMIC D-5 REC S AG FORM



TE Part #1623732-2
BCHE 7 W 10K 5%



TE Part #917249-1
DYNAMIC D-3400F REC HSG 20P



TE Part #108961-000
D-406-0003



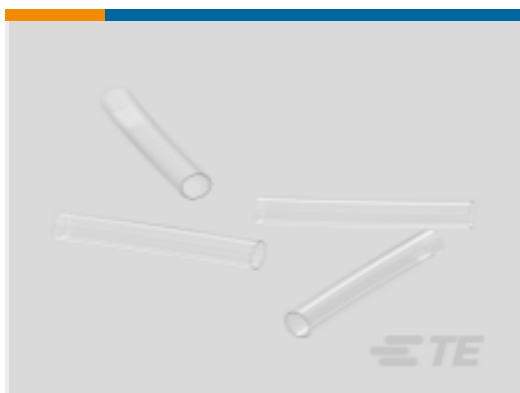
TE Part #1742422-1
187 FASTON,REC.,18-14 OR 2-18 AWG,TPBR



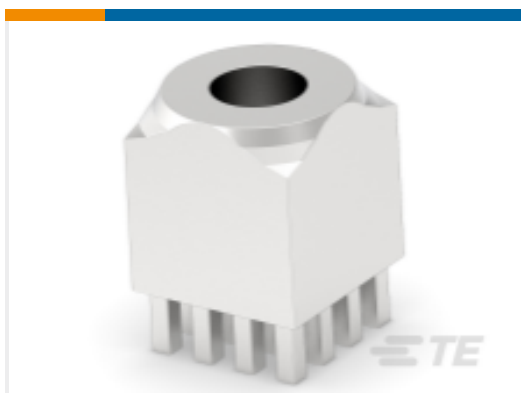
TE Part #1825255-5
MHS12304=SPDT SL SW VERT AG



TE Part #5390377-5
50 POS A/P PLUG 25 CL 30AU



TE Part #NB16054001
RT-375-3/32-X-SP



TE Part #225684-E
POWELM BUCHSE VOLLM M6 6,5 2,54 * EP 10,

Documents



Product Drawings

P.G. WIRE PIN 16-14

English

CAD Files

3D PDF

3D

Customer View Model

[ENG_CVM_CVM_165075_Z.2d_dxf.zip](#)

English

Customer View Model

[ENG_CVM_CVM_165075_Z.3d_igs.zip](#)

English

Customer View Model

[ENG_CVM_CVM_165075_Z.3d_stp.zip](#)

English

3D PDF

English

Customer View Model

[ENG_CVM_165075_K.3d_igs.zip](#)

English

Customer View Model

[ENG_CVM_165075_K.3d_stp.zip](#)

English

Customer View Model

[ENG_CVM_165075_K.2d_dxf.zip](#)

English

By downloading the CAD file I accept and agree to the [Terms and Conditions](#) of use.

Product Specifications

Application Specification

English

Instruction Sheets

Instruction Sheet (U.S.)

English

Agency Approvals

UL Report

English