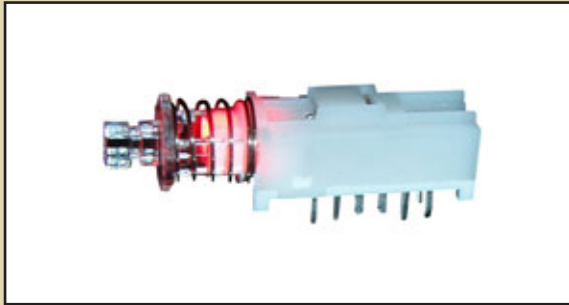


SERIES WBL SWITCHES



ILLUMINATED PUSHBUTTON SWITCH



FEATURES & BENEFITS

2 or 4 pole options
Cap Option
Multiple LED colors

APPLICATIONS / MARKETS

Telecommunications
Consumer electronics
Audio/Visual
Medical equipment
Computer/servers/peripherals

MECHANICAL SPECIFICATIONS

| | |
|------------------|---|
| Mechanical Life: | 10,000 cycles |
| Force: | 200 +/- 100 grams |
| Travel: | Full: 3.30 +/- 0.3mm; To Lock: 2.50 +/- 0.3mm |

ELECTRICAL SPECIFICATIONS

| | |
|------------------------|----------------------|
| Contact Arrangement: | DPDT & 4PDT |
| Contact Rating: | 30VDC, 300mA |
| Contact Resistance: | 50mΩ (initial max) |
| Insulation Resistance: | 100MΩ (Min @ 500VDC) |
| Dielectric Strength: | 500VAC |

ENVIRONMENTAL SPECIFICATIONS

| | |
|------------------------|----------------|
| Operating Temperature: | -20°C to +70°C |
| Storage Temperature: | -20°C to +70°C |

HOW TO ORDER:

SERIES

WBL

POLES



2U = 2 pole
4U = 4 pole

CONFIGURATION



OA = Momentary
EE = Latching

LED COLOR



R = Red
G = Green
Y = Yellow
X = None
B = Blue
RG = Red-Green
RB = Red-Blue
RY = Red-Yellow
GB = Green-Blue
GY = Green-Yellow
YB = Yellow-Blue

PLATING



Q = Silver

BUTTON
(optional)



R05 = 10mm Dia.

BUTTON COLOR
(optional)

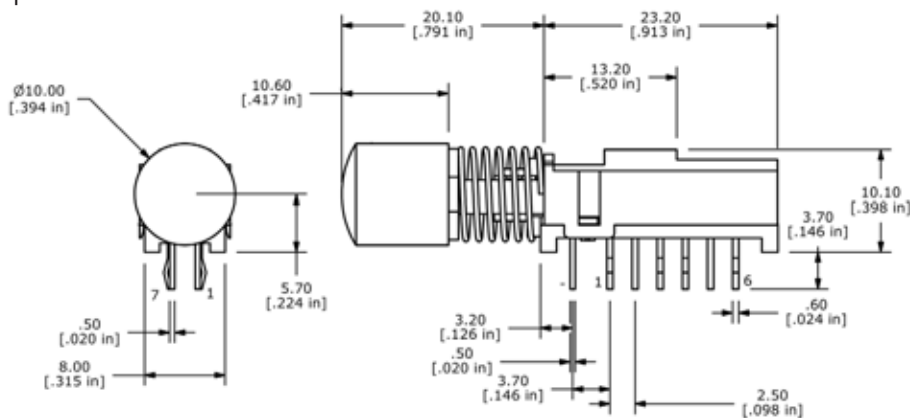


CLR = Transparent

Parts to be packaged in trays, 84 pieces per tray.

Specifications subject to change without notice.

Optional Button:



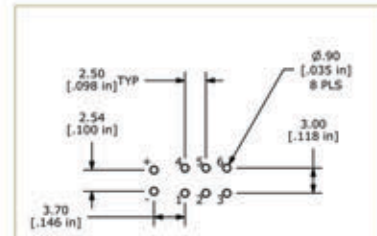
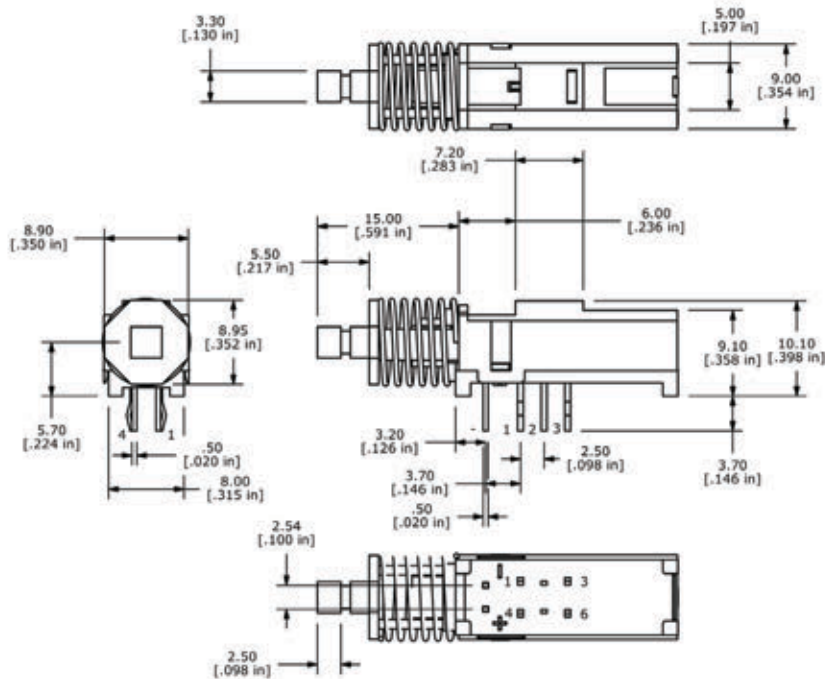
LED SPECIFICATIONS

| | Units | Blue | Red | Green | Yellow |
|---------------------------|-------|-------------------|-------------------|-------------------|-------------------|
| Forward Current | mA | 20mA | 20mA | 20mA | 20mA |
| Forward Voltage @ 20mA | VDC | 3.5 typ - 4.0 max | 1.7 typ - 2.6 max | 1.7 typ - 2.6 max | 1.7 typ - 2.6 max |
| Luminous Intensity @ 20mA | mcd | 350 typ | 1.6 typ | 4.7 typ | 4.7 typ |

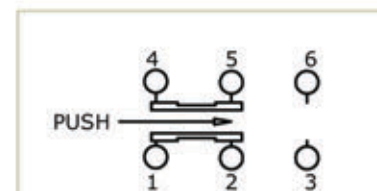
SERIES WBL SWITCHES



2 Pole Option:

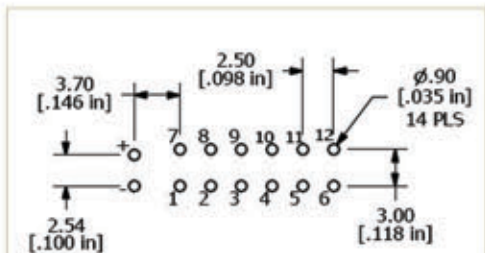
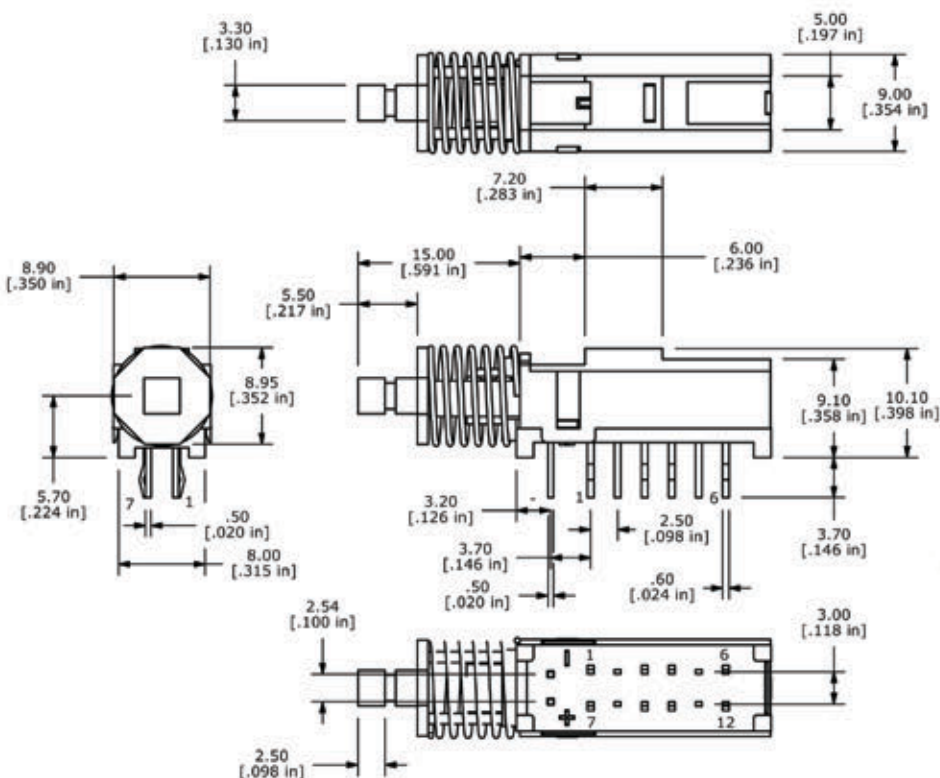


P.C. MOUNTING

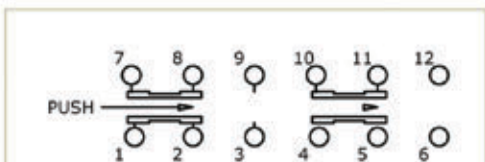


SCHEMATIC

4 Pole Option:



P.C. MOUNTING



SCHEMATIC

Mouser Electronics

Authorized Distributor

Click to View Pricing, Inventory, Delivery & Lifecycle Information:

E-Switch:

[WBL2UOAYBQR05CLR](#) [WBL4UEEGBQR05CLR](#) [WBL2UEERBQR05CLR](#) [WBL2UEEGQ](#) [WBL4UEEGBQ](#)
[WBL2UEERBQ](#) [WBL4UEERBQ](#) [WBL2UEEGQR05SILPWR](#) [WBL2UOAGQ](#) [WBL2UOAGQR05CLR](#)