

# UM-PRO 122 COVER-L KMGY - Lateral element



2201228

<https://www.phoenixcontact.com/us/products/2201228>

Please be informed that the data shown in this PDF document is generated from our online catalog. Please find the complete data in the user documentation. Our general terms of use for downloads are valid.

Lateral element (left) with mounting foot for DIN rails for UM-PRO profiles with a PCB width of 122 mm



## Your advantages

- Tailor-made housing length, can be cut to length with millimeter precision
- Easy integration of large electronics components, thanks to the open design
- Heat-resistant UM-PRO made from polyamide with UL approval up to 100°C
- Easy device mounting thanks to snap-mount principle (the sides are fixed without the aid of tools)
- High degree of flexibility, thanks to freely positionable covering hoods

## Commercial data

Item number	2201228
Packing unit	10 pc
Minimum order quantity	10 pc
Note	Made to order (non-returnable)
Sales key	AC04
Product key	ACHDAC
GTIN	4046356746663
Weight per piece (including packing)	19.5 g
Weight per piece (excluding packing)	19.3 g
Customs tariff number	39269097
Country of origin	PL

# UM-PRO 122 COVER-L KMGY - Lateral element



2201228

<https://www.phoenixcontact.com/us/products/2201228>

## Technical data

### Notes

Assembly note	Refer to the data sheet for the range in the download area.
---------------	---

### Product properties

Product type	Panel mounting base side part
Housing type	Press-drawn section housings
Housing series	UM-PRO
Product family	UM-PRO 122
Type	Lateral element (left)

### Dimensions

Width	19.5 mm
Height	142.3 mm
Depth	39.45 mm
Depth from top edge of DIN rail	32.45 mm

### PCB design

PCB thickness	1.4 mm ... 1.8 mm
---------------	-------------------

### Material specifications

Color (Housing)	light grey (RAL 7035)
Flammability rating according to UL 94	V0
Housing material	Polyamide

### Environmental and real-life conditions

#### Glow-wire test

Specification	IEC 60695-2-11:2014-02
Temperature	850 °C
Time of exposure	30 s

#### Thermal stability / ball thrust test

Specification	IEC 60695-10-2:2014-02
Temperature	125 °C
Test duration	1 h
Force	20 N

#### Mechanical strength / tumbling barrel

Specification	IEC 60068-2-31:2008-05
Height of fall	50 cm
Frequency	50

#### Degree of protection (IP code)

Specification	IEC 60529:1989-11 + AMD 1:1999-11 + AMD 2:2013-08
---------------	---

# UM-PRO 122 COVER-L KMGY - Lateral element



2201228

<https://www.phoenixcontact.com/us/products/2201228>

## Ambient conditions

Max. IP code to attain	IP20
Ambient temperature (operation)	-40 °C ... 105 °C (depending on power dissipation)
Ambient temperature (storage/transport)	-40 °C ... 55 °C
Ambient temperature (assembly)	-5 °C ... 100 °C
Relative humidity (storage/transport)	80 %

## PCB data

Number of PCB holders	3
Type of PCB mount	Insertion/securing with additional elements
PCB surface	700 mm² ... 1200 mm² (per basic profile cm)
Thickness of the PCB	1.4 mm ... 1.8 mm

## Mounting

Mounting type	DIN rail mounting/wall mounting (with optional mounting flange)
---------------	---

## Packaging specifications

Type of packaging	packed in cardboard
Outer packaging type	Carton

# UM-PRO 122 COVER-L KMGY - Lateral element



2201228

<https://www.phoenixcontact.com/us/products/2201228>

## Approvals

🔗 To download certificates, visit the product detail page: <https://www.phoenixcontact.com/us/products/2201228>



**UL Recognized**

Approval ID: FILE E 240868

# UM-PRO 122 COVER-L KMGY - Lateral element



2201228

<https://www.phoenixcontact.com/us/products/2201228>

## Classifications

### ECLASS

ECLASS-11.0	27182701
ECLASS-13.0	27190602

### ETIM

ETIM 9.0	EC002779
----------	----------

### UNSPSC

UNSPSC 21.0	31261500
-------------	----------

# UM-PRO 122 COVER-L KMGY - Lateral element



2201228

<https://www.phoenixcontact.com/us/products/2201228>

## Environmental product compliance

EU RoHS	
Fulfills EU RoHS substance requirements	Yes, No exemptions
China RoHS	
Environment friendly use period (EFUP)	EFUP-E
	No hazardous substances above the limits
EU REACH SVHC	
REACH candidate substance (CAS No.)	No substance above 0.1 wt%

# UM-PRO 122 COVER-L KMGY - Lateral element



2201228

<https://www.phoenixcontact.com/us/products/2201228>

## Mandatory accessories

### UM-PRO PROFILE - Profile

2200148

<https://www.phoenixcontact.com/us/products/2200148>

Press-drawn section housings, Latching with side elements, latching with foot element, Basic profile, profile length (configurable): 3 cm ... 200 cm, depth: 19.8 mm, Note: required profile length = PCB length - 16.2 mm



---

### UM-PRO 122 COVER-R KMGY - Lateral element

2201229

<https://www.phoenixcontact.com/us/products/2201229>

Lateral element (right) with mounting foot for DIN rails for UM-PRO profiles for PCB the width of 108 mm



---

## Accessories

## UM-PRO 122 COVER-L KMGY - Lateral element

2201228

<https://www.phoenixcontact.com/us/products/2201228>



### SZF 0-0,4X2,5 - Screwdriver

1204504

<https://www.phoenixcontact.com/us/products/1204504>



Actuation tool, for ST terminal blocks, also suitable for use as a bladed screwdriver, size: 0.4 x 2.5 x 75 mm, 2-component grip, with non-slip grip

---

### UM-PRO PE CONTACT L1 - Functional ground contact

2200161

<https://www.phoenixcontact.com/us/products/2200161>



PE contact for UM-PRO panel mounting base for connecting the PCB to the DIN rail at level 1



# UM-PRO 122 COVER-L KMGY - Lateral element



2201228

<https://www.phoenixcontact.com/us/products/2201228>

## UM-PRO PE CONTACT L2 - Functional ground contact

2200162

<https://www.phoenixcontact.com/us/products/2200162>



PE contact for UM-PRO panel mounting base for connecting the PCB to the DIN rail at level 2

---

## UM-PRO PE CONTACT L3 - Functional ground contact

2200163

<https://www.phoenixcontact.com/us/products/2200163>



PE contact for UM-PRO panel mounting base for connecting the PCB to the DIN rail at level 3

# UM-PRO 122 COVER-L KMGY - Lateral element



2201228

<https://www.phoenixcontact.com/us/products/2201228>

## UM-PRO PCB S-LOCK BK - Locking

2200168

<https://www.phoenixcontact.com/us/products/2200168>



Locking element for locking the top PCB onto UM-PRO housing close to the edge

---

## UM-PRO PCB C-LOCK L1 BK - Locking

2200164

<https://www.phoenixcontact.com/us/products/2200164>



Locking element for locking the PCB onto UM-PRO housing at level 1

# UM-PRO 122 COVER-L KMGY - Lateral element



2201228

<https://www.phoenixcontact.com/us/products/2201228>

## UM-PRO PCB C-LOCK L2 BK - Locking

2200165

<https://www.phoenixcontact.com/us/products/2200165>



Locking element for locking the PCB onto UM-PRO housing at level 2

---

## UM-PRO PCB C-LOCK L3 BK - Locking

2200166

<https://www.phoenixcontact.com/us/products/2200166>



Locking element for locking the PCB onto UM-PRO housing at level 3

# UM-PRO 122 COVER-L KMGY - Lateral element



2201228

<https://www.phoenixcontact.com/us/products/2201228>

## UM-BASIC/PRO PCB S-LOCK KMGY - Locking

2202031

<https://www.phoenixcontact.com/us/products/2202031>



Locking element for locking the upper PCB onto UM-BASIC/PRO housings close to the edge

---

## UM-BASIC/PRO PCB C-LOCK L1KMGY - Locking

2202028

<https://www.phoenixcontact.com/us/products/2202028>



Locking element for locking the PCB onto UM-BASIC/PRO housing at level 1

# UM-PRO 122 COVER-L KMGY - Lateral element



2201228

<https://www.phoenixcontact.com/us/products/2201228>

## UM-BASIC/PRO PCB C-LOCK L2KMGY - Locking

2202029

<https://www.phoenixcontact.com/us/products/2202029>



Locking element for locking the PCB onto UM-BASIC/PRO housing at level 2

---

## UM-BASIC/PRO PCB C-LOCK L3KMGY - Locking

2202030

<https://www.phoenixcontact.com/us/products/2202030>



Locking element for locking the PCB onto UM-BASIC/PRO housing at level 3

# UM-PRO 122 COVER-L KMGY - Lateral element

2201228

<https://www.phoenixcontact.com/us/products/2201228>



## UM-BASIC/PRO MOUNT KMGY - Mounting flange

2202032

<https://www.phoenixcontact.com/us/products/2202032>

Press-drawn section housings, Wall mounting, Mounting flange for direct wall mounting



---

## UM-PRO MOUNT BK - Mounting flange

2200171

<https://www.phoenixcontact.com/us/products/2200171>

Foot element for mounting UM-PRO DIN rail-mount bases directly onto the mounting panel



# UM-PRO 122 COVER-L KMGY - Lateral element

2201228

<https://www.phoenixcontact.com/us/products/2201228>



## UM-BASIC/PRO 122 FOOT KMGY - Foot element

2202024

<https://www.phoenixcontact.com/us/products/2202024>

Press-drawn section housings, DIN rail mounting, for the DIN rail, for mounting below UM-BASIC PROFILE (width: 122 mm), Foot element



---

## UM-PRO 122 FOOT BK - Foot element

2200160

<https://www.phoenixcontact.com/us/products/2200160>

Press-drawn section housings, DIN rail mounting, Base element for the DIN rail, for mounting below UM-PRO PROFILE (width: 122 mm), Foot element, width: 14.3 mm, height: 135.9 mm, depth: 20.95 mm



## UM-PRO 122 COVER-L KMGY - Lateral element

2201228

<https://www.phoenixcontact.com/us/products/2201228>



## UM-PRO A/U N 73 CM - Covering hood

2200310

<https://www.phoenixcontact.com/us/products/2200310>



Press-drawn section housings, Latching, Cover, width: 73 mm, profile length (configurable): 3 cm ... 100 cm, height: 24 mm, Note: max. length of the cover = PCB length - 19 mm

---

## UM-PRO A/U 73 CM - Covering hood

2200311

<https://www.phoenixcontact.com/us/products/2200311>



Press-drawn section housings, Latching, Cover, width: 73 mm, profile length (configurable): 3 cm ... 100 cm, height: 63.2 mm, Note: max. length of the cover = PCB length - 19 mm



## UM-PRO 122 COVER-L KMGY - Lateral element

2201228

<https://www.phoenixcontact.com/us/products/2201228>



## UM-PRO A/U 92 CM - Covering hood

2200312

<https://www.phoenixcontact.com/us/products/2200312>

Press-drawn section housings, Latching, Cover, width: 92 mm, profile length (configurable): 3 cm ... 100 cm, height: 34 mm, Note: max. length of the cover = PCB length - 19 mm



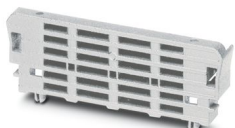
---

## UM-BASIC/PRO LID-73N KMGY - Lateral element

2202034

<https://www.phoenixcontact.com/us/products/2202034>

Press-drawn section housings, Latching, Side element for low U-shaped profile cover, width: 10.35 mm, height: 78.43 mm, depth: 29.75 mm



## UM-PRO 122 COVER-L KMGY - Lateral element

2201228

<https://www.phoenixcontact.com/us/products/2201228>



## UM-BASIC/PRO LID-73 KMGY - Lateral element

2202033

<https://www.phoenixcontact.com/us/products/2202033>



Press-drawn section housings, Latching, Side element for U-shaped profile cover, width: 10.35 mm, height: 78.49 mm, depth: 68.95 mm

---

## UM-BASIC/PRO LID-92 KMGY - Lateral element

2202047

<https://www.phoenixcontact.com/us/products/2202047>



Press-drawn section housings, Latching, Side element for U-shaped profile cover, width: 10.35 mm, height: 97.51 mm, depth: 39.7 mm

## UM-PRO 122 COVER-L KMGY - Lateral element

2201228

<https://www.phoenixcontact.com/us/products/2201228>



## UM-PRO LID-73N BK - Lateral element

2200174

<https://www.phoenixcontact.com/us/products/2200174>

Press-drawn section housings, Latching, Side element for low U-shaped profile cover, width: 10.35 mm, height: 78.43 mm, depth: 29.75 mm



---

## UM-PRO LID-73 BK - Lateral element

2200173

<https://www.phoenixcontact.com/us/products/2200173>

Press-drawn section housings, Latching, Side element for U-shaped profile cover, width: 10.35 mm, height: 78.49 mm, depth: 68.95 mm



# UM-PRO 122 COVER-L KMGY - Lateral element

2201228

<https://www.phoenixcontact.com/us/products/2201228>



## UM-PRO LID-92 BK - Lateral element

2200172

<https://www.phoenixcontact.com/us/products/2200172>

Press-drawn section housings, Latching, Side element for U-shaped profile cover, width: 10.35 mm, height: 97.51 mm, depth: 39.7 mm



---

Phoenix Contact 2024 © - all rights reserved

<https://www.phoenixcontact.com>

Phoenix Contact USA  
586 Fulling Mill Road  
Middletown, PA 17057, United States  
(+717) 944-1300  
[info@phoenixcon.com](mailto:info@phoenixcon.com)