



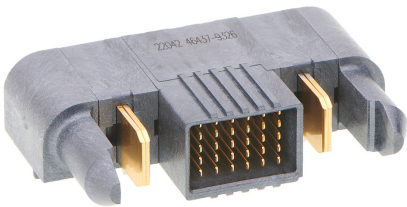
Part Number : [464379326](#)

Product Description : EXTreme Ten60Power Right-Angle Plug with Side Guides, 1 DC Power Circuit, 30 Signal Circuits, 1 DC Power Circuit, Press Fit Tail

Series Number : 46437

Status : Active

Product Category : Board-to-Board Connectors



Documents & Resources

Drawings

[Drawing 464379326_sd.pdf](#)

[Packaging Design Drawing 464371001-PK-000.pdf](#)

3D Models and Design Files

[3D Model 464379326_stp.zip](#)


Specifications

[Product Specification PS-46436-100-001.pdf](#)

[Test Summary 464361000-TS-000.pdf](#)

Product Environment Compliance

Compliance

GADSL/IMDS	Not Relevant
China RoHS	
EU ELV	Not Relevant
Low-Halogen Status	Low-Halogen per IEC 61249-2-21
REACH SVHC	Not Contained per D(2024)4144-DC (27 June 2024)
EU RoHS	Compliant per EU 2015/863

[Multiple Part Product Compliance Statements](#)

- Eu RoHS
- REACH SVHC
- Low-Halogen

[Multiple Part Industry Compliance Documents](#)

- IPC 1752A Class C
- IPC 1752A Class D
- Molex Product Compliance Declaration
- IEC-62474
- chemSHERPA (xml)

EU RoHS Certificate of Compliance

Part Details

General

Status	Active
Category	Board-to-Board Connectors
Series	46437
Description	EXTreme Ten60Power Right-Angle Plug with Side Guides, 1 DC Power Circuit, 30 Signal Circuits, 1 DC Power Circuit, Press Fit Tail
Application	Board-to-Board, Power, Signal
Comments	See Product Specification for details
Component Type	PCB Header
Keyword	Ten60
Product Family	EXTreme Ten60 High-Power Connectors
Product Name	EXTreme Ten60Power
UPC	195842667594

Agency

CSA	LR19980
UL	E29179

Electrical

Current - Maximum per Contact	60.0A
Voltage - Maximum	600V AC / 250V DC

Physical

Breakaway	No
Circuits (Loaded)	32

Circuits (maximum)	32
Color - Resin	Black
Durability (mating cycles max)	200
First Mate / Last Break	No
Flammability	94V-0
Glow-Wire Capable	No
Guide to Mating Part	Side, Yes
Keying to Mating Part	None
Lock to Mating Part	No
Mated Height	10.00mm
Material - Metal	High Conductivity Copper
Material - Plating Mating	Gold
Material - Plating Termination	Tin
Material - Resin	Liquid Crystal Polymer
Net Weight	11.685/g
Number of Rows	1, 5
Orientation	Right Angle
Packaging Type	Tray
PC Tail Length	2.50mm, 3.28mm
PCB Locator	Yes
PCB Retention	Yes
PCB Thickness - Recommended	1.58mm
Pitch - Mating Interface	2.00mm, 5.50mm
Plating min - Mating	0.762µm
Plating min - Termination	2.540µm
Polarized to Mating Part	Yes
Polarized to PCB	Yes
(p)ower-(s)ignal Configuration	1p - 30s - 1p
Stackable	No
Temperature Range - Operating	-40° to +105°C
Termination Interface Style	Through Hole - Compliant Pin

Mates With / Use With

Mates with Part(s)

Description	Part Number
EXTreme Ten60Power Right-Angle Receptacle with Side Guides, 1 DC Power Circuit, 30 Signal Circuits, 1 DC Power Circuit, Press Fit Tail	<u>464369326</u>
EXTreme Ten60Power Vertical Receptacle with Side Guides, 1 DC Power Circuit, 30 Signal Circuits, 1 DC Power Circuit, Press Fit Tail	<u>465629326</u>

This document was generated on Sep 23, 2024