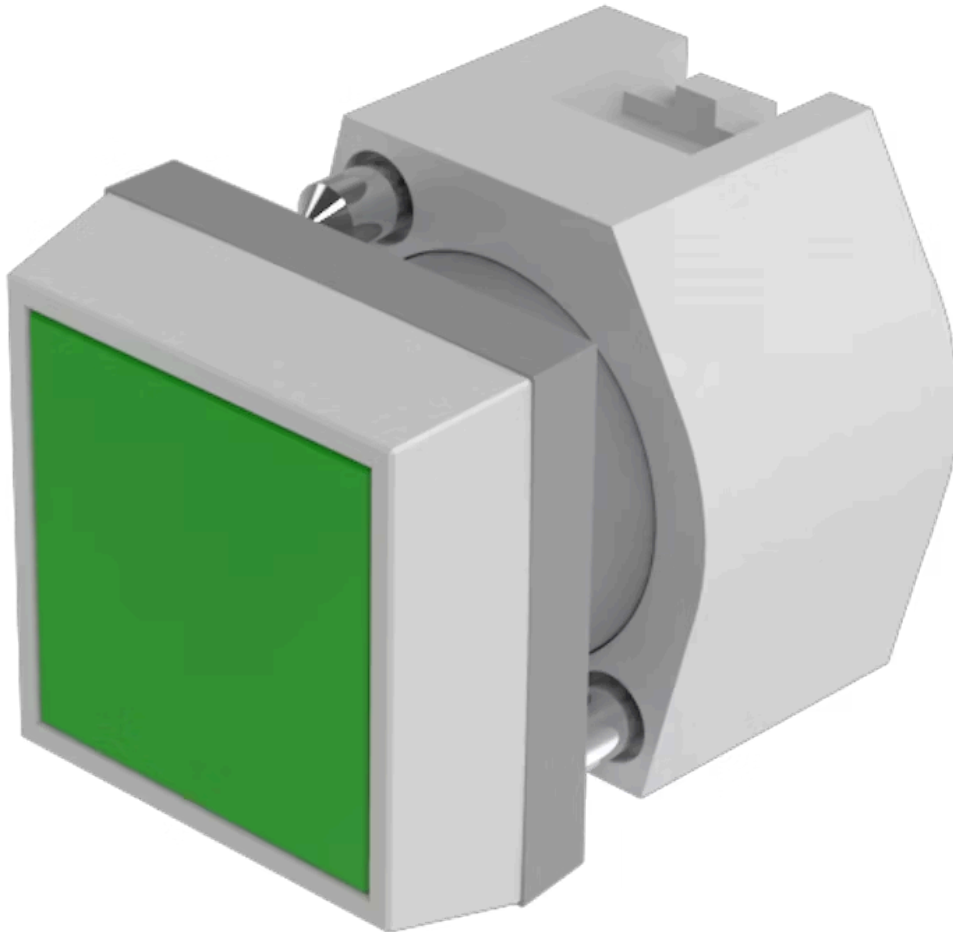
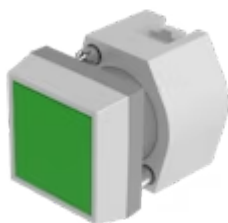


Actuator

704.210.5

Distribution by
DigiKey**DigiKey**<https://digikey.eao.com/p/704.210.5>

Your product:



704.210.5 Actuator

FRONT

Front bezel material:	Plastic
Front form:	square
Front dimension:	30 mm x 30 mm
Front bezel colour:	Grey

MOUNTING

Design:	raised
---------	--------

OPERATING-/INDICATION PART

Lens material:	Plastic
Lens shape:	flush
Lens illumination:	non illuminative
Lens colour:	Green
Lens optics:	transparent

ELECTRICAL CHARACTERISTICS

Standards:	The switches comply with the "Standards for low-voltage switching devices" DIN EN 60947-1
------------	---

MECHANICAL CHARACTERISTIC

Weight:	0.04 kg
Operating force:	6.2 N
Switching action:	Momentary

Operating Travel: ca. 5.8 mm \pm 0.2 mm

Mechanical lifetime: \leq 3 Mio. cycles of operation

AMBIENT CONDITION

Storage temperature: - 40 °C ... + 85 °C

Operating temperature: - 40 °C ... + 55 °C

IP Protection: IP65 front side

OTHER

Hints: Frontring with protective cover to be mounted with a torque of 0.4 Nm onto actuator, Max. 3 switching elements can be clipped on

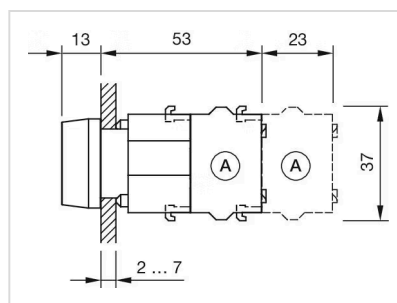
max. number of switching elements: 3

Housing colour: Black

Short Description: Actuator, 30 mm x 30 mm, flush, non illuminative, Green, Plastic, transparent, square, Grey, Plastic, Momentary

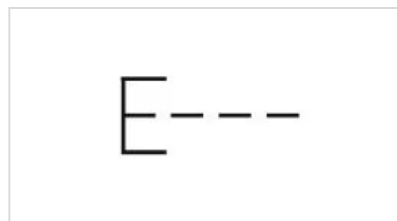
Housing material: Plastic

Dimension drawings:

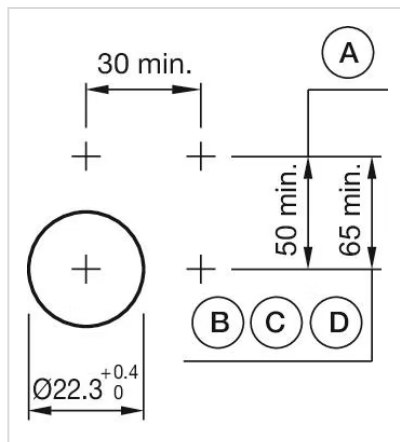


A = Screw terminal

Wiring diagrams:



Mounting cut-outs:



- A = Screw terminal
- B = Push-in terminal (PIT)
- C = Plug-in terminal 6.3 mm x 0.8 mm
- D = Double plug-in terminal 6.3 mm x 0.8 mm